



**INSTALLATION INSTRUCTIONS
S-SERIES™ OUTER ROLLSTOP
REPLACEMENT KIT # 01221/01222/01223**

- Read and understand supplemental instructions completely before installation is attempted. Refer to the Service/Owner Manual for additional installation instructions and safety precautions.
- Check contents of kit. Immediately notify Ricon of any missing parts. Claims for damages that have occurred during shipment must be made to the shipper.

TABLE OF CONTENTS	PAGE
I. TOOLS REQUIRED	1
II. INTRODUCTION	1
III. DISASSEMBLY PROCEDURE	1
IV. ASSEMBLY PROCEDURE	2

I. TOOLS REQUIRED

- | | | |
|------------------------------------|---------------------------|-------------|
| 5/16 Socket head
Loc-Tite® Blue | Hex key set
Red grease | 7/16 Wrench |
|------------------------------------|---------------------------|-------------|

II. INTRODUCTION

The following instructions outline the installation of an outer Rollstop Retrofit kit on any S-Series™ lift.

NOTE: Refer to **Figure [1]** and its parts list (pages 3 and 4).

III. DISASSEMBLY PROCEDURE

- A. REFER TO FIGURE [1]. REMOVE ITEM #1 BY REMOVING ITEMS: #12, # 21 AND # 25.**
- B. REMOVE ITEMS #4 AND #5 BY:**
 1. Removing 4 set screws item #26.
 2. Remove two springs (items #6A and#6B).
 3. Remove item #13 from the platform.

IV. ASSEMBLY PROCEDURE

A. IF ITEM #24 IS 31", 33" OR 40.5" INCHES WIDE:

1. Install items #4 and #5 per following:
 - a. Insert item #13 into the platform.
 - b. Insert 2 Ea. of item #23 onto items #4 and #5 and insert both through item #13 into the platform.
 - c. Place item #8 in between both pieces (#4 and #5) and by using the four cup setscrews install them. Use Loc-Tite® Blue for setscrews.
2. Connect item #1 to items #4 and #5 per following:
 - a. Insert items #12 and #29 and attach them to item #20 through items #4 and #5.
 - b. Insert items #21 (new supplied item) and by using the cone setscrews (items #25). Tighten the assembly. There will be a gap between the end of the pin and the rollstop, this is normal. Use Loc-Tite® Blue for setscrews.

NOTE: Be sure items #4 and #5 are inserted completely.

NOTE: Spacers (item #11) is not used.

B. IF ITEM #24 IS 30.5", 32.5" OR 40" INCHES WIDE:

1. Install items #4 and #5 per following:
 - a. Insert item #13 into the platform.
 - b. Install 3 Ea. of item #23 onto items #4 and #5 and insert both through item #13 into the platform.
 - c. Place and install item #8 in between both pieces (4 and 5) using four cup setscrews. Use Loc-Tite® Blue for setscrews.
 - d. Install springs (items #6A & #6B) on both sides. (It is recommended to connect the springs to the frame first and then to the arms.)
2. Connect item #1 to items #4 & #5 per following:
 - a. Insert items #12 and #29 and attach them to item #20 through items #4 and #5.
 - b. Install items #21 and #11 (new supplied item) by inserting the cone setscrews (items #25). Tighten the assembly (use Loc-Tite® Blue for setscrews).

NOTE: Use red grease on all the necessary locations.

- c. Peel off and apply item #27 on top of item #1.

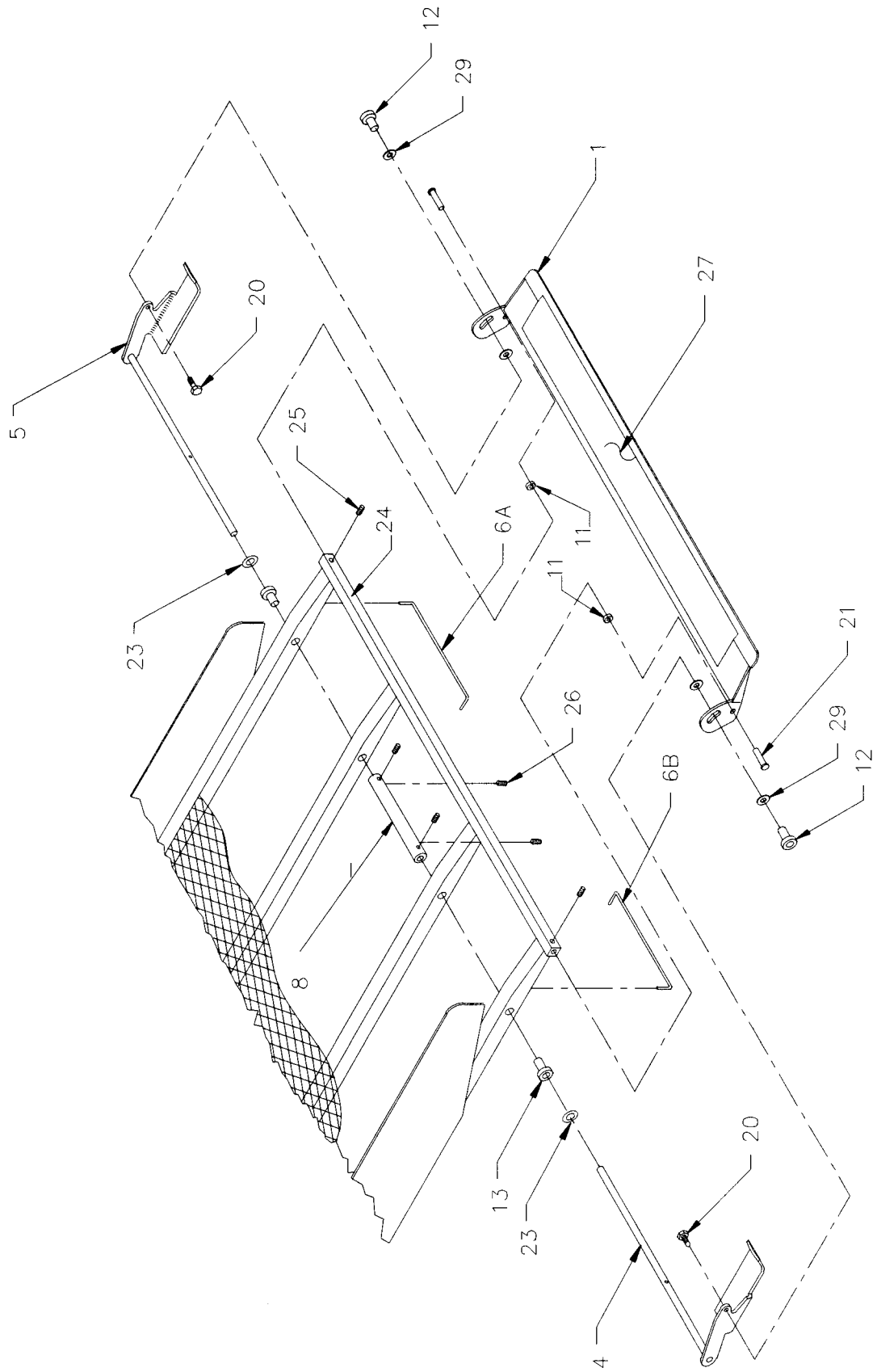


FIGURE [1]

FIGURE [1] PARTS LIST:

ITEM #	DESCRIPTION	QTY
1	Platform Roll Stop (different length)	1
4	Rollstop Actuator, Weld Assy. L.H. (different length)	1
5	Rollstop Actuator , Weld Assy. R.H. (different length)	1
6A	Spring, Torsion, R.H.	1
6B	Spring , Torsion, L.H.	1
8	Collar, Rollstop Actuator, Connector	1
11	Bushing , Steel	2
12	"T" Nut, Stainless	2
13	Bearing Rollstop Actuator Shoe	2
20	Cap Screw , Hex Head, 1/4-20X1/2"	2
21	Pin., Outer Barrier Clevis	2
23	Washer, 3/8" SAE	6
24	Platform Frame	1
25	Screw, Socket Set, Cone Point, 1/4-20X1/4	2
26	Screw, Socket Set, Cup Point , 1/4-20X1/4	4
27	Matting, Non Slip	4
29	Washer, Nylon, .318 ID X .751 OD X .031	4