



**INSTALLATION INSTRUCTIONS
RDO 2503/2505 SLIDE DOOR OPERATOR
VOLKSWAGEN EUROVAN KIT # 01138**

- Be certain that these supplemental instructions are read and understood completely before installation is attempted. You should also refer to the Service/Owner Manual for additional installation instructions and safety precautions.
- Check contents of this kit and notify Ricon immediately of any missing parts. Claims for damages that have occurred during shipping must be made to the shipper.

TABLE OF CONTENTS	PAGE
I. INTRODUCTION	1
II. TOOLS REQUIRED	1
III. VEHICLE PREPARATION	2
IV. DOOR OPERATOR MOUNTING	4
V. FORWARD DOOR BRACKET INSTALLATION	5
VI. CHAIN HOOK INSTALLATION	5
VII. CHAIN ASSEMBLY INSTALLATION	5
VIII. LIMIT SWITCH BRACKET	6
IX. COVER INSTALLATION	7

NOTE: KIT # 01226 IS NEEDED TO CONNECT THIS DOOR OPERATOR TO A MIRAGE 9004 LIFT.

I. INTRODUCTION

The following instructions outline the step by step installation of a RDO-2503 sliding door opener into a Volkswagen Eurovan.

II. TOOLS REQUIRED

#2 & #4 Phillips Screwdriver	3/4" Holesaw	1/4" & 1/8" Drill
1/2" & 7/16" Wrenches	Tape Measure	Hex Wrench set

III. VEHICLE PREPARATION

- A. REMOVE PLASTIC STEPWELL TRIM.
- B. REMOVE DOOR LATCH AT REAR DOOR POST **FIGURE [1]**.
- C. VERIFY SMOOTH OPERATION OF DOOR.
- D. DRILL THE FOLLOWING HOLES **FIGURES [2] & [3]**.
 1. Use **Figure [3]** dimensions for drilling U.S. version cars (left hand drive).
 2. Use **Figure [3A]** dimensions for drilling U.K. version cars (right hand drive cars).

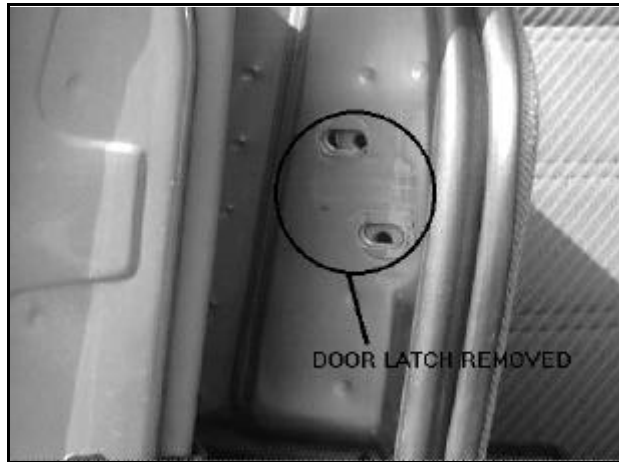


FIGURE [1]: DOOR LATCH REMOVED FROM DOOR POST

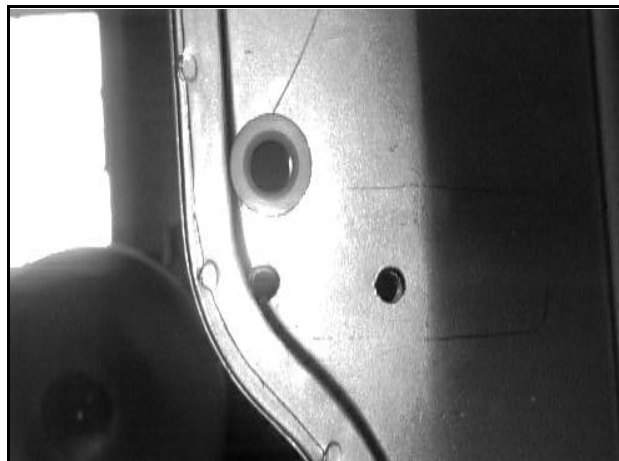


FIGURE [2]: DOOR POST HOLES LOCATIONS

NOTE: ALL DIMENSIONS IN INCHES

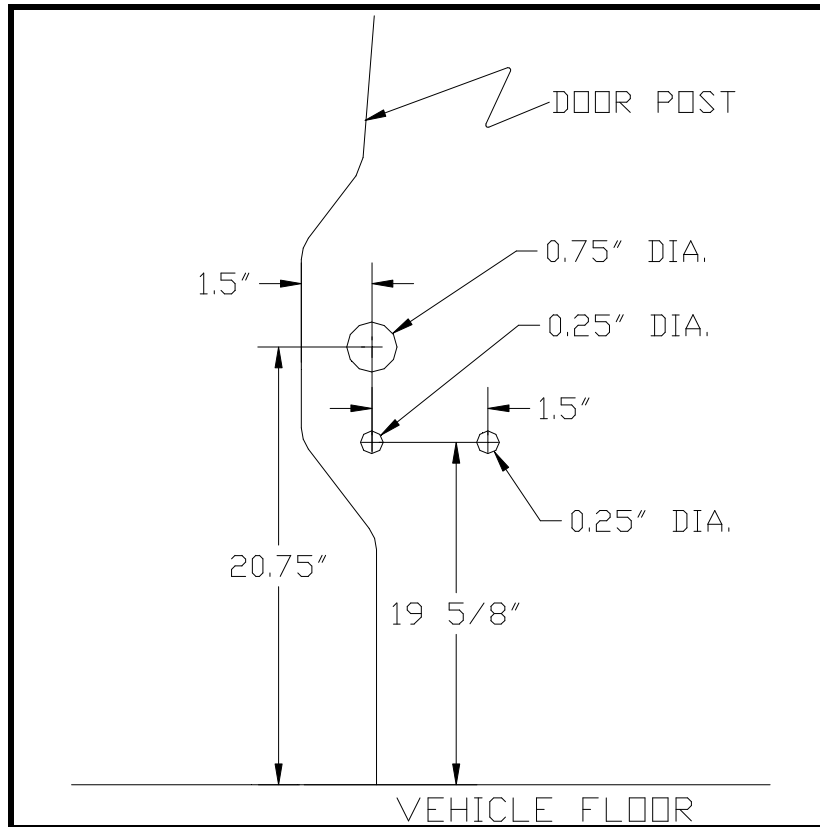


FIGURE [3]: DOOR POST DRILLING DIMENSION
(U.S. VERSION-RDO2503)

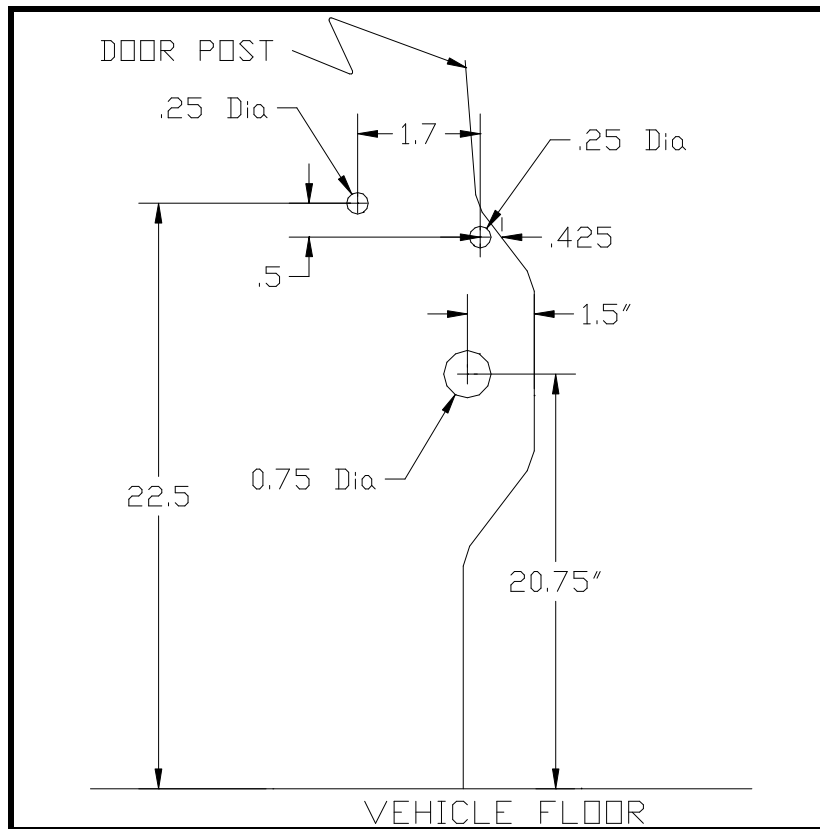


FIGURE [3A]: DOOR POST DRILLING DIMENSIONS
(U.K. VERSION-RDO2505)

IV. DOOR OPERATOR MOUNTING

- A. INSERT THE SUPPLIED DELRIN BUSHING INTO THE 3/4" HOLE **FIGURE [4]**.
- B. REMOVE BOTH RELAYS TO ACCESS HOLES.
- C. INSTALL CHAIN GUARD AND DOOR OPERATOR TO DOOR POST:
 1. Insert two 1/4-20x1-1/4" Buttonhead bolts with flatwashers through the doorpost from outside.
 2. Install the chain guard and door operator over the bolts and tighten with flatwashers and locknut on the inside **Figure [5]**.
 3. Verify that the door operator is level and reassemble the relays **Figure [6]**.

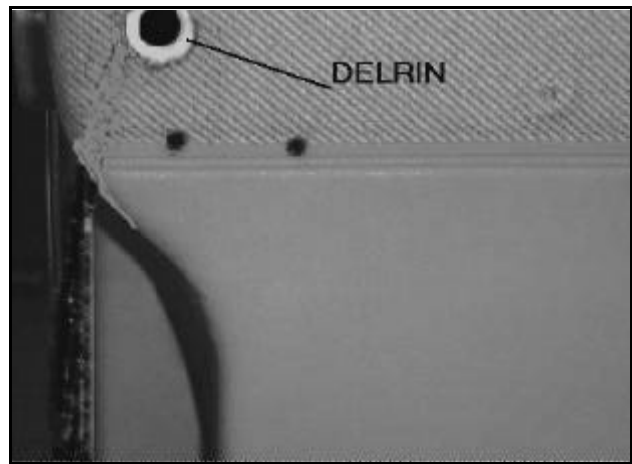


FIGURE [4]: DELRIN INSTALLED



FIGURE [5]: CHAIN GUARD AND D.O. INSTALLED



FIGURE [6]: D.O. LEVELED

V. FORWARD DOOR BRACKET INSTALLATION

- A. INSTALL THE FORWARD DOOR BRACKET TO THE DOOR USING #8 PHILLIPS SCREWS PER DIMENSIONS ON **FIGURE [7]**.
- B. VERIFY THAT THE ROLLER ON DOOR BRACKET ASSEMBLY IS IN LINE WITH THE EXIT ROLLER OF DOOR OPERATOR. IF NOT ALIGNED PROPERLY, THE CHAIN WILL MAKE EXCESSIVE NOISE.

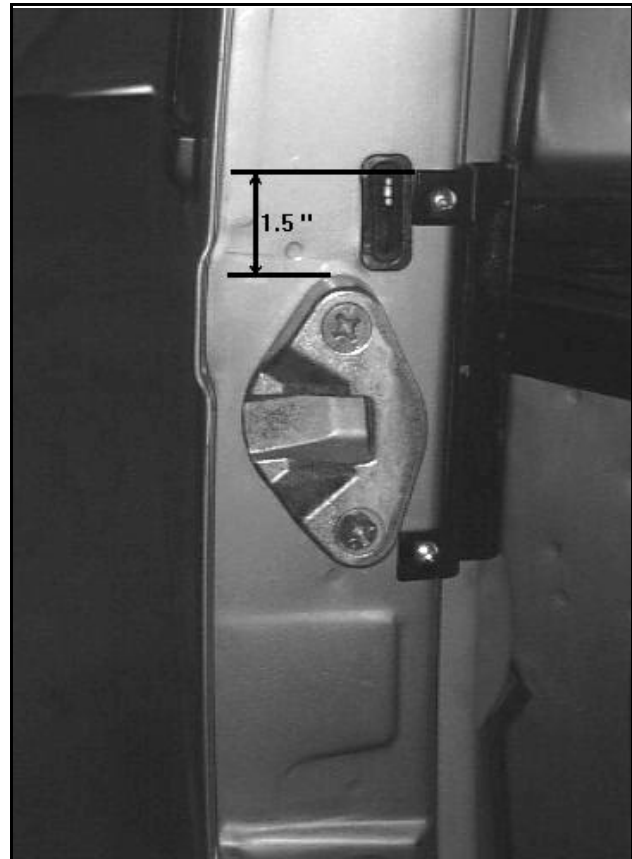


FIGURE [7]: FORWARD DOOR BRACKET INSTALLED

VI. CHAIN HOOK INSTALLATION

- A. INSERT THE SUPPLIED HOOK AROUND THE LOCKING MECHANISM OF SLIDING DOOR **FIGURE [8]**.
- B. ATTACH CHAIN TO THE HOOK AND INSERT THE BOLT.

VII. CHAIN ASSEMBLY

- A. ROUTE CHAIN INSIDE THE VEHICLE THROUGH THE DELRIN BUSHING.
- B. ROUTE CHAIN AROUND ROLLERS ON THE MOTOR PER **FIGURE [9]**.
- C. CLOSE DOOR COMPLETELY AND ROUTE CHAIN AROUND ROLLER ON THE FORWARD BRACKET **FIGURE [11]**.
- D. PULL CHAIN AND INSERT THE SUPPLIED WASHER ONTO THE CHAIN **FIGURE [10]**.
- E. MAKING SURE THE CHAIN IS NOT EXCESSIVELY LOOSE, ATTACH THE SPRING TO IT **FIGURE [11]**.
- F. CONNECT SPRING TO THE HOOK ON THE BRACKET **FIGURE [11]**.



FIGURE [8]: REAR HOOK INSTALLED

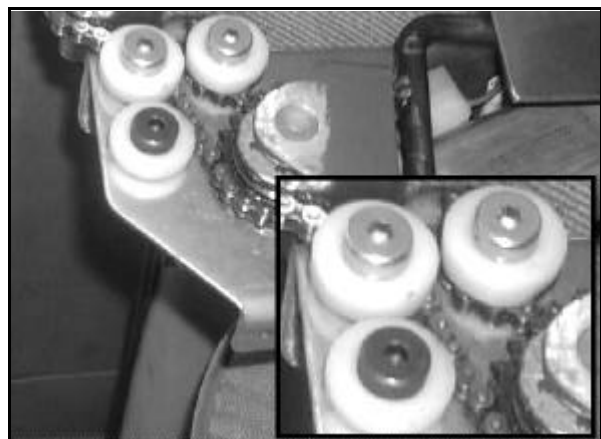
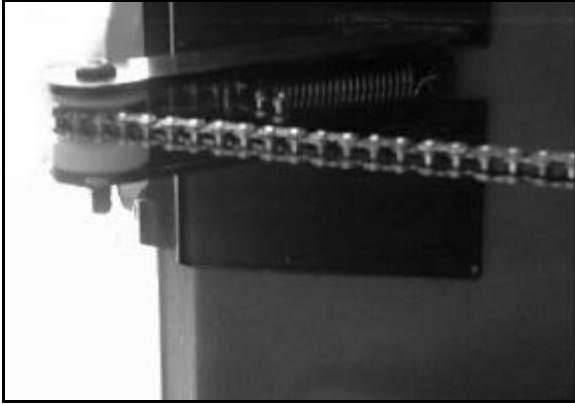
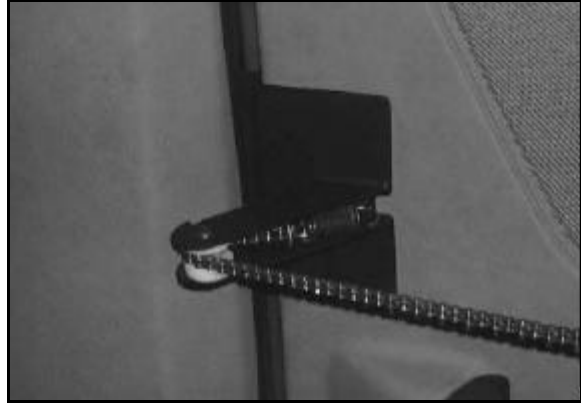


FIGURE [9]: CHIAN ROUTING ON THE D.O.



**FIGURE [10]: SPRING AND WASHER
CONNECTED TO CHAIN**



**FIGURE [11]: CHAIN CONNECTED TO
FORWARD DOOR BRACKET**

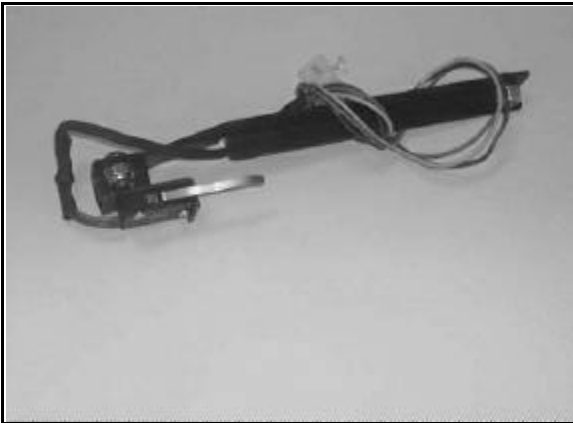


FIGURE [12]: LIMIT SWITCH BRACKET



**FIGURE [13]: D.O. COVER WITH RELEASE
PIN INSTALLED**

VIII. LIMIT SWITCH BRACKET

- A. REMOVE THE DOOR STOP BRACKET AT THE LOWER DOOR TRACK.
 - 1. Open door halfway.
 - 2. Remove the two socket head screws.
 - 3. Remove the door stop bracket.
- B. INSTALL THE SUPPLIED SWITCH ONTO THE BRACKET USING THE TWO 4-40 SCREWS PROVIDED.
- C. INSTALL THE SWITCH RETAINER BRACKET **FIGURE [12]**.
 - 1. Install the switch retainer bracket assembly in place of door bracket.
 - 2. Secure retainer bracket with two socket head screws and lock nuts.
- D. RUN WIRING HARNESS UP TO THE DOOR OPERATOR.
 - 1. Route harness behind the panel.
 - 2. Plug the three-pin Molex connector to the three-pin Molex connector on the door opener harness.

IX. COVER INSTALLATION

- A. INSERT RELEASE PIN FROM INSIDE TO OUTSIDE AND INSERT CLIP TO HOLD IT **FIGURE [13]**.
- B. PLACE COVER OVER DOOR OPERATOR AND SECURE USING SUPPLIED SCREWS **FIGURE [13]**.

NOTES

RICON CORPORATION

TOP LEVEL PACKING LIST FOR #01138

LEVEL	PART #	QTY.	DESCRIPTION
0	01138	1.000	KIT, SLIDING D/O, 93+VW, RDO2503
-1	R25-0011	1.000	ASSEMBLY, WELD-DOOR OPENER 93VW
-1	R25-0016	1.000	GUARD, CHAIN 93VW
-1	32ii125e	1.000	INSTL., INSTR., SLIDING D/O, VW RDO2503
-1	R25-0010	1.000	BRACKET, SWITCH RERAINER 93VW
-1	01218	1.000	KIT, INSTL., HDWR, 93+VW, RDO2503

THE LATEST ADDITION OF THIS BOM REPORTS IS ON 10/04/94.