



**INSTALLATION INSTRUCTIONS  
F9004 PANEL INSTALLATION  
EXTENDED LENGTH KIT # 01087**

- Be certain that these supplemental instructions are read and understood completely before installation is attempted. You should also refer to the Service/Owner Manual for additional installation instructions and safety precautions.
- Check contents of this kit and notify Ricon immediately of any missing parts. Claims for damages that have occurred during shipping must be made to the shipper.

<b>TABLE OF CONTENTS</b>	<b>PAGE</b>
I. INTRODUCTION .....	1
II. TOOLS REQUIRED .....	1
III. PANEL INSTALLATION .....	2

**I. INTRODUCTION**

The following information provides instructions to attach panels to the bottom sides of an extended length VW van.

**II. TOOLS REQUIRED**

Weatherstripping cutter

Hex wrench set

### III. PANEL INSTALLATION

#### A. CUT AND INSTALL WEATHERSTRIPPING ON BOTH SIDES OF THE LIFT ENCLOSURE FIGURE [1].

#### B. EXTENDED VAN:

1. Using the supplied PVC Standoffs and screws, install the driver side panel **Figure [2]**.
2. Align and Install the passenger door panel **Figure [3]**.
3. Wipe surface clean and apply adhesive tape to molding under the sliding door.
4. Install sliding door panel from inside the vehicle **Figure [4]**.
5. Install and adjust weatherstripping bracket on the sliding door panel to completely seal the lift **Figure [5]**.
6. Install remaining panel to molding under the rocker panel.

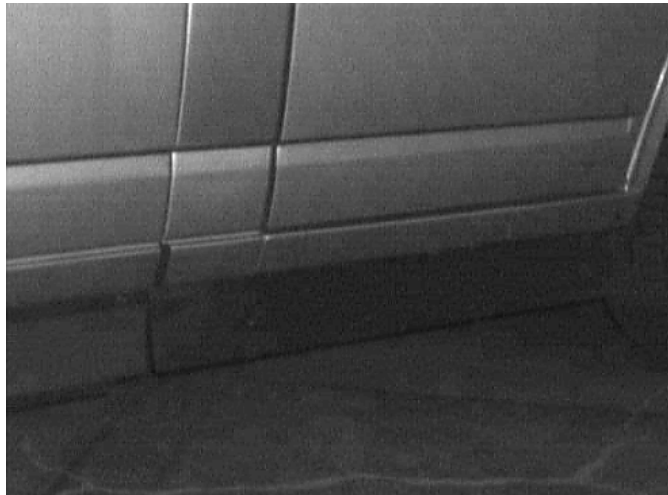
**NOTE:** Installation of these panels prevents use of the factory jack. A jack with a minimum lifting capacity of 2 tons, and capable of lifting 9 inches, can replace the original jack.



**FIGURE [1]: INSTALL WEATHERSTRIPPING ON BOTH SIDES OF LIFT BRACKET**



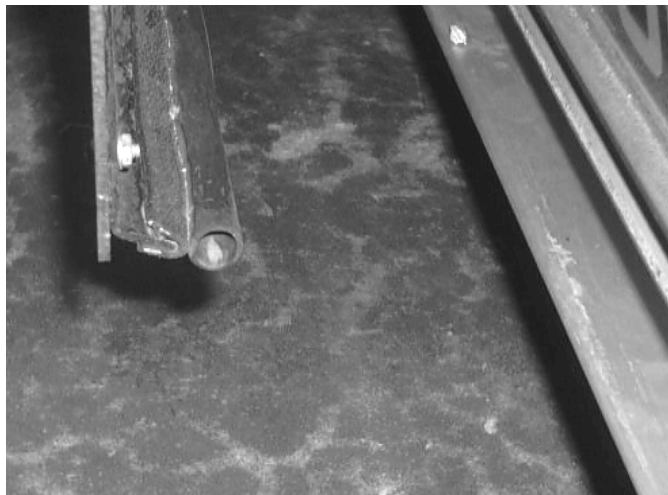
**FIGURE [2]: INSTALL DRIVER SIDE PANEL**



**FIGURE [3]: INSTALL PASSENGER SIDE DOOR PANEL**



**FIGURE [4]: INSTALL SLIDING DOOR PANEL**



**FIGURE [5]: INSTALL WEATHERSTRIPPING BRACKET**

## NOTES