



INSTALLATION INSTRUCTIONS S-SERIES LIFTS KICK-OUT SPRING KIT #1115

- Be certain that these supplemental instructions are read and understood completely before installation is attempted. You should also refer to the Service/Owner Manual for additional installation instructions and safety precautions.
- Check contents of this kit and notify Ricon immediately of any missing parts. Claims for damages that have occurred during shipping must be made to the shipper.

TABLE OF CONTENTS	PAGE
I. INTRODUCTION	1
II. S-1100 INSTALLATION	2
III. S-1200 INSTALLATION	3

- Under no circumstances is maintenance, repair, or adjustment of the product to be performed without the presence of an individual capable of giving aid.
- This lift is driven with hydraulic pressure generated by a hydraulic pump system. The fluid is highly pressurized and possibly very hot. Use extreme caution when doing maintenance and repairs. DO NOT disconnect hoses or fittings when lift is in motion.
- Give immediate attention to all injuries, and administer first-aid, or seek medical attention as necessary.
- Protective eye shields and clothing should be worn during maintenance, repair, and adjustment of the lift.
- Work in a properly ventilated area.
- Check for hidden obstructions before drilling and cutting. Avoid interference with wiring, fuel tank, fuel lines, hydraulic lines, subfloor members, etc.
- Read and understand all instructions before attempting to operate the product.
- Read and understand all instructions before attempting to perform maintenance, repairs, or adjustments to the product.
- Read and comply with warning labels attached to lift.
- Refer to S-Series Service Manual for part numbers of replacement parts mentioned here.

I. INTRODUCTION

The following instructions are intended to cover installation of the Kick-Out Spring Kit for all S-Series lifts. This kit includes all the parts needed to complete the installation. Please follow these instructions thoroughly and do not cut any corners, or eliminate any steps. Call Ricon Product Support if you need assistance.

A. TOOLS REQUIRED

1/4 Allen Wrench
7/16 Wrench
Center punch
Drill Motor with 3/8 Chuck
Size "L" Drill Bit

II. S-1100 SERIES KICK-OUT SPRING INSTALLATION

A. PREPARATION OF DRILL MOUNTING HOLES

NOTE: Inspect lift to verify if the lift has factory pre-drilled holes. Continue to Step B installation if pre-drilled holes are present. If the pre-drilled holes are not present then continue with preparation of drill mounting holes.

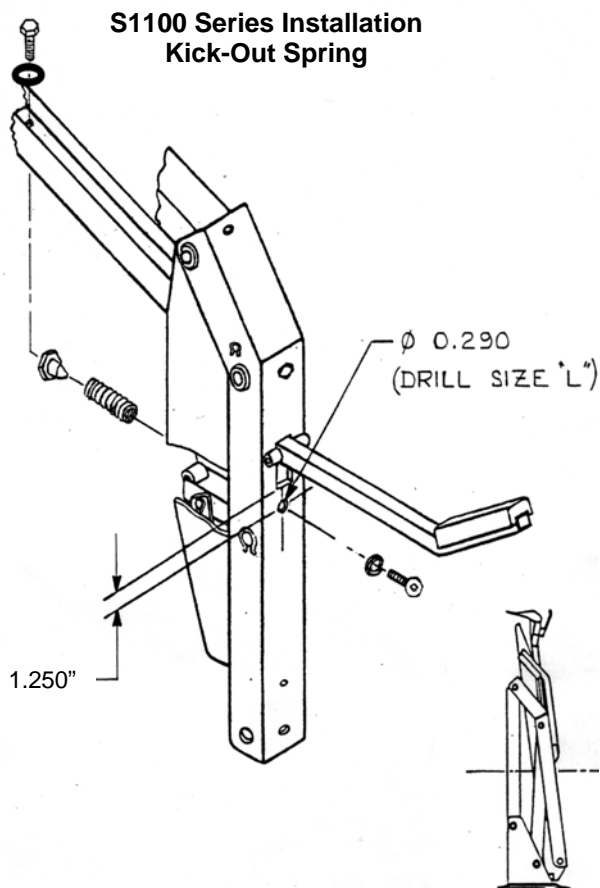
1. Stow lift.
2. Locate mounting hole locations on vertical arms as illustrated on **Figure [1]**.
3. Spot these locations with center punch and drill through each vertical arm.
4. Once through vertical arm, carefully align drill bit as square as possible with vertical arm surface and drill through lower parallel arm **Figure [1]**.
5. Remove all burrs before proceeding.

NOTE: Location of hole on the vertical arm is important, and should not vary vertically more than $\pm 1/32$ ".

B. INSTALLATION OF SPRING AND SPRING GUIDE

1. Using 1/4-20X1" Button head screws provided, install spring inside vertical arm as shown **Figures [1], [2], [3]**.
2. Install spring guide on bottom face of lower parallel arm using 1/4-20X1/2 bolt as shown **Figures [1] & [3]**.
3. Be sure lift closes normally after installation. Spring guide must engage spring to assure proper operation.

NOTE: Some spring bases may not be perfectly square. If so, install the spring so that it points upward.



**FIGURE [1]: HARDWARE LOCATIONS ON
S1100 SERIES LIFTS**

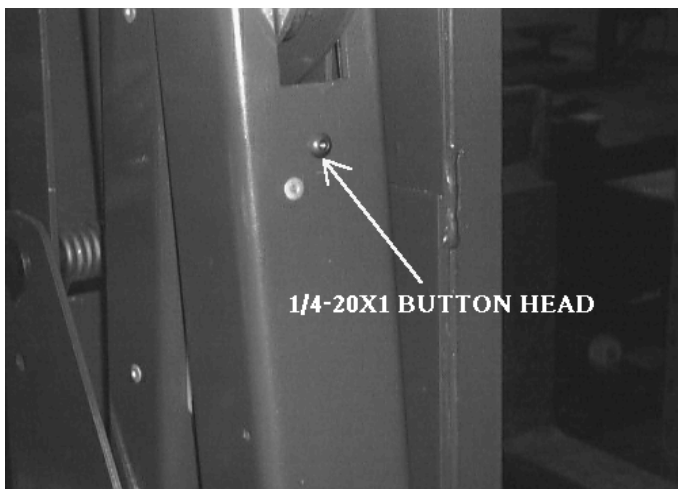


FIGURE [2]: LOCATION OF 1/4-20X1 BUTTON HEAD



FIGURE [3]: LOCATION OF SPRING MOUNTED

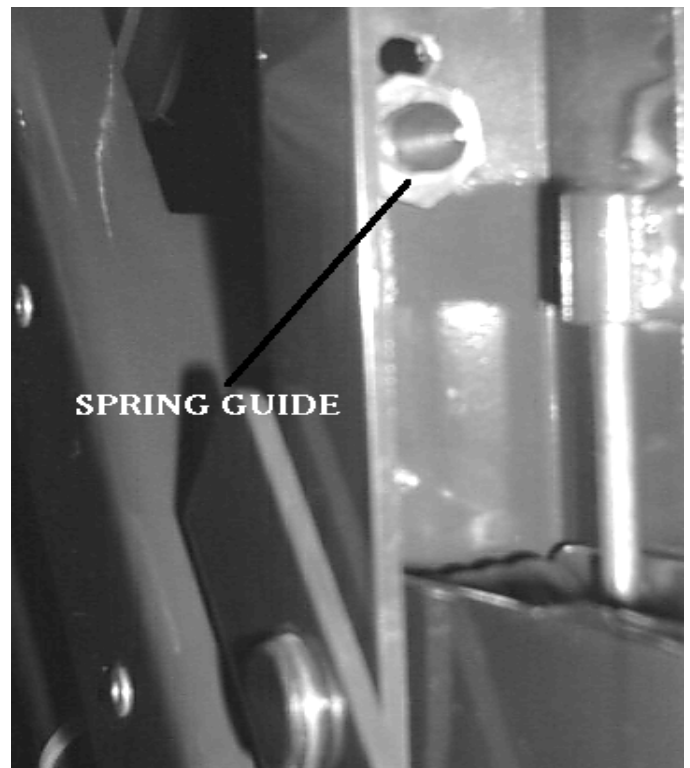


FIGURE [4]: SPRING GUIDE INSTALLED

III. S-1200 SERIES KICK-OUT SPRING INSTALLATION

A. PREPARATION OF DRILL MOUNTING HOLES

NOTE: Inspect lift to verify if the lift has factory pre-drilled holes. Continue to Step B installation if pre-drilled holes are present. If the pre-drilled holes are not present then continue with preparation of drill mounting holes.

1. Stow lift.
2. Locate mounting hole locations on vertical arms as illustrated on **Figure [5]**.
3. Spot these locations with center punch and drill through each vertical arm.
4. Once through vertical arm, carefully align drill bit as square as possible with vertical arm surface and drill through upper link knuckle arm **Figure [5]**.
5. Remove all burrs before proceeding.

NOTE: Location of hole on the vertical arm is important, and should not vary vertically more than $\pm 1/32"$.

B. INSTALLATION OF SPRING AND SPRING GUIDE

1. Using 1/4-20X1" Button head screws provided, install spring inside vertical arm as shown **Figures [2], [3], [5]**.
2. Install spring guide on bottom face (under) of knuckle lever using 1/4-20X1/2" bolt as shown **Figures [4] & [5]**.
3. Be sure lift closes normally after installation. Spring guide must engage spring to assure proper operation.

NOTE: Some spring bases may not be perfectly square. If so, install the spring so that it points upward.

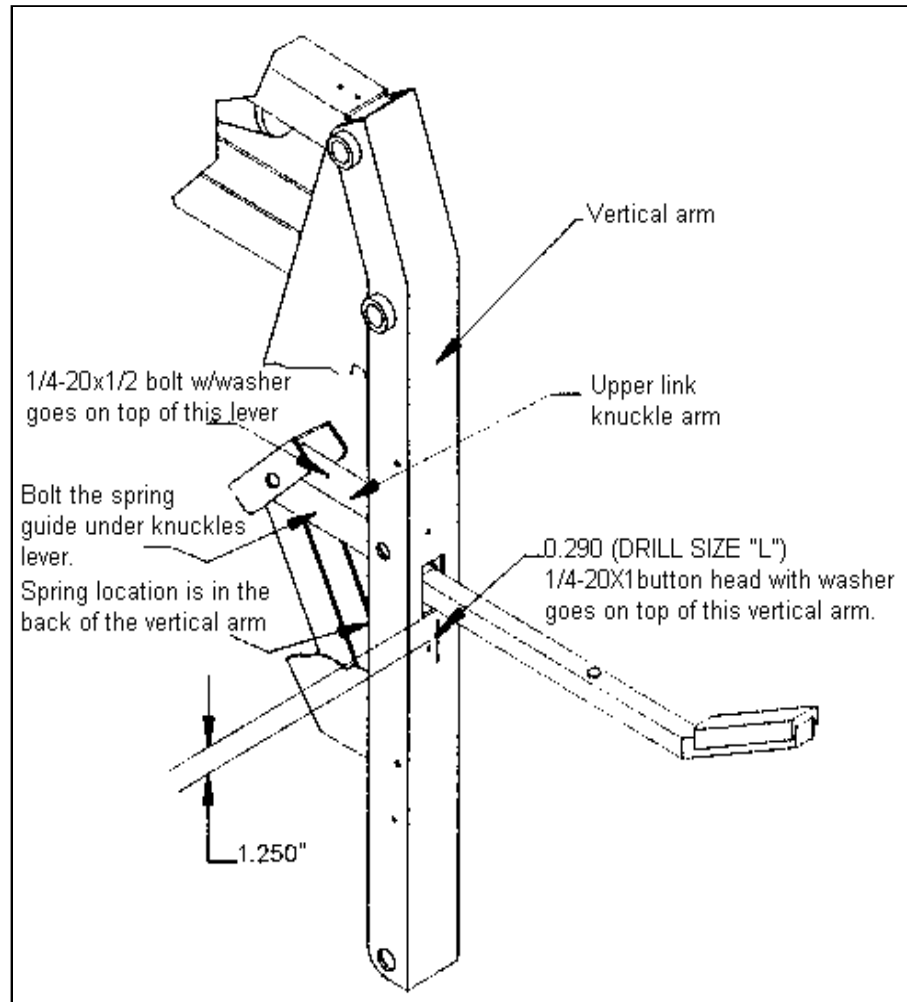


FIGURE [5]: HARDWARE LOCATIONS ON S1200 SERIES LIFTS

NOTES