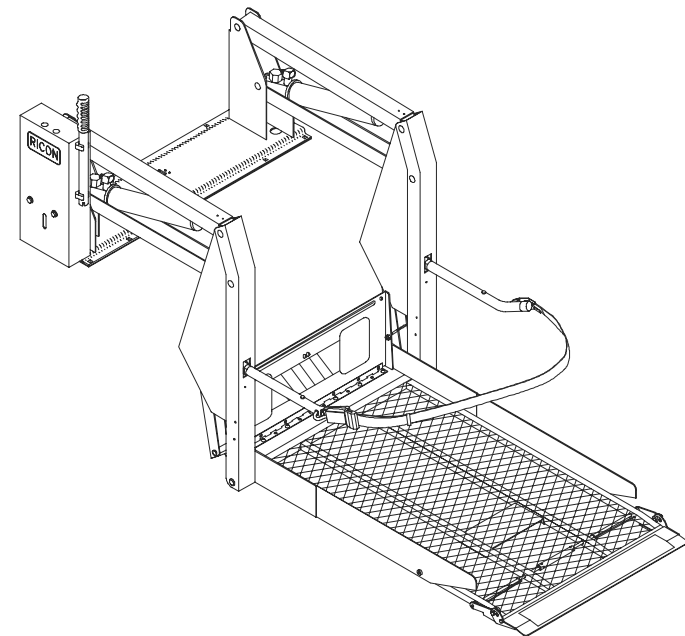




Ricon®

A Wabtec company

**S-Series®
Transit Use
Wheelchair Lift**



**-PRINT-
OPERATOR MANUAL**

10/10/11

32DSST01.B

©2011 RICON CORPORATION

Printed in the United States of America

-HOME-

All Rights Reserved

U.S. Patent Nos: 5,228,538; 5,308,215; 5,373,915; 5,445,488; 5,605,431; 5,944,473

Australian Patent Nos: 661127; 687066 Canadian Patent No: 2,129,821

German Patent No: EP 0625896 B1 U.K. Patent No: EP 0625896 B1

Other U.S. and foreign patents pending.



This RICON product must be installed and serviced by a RICON dealer or qualified service technician.

The operator must refer to this manual for operating instructions, then retain it for future reference by a RICON dealer or qualified service technician who perform service and repair.

Customer Name: _____
Installing Dealer: _____
Date Installed: _____
Serial Number: _____

REVISION RECORD

REV	PAGES	DESCRIPTION OF CHANGE	ECO
32dsst01. B	Cover	Update to illustration and registered trademark logos.	6560
	i	Update to cover information.	
	1-1	Update to registered trademark.	
	1-2	Update to warranty information.	
	2-1	Update to Safety Precautions.	
	2-1	Update to Figure 2-2 and caption.	
	2-3	Update to Figure 2-4.	
	3-1	Update to registered trademark.	
	3-1	Update to Caution note.	
END OF LIST			

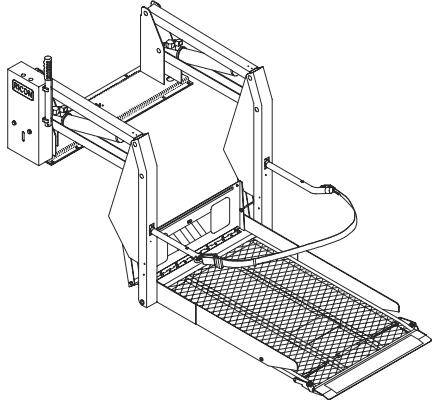
S-SERIES TRANSIT USE TABLE OF CONTENTS

<i>Chapter:</i>	<i>Page</i>
I. INTRODUCTION	1-1
A. RICON FIVE-YEAR LIMITED WARRANTY	1-2
B. SHIPMENT INFORMATION.....	1-3
C. GENERAL SAFETY PRECAUTIONS	1-3
D. MAJOR LIFT COMPONENTS	1-4
II. OPERATING INSTRUCTIONS	2-1
A. SAFETY PRECAUTIONS.....	2-1
B. DAILY SAFETY CHECK	2-2
C. LIFT FUNCTIONS	2-3
D. CONTROLS AND INDICATORS.....	2-4
• CONTROL PENDANT	2-4
• INTERLOCK INDICATOR LIGHT	2-4
• OPTIONAL DOOR OPERATOR CIRCUIT BREAKER	2-4
• CONTROL SYSTEM CIRCUIT BREAKER.....	2-4
• PUMP SOLENOID LED STATUS INDICATOR	2-5
• MAIN CIRCUIT BREAKER.....	2-5
• MANUAL BACK-UP PUMP	2-5
E. LIFT OPERATION.....	2-6
1. ENTERING VEHICLE	2-7
2. EXITING VEHICLE	2-7
3. STOWING PLATFORM	2-8
4. MANUAL OPERATION.....	2-8
III. MAINTENANCE	3-1
A. ADDITIONAL MAINTENANCE INFORMATION	3-1
B. CLEANING	3-1
C. MAINTENANCE SCHEDULE	3-1
D. LIFT DECALS	3-4

This page intentionally left blank.

I. S-SERIES® TRANSIT USE INTRODUCTION

The RICON S-Series® Transit Use Wheelchair Lift provides wheelchair access to vans and buses. The patented movement provides smooth, safe entry and exit and easily lifts up to 800 pounds (364 kilograms). It is to be operated by a trained attendant. The lift contains a powerful electro-hydraulic pump that includes a built-in manual backup pump. If the lift loses electrical power, it can be raised or lowered manually.



By using the lift control switches, the lift is unfolded out from the vehicle (deployed). The user boards the large non-skid platform and the operator uses the control switches to gently lower the platform to the ground. After the user departs, the platform is raised and folded into the vehicle (stowed). The lift is also available with a platform that splits and folds when stowed, providing easy vehicle access through the lift.

This manual contains warranty information, safety precautions, operating instructions, and maintenance information. It is important to user safety that the lift operator be completely familiar with the operating instructions. Once the lift is installed, it is very important that the lift be prop-

erly maintained by following the Ricon recommended maintenance and inspection instructions provided in **Chapter III**.

If there are questions about this manual, or additional copies are needed, please contact Ricon Product Support at one of the following locations:

Ricon Corporation
7900 Nelson Road
Panorama City, CA 91402.....(818) 267-3000
Outside (818) Area Code(800) 322-2884
World Wide Website..... www.riconcorp.com

Ricon U.K. Ltd.
Littlemoss Business Park, Littlemoss Road
Droylsden, Manchester
United Kingdom, M43 7EF (+44) 161 301 6000

A. RICON FIVE-YEAR LIMITED WARRANTY

RICON CORPORATION FIVE-YEAR LIMITED WARRANTY

Ricon Corporation (Ricon) warrants to the original purchaser of this product that Ricon will repair or replace, at its option, any part that fails due to defective material or workmanship as follows:

- Repair or replace parts for a period of one year from the date of purchase.
- Labor costs for specified parts replaced under this warranty for a period of one year from the date of purchase. A Ricon rate schedule determines the parts covered and labor allowed.
- Repair or replace lift power train parts for a period of five years from the date of purchase. A list of parts covered can be obtained from Ricon Product Support.

If You Need to Return a Product: Return this product to Ricon. Please give as much advance notice as possible, and allow a reasonable amount of time for repairs.

This Warranty does not cover:

Malfunction or damage to product parts caused by accident, misuse, lack of proper maintenance, neglect, improper adjustment, modification, alteration, the mechanical condition of the vehicle, road hazards, overloading, failure to follow operating instructions, or acts of Nature (i.e., weather, lightning, flood).

Note: Ricon recommends that this product be inspected by a Ricon dealer or qualified service technician at least once every six months, or sooner, if necessary. Any required maintenance should be performed at that time.



WARNING!

**THIS PRODUCT HAS BEEN DESIGNED AND MANUFACTURED TO EXACT SPECIFICATIONS.
MODIFICATION OF THIS PRODUCT IN ANY RESPECT CAN BE DANGEROUS.**

This warranty is void if:

- The product has been installed or maintained by someone other than a Ricon dealer or qualified service technician.
- The product has been modified or altered in any respect from its original design without written authorization by Ricon.

Ricon disclaims liability for any personal injury or property damage that results from operation of a Ricon product that has been modified from the original Ricon design. No person or company is authorized to change the design of this Ricon product without written authorization by Ricon.

Ricon's obligation under this warranty is exclusively limited to the repair or exchange of parts that fail within the applicable warranty period.

Ricon assumes no responsibility for expenses or damages, including incidental or consequential damages. Some states do not allow the exclusion or limitation of incidental or consequential damages, so the above limitation or exclusion may not apply.

Important: The warranty registration card must be completed and returned to Ricon within 20 days after installation of this Ricon product for the warranty to be valid. The warranty is not transferable.

The warranty gives specific legal rights, and there may be other rights that vary from state to state.

B. SHIPMENT INFORMATION

- When the product is received, unpack the product and check for freight damage. Claims for any damage should be made to the carrier immediately.
- Be sure the installation kit contains all items listed on the kit packing list. Please report any missing items immediately to Ricon Product Support. The warranty and owner registration cards must be completed and returned to Ricon within 20 days for the warranty to be valid.

NOTE: The Sales/Service Personnel must review the Warranty and Operator Manual with the user to be certain that they understand the safe operation of the product. Instruct the user to follow the operating instructions without exception.

C. GENERAL SAFETY PRECAUTIONS

The following general safety precautions must be followed during installation, operation, and maintenance:

- To avoid injury, always exercise caution when operating and be certain that hands, feet, legs, and clothing are not in the path of product movement.
- Read and thoroughly understand the operating instructions before attempting to operate.
- Inspect the product before each use. If an unsafe condition, unusual noises or movements exist, do not use it until the problem is corrected.
- Stand clear of doors and platform and keep others clear during operation.
- The product requires regular periodic maintenance. A thorough inspection is recommended at least once every six months. The product should be maintained at the highest level of performance.

D. MAJOR LIFT COMPONENTS

The references used throughout this manual are illustrated in **Figure 1-1** and defined in **Table 1-1**. Refer to **Chapter IV "Parts Diagrams and Lists"** for more details.

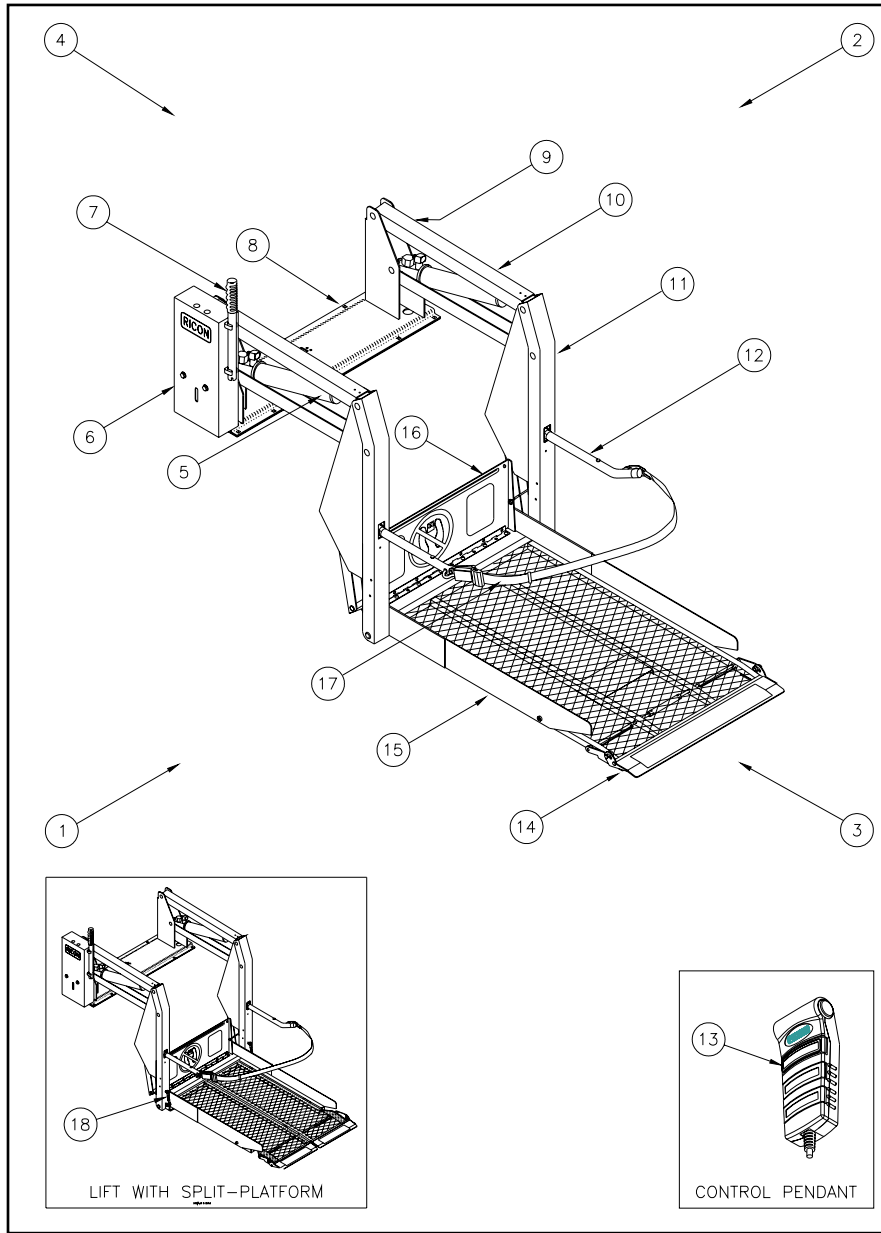


FIGURE 1-1: TRANSIT USE WHEELCHAIR LIFT

TABLE 1-1: S-SERIES TRANSIT LIFT COMPONENT TERMINOLOGY		
REF.	NAME	DESCRIPTION
1	Left	Position references when lift is viewed from outside of vehicle.
2	Right	
3	Front	
4	Rear	
5	Hydraulic Cylinder	(Left and Right) Telescoping steel tube, which converts hydraulic pressure into lifting force.
6	Hydraulic Power Unit	Contains pump used to create hydraulic pressure to raise and fold lift, as well as a valve to unfold and lower lift.
7	Manual Backup Pump Handle	Used to operate manual back up-pump when electrical power is not functional.
8	Baseplate Assembly	Assembly that bolts securely to the vehicle floor.
9	Serial Number Location	Location of serial number decal.
10	Top/Bottom Arms	(Left/Right) Upper and lower links connecting vertical arm to base assembly.
11	Vertical Arm	(Left/Right) Connects platform and top/bottom arms.
12	Handrail	(Left/Right) Provide a hand-hold for platform occupant.
13	Control Pendant	Hand-held device used to control the lift operating functions.
14	Front Rollstop	Front barrier prevents the wheelchair from slow, inadvertent rolling off of the platform during lift operation.
15	Platform	Component of lift where the wheelchair and occupant sit during "Up" and "Down" operations.
16	Bridgeplate (Inboard Rollstop)	Barrier prevents wheelchair from rolling off of the platform during lift operation.
17	Occupant Restraint Belt	Electrically interlocked safety belt that is intended to prevent acceleration of wheelchair from platform. Lift will not operate unless belt is properly engaged.
18	Tie-Rods	(Left/Right) Links used on split platform models (only) that cause the platform to split as it unfolds.
END OF TABLE		

This page intentionally left blank.

II. S-SERIES® TRANSIT USE OPERATING INSTRUCTIONS

This chapter contains safety precautions, daily safety check instructions, control and indicator descriptions and operating instructions for the RICON S-Series® Transit Use Wheelchair Lift. This chapter must be thoroughly understood before attempting to use the lift.

A. SAFETY PRECAUTIONS

Comply with the following safety precautions when operating the lift:

- Refer to **Figure 2-1**. Deploying lift when vehicle is on sloped ground is hazardous. Always operate lift with vehicle parked on level ground.

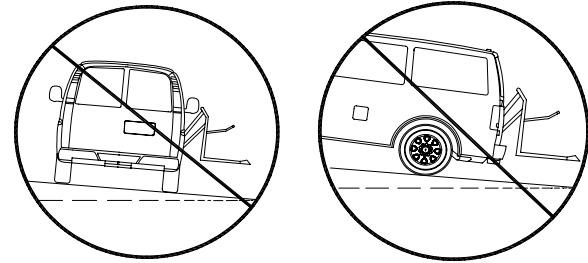


FIGURE 2-1: DO NOT DEPLOY LIFT WHEN VEHICLE IS ON SLOPED GROUND

- Vehicle must be safely parked with parking brake ON before using lift.
- Inspect lift prior to each use. DO NOT use if an unsafe condition exists or unusual noises or movements are noticed. Contact a Ricon dealer or qualified service technician for repair.
- Read and comply with all warning labels and symbols affixed to wheelchair lift.
- Refer to **Figure 2-2**. Due to variations in the size and configuration of mobility aids, for maximum safety, Ricon recommends that passengers always face outward when riding the lift platform.

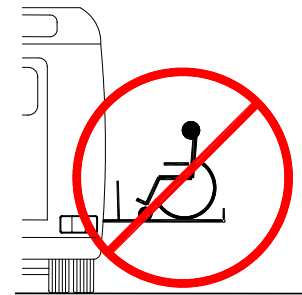


FIGURE 2-2: RICON RECOMMENDS PASSENGERS FACE OUTBOARD WHEN RIDING LIFT PLATFORM

- It is never safe for a wheelchair occupant to exit a vehicle facing inboard. It is not safe to rely on a threshold warning device (audible or other) to confirm that it is safe to exit vehicle while facing inboard. Exiting the vehicle while facing outboard allows for visual confirmation that the lift platform has been raised in the event that the threshold warning device is inoperative or unheard and prevents the occupant from exiting the vehicle backwards when the platform is still on the ground.
- When exiting vehicle, verify that platform is at same height as floor and front rollstop is up and locked.
- Do not place large equipment inside vehicle that can prevent pivoting of a wheelchair. Be-

ing able to pivot assures that a passenger can safely exit facing outward.

- The raised front rollstop prevents slow and unintentional rolling off of the platform. It is not intended to stop a fast-moving wheelchair, which might tip forward if the small front wheels collide with the rollstop.
- Be certain wheelchair fits safely on platform; it must not extend beyond edges or interfere with rising and locking of front rollstop.
- Do not operate with a load in excess of 800 lbs (364 kgs).
- Keep arms, legs, and clothing away from moving lift parts.
- The lift is intended for one wheelchair and its occupant or one standee. Do not overload lift.
- Refer to **Figure 2-3**. Do not stand in front of lift while deploying platform.



FIGURE 2-3: STAND CLEAR OF PLATFORM

- Keep others clear while operating lift.
- Do not allow an untrained person to operate lift.
- Careful supervision is necessary if used near children.
- Do not allow anyone to stand on bridgeplate. A bent bridgeplate can interfere with the platform as it rises and lowers.
- Lock wheelchair brakes when on platform (power chair users must turn off power and set brake).
- Use great care in wet conditions, because the wheelchair brakes are less effective if wheels or platform are wet.
- Never leave platform outside of vehicle. Return platform to stowed position after use.
- Do not load an oversize wheelchair into vehicle if it is too large to pivot freely inside vehicle.

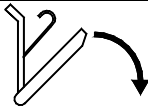
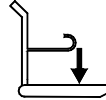
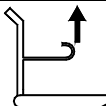

Read and understand these safety precautions. Review them periodically and ask other operators to read them as well. Contact a Ricon dealer or call Ricon Product Support if there are questions.

B. DAILY SAFETY CHECK

Inspect the lift before each use and check that the following conditions are met before operating:

- All functions operate properly. DO NOT use if unusual noises or movements exist, and contact a Ricon dealer or qualified Service Technician for repair.
- Vehicle interlock is operating properly.
- No objects that may interfere with operation are present.
- General appearance and lubrication are satisfactory and all fasteners are tight.

C. LIFT FUNCTIONS

TABLE 2-1: LIFT FUNCTIONS		
FUNCTION		DESCRIPTION
	DEPLOY	Platform unfolds/deploys out of vehicle from stowed position. (If equipped with a power door operator, the doors automatically open before lift deploys.)
	DOWN	Platform is lowered from vehicle floor level position to ground level. (The rollstop automatically lowers when platform reaches ground level.)
	UP	Platform is raised from ground level to vehicle floor level. (The rollstop automatically rises when platform leaves ground level.)
	STOW	Platform folds/stows from vehicle floor level to stowed position. (If equipped with a power door operator, the doors automatically close after lift stows.)
END OF TABLE		

NOTE: The up and down functions do not operate if platform is in stowed position.

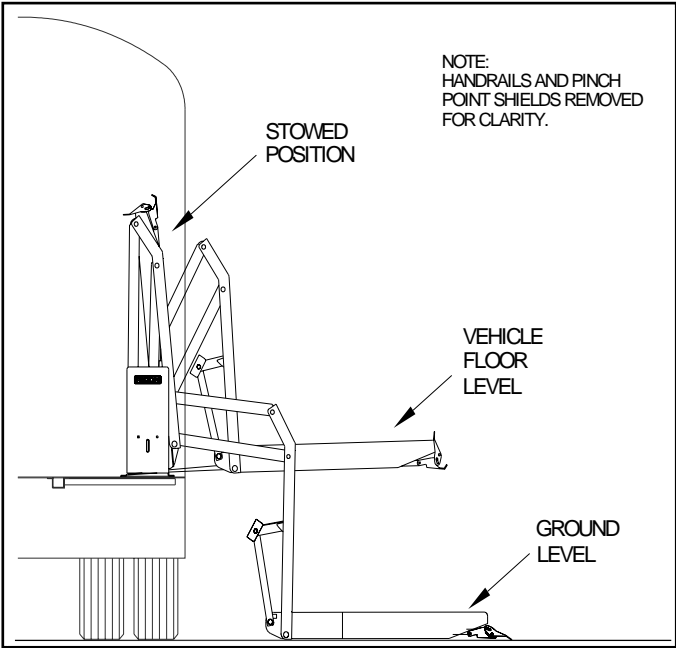


FIGURE 2-4: PLATFORM POSITIONS

D. CONTROLS AND INDICATORS

 WARNING
THE LIFT CAN OPERATE ONLY WHEN VEHICLE MANUFACTURER INTERLOCK CIRCUITRY IS ACTIVATED. NEVER ATTEMPT TO OPERATE LIFT WITH INTERLOCK BYPASSED. REFER TO VEHICLE OWNER/OPERATOR MANUAL FOR INTERLOCK INSTRUCTIONS BEFORE OPERATING LIFT.

■ Control Pendant

Refer to **Figure 2-5**. The lift is operated with two rocker buttons located on a hand-held, hard-wired remote-control pendant. Each lift function is controlled by pushing one end of the appropriate button. Pushing the DEPLOY button unfolds platform from vehicle, and pushing the STOW button folds platform into vehicle. Pushing the DOWN button lowers platform towards ground, and pushing the UP button raises platform towards floor. Buttons must be held depressed until function completes. The pendant is stowed on a wall-mounted clip inside vehicle.

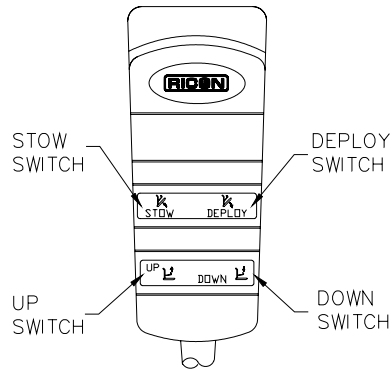


FIGURE 2-5: CONTROL PENDANT

■ Interlock Indicator Light

Refer to **Figure 2-6** on following page. The purpose of a vehicle interlock system is to prevent operation of lift if an unsafe condition is present. When vehicle interlock systems are interfaced with lift circuitry, the interlock indicator shows whether or not interlock is operating properly. The light is interfaced with electrical system so that no matter which interlock system/method is used, the light will be ON when interlock allows electrical power to lift and OFF when interlock has disabled power to lift. When there is no interlock system installed, the light stays illuminated at all times.

■ Optional Door Operator Circuit Breaker

Refer to **Figure 2-6** on following page. The circuit breaker for optional door operator is found on hydraulic pump assembly. In case of a door operator short circuit, the circuit breaker button will “pop-out”. If pressing and releasing button does not reset power, **DO NOT** press and hold. Contact a Ricon dealer or qualified service technician for repair. Refer to appropriate Ricon Remote Power Door Operator Service/Owner Manual for a detailed description.

■ Control System Circuit Breaker

Refer to **Figure 2-6** on following page. The Control System Circuit Breaker is on hydraulic pump assembly. In case of a control system short circuit, circuit breaker button will “pop-out”. If pressing and releasing button does not reset power, **DO NOT** press and hold. Contact a Ricon dealer or qualified service technician for repair.

- Pump Solenoid LED Status Indicator

Refer to **Figure 2-6**. A second pump solenoid is installed next to the original pump solenoid and a LED is located between the 8A and 30A circuit breakers. The LED monitors the condition of the two solenoids. The LED is normally green when the pump is operating and off when the pump is off. For more information on this LED refer to the service manual 32DSST02.

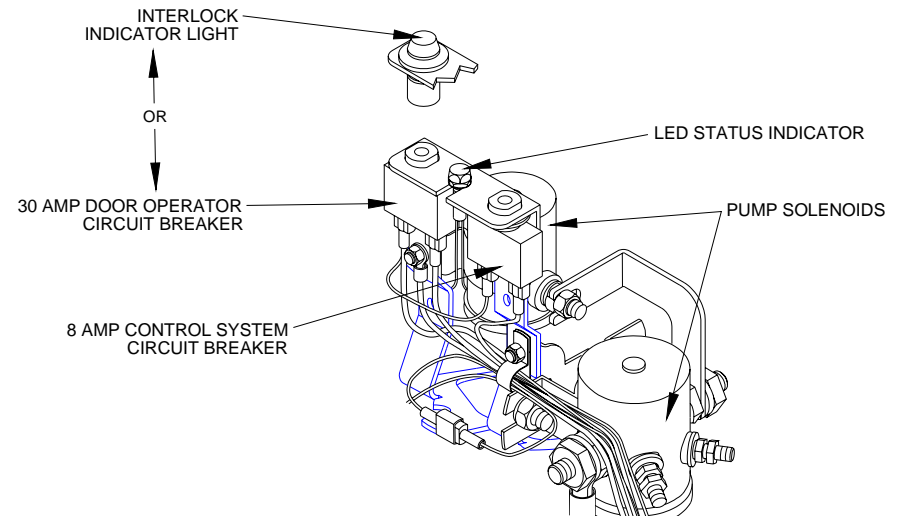


FIGURE 2-6: INDICATOR LIGHT, CIRCUIT BREAKERS, AND LED INDICATOR

- Main Circuit Breaker

Refer to **Figure 2-7**. The main circuit breaker is located in vehicle engine compartment and is designed to interrupt electrical power to lift electrical system when a short circuit occurs. In the event of a short circuit, the circuit breaker reset tab will “flip-down”. If pressing reset tab UP and releasing does not reset power, **DO NOT** press and hold tab. Contact a Ricon dealer or qualified service technician for repair.

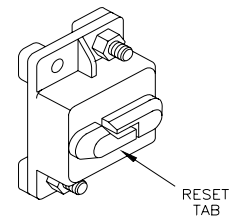


FIGURE 2-7: MAIN CIRCUIT BREAKER

- Manual Backup Pump

Refer to **Figure 2-8**. The manual backup pump is used to operate lift if electrical power is not functional. The controls for pump consist of a pump handle for raising lift platform and a pump release valve for lowering it. Instructions for operating manual pump are provided in the MANUAL OPERATION paragraph, which is part of the LIFT OPERATION section in this chapter.

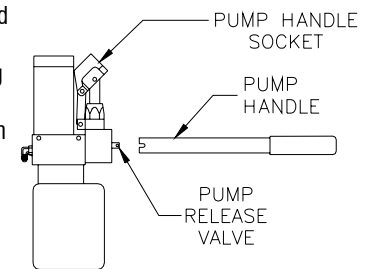


FIGURE 2-8: MANUAL BACKUP PUMP & HANDLE

E. LIFT OPERATION

 **WARNING**

IMPROPER USE OF LIFT CAN RESULT IN PERSONAL INJURY. USERS MUST READ AND FOLLOW OPERATING INSTRUCTIONS. ADDITIONAL COPIES OF OPERATOR MANUAL ARE AVAILABLE FROM:

RICON CORPORATION
7900 NELSON ROAD
PANORAMA CITY, CA 91402
(800) 322-2884 or (818) 267-3000

- DO NOT EXCEED RATED LOAD CAPACITY OF 800 POUNDS (364 KG).
- PRIOR TO USE, INSPECT WHEELCHAIR LIFT FOR PROPER FUNCTION, REQUIRED MAINTENANCE, OR DAMAGE. IF A PROBLEM EXISTS, DO NOT USE LIFT AND CONTACT A RICON DEALER OR QUALIFIED SERVICE TECHNICIAN FOR REPAIR.
- THIS LIFT IS FOR USE BY WHEELCHAIR OCCUPANTS AND STANDEES.

RICON CORPORATION DISCLAIMS LIABILITY FOR DAMAGE OR PERSONAL INJURY RESULTING FROM MODIFICATION TO LIFT, LACK OF MAINTENANCE OR REPAIR, NEGLIGENCE, ABUSE, OR FAILURE TO FOLLOW LIFT OPERATING INSTRUCTIONS.

- Before operating lift, be certain vehicle is safely parked on a level area away from traffic. Provide space for lift operation and passenger boarding.
- The lift operator must verify that area is clear before deploying platform. Be certain there are no obstacles beneath platform.
- Open doors completely if lift is not equipped with a power door operator. If equipped with a power door operator, the vehicle doors automatically open before platform unfolds and deploys, or closes after platform is folded and stowed.
- If so equipped, be certain that safety interlock mechanism (e.g. transmission, parking brake, etc.) is properly engaged before attempting to operate lift. The lift **will not** operate until this feature has been engaged properly.

 **WARNING**

ATTENDANT SHOULD ALWAYS REMAIN NEAR PASSENGER TO RENDER IMMEDIATE ASSISTANCE IF NECESSARY. KEEP OTHERS CLEAR WHEN OPERATING LIFT. BE CERTAIN WHEELCHAIR FITS PROPERLY ON PLATFORM AND DOES NOT CONTACT ROLLSTOP, WHICH WOULD PREVENT IT FROM LOCKING WHEN PLATFORM RISES.

1. ENTERING VEHICLE

NOTE: The occupant restraint belt must be fastened to enable the DEPLOY, DOWN, and UP motions; the platform will not operate unless this safety mechanism is connected. Turn pendant power switch on.

- a. **DEPLOY PLATFORM** - Push and hold DEPLOY button until platform completely unfolds from vehicle and stops at floor level.
- b. **LOWER PLATFORM** - Push and hold DOWN button until lift contacts ground and rollstop opens completely.
- c. Unfasten occupant restraint belt, carefully place wheelchair in center of platform, facing outward (away from vehicle), and lock wheelchair brakes.



- ✘ A Standee must stand near the center of the platform, facing in the direction of travel (into vehicle), and firmly grasp handrails.
- d. Fasten occupant restraint belt. Insert belt tongue into buckle and listen for “click” then “tug” on belt tongue to confirm belt is securely fastened.
- e. **RAISE PLATFORM** - Push and hold UP button until platform rises and stops automatically at vehicle floor level.
- f. Release wheelchair brakes, carefully board passenger into vehicle, and secure wheelchair.
- g. Refer to “STOWING PLATFORM” section on next page and stow platform.

2. EXITING VEHICLE

NOTE: The occupant restraint belt must be fastened to enable the DEPLOY and DOWN motions. The platform will not operate unless this safety mechanism is connected.

- a. **DEPLOY PLATFORM** - Push and hold DEPLOY button until platform completely unfolds from vehicle and stops at vehicle floor level.



- b. Fasten occupant restraint belt. Insert belt tongue into buckle and listen for “click” then “tug” on belt tongue to confirm belt is securely fastened.
- c. Carefully place wheelchair in center of platform, facing outward (away from vehicle), and lock wheelchair brakes.



- ✘ A Standee must stand near the center of the platform, facing in the direction of travel (away from vehicle), and firmly grasp handrails.
- d. **LOWER PLATFORM** - Push and hold DOWN button until platform settles at ground level and front rollstop is fully lowered.

- e. Unfasten occupant restraint belt, release wheelchair brakes, and carefully assist passenger off platform.
- f. Refer to "STOWING PLATFORM" section and stow platform.

3. STOWING PLATFORM

NOTE: The occupant restraint belt **must** be fastened to enable the STOW/DEPLOY and UP/DOWN functions. The lift will not operate unless this safety mechanism is properly engaged.

- a. Push and hold STOW switch until platform folds completely into vehicle.



- b. Close vehicle doors if lift is not equipped with a power door operator. (If equipped with a power door operator, the vehicle doors will automatically close after platform is folded and stowed.)

4. MANUAL OPERATION



Refer to **Figure 2-9**. If lift electrical power is not functional, the lift can be operated manually as follows:

- Open doors completely. If equipped with a power door operator, refer to appropriate Remote Power Door Operator Service Manual for manual operation instructions.

Deploy Platform

- 1) Override "Sto-Loc" feature by lifting inboard rollstop. This will separate "Sto-Loc" catch (attached to underside of inboard rollstop) from "Sto-Loc" latch (affixed to lift base assembly). If "Sto-Loc" is difficult to separate, use manual backup pump to raise lift slightly and thereby remove tension from catch; refer to "Stow Platform" paragraph in this section.
- 2) Insert notched end of pump handle into hole in hydraulic pump cover marked "RELEASE VALVE" and engage pump release valve.

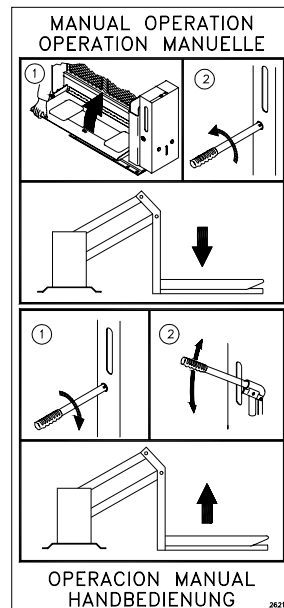


FIGURE 2-9: MANUAL OPERATION



- 3) Refer to **Figure 2-10**. Turn valve 1/4 turn COUNTER-CLOCKWISE to begin lowering platform. When platform reaches vehicle interior floor level turn valve CLOCKWISE to close; DO NOT OVER-TIGHTEN VALVE. Do not lower platform below vehicle floor level. The rear edge of inboard rollstop must rest flat against vehicle floor.

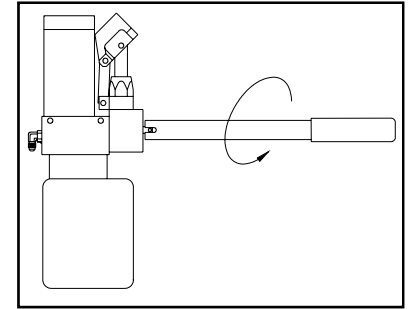


FIGURE 2-10: DEPLOY OR LOWER PLATFORM

Lower Platform

- 1) Turn valve 1/4 turn COUNTER-CLOCKWISE to begin lowering platform.
- 2) Hold valve OPEN until platform settles at ground level. Turn handle clockwise to CLOSE valve; DO NOT OVER-TIGHTEN VALVE.

Raise Platform

- 1) Refer to **Figure 2-11**. Check pump release valve to be certain it is closed.

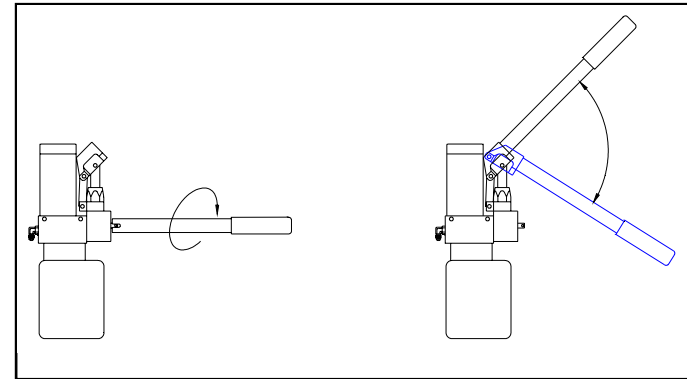


FIGURE 2-11: MANUAL BACK-UP PUMP – RAISE PLATFORM

- 2) Insert pump handle into pump handle socket. Operate pump to begin raising platform.
- 3) When platform reaches vehicle interior floor level turn valve CLOCKWISE to close; DO NOT OVER-TIGHTEN VALVE. Do not raise platform past vehicle floor level. The rear edge of inboard rollstop must rest flat against vehicle floor.

Stow Platform

- 1) Refer to **Figure 2-11**. Check pump release valve to be certain it is closed. DO NOT OVER TIGHTEN VALVE.
- 2) Insert pump handle into pump handle socket. Operate pump to begin raising platform.
- 3) Operate pump until lift is COMPLETELY folded inside vehicle.
- 4) Stow pump handle. Close vehicle doors.

This page intentionally left blank.

III. S-SERIES® TRANSIT USE MAINTENANCE

Regular maintenance of the RICON S-Series® Transit Use Wheelchair Lift will help optimize its performance and reduce the need for repairs. This chapter contains cleaning instructions, a maintenance schedule, and a diagram showing decal locations and their part numbers.

A. MAINTENANCE INFORMATION

Additional maintenance information is available in the S-Series Transit Use Service manual, part number 32DSST02. This manual is available from Ricon in printed hard copy, or at the Ricon website in PDF format. The website is located at www.riconcorp.com. Click on RICON CORPORATION and then DEALER'S ROOM at the website. Entry to the dealer's room will require a Dealer Number and a Password.

CAUTION!

THIS RICON PRODUCT IS HIGHLY SPECIALIZED. MAINTENANCE AND REPAIRS MUST BE PERFORMED BY A RICON DEALER OR QUALIFIED SERVICE TECHNICIAN USING RICON REPLACEMENT PARTS. MODIFYING OR FAILING TO PROPERLY MAINTAIN THIS PRODUCT WILL VOID WARRANTY AND MAY RESULT IN UNSAFE OPERATING CONDITIONS.

B. CLEANING

Regular cleaning with mild soap (i.e. dish soap, car wash liquid) and drying thoroughly will protect lift painted surfaces. Cleaning is especially important in areas where roads are salted in winter. Make sure that lift pivot points remain clear and clean prior to lubrication.

C. MAINTENANCE SCHEDULE

Under normal operating conditions, maintenance inspections are required at least every six months (1750 cycles) and a thorough inspection should be performed at service intervals referenced in **Table 3-1**. Service should be increased under conditions of heavier use (more than 10 cycles per day).

TABLE 3-1: MAINTENANCE SCHEDULE	
SERVICE POINT	ACTION TO PERFORM
DAILY SAFETY CHECK	
Overall Condition	Listen for any abnormal noises as lift operates (i.e., grinding or binding noises).
Control Pendant	Check that control pendant is not damaged and cable connectors are tight.
TWO-WEEK SAFETY CHECK	
Overall Condition	<ol style="list-style-type: none">1. Listen for any abnormal noises as lift operates (i.e., grinding or binding noises).2. Inspect underside of vehicle to be certain nothing is out of the ordinary.
Control Pendant	Check that control pendant is not damaged and cable connectors are tight.

TABLE 3-1: MAINTENANCE SCHEDULE



SERVICE POINT	ACTION TO PERFORM
Electrical Wiring	Inspect electrical wiring for frayed wires, chaffed wires, loose connectors, etc.
Vehicle Interlock	Place vehicle in NON-INTERLOCK mode and attempt to operate lift.
Decals	Be certain that all lift decals are affixed properly, clearly visible, and legible. Replace if necessary.
Handrails	Be certain that all handrail fasteners are properly tightened.
Lift Mountings and Support Points	<ol style="list-style-type: none"> 1. Be certain that all lift mounting and support points are in proper order and free from damage. 2. Be certain that all mounting bolts are sufficiently tight.
Main Lifting Pivots	Be certain all lifting frame pins are installed properly, free from damage and locked in position.
Platform and Platform Attachment Points	Be certain platform operates properly during lift functions without obstruction.
Inner Rollstop	<ol style="list-style-type: none"> 1. Be certain that inner rollstop operates properly during lift functions without obstruction(s). 2. Be certain that inner rollstop deploys fully as platform stops at proper vehicle floor level.
Platform Rollstop	Be certain that rollstop operates properly without obstruction when it contacts ground.
Hydraulic Power Unit	 CAUTION! Do not add fluid until platform is lowered to ground level. Adding fluid while lift is stowed will cause tank to overflow when platform is lowered.
	<ol style="list-style-type: none"> 1. Check for visible hydraulic fluid leakage. 2. Be certain backup pump manual release valve is slightly snug.
SIX-MONTH SAFETY CHECK (or @ 1750 cycles of operation)	
Handrails	Be certain that all handrail fasteners are properly tightened.
Cleaning and Lubrication	<ol style="list-style-type: none"> 1. Clean lift with a mild soap and wipe dry. Rub down all surfaces with light oil using a soft cloth to avoid rusting of material. Wipe clean any excess oil. 2. Following labeled directions on container, spray lubricant (Curtisol® Red Grease No.88167 or WD-40®), lubricate lift as specified in Lift Lubrication Points diagram. Wipe any excess grease from surrounding areas.
Hydraulic Power Unit	While platform is at GROUND LEVEL, be certain that pump hydraulic fluid level is maintained at required FULL level. Add only Texaco 01554 Aircraft Hydraulic Oil or equivalent U.S. mil spec H5606G fluid.

TABLE 3-1: MAINTENANCE SCHEDULE	
SERVICE POINT	ACTION TO PERFORM
 CAUTION! SAFETY CHECK MUST BE PERFORMED BY A RICON DEALER OR QUALIFIED SERVICE TECHNICIAN.	
ANNUAL SAFETY CHECK (or @ 3500 cycles of operation)	
Hydraulic Cylinder, Hoses and Fittings	<ol style="list-style-type: none"> 1. Check Hydraulic Cylinder for evidence of leaks. 2. Inspect hydraulic hoses for damage. 3. Be certain that all fittings are tightly secured.
END OF TABLE	

D. LIFT DECALS

Refer to **Figure 3-1**. Inspect decals at intervals in **Table 3-1**. Inspect for chipping, peeling, fading, and illegibility. Order replacement decal with part number in **Figure 3-1**, and apply where shown.

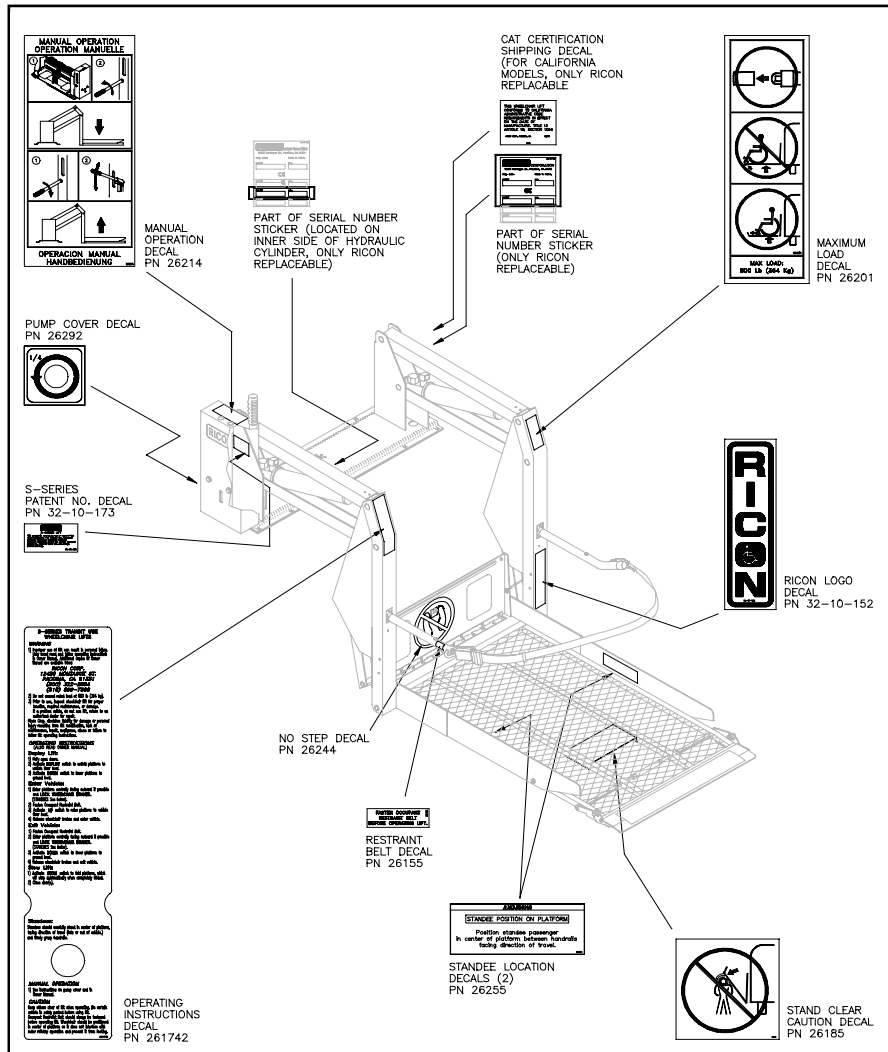


FIGURE 3-1: DECAL LOCATIONS AND PART NUMBERS