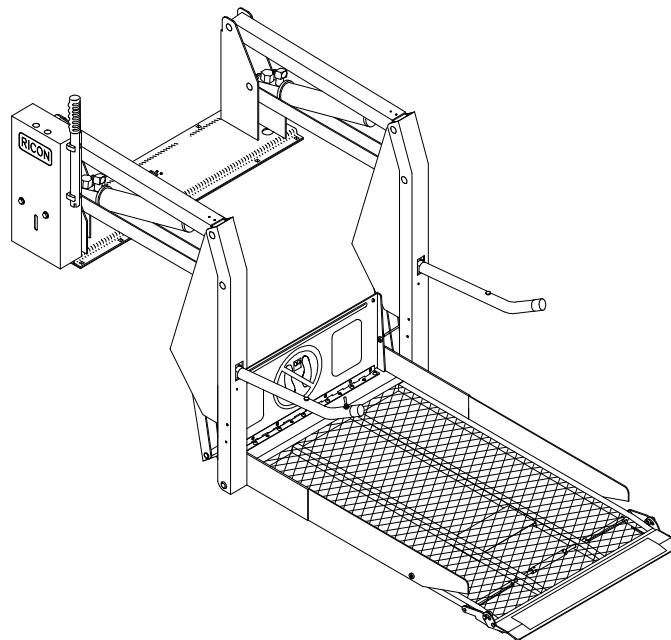


IV. PARTS DIAGRAMS AND LISTS

This chapter contains parts diagrams and parts lists for the RICON S-Series Personal Use Wheelchair Lift. An exploded view of each major lift assembly shows individual components and assemblies referenced by numbers. On each associated list is the reference number, a part description, the quantity used, and the Ricon part number. For part numbers of lift decals, refer to the “Decal Locations and Part Numbers” figure in Chapter II of this manual.

NOTE: To order a part: locate the part or assembly on an exploded view, note its reference number, find this number on the associated parts list (following page), and order the part number in the far right column. Most kits contain a single part (plus hardware). Therefore, you may need to order more than one kit if the part is used more than once on a major assembly.

NOTE: Some major lift components that are typically painted gray may also be available in other colors, such as red, yellow, and blue. These include the platform assembly, handrails, vertical arms, top and bottom arms, and baseplate assembly.



LIFT MODEL AND KIT NUMBERS	
PRODUCT NUMBERS	1100-P00100100 (first model in number sequence)
DOCUMENTATION KIT NUMBER	01071
PRODUCTION DECAL SET NUMBERS	XXXXLPXXXXXXX
SPARE DECAL KIT NUMBER	26014

PARTS DIAGRAM	PAGE
FIGURE 4-1: MONARCH HYDRAULIC POWER UNIT #1	4-2
FIGURE 4-2: MONARCH HYDRAULIC POWER UNIT #2	4-6
FIGURE 4-3: S-SERIES HYDRAULIC SYSTEM	4-8
FIGURE 4-4: S-SERIES ELECTRICAL SYSTEM	4-10
FIGURE 4-5: S-SERIES PENDANT	4-12
FIGURE 4-6: S-SERIES SOLID PLATFORM	4-14
FIGURE 4-7: S-SERIES SPLIT PLATFORM	4-16
FIGURE 4-8: S-SERIES TRAVELING FRAME	4-18
FIGURE 4-9: S-1200 HANDRAIL	4-22
LIFT SPECIFICATIONS	4-24, 25

DATE: 05/05/04
DWG. SSX00001
REV K

MONARCH HYDRAULIC POWER UNIT #1
 SERIAL NO's. 31000-31999
 SERIAL NO's. 35000 - PRESENT

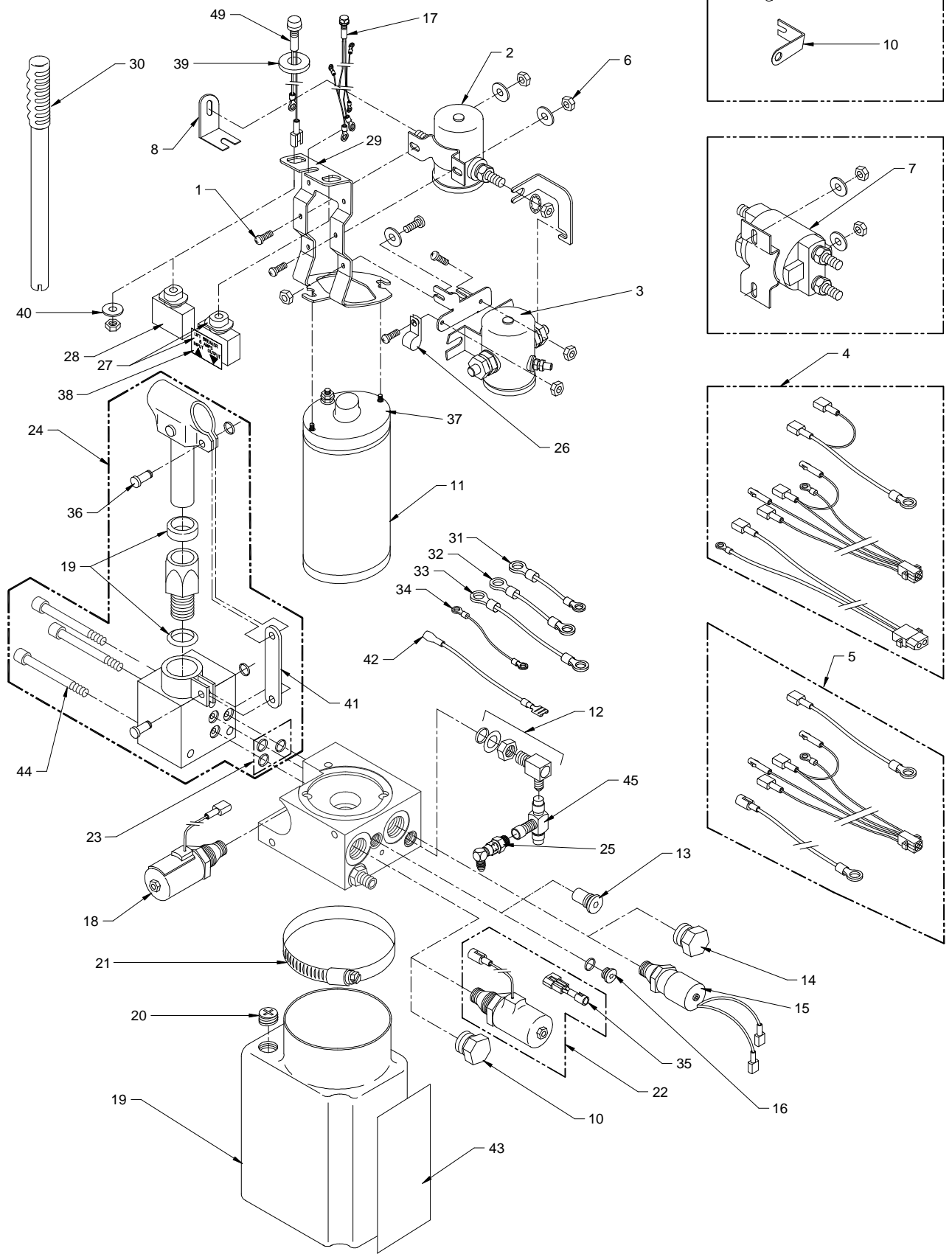


FIGURE 4-1: MONARCH HYDRAULIC POWER UNIT #1

**FIGURE 4-1: MONARCH HYDRAULIC POWER UNIT #1
S-SERIES (ALL MODELS) WHEELCHAIR LIFT
SERIAL NO's. 31000 – 31999; SERIAL NO's. 35000 - PRESENT**

REF.	DESCRIPTION	QTY.	PART NO.
1	SCREW, 10-24 X ½ PAN HEAD, SELF THREAD	3	28111T
2	SOLENOID, SPST, 12V	1	19066
3	SOLENOID, SPST, 24V	1	26449
4	HARNESS, PUMP, w/DOOR INTERLOCK, (S/N's 32000-95999)	1	V2-ES-100
	HARNESS, PUMP, w/DOOR INTERLOCK, (SN 96000 - present)	1	10069
5	HARNESS, PUMP, w/o DOOR INTERLOCK, (S/N's 32000-95999)	1	V2-ES-150
	HARNESS, PUMP, w/o DOOR INTERLOCK, (SN 96000 - present)	1	10335
6	NUT, NYLON INSERT, 10-24, BAG OF 10	3	13382
7	SOLENOID, DPST, 12V	1	20670
	SOLENOID, DPST, 24V	1	26450
8	BUS BAR, MOTOR, SP SOLENOID, (S/N's 52456-95999)	1	V2-ES-034
	BUS BAR (SN 96000 - present)	1	10807
9	BUS BAR, MOTOR, DP SOLENOID, (S/N's 32000-95999)	1	UV-ES-040
10	BUS BAR (SN 96000 - present)	1	13087
11-1	MOTOR ASSY, 12V, 3", MONARCH PUMP	1	V2-SH-115
11-2	MOTOR ASSY, 24V, 3", MONARCH PUMP	1	V2-ES-116
11-3	MOTOR ASSY, 12V ISKRA (SN 96000 - present)	1	14332
	MOTOR ASSY, w/BACKET, 12V ISKRA	1	14345
11-4	MOTOR ASSY, 24V ISKRA (SN 96000 - present)	1	14333
	MOTOR ASSY, w/BACKET, 24V ISKRA	1	14346
12	FITTING ASSY, ELBOW, #4 STD THD X #4 JIC, w/HDWR	1	18235
13	DECELERATION VALVE ASSY	1	V2-SH-279
14	PLUG, 3/4-16 CAVITY, w/O-RING	2	V2-SH-001
15	SWITCH, HYDRAULIC PRESSURE	1	15207
16	PLUG w/O-RING	1	V2-SH-182
17	LIGHT ASSY, INDICATOR, 12V	1	19067
18-1	SPOOL VALVE ASSY, 12V, ADA APPLICATIONS	1	01176
18-2	SPOOL VALVE ASSY, 24V, ADA APPLICATIONS	1	01177
19	RESERVOIR, RICON POWER UNIT, PLASTIC	1	V2-SH-108
20	PLUG, BREATHER, RESERVOIR,	1	V2-SH-106
21	HOSE CLAMP	1	V2-SH-109
22-1	HYDRAULIC POPPET VALVE ASSY (down valve), 12V	1	V2-SH-105
22-2	HYDRAULIC POPPET VALVE ASSY (down valve), 24V	1	V2-SH-136
23	SEAL KIT, MANUAL BACK-UP PUMP	1	V2-SH-220
24	BACK-UP PUMP, MANUAL	1	V2-SH-210
25	FITTING ASSY, SNL, 1/4J X 1/4J, STEEL	1	VS-SH-06
26-1	CABLE CLAMP, 3/8", NYLON, (BAG OF 10)	1	18660
26-2	CABLE CLAMP, 3/16", NYLON, (BAG OF 10)	1	19798
26-3	CABLE CLAMP, 5/16", NYLON, (BAG OF 10)	1	19772
26-4	CABLE CLAMP, ½", NYLON, (BAG OF 10)	1	19774
27	CIRCUIT BREAKER, 8 AMP, w/HDWR & DECAL	1	V2-SH-005
28	CIRCUIT BREAKER, 30 AMP, w/HDWR	1	26510
29-1	BRACKET, SOLENOID MOUNTING (S/N's 32000-95999)	1	V2-SH-127
29-2	BRACKET, SOLENOID ISKRA (S/N 96000-)	1	10507
30	HANDLE, MANUAL BACK-UP PUMP	1	V2-SH-111
31	JUMPER, DPDT SOLENOID, BLK, 10GA, 5.0"	1	ELJ00121
32	JUMPER, DPDT SOLENOID w/ISOLATED GROUND, BLK, 10GA, 5.5"	1	ELJ00122
33	JUMPER, DPDT SOLENOID, RED, 10GA, 5.5"	1	ELJ02055
34	JUMPER, DPDT SOLENOID, ORG, 18GA, 5.0"	1	ELJ03061
35	DIODE BLOCK ASSEMBLY	1	08232
36	PIN & RETAINING RING	2	V2-SH-017
37-1	KIT, PUMP MOTOR BRUSH SET (located inside motor) (S/N's 32000-95999)	1	V2-SH-115B
37-2	KIT, PUMP MOTOR BRUSH SET (located inside motor) (S/N 96000 - present)	1	14334
38	DECAL, 8 AMP CIRCUIT BREAKER	1	26290
39	ADAPTER, .625 D-HOLE TO .484 ROUND	1	V2-ES-059
40	WASHER, FLAT, 7/16 (S/N's 61878 - present), (BAG OF 10)	1	19716

REF.	DESCRIPTION	QTY.	PART NO.
41	BRACKET, TENSION LINK, MONARCH PUMP	1	V2-SH-149
42-1	JUMPER, SWITCH, PRESSURE, RH PUMP	1	15860
42-2	JUMPER, SWITCH, PRESSURE, LH PUMP	1	15861
43	DECAL, OIL LEVEL WARNING	1	32-10-154
44	SCREW, SHC, 1/4-20X2	3	28490
45	FITTING, SRT, 1/4J, STEEL	1	V2-SH-012
46**	KIT, RETROFIT, 2nd SOLENOID, 12V	1	19068
47**	KIT, RETROFIT, 2nd SOLENOID, 24V	1	19843
48**	HARNESS, EXT, RH PUMP	1	V2-ES-155
49-1	LIGHT, LIFT ARMED INDICATOR, 12V (S/N's 61878 - present)	1	UL-ES-034
49-2	LIGHT, LIFT ARMED INDICATOR, 24V (S/N's 61878 - present)	1	V2-ES-016
41	BRACKET, TENSION LINK, MONARCH PUMP	1	V2-SH-149
42-1	JUMPER, SWITCH, PRESSURE, RH PUMP	1	15860
42-2	JUMPER, SWITCH, PRESSURE, LH PUMP	1	15861
43	DECAL, OIL LEVEL WARNING	1	32-10-154
44	SCREW, SHC, 1/4-20X2	3	28490

** Item not shown.

This page intentionally left blank.

MONARCH HYDRAULIC POWER UNIT #2
 SERIAL NO's. 32000-34999

DATE: 05/05/04

DWG. SS800002

REV. B

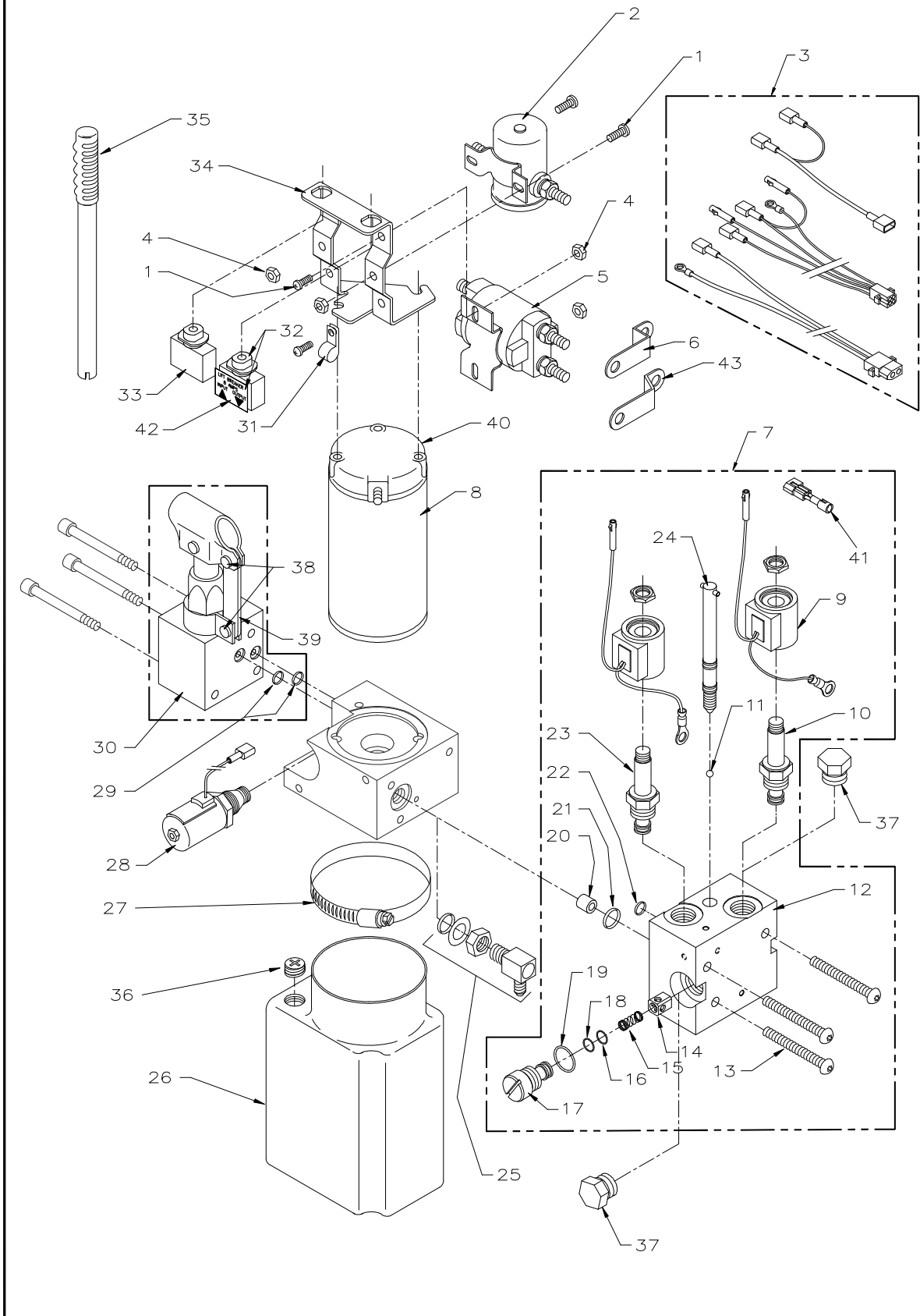
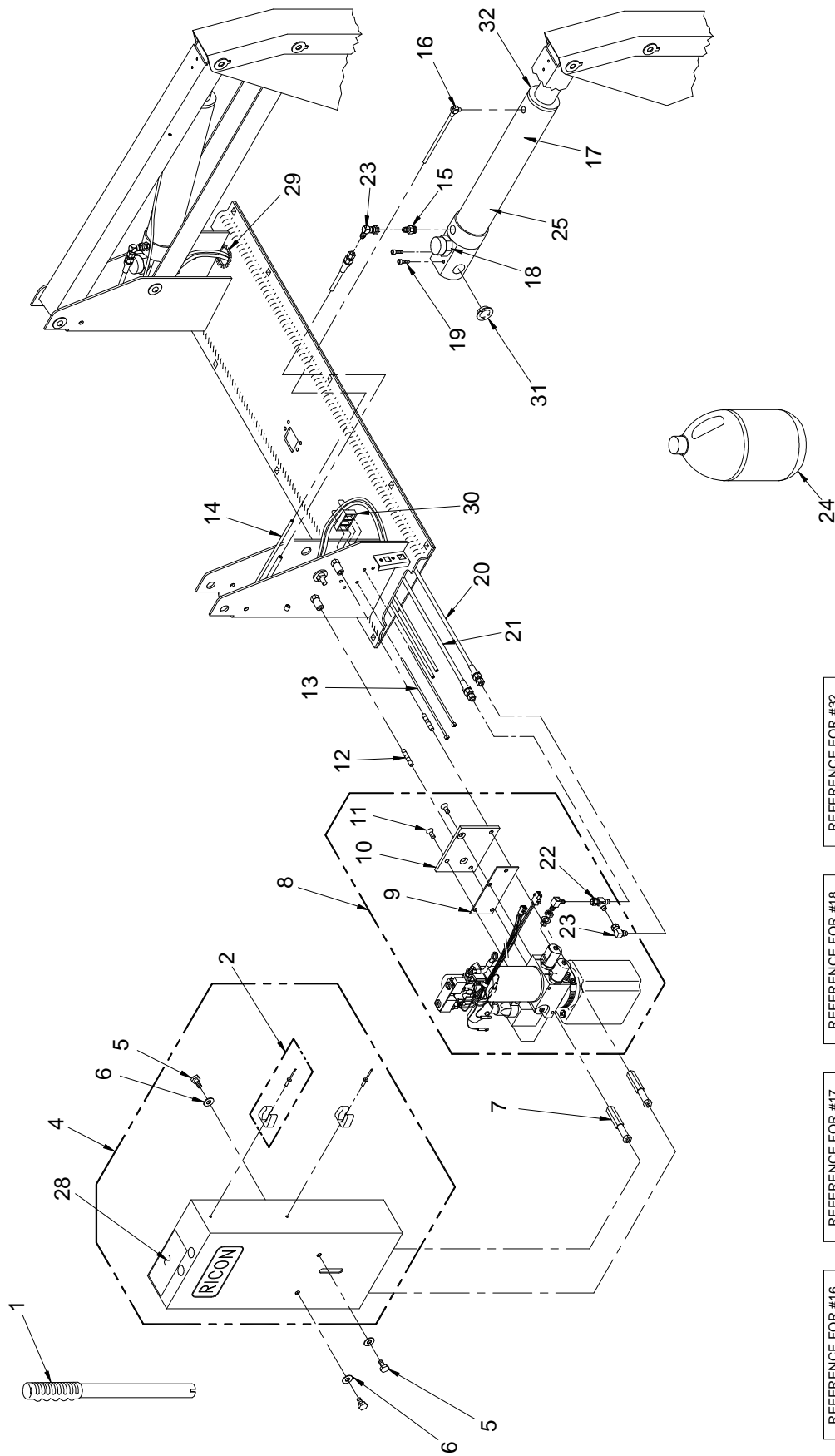


FIGURE 4-2: MONARCH HYDRAULIC POWER UNIT #2

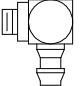
**FIGURE 4-2: MONARCH HYDRAULIC POWER UNIT #2
S-SERIES (ALL MODELS) WHEELCHAIR LIFT
SERIAL NO's. 32000 - 34999**

REF.	DESCRIPTION	QTY.	PART NO.
1	SCREW, 10-24 X 1/2 PAN HEAD, SELF THREAD	3	28111T
2-1	SOLENOID, SPST, 12V	1	26444
2-2	SOLENOID, SPST, 24V	1	26449
3	HARNESS, PUMP, w/DOOR INTERLOCK, (S/N's 32000-95999)	1	V2-ES-100
4	NUT, HEX, 10-24, BAG OF 10	3	14489
5-1	SOLENOID, DPST, 12V	1	26447
5-2	SOLENOID, DPST, 24V	1	26450
6-1	BUS BAR, MOTOR, SP SOLENOID	1	V2-ES-030
6-2	BUS BAR, MOTOR, DP SOLENOID	1	UV-ES-040
7-1	KIT, HYDRAULIC COMBINATION BLOCK, 12V	1	01149
7-2	KIT, HYDRAULIC COMBINATION BLOCK, 24V	1	01148
8-1	MOTOR ASSY, 12V, (MONARCH PUMP)	1	V2-SH-115
8-2	MOTOR ASSY, 24V, (MONARCH PUMP)	1	V2-SH-116
9-1	VALVE COIL ASSY, 12V	2	V2-SH-143A
9-2	VALVE COIL ASSY, 24V	2	V2-SH-142A
10	VALVE, 2-WAY, NC SPOOL	1	V2-SH-145
11	BALL BEARING, STEEL, 1/4" DIA.	1	V2-SH-144
12	BLOCK, COMBINATION, POSI-LOC/SLO-BLOC	1	V2-SH-157
13	SCREW, BUTTON HEAD, 5/16-18 X 2 1/4"	3	282294
14	POPPET, MOVABLE ORIFICE	1	V2-SH-152
15	SPRING, COMP, .310D X .75L	1	25453
16	O-RING, NITRILE, .36ID X .07 WIDTH	1	24012
17	CARTRIDGE, FIXED ORIFICE	1	V2-SH-150
18	BACKER, NITRILE, .39ID X .053 WIDTH	1	24012B
19	O-RING, NITRILE, .644 ID X .087 WIDTH	1	24908
20	BUSHING, .28ID, .47OD X .44	1	V2-SH-153
21	O-RING, NITRILE, .609ID X .139 WIDTH	1	24208
22	O-RING, NITRILE, .426ID X .070 WIDTH	1	24013
23	VALVE, 2-WAY, NC POPPET	1	V2-SH-138
24	STEM ASSY, MANUAL RELEASE	1	V2-SH-159
25	FITTING, "L", 1/4 JIC X 9/16 STRAIGHT THREAD	1	V2-SH-14
26	RESERVOIR, POWER UNIT, PLASTIC	1	V2-SH-108
27	HOSE CLAMP	1	V2-SH-109
28-1	POPPET VALVE ASSY, HYDRAULIC, 12V	1	V2-SH-105
28-2	POPPET VALVE ASSY, HYDRAULIC, 24V	1	V2-SH-136
29	O-RING, NITRILE, .301ID X .070 WIDTH	2	24011
30	BACK-UP PUMP, MANUAL	1	V2-SH-110
31	CABLE CLAMP, 3/8"	1	25516
32	CIRCUIT BREAKER, 8 AMP, w/ DECAL	1	V2-SH-005
33	CIRCUIT BREAKER, 30 AMP	1	26510
34	BRACKET, SOLENOID MOUNTING	1	V2-SH-127
35	HANDLE, MANUAL BACK-UP PUMP	1	V2-SH-111
36	PLUG, RESERVOIR, BREATHER	1	V2-SH-106
37	PLUG, 3/4 CAVITY, w/O-RING	2	V2-SH-132
38	PIN & RETAINING RING	2	V2-SH-017
39	BRACKET, TENSION LINK	1	V2-SH-149
40	KIT, PUMP MOTOR BRUSH SET (located inside motor)	1	V2-SH-115B
41	DIODE BLOCK ASSEMBLY	1	08232
42	DECAL, 8 AMP CIRCUIT BREAKER	1	26290
43	BUS BAR, MOTOR, DP SOLENOID	1	UV-ES-040


S-SERIES HYDRAULIC SYSTEM
 SERIAL NO's. 32000 - PRESENT



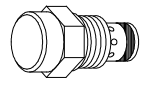
- REFERENCE FOR #16




1" FITTING, MALE, 10-32 X 1/4 BARB
- REFERENCE FOR #17



REBUILD KIT, HYDRAULIC CYLINDER
- REFERENCE FOR #18



FLOW CONTROL, PRESSURE COMPENSATED, FIXED RATE
- REFERENCE FOR #32



GLAND NUT, 1.50", WITH SEAL

FIGURE 4-3: S-SERIES HYDRAULIC SYSTEM

**FIGURE 4-3: S-SERIES HYDRAULIC SYSTEM
(ALL MODELS) WHEELCHAIR LIFT
SERIAL NO's. 32000 - PRESENT**

REF.	DESCRIPTION	QTY.	PART NO.
1	HANDLE, MANUAL BACKUP PUMP	1	V2-SH-111
2	KIT, TOOL CLIP, W/HDWR	2	19557
4-1	COVER, PUMP, RH (S.N.'s 31000-35000-present)	1	V2-CV-121
4-2	COVER, PUMP, LH (S.N.'s. 31000-31999 & 35000-present)	1	V2-CV-220
4-3	COVER, PUMP, LH (S.N.'s. 6000-31000)	1	V2-CV-021
5	SCREW, HEX 5/16-18 X 0.625, (BAG OF 10)	3	14495
6	WASHER, 5/16" FLAT, SAE, (BAG OF 10)	1	13350
7	HEX ROD, PUMP STANDOFF	2	V2-CV-015
8-1	S-SERIES PUMP, 12V, NOTOP, UV RES, 2KPSI	1	PM212002007
8-2	S-SERIES PUMP, 12V, W/INTLK & ANTIDRIFT	1	PM212090110
8-3	S-SERIES PUMP, 12V, w/COMMON BRACKET (s/n's 31000 - 31999 & 35000 - present)	1	PM212090100
8-4	S-SERIES PUMP, 24V, w/COMMON BRACKET (s/n's 31000 - 31999 & 35000 - present)	1	PM224110100
8-5	S-SERIES PUMP, 12V, w/COMMON BRACKET (s/n's 32000 - 34999)	1	PM212090100
8-6	S-SERIES PUMP, 24V, w/COMMON BRACKET (s/n's 32000 - 34999)	1	PM224110100
8-7	S-SERIES PUMP, 12V, COM BRKT, W/O INTLK, RH STD, DCL	1	PM212090308
8-8	S-SERIES PUMP, 24V, COM BRKT, W/O INTLK, RH STD, DCL	1	PM224100108
9	PLATE, PUMP COVER MOUNT	1	V2-AC-71
10	PLATE, PUMP MOUNTING	1	V2-AC-70
11	SOCKET, FLAT, 5/16-18 X 3/4", (BAG OF 10)	2	14499
12	STUD, 5/16-18 X 1.75", (BAG OF 10)	2	14500
13	CABLE TIE, 5.5", BLACK (BAG OF 10)	2	25697
14	TUBE, POLYURETHANE, BLK, 6MM x 4MM	9'	22-02-230
15-1	ADAPTOR, STRT 1/4 NPT MALE (S.N.'s. 32000-63999)	2	V2-SH-84
15-2	ADAPTOR - # 6 SAE MALE - # 4 JIC MALE (S.N.'s. 64000 - present)	2	26591
16	FITTING, "L", MALE 10-32 - 1/4 BARB	2	V2-SH-16
17	KIT, CYLINDER REPAIR, W-PISTON ASSY, GLAND NUT AND SEAL	2	V2-SH-56
18	KIT, FLOW CONTROL, PRESSURE COMPENSATED, FIXED RATE (KIT OF 2)	1	30968
19	SOCKET CAP, 1/4 - 20 X 1, BAG OF 10	4	14491
20	HOSE ASSY, 61" X 1/4 JIC X 1/4 JIC	1	V2-SH-009
21	HOSE ASSY, 26" X 1/4 JIC X 1/4 JIC	1	V2-SH-008
22	FITTING, RUN TEE, 1/4 JIC M-M-F	1	V2-SH-012
23	FITTING, "L", 1/4 JIC M-F SWIVEL	3	VS-SH-06
24	OIL, HYDRAULIC, TEXACO #15, MEETS MIL-H-5606G	1 GAL	20-16-051
25	CYLINDER ASSY, S-1100/1200	2	VS-SH-105
28	DECAL, MANUAL OPERATION (TOP, w/CB)	1	26214
29	GROMMET, CATERPILLAR, 3/16	8.5"	26647
30	SPACER, CABLE AND HOSE	2	25557
31	BUSHING, 3/4"ID X 3/8W	4	25381
32	GLAND NUT AND SEAL	2	13009

S-SERIES ELECTRICAL SYSTEM
 SERIAL No's. 32000 - PRESENT

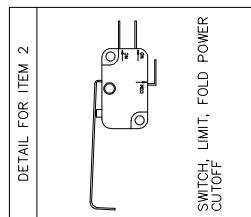
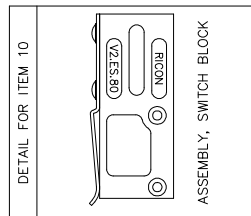
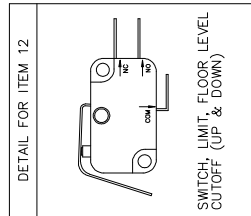
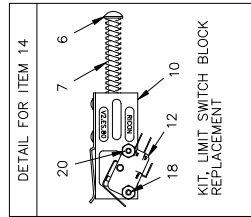
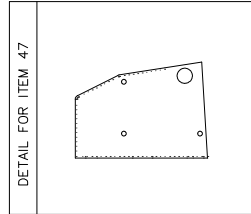
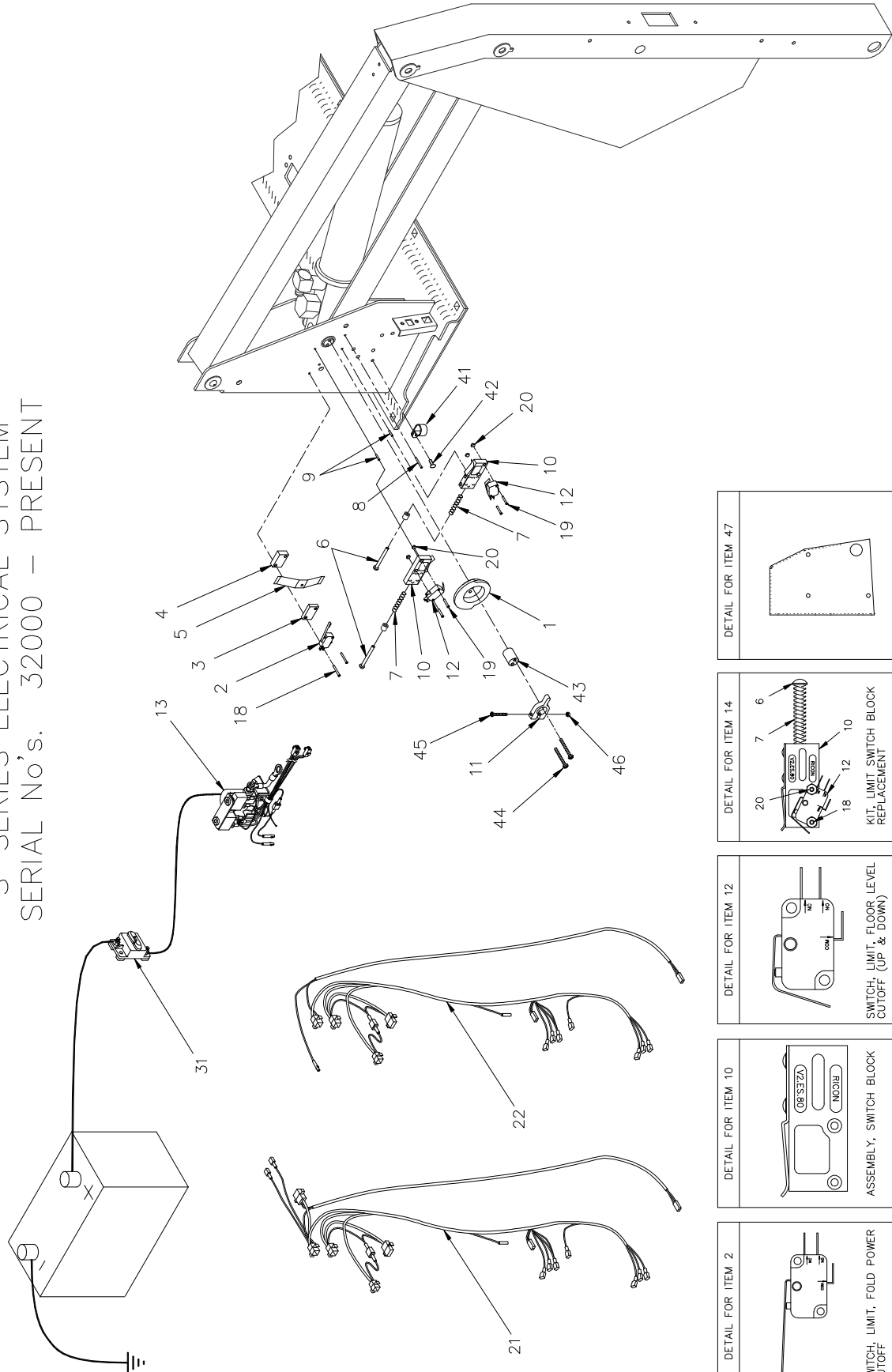


FIGURE 4-4: S-SERIES ELECTRICAL SYSTEM

**FIGURE 4-4: S-SERIES ELECTRICAL SYSTEM
(ALL MODELS) WHEELCHAIR LIFT
SERIAL NO's. 32000 - PRESENT**

REF.	DESCRIPTION	QTY.	PART NO.
1-1	CAM, LIFT CONTROL w/SET SCREW (S/N's 32000-62559)	1	V2-ES-99
1-2	CAM, LIFT CONTROL (S/N's 62560 - present)	1	V2-AC-107
2	SWITCH, LIMIT, FOLD POWER CUTOFF	1	V2-ES-111
3	BLOCK, FOLD CUTOFF SWITCH OFFSET, 1/4" THICK	1	V2-ES-78
4	BLOCK, FOLD CUTOFF SWITCH OFFSET, 3/8" THICK	1	V2-ES-79
5	SPRING, RETAINING, UPPER/LOWER SWITCH BLOCK	1	V2-ES-95
6	SCREW, ROUND HEAD, 10-24 X 2" (ADJUSTING), BAG OF 10	2	14497
7	SPRING, COMPRESSION, .30 OD X 2.06L	2	V2-ES-93
8	ROLL PIN, .94 X 1 (TIMING PIN), BAG OF 10	1	14498
9	ROLL PIN, .94 X .50 (SWITCH BLOCK MOUNT), BAG OF 10	2	14496
10	SWITCH BLOCK ASSY, (UPPER & LOWER)	2	V2-ES-82
11-1	ADJUSTING COLLAR ASSY, FOLD POWER CUTOFF (S/N's 32000-62559)	1	V2-BU-89
11-2	ACTUATOR, FOLD CUTOFF (S/N's 62560 - present)	1	V2-AC-089
12	SWITCH, LIMIT, FLOOR LEVEL POWER CUTOFF (UP & DOWN)	2	V2-ES-110
13	COMPONENTS, SOLENOID BRACKET (for replacement parts, refer to hydraulic power unit parts list drawing	—	—
14	KIT, LIMIT SWITCH BLOCK REPLACEMENT	2	V2-ES-61
18	SCREW, 4-40 X 1.25 PAN HEAD, BAG OF 10	2	15908
19	SCREW, 4-40 X .75 PAN HEAD, BAG OF 10	4	15909
20	NUT, HEX, 4-40, BAG OF 10	4	15903
21	ELECTRICAL HARNESS, MAIN, w/DOOR OPERATOR INTERCONNECT	1	V2-ES-051
22	ELECTRICAL HARNESS, MAIN, w/o DOOR OPERATOR INTERCONNECT	1	V2-ES-050
31	CIRCUIT BREAKER, MAIN	1	01010K
41	CLAMP, CABLE, 11/16" (S/N's 53168 - present)	1	255161
42	MS, 10-24 X 1/2 PHIL PAN, BAG OF 10	1	13304
43	PIN, EXTENSION FOLD CUTOFF (S/N's 62560 - present), BAG OF 10	1	15914
44	MS 10-24 X 1 3/4 PHIL PAN (S/N's 62560 - present), BAG OF 10	2	15915
45	MS 8-32 X 1 1/4 PHIL PAN (S/N's 62560 - present), BAG OF 10	1	15906
46	NUT-HEX 8-32 NYLON INSERT (S/N's 62560 - present), BAG OF 10	1	15907
47 *	COVER, ELEC SYSTEM	1	V2-CV-110

* Used for left hand installation only.

S-SERIES PENDANT

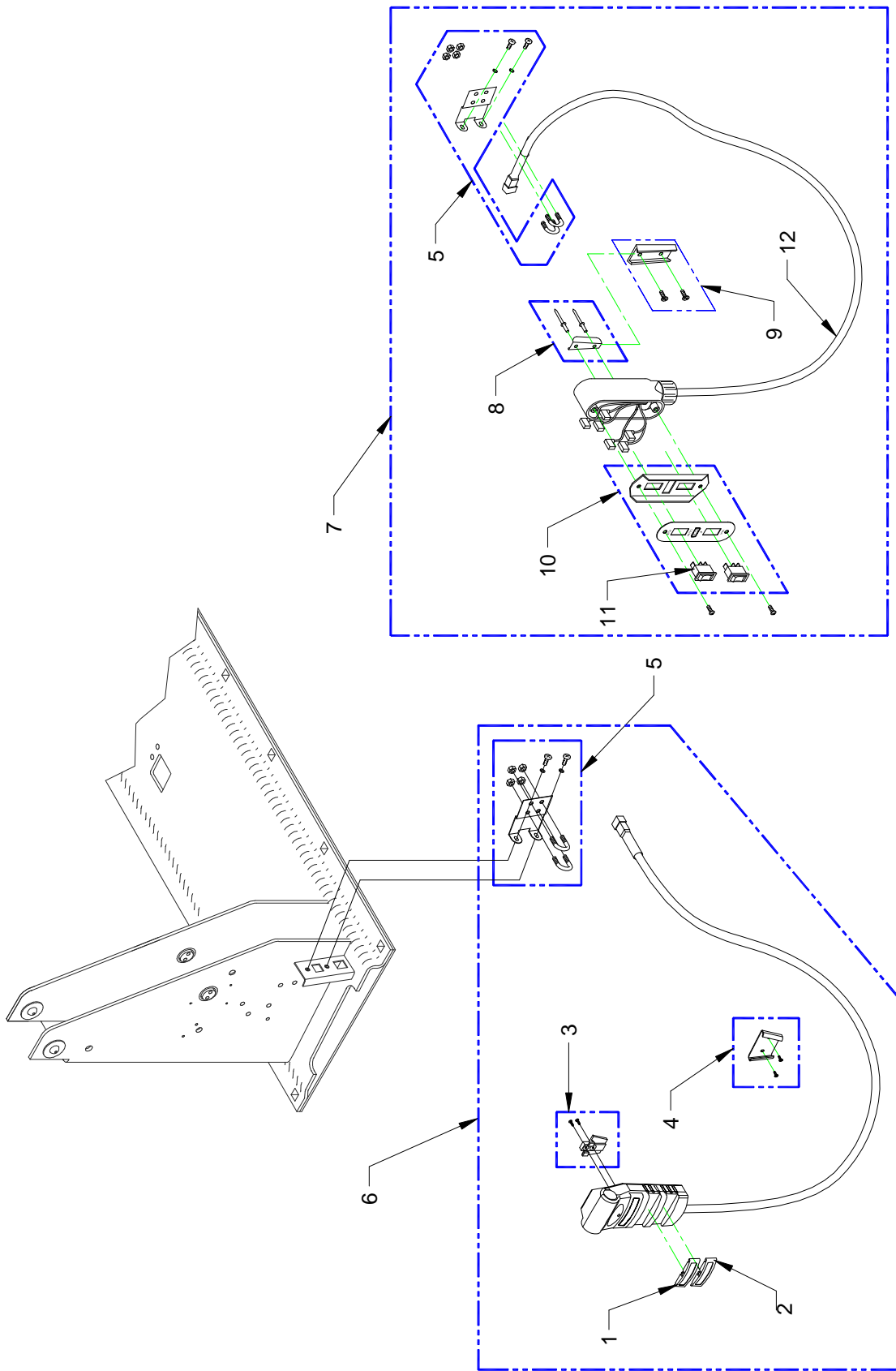


FIGURE 4-5: S-SERIES PENDANT

FIGURE 4-5: S-SERIES PENDANT

REF.	DESCRIPTION	QTY.	PART NO.
1	SPARE PARTS, STOW/DEPLOY BUTTON, S-SERIES	1	14731
2	SPARE PARTS, UP/DOWN BUTTON, S-SERIES	1	14732
3	SPARE PARTS, V-BRACKET, PLASTIC	1	14733
4	KIT, WALL MOUNT BRACKET, UNIVERSAL PENDANT	1	14709
5	KIT, CONTROL HARNESS STRAIN RELIEF, S-SERIES	1	01007
6-1	KIT, PENDANT, S-SERIES, 7 FT	1	14727
6-2	KIT, PENDANT, S-SERIES, COILED CORD	1	14728
6-3	KIT, PENDANT, S-SERIES, 10 FT	1	14729
6-4	KIT, PENDANT, S-SERIES, STEEL JACKETED CORD	1	14730
7	KIT, PENDANT, OLD-STYLE (W/ROCKER SWITCH)	1	01008
8	KIT, CLIP, PENDANT, MALE W/RIVETS	1	28781
9	KIT, INSTL, PENDANT MTG CLIP	1	01118
10	FACEPLATE ASSY, PENDANT, SWITCH GD	1	V2-ES-035
11	SWITCH, SP ROCKER, ON-OFF-ON BLK	2	26455
12	HARNESS REPLACEMENT, 7FT CORD (FOR 01008 ONLY-OLD STYLE PENDANT)	1	V2-ES-024

SOLID PLATFORM
DATE: 05/24/04

S-SERIES SOLID PLATFORM
 SERIAL NO's. 32000 - PRESENT

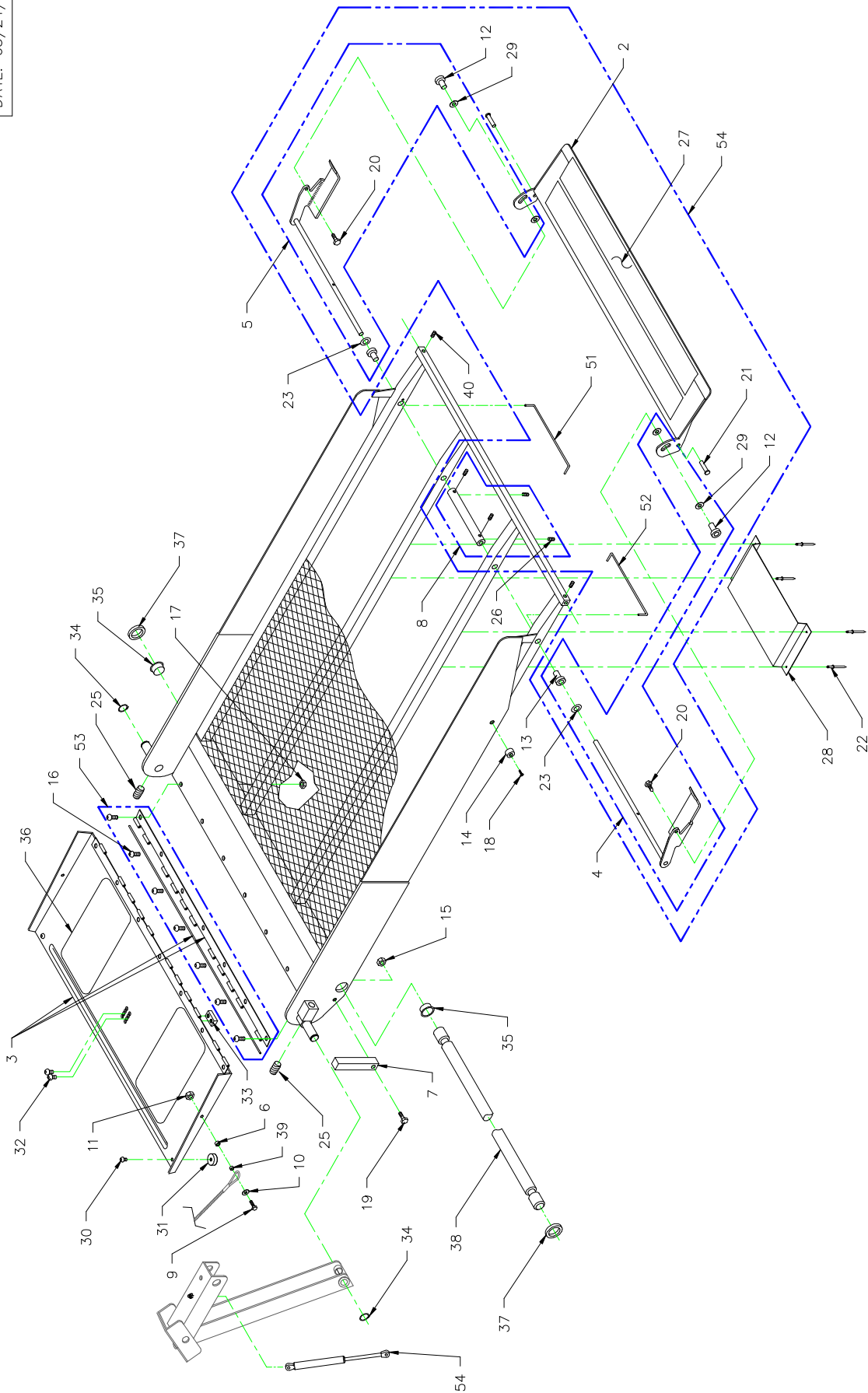


FIGURE 4-6: S-SERIES SOLID PLATFORM

**FIGURE 4-6: S-SERIES SOLID PLATFORM
(ALL MODELS) WHEELCHAIR LIFT
SERIAL NO's. 32000 - PRESENT**

REF.	DESCRIPTION	QTY.	PART NO.
1-1 *	PLATFORM ASSY, 30 X 44, SOLID	1	V2-PF-384
1-2 *	PLATFORM ASSY, 30 X 48, SOLID	1	V2-PF-385
1-3 *	PLATFORM ASSY, 30 X 51, SOLID	1	V2-PF-386
1-4 *	PLATFORM ASSY, 32 X 44, SOLID	1	V2-PF-387
1-5 *	PLATFORM ASSY, 32 X 48, SOLID	1	V2-PF-388
1-6 *	PLATFORM ASSY, 32 X 51, SOLID	1	V2-PF-389
2-1	ROLLSTOP MECH. ASSY, 6", 30" WIDE PLATFORM	1	V2-PF-291
2-2	ROLLSTOP MECH. ASSY, 6", 32" WIDE PLATFORM	1	V2-PF-292
3-1	INNER ROLLSTOP, 30"	1	V2-PF-141
3-2	INNER ROLLSTOP, 32"	1	V2-PF-142
4	KIT, ROLLSTOP ACTUATOR REPLACEMENT, LH	1	22903
5	KIT, ROLLSTOP ACTUATOR REPLACEMENT, RH	1	22902
6	SPACER, BRIDGEPLATE SPRING	2	UV-PF-839
7	BLOCK, PLATFORM LEVEL ADJUSTMENT	1	VT-AH-142
8	KIT, COLLAR, ROLLSTOP ACTUATOR, 6.25"	1	28775
9	SCREW, HEX, 1/4-20 X 7/8", (BAG OF 10)	2	15920
10	WASHER, 1/4"ID, FLAT SAE, (BAG OF 10)	2	17504
11	NUT, HEX, 1/4-20, NYLON INSERT, (BAG OF 10)	2	15919
12	"T" NUT, STAINLESS, (BAG OF 10)	2	14485
13	BUSHING, BRONZE, .39ID	2	V2-BU-195
14	BUMPER, UHMW PLASTIC, 75ID X .38 T	2	V2-AC-027
15	NUT, HEX, 5/16-18, (BAG OF 10)	2	13349
16	SCREW, BUTTON HEAD, 5/16-18 X 3/4", SST, (BAG OF 10)	7	15983
17	NUT, HEX, 5/16-18, NYLON INSERT, SST, (BAG OF 10)	7	14415
18	SCREW, TEK PAN HEAD, 8 X 3/4", (BAG OF 10)	2	15911
19	SCREW, HEX, 5/16-18 X 1, GR5, (BAG OF 10)	2	15953
20	SCREW, HEX, 1/4-20 X 1/2", GR5, SST, (BAG OF 10)	2	13307
21	PIN, OUTER BARRIER, (BAG OF 10)	2	19513
22	RIVET, 1/8 X 3/8", ALUM, (BAG OF 10)	4	14490
23	WASHER, FLAT, .81OD X .41ID, (BAG OF 10)	2	17510
24	DECAL, NO STEP	1	26244
25	SCREW, SOCKET SET, 1/2-20 X 1-1/4", (BAG OF TEN)	2	19704
26	SET SCREW, 1/4-20 X 1/4", CUP POINT (BAG OF 10)	4	13312
27	SAFETREAD, 28.75 X 2.0, YELLOW	1	25660
28	PLATE, ALUMINUM, 5" X 9-3/4"	1	VT-PF-54
29	WASHER, FLAT, NYLON, .32ID X .75OD X .031, (BAG OF 10)	4	14467
30	SCREW, BUTTON HEAD, 1/4-20 X 3/8, SST, (BAG OF 10)	2	13309
31	GUIDE, 1.00 OD X 1/4-20 ID	2	UL-AC-034
32	SCREW, BUTTON HEAD, 5/16-18 X 1/2, SST, (BAG OF 10)	2	14484
33-1	KIT, REPLACEMENT LATCH MECHANISM (S/N 32000-44082)	1	01099
33-2 **	CATCH, BASE LATCH, (44720 - present)	1	V2-AC-103
34	RETAINING RING, .75" EXT, (BAG OF 10)	2	11796
35	BUSHING, 1"ID X 1/2", (BAG OF 10)	2	19579
36	SAFETREAD, 9.50 X 5.50, YELLOW	2	25657
37	SHIM, PVC SPACER	2	V2-BU-091
38-1	SHAFT, MAIN, PLATFORM, 1" X 36.50"	1	VT-PI-43
38-2	SHAFT, MAIN, PLATFORM, 1" X 39.13"	1	VT-PI-49
39	BUSHING, STEEL, .25ID X .32OD X .19L	2	V2-BU-003
40	SET SCREW, 1/4-20 X 1/4", CONE POINT, (BAG OF 10)	2	14492
51	SPRING, TORSION, RH	1	V2-SP-022
52	SPRING, TORSION, LH	1	V2-SP-021
53	KIT, HINGE, W/PIN, CHARCOAL GREY	1	32107
54-1	KIT, REPLACEMENT ASSY, 6" ROLLSTOP, 30" PLATFORM	1	010011
54-2	KIT, REPLACEMENT ASSY, 6" ROLLSTOP, 32" PLATFORM	1	010012

* Fully assembled platform with all items shown except items 37 and 38.

** Must be used with V2-AC-102.

DATE: 06/01/04
 DWG: SSX00006

S-SERIES SPLIT PLATFORM
 SERIAL NO's. 32000-

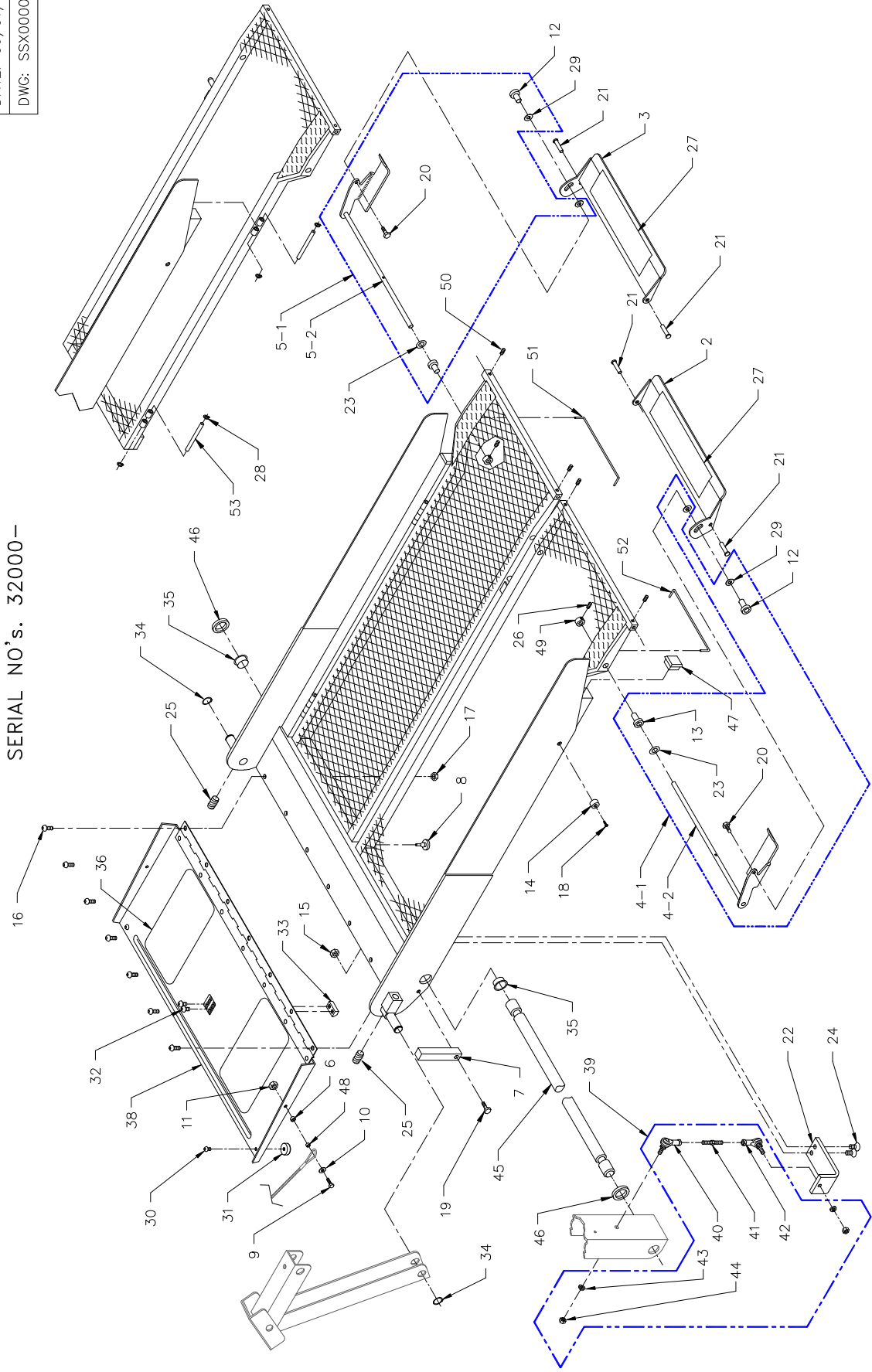


FIGURE 4-7: S-SERIES SPLIT PLATFORM

**FIGURE 4-7: S-SERIES SPLIT PLATFORM
PERSONAL WHEELCHAIR LIFT (SERIAL NO'S. 32000 – PRESENT)**

REF.	DESCRIPTION	QTY.	PART NO.
1 *	PLATFORM ASSY, 30 X 42 SPLIT	1	V2-PF-380
2 *	PLATFORM ASSY, 30 X 48 SPLIT	1	V2-PF-381
3 *	PLATFORM ASSY, 26 X 38 SPLIT, S1100	1	V1-PF-380
4 *	PLATFORM ASSY, 30 X 38 SPLIT, S1100	1	V1-PF-381
2-1	ROLLSTOP ASSY, LH, SPLIT PLATFORM, 30"	1	V2-PF-122
2-2	ROLLSTOP ASSY, LH, SPLIT PLATFORM, 26", S1132	1	V1-PF-122
3-1	ROLLSTOP ASSY, RH, SPLIT PLATFORM, 30"	1	V2-PF-123
3-2	ROLLSTOP ASSY, RH, SPLIT PLATFORM, 26", S1132	1	V1-PF-123
4-1	KIT, REPLACEMENT, ROLLSTOP ACTUATOR, LH, W/HDWR	1	22903
4-2	ROLLSTOP ACTUATOR ASSY, LH, S1132	1	V1-PF-003
5-1	KIT, REPLACEMENT, ROLLSTOP ACTUATOR, RH, W/HDWR	1	22902
5-2	ROLLSTOP ACTUATOR ASSY, RH, S1132	1	V1-PF-002
6	SPACER, ROLLSTOP	2	UV-PF-839
7	BLOCK, PLATFORM LEVEL ADJUSTMENT	2	VT-AH-142
8	BUMPER, RUBBER, (BAG OF 10)	2	20653
9	SCREW, HEX, 1/4-20 X 7/8", (BAG OF 10)	2	15920
10	WASHER, FLAT, .64OD X .28ID X.065, (BAG OF 10)	2	17504
11	NUT, HEX, 1/4-20, NYLON INSERT, (BAG OF 10)	2	15919
12	"T" NUT, SST, (BAG OF 10)	2	14485
13	BUSHING, BRONZE, .39 ID	2	V2-BU-195
14	BUMPER, UHMW PLASTIC, 75 D X .38 T	2	V2-AC-027
15	NUT, HEX, NYLON INSERT, 5/16-18, (BAG OF 10)	2	13349
16	SCREW, BUTTON HEAD, 5/16-18 X 1/2", SST, (BAG OF 10)	7	17506
17	NUT, HEX, 5/16-18, (BAG OF 10)	7	19714
18	SCREW, TEK PAN HEAD, #8 X 3/4", (BAG OF 10)	2	15911
19	SCREW, HEX, 5/16-18x1, GR5	2	15953
20	SCREW, HEX, 1/4-20 x 1/2", GR5, SST, (BAG OF 10)	2	13307
21	PIN, CLEVIS, 5/16 x 1-1/4, (BAG OF TEN)	2	19513
22	BRACKET, ROD END ATTACHMENT	2	V3-PL-46
23	WASHER, FLAT, .81OD X .41ID x .065, (BAG OF 10)	2	17510
24	SCREW, FLAT HEAD, 3/8-16 x 3/4", (BAG OF 10)	4	11792
25	SET SCREW, 1/2-20 X 1-1/4" (ADJUSTING SCREW), (BAG OF 10)	2	19704
26	SET SCREW, 1/4-20 x 1/4", CUP POINT, (BAG OF 10)	2	13312
27	SAFETREAD, 2.75" X 14"	2	V2-AC-41
28	RING, RETAINING, .25"OD, (BAG OF 10)	8	11793
29	WASHER, NYLON, .318 ID X .751 OD X .031, (BAG OF 10)	4	14467
30	BUTTON HEAD SCREW, 1/4-20 X 3/8, SST, (BAG OF 10)	2	13309
31	GUIDE, 1.00 OD X 1/4-20 ID X 0.33	2	UL-AC-034
32	BUTTON HEAD SCREW, 5/16-18 X 1/2, SST, (BAG OF 10)	2	17506
33-1	KIT, REPLACEMENT LATCH MECHANISM	1	01099
33-2	CATCH, BASE LATCH (44720 - present)	1	V2-AC-103
34	RETAINING RING, .75" EXT, (BAG OF 10)	2	11796
35	BUSHING, FLANGED, 1" ID X 1/2W", (BAG OF 10)	2	19579
36	SAFETREAD, 9.75 X 5.50, BLACK	2	25653
38-1	INNER ROLLSTOP, 30" ASSY	1	V2-PF-141
38-1	KIT, INNER ROLLSTOP RETROFIT, W/HDWR	1	01029
38-2	INNER ROLLSTOP, 26" ASSY	1	V1-PF-212
39	ASSEMBLY, TIE ROD	2	VS-AH-08
40	BALL JOINT, RH THREAD	2	VS-AH-03
41	STUD, TIE ROD, LH THREAD TO RH THREAD	2	VS-AH-07
42	BALL JOINT, LH THREAD, SST	2	VS-AH-02
43	WASHER, SPLIT LOCK, 5/16", (BAG OF 10)	4	13384
44	NUT, HEX, 5/16-24, (BAG OF 10)	4	15988
45-1	SHAFT, MAIN, PLATFORM, 1" X 37.25	1	VT-PI-43
45-2	SHAFT, MAIN, PLATFORM, 1" X 33.25	1	VS-PI-14
46	SHIM, PVC SPACER	2	V2-BU-091
47	PLUG, SQUARE, 1 1/8, BLACK PLASTIC	2	10258
48	BUSHING, STEEL, .25ID X .32OD X .19L	2	V2-BU-003
49	COLLAR, .38ID	2	VS-BU-02
50	SET SCREW, 1/4-20 X 1/4, CONE POINT, (BAG OF 10)	4	14492
51	SPRING, TORSION, RH	1	V3-SP-22
52	SPRING, TORSION, LH	1	V3-SP-21
53	PIN, HINGE, SPLIT PLATFORM DOOR (ONLY FOR 30 X 48 SPLIT PLATFORM)	4	VS-PI-01

* Fully assembled platform with all items shown except items 45-1, 45-2, 46.

S-SERIES TRAVELING FRAME
 SERIAL NO's. 32000 - PRESENT

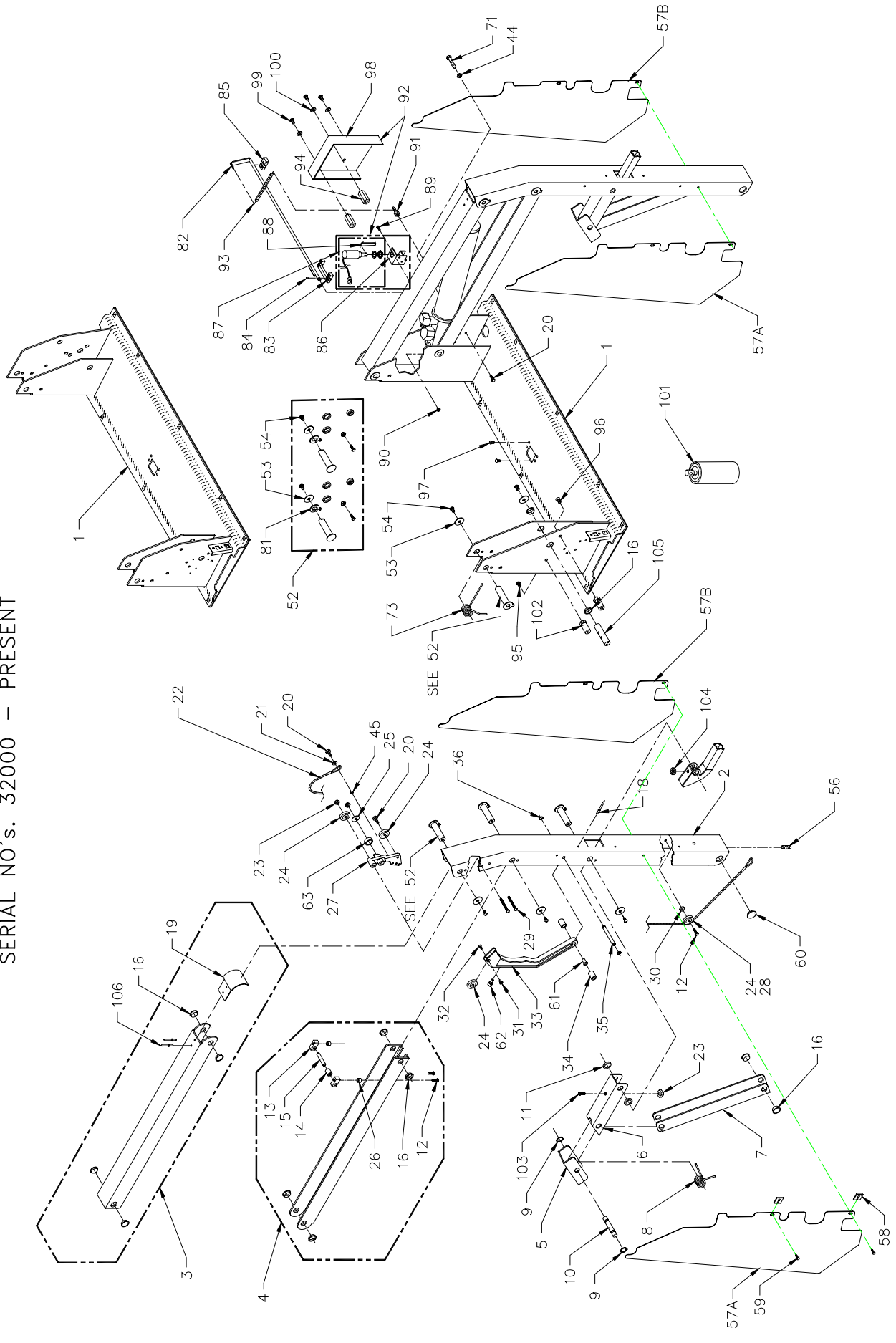


FIGURE 4-8: S-SERIES TRAVELING FRAME

32DSSP02.C

**FIGURE 4-8: S-SERIES TRAVELING FRAME
(ALL MODELS) WHEELCHAIR LIFT
SERIAL NO's. 32000 - PRESENT**

REF.	DESCRIPTION	QTY.	PART NO.
1-1	BASEPLATE ASSY, 26", w/INTERLOCK, S1100	1	14450
1-2	BASEPLATE ASSY, 30", w/o INTERLOCK	1	14452
	BASEPLATE ASSY, 30", w/INTERLOCK	1	14453
	BASEPLATE ASSY, 30", w/o INTERLOCK, RH	1	14452R
	BASEPLATE ASSY, 30", w/INTERLOCK, S1100	1	14451
1-3	BASEPLATE ASSY, 32", w/o INTERLOCK	1	14454
	BASEPLATE ASSY, 32" w/INTERLOCK	1	14455
	BASEPLATE ASSY, 32" ,w/o INTERLOCK, RH	1	14454R
2-1	VERTICAL ARM ASSY, RH, S1200	2	VS-AC-241
	VERTICAL ARM ASSY, LH, S1200	2	VS-AC-242
2-2	VERTICAL ARM ASSY, S2000	2	VT-AC-141
	VERTICAL ARM ASSY, S5000	2	V5-AC-141
2-3	VERTICAL ARM ASSY, RH, S1100, (S/N's 32000-62043)	2	V1-AC-241
	VERTICAL ARM ASSY, LH, S1100, (S/N's 62044 - present)	2	V1-AC-242
3-1	TOP ARM ASSY, S1200	2	VS-AC-250
3-2	TOP ARM ASSY, S2000	2	VT-AC-250
3-3	TOP ARM ASSY, S5000	2	V5-AC-250
4-1	BOTTOM ARM ASSY, S1200	2	VS-AC-252
4-2	BOTTOM ARM ASSY, S2000	2	VT-AC-252
4-3	BOTTOM ARM ASSY, S5000	2	V5-AC-252
5	SADDLE ASSEMBLY	2	VT-AC-046
6	LINK KNUCKLE LEVER ASSY	2	VT-AC-070
7-1	LINK, VERTICAL KNUCKLE ASSY, S1200, W/LOAD SENSOR	1	VS-AC-058
7-2	LINK, VERTICAL KNUCKLE ASSY, S2000, W/LOAD SENSOR	1	VT-AC-058
7-3	LINK, VERTICAL KNUCKLE ASSY, S5000, W/LOAD SENSOR	1	V5-AC-058
7-4	LINK, VERTICAL KNUCKLE ASSY, S1100, W/LOAD SENSOR, SOLID PLATFORM	1	V1-AC-058
7-5	LINK, VERTICAL KNUCKLE ASSY, S1100, W/LOAD SENSOR, SPLIT PLATFORM	1	V1-AC-158
7-6	LINK, VERTICAL KNUCKLE ASSY, S1200, W/O LOAD SENSOR	2**	VS-AC-069
7-7	LINK, VERTICAL KNUCKLE ASSY, S2000, W/O LOAD SENSOR	2**	VT-AC-069
7-8	LINK, VERTICAL KNUCKLE ASSY, S5000, W/O LOAD SENSOR	2**	V5-AC-069
7-9	LINK, VERTICAL KNUCKLE ASSY, S1100, W/O LOAD SENSOR, SOLID PLATFORM	2**	V1-AC-069
7-10	LINK, VERTICAL KNUCKLE ASSY, S1100, W/O LOAD SENSOR, SOLID PLATFORM	2**	V1-AC-071
8-1	SPRING, KNUCKLE ACTUATOR (S/N's 31999 AND BELOW)	2	VT-SP-45
8-2	SPRING, KUNCKLE ACTUATOR (S/N's 32000 - present)	2	VT-SP-42
9	RETAINING RING, .75" EXT, BAG OF 10	1	11796
10	PIN, SNAP RING, 0.75 OD X 2.15L	2	VT-PI-41
11	SPACER, KNUCKLE LINK	4	VT-BU-42
12	SCREW, BUTTON HD 1/4-20 X 1", SST, BAG OF 10	1	19715
13	RETAINER, CAM ROLLER	4	V2-AC-025
14-1	ROLLER, IRS CAM (S2000 & S5000)	2	V2-AC-124
14-2	ROLLER, IRS CAM (S1000 & S1200)	2	V2-AC-024
15	PIN, CAM ROLLER	2	V2-PI-094
16	FLANGED BUSHING, .75ID, BAG OF 10	3	19576
18	RIVET, BLIND, 3/16 X 1/2", ALUM, BAG OF 10	1	15918
19	CAP, UPPER PARALLEL ARM	2	V2-AC-89
20-1	SCREW, HEX HEAD, 1/4-20 x 3/4, GR5, BAG OF 10	4	13308
20-2	SCREW, FLAT HEAD, 1/4-20 x 1/2, BAG OF 10	1	15928
21	WASHER, FLAT, .63OD x .28ID x .065, BAG OF 10	2	17504
22-1	CABLE ASSY, REPLACEMENT, IRS, S1200, 49.50"	2	16093
22-2	CABLE ASSY, REPLACEMENT, IRS, S2000, 52.50"	2	16094
22-3	CABLE ASSY, REPLACEMENT, IRS, S5000, 55.50"	2	16095
22-4	CABLE ASSY, REPLACEMENT, IRS, S1100, 45.00"	2	13661
23	NUT, HEX, 1/4-20, NYLON INSERT, BAG OF 10	2	15919
24	BEARING, GROOVED	8	VS-AH-06
25	WASHER, FENDER, 1.00OD x .28ID x .065, BAG OF 10	2	25623
26	STAND-OFF, .38 LG, 1/4" ID X 1/2" OD	4	V2-AC-011
27	BLOCK, PULLEY MOUNT, IRS	2	V2-AC-112
28	BEARING, GROOVED, 1" OD, .25 ID, S1100 only, (S/N's 62044 - present)	2	25374

* Item 7 is used on serial no.'s 103,999 and below.

** Item quantity is one each for s/n's 103,999 and below and quantity is two each for s/n's 104,000 and above.

REF.	DESCRIPTION	QTY.	PART NO.
29	SCREW, BUTTON HEAD, 1/4-20 x 2 1/4, SST, BLK OXIDE, BAG OF 10	1	19720
30	BUSHING, 5/8 OD X 3/16L	2	VS-AH-13
31	T-NUT, FLAT HEAD, 10-24 X .25 OD X .44L	2	V2-AC-015
32	SCREW, FLAT HEAD, 10-24 x 1/2, BAG OF 10	1	13303
33	CAM, ASSY, IRS ACTUATOR	2	V2-AC-190
34	KIT, SPACER, RUBBER, INNER ROLLSTOP CAM	4	01224
35	PIN, SNAP RING, .38OD X 3.09 L	2	VS-PI-09
36	RETAINING RING, .38ID, BAG OF 10	1	11795
45	BUSHING, STEEL, 251D X 320D X .19L	2	V2-BU-003
52	KIT, RETROFIT, PIN, LINK, ARM ASSY	3	16679
53	WASHER, FENDER, 5/16, SST, BAG OF 10	1	15921
54	SCREW, BUTTON HEAD, 5/16-18 X 1/2 SST, BAG OF 10	1	14494
56	SETSCREW, HSS, 3/8-16 x 3/8, CUP PT, BAG OF 10	1	11797
57A	KIT, PINCH POINT SHIELD W/HDW, S1100'S	2	29168
57A	KIT, PINCH POINT SHIELD W/HDWR, S1200'S	2	29162
57B	KIT, PINCH POINT SHIELD W/HDWR, S1100'S	2	29177
57B	KIT, PINCH POINT SHIELD W/HDWR, S1200'S	2	29178
58	SPRING NUT, 10-24, U-TYPE, BAG OF 10	1	11799
59	SCREW, PAN HEAD, 10-24 x 1/2, BAG OF 10	1	13304
60	PLUG, 1" LOW PROFILE, BLK NYLON (S/N's 52246 - present)	2	25563
61	BEARING, NYLINER, 3/8 IDX11/16 LONG (S/N's 56000 - present)	2	25562
62	BUMPER, BUTTON, IRS CAM, BAG OF 10	1	19783
63	BUMPER, IRS CAM, ANTI-RATTLE (S/N's 56000 - present)	2	V2-BU-090
71	SCREW, HEX HEAD, 1/4-20 X 1-3/4, GR5 (BAG OF 10)	1	25696
73	SPRING, UPPER PARALLEL ARM	2	V2-SP-97
80	SETSCREW, 5/16-18 x 1, CUP PT, BAG OF 10	1	15830
81	WASHER, KEYED, PAINTED	2	20258
82-1	KIT, LATCH RELEASE, 30", w/BLOCKS & HDWR	1	28768
82-2	KIT, LATCH RELEASE, 26", w/BLOCKS & HDWR	1	28767
83-1	BLOCK, MOUNTING, BASE LATCH, (S/N's 32000 - 44719)	2	V2-AC-001
83-2	BLOCK, CENTER MOUNTING, BASE LATCH (S/N's 44720 - present)	1	V2-AC-102
84	DOWEL PIN, .094 DIA X .38 L, BAG OF 10	1	25615
85	BLOCK, MOUNTING, BASE LATCH	1	V2-AC-001
86	BRACKET, STOW LOCK SOLENOID (S/N's 50517 - present)	1	V2-AC-108
87-1	SOLENOID, ASSY, S-SERIES, 12V (S/N's 50517 - present)	1	V2-ES-127
87-2	SOLENOID, ASSY, S-SERIES, 24V (S/N's 50517 - present)	1	V2-ES-128
88	CLIP, SPRING, BASE LATCH	1	V2-AC-009
89	SCREW, FLAT HEAD, 10-24 x 1/2, SST, BAG OF 10	1	14426
90	NUT, HEX, NYLON INSERT, 10-24, BAG OF 10	1	13382
91	PIN, SPRING MOUNTING	1	V2-PI-095
92-1	KIT, REPLACEMENT SOLENOID, 12V (S/N's 32000 - 50516)	1	01238
92-2	KIT, REPLACEMENT SOLENOID, 24V (S/N's 32000-50516)	1	01239
93	SPRING, DOOR HELPER, .38OD X 3.5"	1	V2-SP-093
94	BUSHING, LATCH COVER	2	V2-BU-080
95	SCREW, HEX, 5/16-18 X 3/4", BAG OF 10	1	15901
96	SCREW, FLAT HEAD, 5/16-18 X 3/4, BAG OF 10	1	14499
97	SCREW, BUTTON HEAD, 1/4-20 X 1/2", SST, BAG OF 10	1	15902
98	COVER, BASE LATCH (S/N's 50517 - present)	1	V2-CV-123
99	SCREW, HEX HEAD, 5/16-18 X .625, BAG OF 10	1	14495
100	WASHER, FLAT, .69OD x .34ID x .065, BAG OF 10	1	13350
101	SPRAY PAINT, TOUCH-UP, CHARCOAL	1	25340
102	BUSHING, E-COVER MOUNT	2	V2-BU-081
103	SCREW, HEX HEAD, 1/4-20 X 1, GR5, BAG OF 10	1	14493
104	GROMMET, .30ID x .88OD x .44, BAG OF 10	1	23391
105-1	PIN, CONTROL CAM, (S/N's 62560 - present)	1	V2-PI-091
105-2	KIT, CONTROL CAM, RETROFIT	1	01287
106	RIVET, BLIND, 3/16 X 5/8, STEEL	4	14-30-410

S-1200 HANDRAIL
SERIAL NO's. 32000 - PRESENT

PERSONAL
DATE: 05/17/04

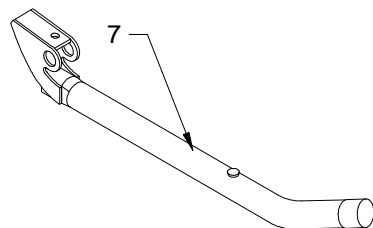
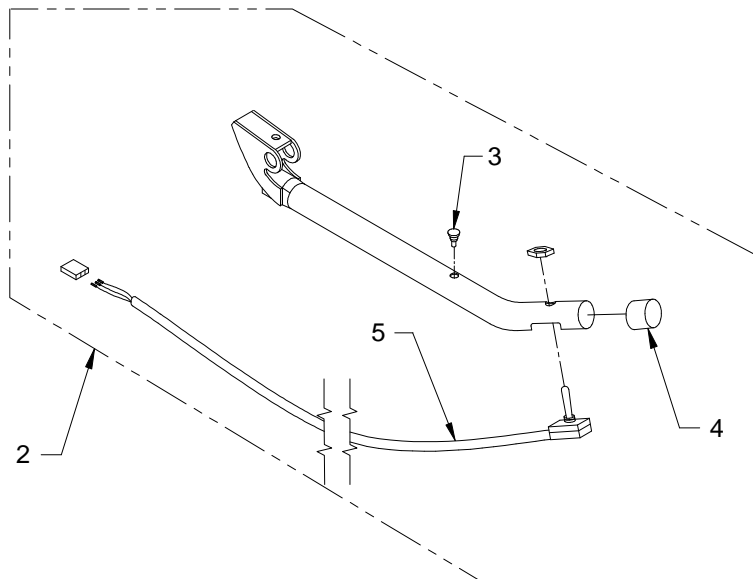
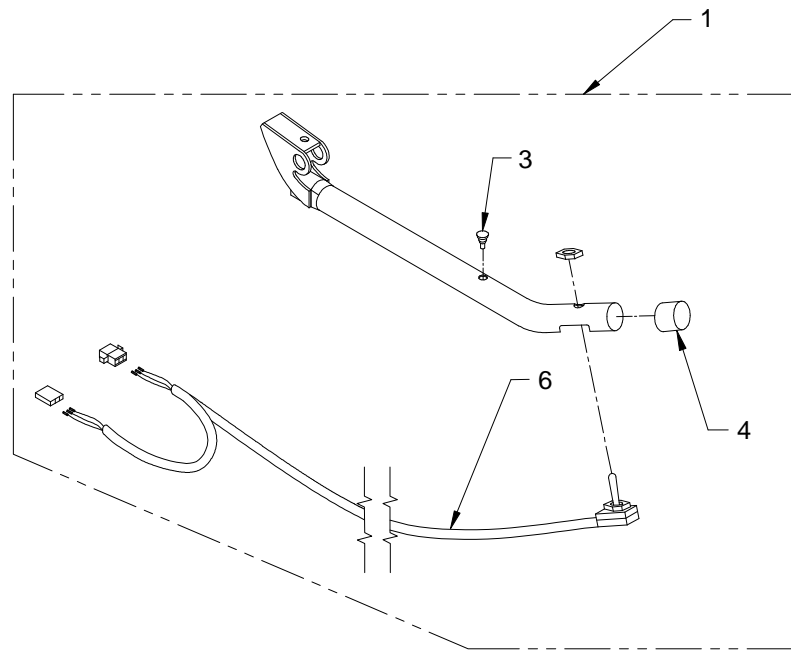


FIGURE 4-9: S-1200 HANDRAIL
SERIAL NO'S. 32000 - PRESENT

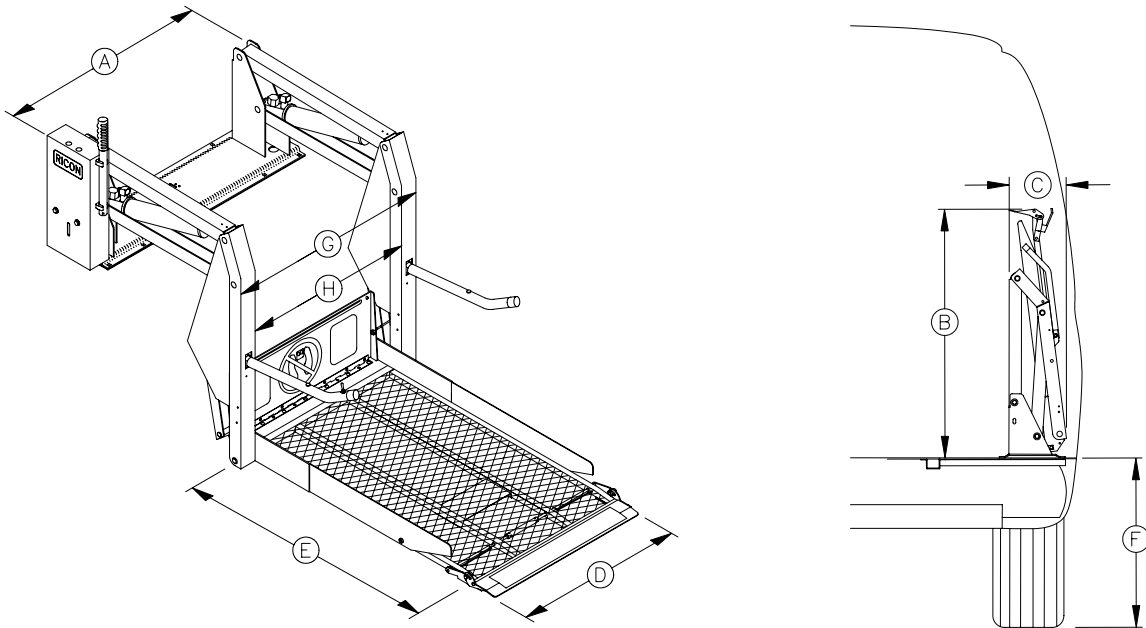
**FIGURE 4-9: S-1200 HANDRAIL
SERIAL NO's. 32000 - PRESENT**

REF.	DESCRIPTION	QTY.	PART NO.
1	HANDRAIL ASSY, S1200, W/SWITCH, RIGHT	1	VS-AC-161
2	HANDRAIL ASSY, W/SWITCH, S1200, LEFT	1	VS-AC-160
3	BUMPER, RUBBER, BAG OF 10	2	20653
4	CAP, ROUND BLACK (S/N's 49648 - present)	2	25550
5	HARNESS, HANDRAIL SWITCH	1	V2-ES-012
6	HARNESS, RIGHT HANDRAIL SWITCH	1	V2-ES-013
7	HANDRAIL ASSY, W/O SWITCH	1	VS-AC-159

**APPENDIX 1
LIFT SPECIFICATIONS - SOLID AND SPLIT PLATFORMS**

S-SERIES PERSONAL USE WHEELCHAIR LIFT with SOLID PLATFORM

Power..... electro-hydraulic	Rated load capacity..... 800 lbs
Motor rating @ 12 volts DC..... 65.0 amp. avg/cycle, 1250 psi	Manual backup (up) hand pump
@ 24 volts DC..... 32.5 amp. avg/cycle, 1250 psi	Manual backup (down)..... pressure release valve
Hydraulic cylinders..... 2 ea, 1.5", power-up/gravity-down	Lift weight..... 310 - 325 lbs

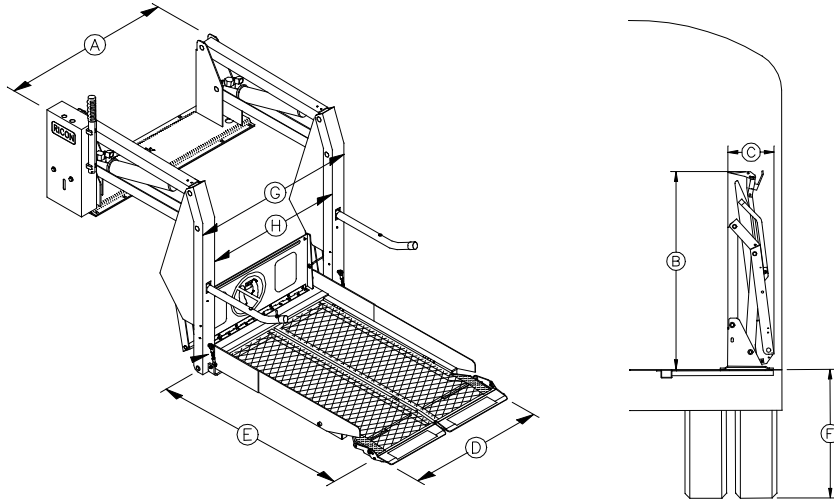


DIMENSIONS (inches)

	A	B	C	D	E	F	G	H
MODEL	Stationary frame width	Height (folded)	Installation depth (folded)	Usable platform width	Usable platform length	Floor-to-ground travel	Traveling frame width	Clear entry width
S1100-P	47	40.5	14	30	44	27	37.5	31
S1101-P	47	40.5	14	30	38	27	37.5	31
S1200-P	47	46.5	14	30	44	31	37.5	31
S1203-P	47	46.5	14	30	51	31	37.5	31
S1204-P	49	46.5	14	32	44	31	39.5	33
S1205-P	49	46.5	14	32	51	31	39.5	33
S1207-P	47	46.5	14	30	48	31	37.5	31
S1208-P	49	46.5	14	32	48	31	39.5	33

S-SERIES PERSONAL USE WHEELCHAIR LIFT with SPLIT PLATFORM

Power electro-hydraulic Motor rating @ 12 volts DC65.0 amp. avg/cycle, 1250 psi @ 24 volts DC32.5 amp. avg/cycle, 1250 psi Hydraulic cylinders..... 2 ea, 1.5", power-up/gravity-down	Rated load capacity800 lbs Manual backup (up)hand pump Manual backup (down) pressure release valve Lift weight300 - 325 lbs
--	--



DIMENSIONS (inches)

	A	B	C	D	E	F	G	H
MODEL	Stationary frame width	Height (folded)	Installation depth (folded)	Usable platform width	Usable platform length	Floor-to-ground travel	Traveling frame width	Clear entry width
S1132-P	41	40.5	19.5	26	38	27	33.5	27
S1133-P	45	40.5	21.5	30	38	27	37.5	31
S1230-P	45	46.5	21.5	30	48	31	37.5	31
S1231-P	45	44.5	21.5	30	42	31	37.5	31

