



INNOVATION IN MOBILITY™

R1208
Six-Way Power Seat Base

PRINT

Service Manual

This Ricon service manual is for use by qualified service technicians, and is not intended for use by non-professionals (do-it-yourselfers). The manual provides essential instructions and reference information, which supports qualified technicians in the correct installation and maintenance of Ricon products.

Qualified service technicians have the training and knowledge to perform maintenance work properly and safely. For the location of a Ricon authorized service technician in your area, call Ricon Product Support at 1-800-322-2884.

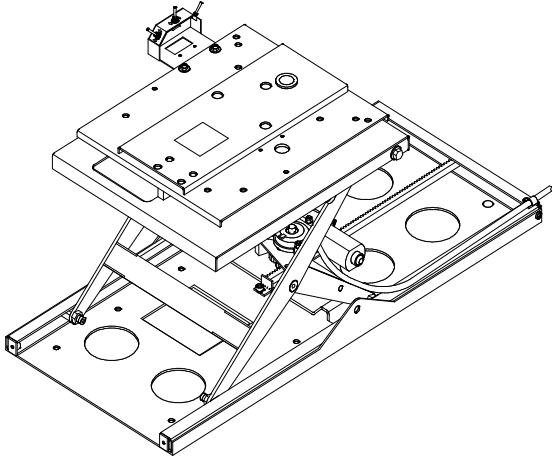
Customer Name: _____
Installing Dealer: _____
Date Installed: _____
Serial Number: _____

TABLE OF CONTENTS

<i>Chapter:</i>	<i>Page</i>
I. INTRODUCTION	1-1
A. RICON ONE-YEAR LIMITED WARRANTY	1-1
B. SHIPMENT INFORMATION.....	1-3
C. GENERAL SAFETY PRECAUTIONS	1-3
D. PRODUCT TERMINOLOGY	1-4
II. INSTALLATION INSTRUCTIONS	2-1
A. LEFT-SWIVEL CONVERSION.....	2-1
B. MECHANICAL INSTALLATION	2-2
1. VEHICLE PREPARATION	2-2
2. ATTACH FACTORY SEAT AND BASE TO POWER SEAT BASE	2-2
3. POWER SEAT BASE POSITIONING AND INSTALLATION	2-3
4. REINSTALL FACTORY SEAT BELT AND SHOULDER HARNESS.....	2-6
5. ADJUST SEAT FOR FACE FORWARD POSITION.....	2-6
C. ELECTRICAL INSTALLATION.....	2-7
D. VERIFY INSTALLATION.....	2-7
E. CUSTOMER ORIENTATION	2-7
III. MAINTENANCE AND TROUBLESHOOTING	3-1
A. MAINTENANCE SCHEDULE.....	3-1
B. TROUBLESHOOTING GUIDE.....	3-1
IV. PARTS DIAGRAMS AND LISTS	4-1
POWER SEAT BASE SPECIFICATIONS	4-9

I. INTRODUCTION

The RICON R1208 Six-Way Power Seat Base helps transfer a person from a wheelchair to a vehicle seat. The Power Seat Base provides 13.5" (34.3 centimeters) of front-to-rear travel, 9" (22.9 centimeters) of height travel, 90E of right and 82E of left-swivel from the straight ahead position to the transfer position. The Power Seat Base adapts to the factory seat and swivels off-center to provide maximum clearance between the driver's seat back and the vehicle wall. It incorporates a scissor-arm mechanism for elevation and has a lifting capacity of 300 pounds (136 kilograms).



Because of the selectable design, the Power Seat Base can be installed at either a driver or passenger seat position. By using the fingertip control toggle switches, the user swivels the Power Seat Base inboard and then raises it to the transfer position. After the user has transferred to the Power Seat Base, it is swiveled to the straight-ahead position, lowered, and moved to the forward-most position.

This manual contains installation, service and maintenance instructions for the Power Seat Base. The installation instructions must be followed exactly, no steps should be eliminated nor should the product be modified. It is important to user safety that the installation is thorough and correct. It is equally important that the Ricon sales/service staff be completely familiar with the Operating Instructions section of the Operator manual to demonstrate and explain the proper use of the product to the user. Once the Power Seat Base is installed, it is very important that it be properly maintained by following the Ricon recommended cleaning, lubrication, and inspection instructions.

If there are questions about this manual, or additional copies are needed, please contact Ricon Product Support at one of the following locations:

Ricon Corporation

7900 Nelson Road

Panorama City, CA 91402 (818) 267-3000

Outside (818) Area Code (800) 322-2884

World Wide Website www.riconcorp.com

Ricon U.K. Ltd.

Littlemoss Business Park, Littlemoss Road

Droylsden, Manchester

United Kingdom, M43 7EF (+44) 161 301 6000

A. RICON ONE-YEAR LIMITED WARRANTY (refer to following page)

RICON CORPORATION ONE-YEAR LIMITED WARRANTY

Ricon Corporation (Ricon) warrants to original purchaser of this product that Ricon will repair or replace, at its option, any parts that fail by reason of defective material or workmanship as follows:

- Repair or replace parts for a period of one year from date of purchase. A complete list of parts covered by this warranty can be obtained from an authorized Ricon dealer.

If You Need to Return a Product: Return this Ricon product to your installing dealer. Please give as much advance notice as possible and allow a reasonable amount of time for repairs.

If You are Traveling: All authorized Ricon dealers honor this warranty. Consult telephone directory or call our Product Support Department for the name of nearest Ricon dealer.

This Warranty does not Cover:

- C Labor or service charges (these may be covered separately by the installing dealer).
- C Malfunction or damage to product parts caused by accident, misuse, lack of proper maintenance, neglect, improper adjustment, modification, alteration, the mechanical condition of vehicle, road hazards, overloading, failure to follow operating instructions, or acts of Nature (i.e., weather, lightning, flood).

Note: Ricon recommends that this product be inspected by an authorized Ricon service technician at least once every six months, or sooner if necessary. Any required maintenance should be performed at that time.

This Warranty is Void if:



WARNING!

THIS PRODUCT HAS BEEN DESIGNED AND MANUFACTURED TO EXACT SPECIFICATIONS. MODIFICATION OF THIS PRODUCT IN ANY RESPECT CAN BE DANGEROUS

- Product has been installed or maintained by someone other than an authorized Ricon service technician.
- Product has been modified or altered in any respect from its original design without written authorization by Ricon.

Ricon disclaims liability for any personal injury or property damage that results from operation of a Ricon product that has been modified from the original Ricon design. No person or company is authorized to change the design of this Ricon product without written authorization by Ricon.

Ricon's obligation under this warranty is exclusively limited to the repair or exchange of parts that fail within the applicable warranty period.

Ricon assumes no responsibility for expenses or damages, including incidental or consequential damages. Some states do not allow the exclusion or limitation of incidental or consequential damages, so the above limitation or exclusion may not apply.

Important: The warranty registration card must be completed and returned to Ricon within 20 days after installation of this Ricon product for the warranty to be valid. The warranty is not transferable.

The warranty gives specific legal rights, and there may be other rights that vary from state to state.

B. SHIPMENT INFORMATION

Ricon does not sell directly to the user because of the specialized nature of the product. Instead, the product is distributed through the worldwide network of authorized Ricon service technicians, who perform the actual sale and installation.

- When the product is received, check the **Shock Indicator** on shipping box, unpack the product and check for freight damage. Claims for any damage should be made to the freight carrier immediately.
- Be sure the installation kit contains all items listed on the kit packing list. Please report any missing items immediately to the Ricon Product Support Department. The warranty and owner's registration cards must be completed and returned to Ricon within 20 days for the warranty to be valid.

NOTE: The Sales or Service Personnel must review the Warranty and this Operator Manual with the user to be certain that they understand the safe operation of the product. Instruct the user to follow the operating instructions without exception.

C. GENERAL SAFETY PRECAUTIONS

The following general safety precautions must be followed during installation, operation, service and maintenance:

- Under no circumstances should installation, maintenance, repair, and adjustments be attempted without the immediate presence of a person capable of rendering aid.
- An injury, no matter how slight, should always be attended. Always administer first aid or seek medical attention immediately.
- Protective eyeshields and appropriate clothing should be worn at all times.
- To avoid injury, always exercise caution when operating and be certain that hands, feet, legs, and clothing are not in the path of product movement.
- Batteries contain acid that can burn. If acid comes in contact with skin, flush affected area with water and wash with soap immediately.
- Always work in a properly ventilated area. Do not smoke or use an open flame near a battery.
- Do not lay anything on top of a battery.
- Check under vehicle before drilling so as not to drill into frame, subframe members, wiring, hydraulic lines, fuel lines, fuel tank, etc.
- Read and thoroughly understand the operating instructions before attempting to operate.
- Inspect the product before each use. If an unsafe condition, unusual noises or movements exist, do not use it until the problem is corrected.
- Keep others clear during operation.
- The product requires regular periodic maintenance. A thorough inspection is recommended at least once every six months. The product must always be maintained at the highest level of performance.

D. PRODUCT TERMINOLOGY

Component references used throughout this manual are illustrated in **Figure 1-1** and defined in **Table 1-1**. Refer to **Chapter IV** for more details.

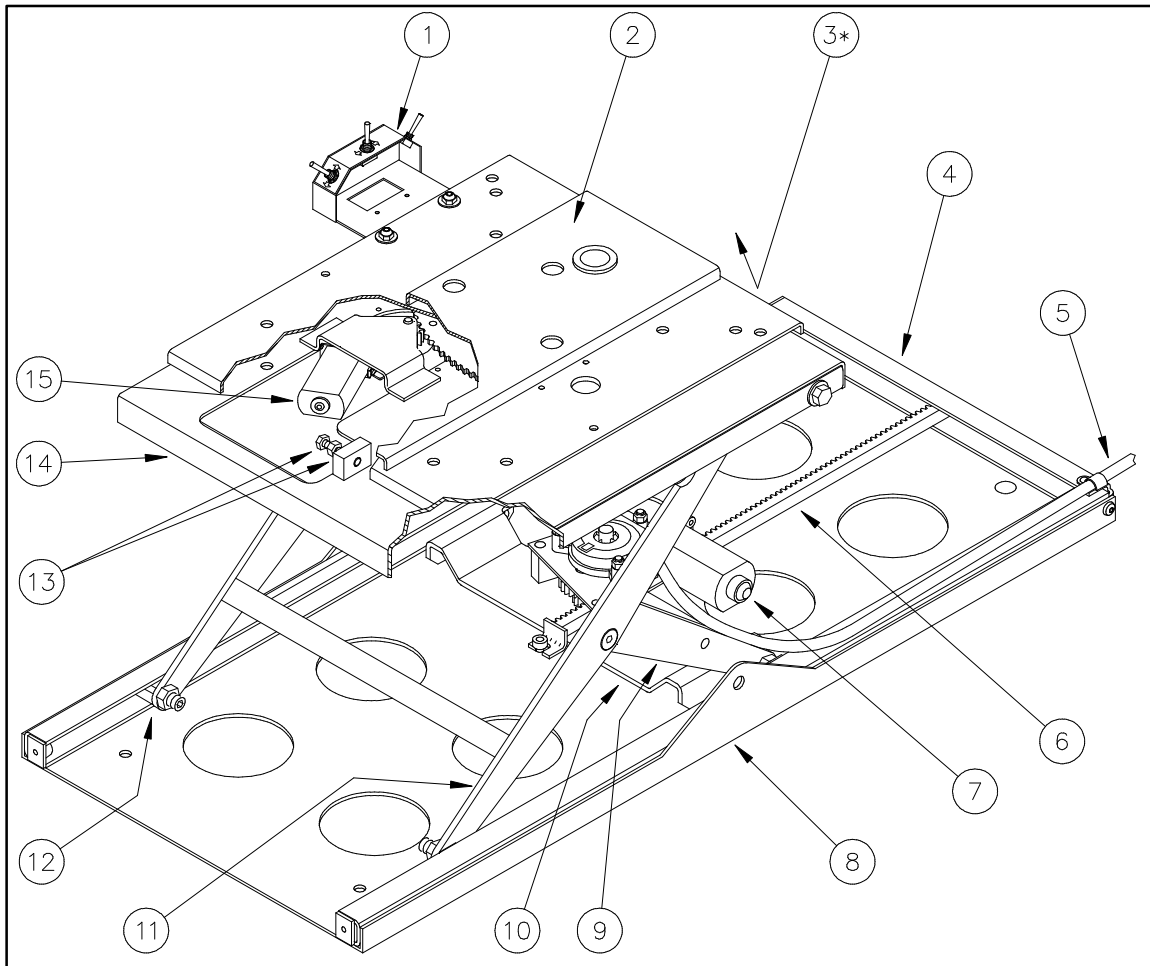


FIGURE 1-1: R1208 SIX-WAY POWER SEAT BASE

TABLE 1-1: POWER SEAT BASE TERMINOLOGY	
REF.	DESCRIPTION
1	Control box assembly (contains function control toggle switches)
2	Swivel plate
3 *	Scissor actuator assembly (up & down motor assembly)
4	Rear frame channel
5	Power seat base harness (electrical)
6	Rack gear assembly
7	Horizontal motor (forward & reverse)
8	Base frame
9	Inner scissor assembly
10	Horizontal drive plate
11	Outer scissor assembly
12	Slide bearing
13	Swivel adjustment atop (with bolt & locknut)
14	Upper frame assembly
15	Swivel motor
* Item not shown.	
END OF TABLE	

II. INSTALLATION INSTRUCTIONS

This chapter provides instructions for installing the RICON R1208 Six-Way Power Seat Base into most vans, custom installations are also possible into other types of vehicles. The Power Seat Base can be installed in any seat position of a vehicle. However, the information and illustrations of this chapter describe the installation into a left-hand drive vehicle driver's seat. If a question arises that is not covered in this chapter, contact Ricon Product Support for assistance.

A. LEFT-SWIVEL CONVERSION

The Power Seat Base has a selectable swivel direction. Each unit is shipped to swivel to the right, the transfer position for installation on the left side of a vehicle. If the Power Seat Base is to be installed on the right side of a vehicle, the direction-of-swivel must be changed from right to left. To convert the Power Seat Base to swivel to the left (for use on the right-side of the vehicle), follow this procedure.

1. Temporarily connect 12VDC power source to the Power Seat Base, battery positive terminal to Harness RED wire and battery negative terminal to GREEN wire.
2. At Control Box Assembly, use "Swivel In/Out" toggle switch to rotate Swivel Plate OUT 2 - 3E.
3. Disconnect power source from Power Seat Base.
4. Refer to **Figure 2-1**. At underside of Swivel Plate, remove and reposition Swivel Adjustment Stop, Rear Stop Plate, and Swivel Adjustment Stop Bolt and Nut as shown.

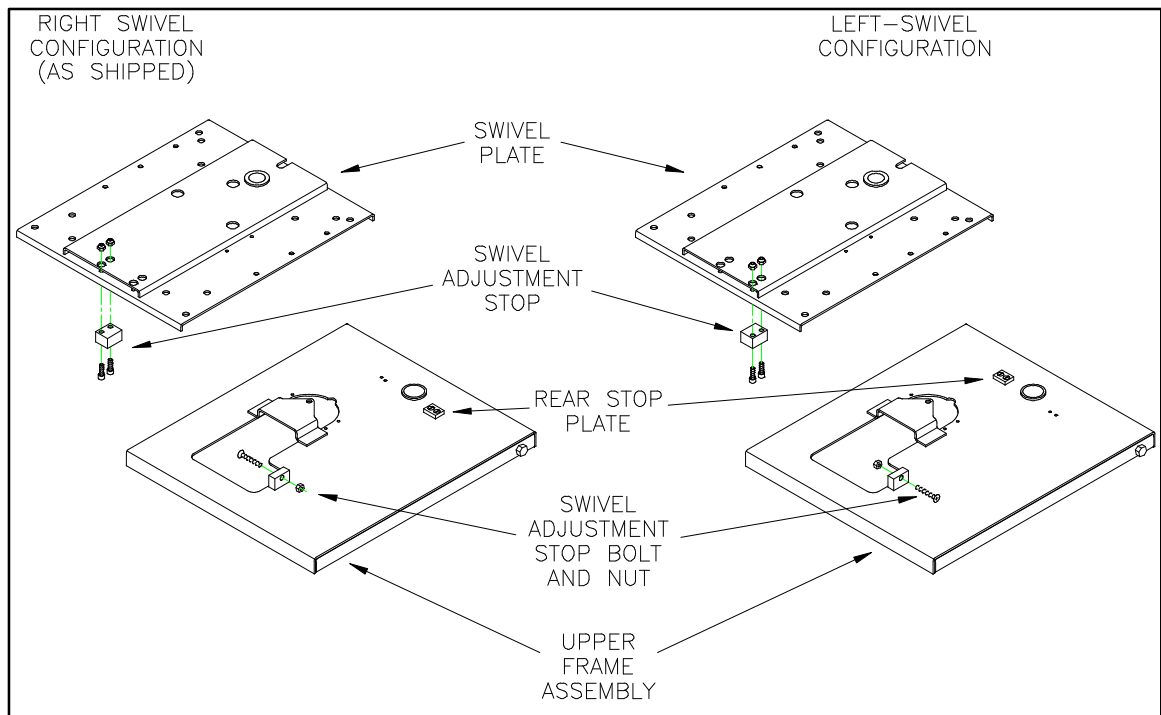


FIGURE 2-1: SWIVEL PLATE CONVERSION

5. Temporarily reconnect 12VDC power source to Power Seat Base (positive to RED and negative to GREEN) and ensure that Swivel Plate stops face-forward when rotated IN. (To adjust face-forward position, use "Swivel In/Out" toggle switch to rotate Swivel Plate OUT 2 - 3E, loosen Swivel Adjustment Stop Bolt as needed, tighten locknut, and rotate Swivel Plate IN.)
6. Disconnect power source from Power Seat Base.
7. At underside of Swivel Plate, remove and retain bolts anchoring Control Box Assembly. Relocate wiring harness and install Control Box Assembly on right side of Power Seat Base.

B. MECHANICAL INSTALLATION

To install the Power Seat Base, refer to the following sections and perform the procedures carefully and in the order that they are presented. Be certain that the installation instructions are followed exactly and do not eliminate any steps or modify the product. If any questions arise that are not covered in this section, contact Ricon for assistance.

1. VEHICLE PREPARATION

To prepare the vehicle for installation of the Power Seat Base, perform this procedure:

- a. Safely park vehicle on a flat, level surface and turn engine off.
- b. Disconnect seat belt wiring. Remove and retain seat belt (shoulder harness if necessary) and mounting hardware.
- c. Remove and retain locknuts that attach seat to factory base. Remove seat from vehicle.
- d. Remove and retain locknuts and/or bolts that attach factory seat base to vehicle floor. Remove factory seat base from vehicle.
- e. Clear vehicle floor of all loose material, high-plush carpet strands, etc. which may interfere with installation and/or operation of the Power Seat Base.

2. ATTACH FACTORY SEAT AND BASE TO POWER SEAT BASE

To attach the factory seat and base to the Power Seat Base, follow this procedure:

- a. Position factory seat base onto Power Seat Base Swivel Plate. Factory seat base must be centered on Swivel Plate with equal front and rear overhang. Use factory hardware to attach seat base to Swivel Plate.
- b. Refer to **Figures 2-2** and **2-3**. Position factory seat onto factory seat base. Rear-edge of seat must be **EVEN** with rear-edge of Swivel Plate. Use factory hardware to attach seat to factory seat base.

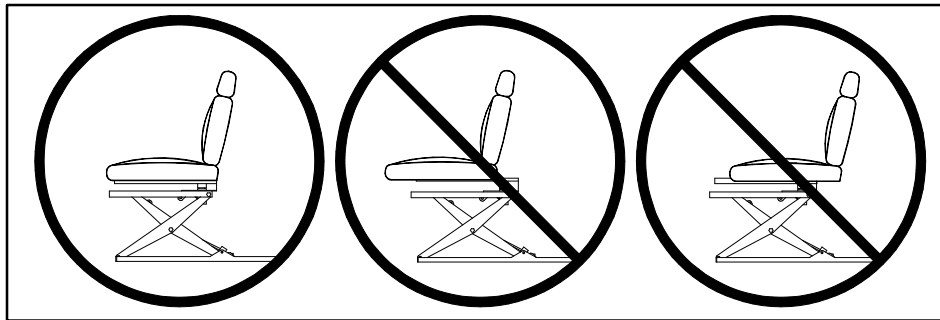


FIGURE 2-2: PROPER SEAT ATTACHMENT POSITION

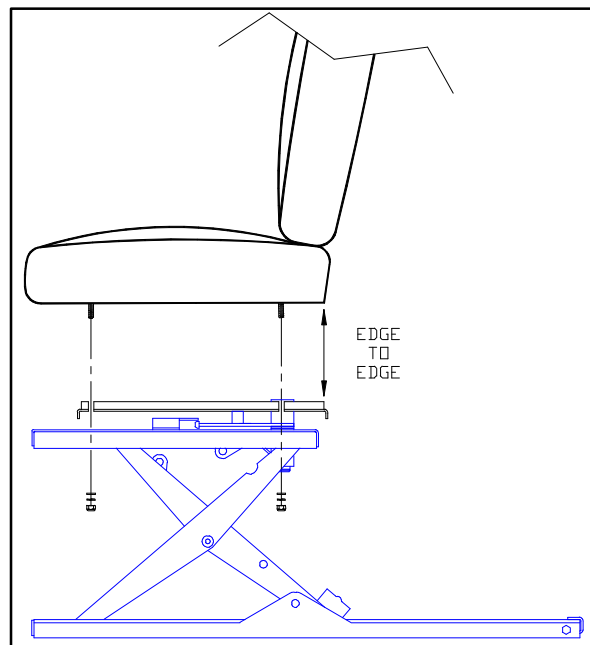


FIGURE 2-3: SEAT ATTACHMENT

3. POWER SEAT BASE POSITIONING AND INSTALLATION

To position and install the Power Seat Base, follow this procedure:

- a. At Power Seat Base Frame, remove and retain six mounting bolts.
- b. Refer to **Figure 2-4**. Position Power Seat Base at mid-position of factory seat base location (centered on steering wheel and square/parallel to vehicle wall.)

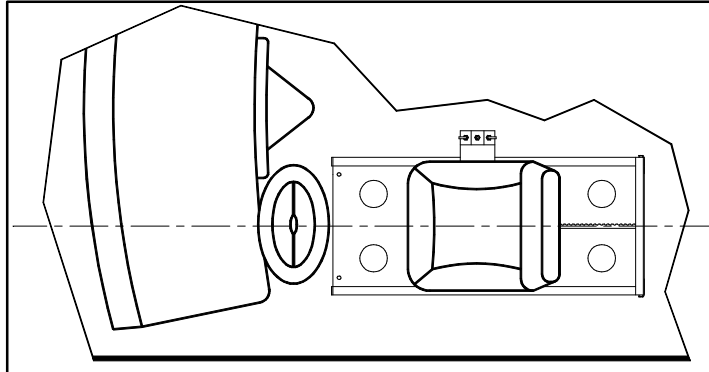


FIGURE 2-4: POWER SEAT BASE POSITION

- c. Temporarily connect 12VDC power source to the Power Seat Base, battery positive terminal to Harness RED wire and battery negative terminal to GREEN wire.
- d. Using "Up/Down" toggle switch, move seat DOWN to lowest position.
- e. Using "Forward/Reverse" toggle switch, move seat to most FORWARD position.
- f. Refer to **Figure 2-5**. If applicable, adjust vehicle tilt-steering wheel to straight (not tilted up or down) driving position. Measure distance from bottom of steering wheel to lower-front edge of seat-back. Position Power Seat Base so distance is equal to 12 - 14 inches (30 - 35 cm).

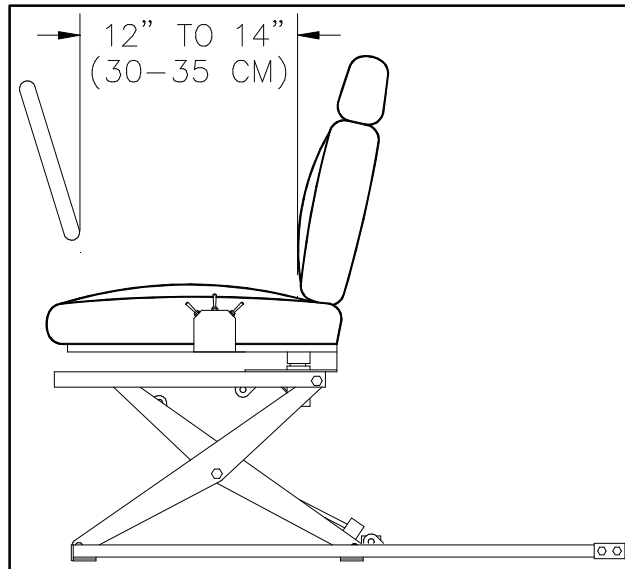


FIGURE 2-5: WHEEL-TO-SEAT CLEARANCE

- g. Ensure that Power Seat Base is still square/parallel with vehicle wall and mark position with tape or chalk.
- h. Using "Forward/Reverse" toggle switch, move seat to most REARWARD position.
- i. Using "Swivel In/Out" toggle switch, swivel seat to OUT position.
- j. Using "Up/Down" toggle switch, move seat UP to highest position.

- k. Refer to **Figure 2-6**. If applicable, make sure seatback is not reclined and in most upright position. Position entire Power Seat Base to allow adequate clearance between seatback and vehicle wall. Allow additional clearance for seatback flexing when occupied.

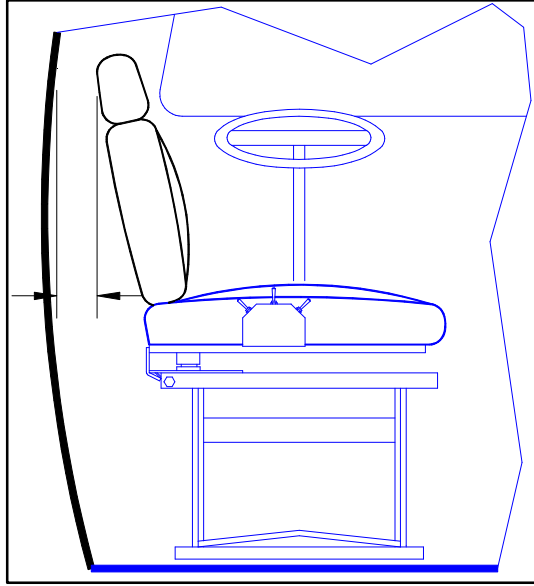


FIGURE 2-6: SEAT-TO-WALL CLEARANCE

- l. Using "Forward/Reverse" toggle switch, move seat to middle of Power Seat Base.
m. Using "Swivel In/Out" toggle switch, swivel seat to IN position.
n. Disconnect power source from Power Seat Base.



WARNING!

THE BASE FRAME IS DESIGNED TO ACCOMMODATE ONLY SIX MOUNTING BOLTS. ADDITIONAL BOLTS IN NON-AUTHORIZED LOCATIONS MAY ACT AS SEAT POSITION STOPS AND CAUSE MOTOR FAILURE DURING THE UP/DOWN FUNCTION. THE PROPER DRIVING POSITION OF THE POWER SEAT BASE IS THE FORWARD-MOST AND LOWEST POSITION.

- o. At each Base Frame mounting holes, drill 5/16" (8-mm) diameter hole through floor.



CAUTION!

Improper (warped) base frame installation can cause motor failure during the forward/reverse function. Due to variations in vehicle floor designs, care must be taken to secure the base frame assembly to the floor without bending or stressing the frame. Add spacer blocks under the base frame assembly to ensure proper, level installation.

- p. Refer to **Figure 2-7**. Determine if spacer blocks are needed between Base Frame and vehicle floor to ensure Base Frame will not bend or stress when mounting screws are installed and tightened. Fabricate spacer blocks, if required, and position between Base Frame and floor.

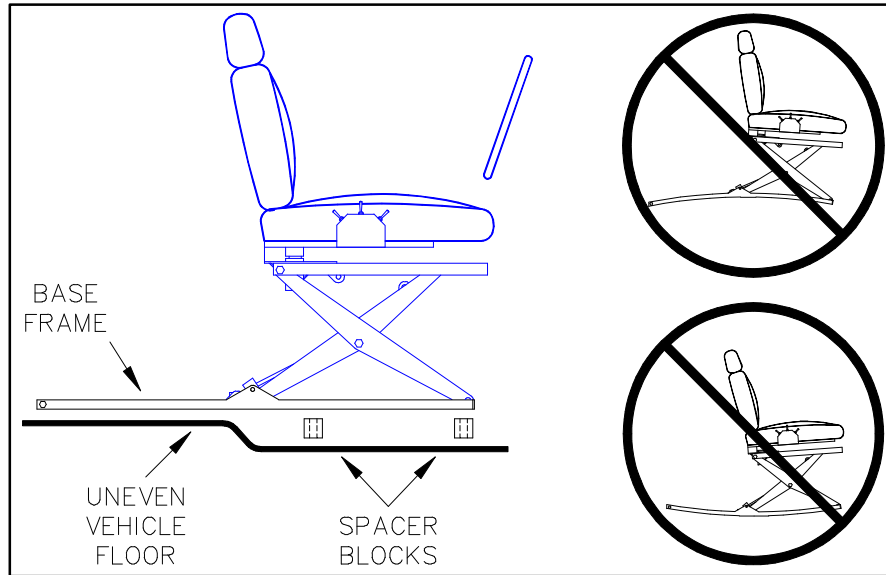



FIGURE 2-7: VEHICLE FLOOR PROFILE

 WARNING!
<p>THE CORRECT LENGTH MOUNTING SCREW WILL HAVE AT LEAST 1 1/2 THREADS PROTRUDING BEYOND THE LOCKNUT WHEN INSTALLED. IF SPACER BLOCKS ARE USED, USE EQUAL STRENGTH, OR GREATER, SCREWS OF ADEQUATE LENGTH.</p>

- q. Refer to **Figure 2-8**. Insert six mounting screws through Base Frame mounting holes.

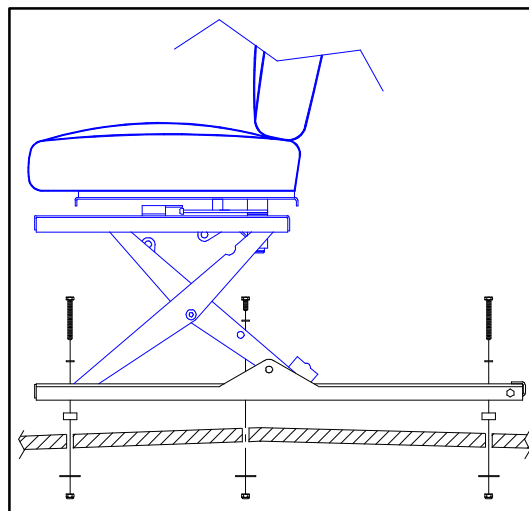


FIGURE 2-8: BASE FRAME MOUNTING

- r. From beneath vehicle, install fender washers and locknuts onto each mounting screw.

4. REINSTALL FACTORY SEAT BELT AND SHOULDER HARNESS

To reinstall the factory seat belt (and shoulder harness if necessary), follow this procedure:

- a. If factory seat belts and shoulder harness were mounted on vehicle floor and/or body and their mounting position is still accessible, remount in original position with original hardware.
- b. If factory seat belts and shoulder harness were attached to factory seat base or their mounting holes covered by Power Seat Base, refer to **Figure 2-9** and attach to Base Frame using original or equal strength hardware.

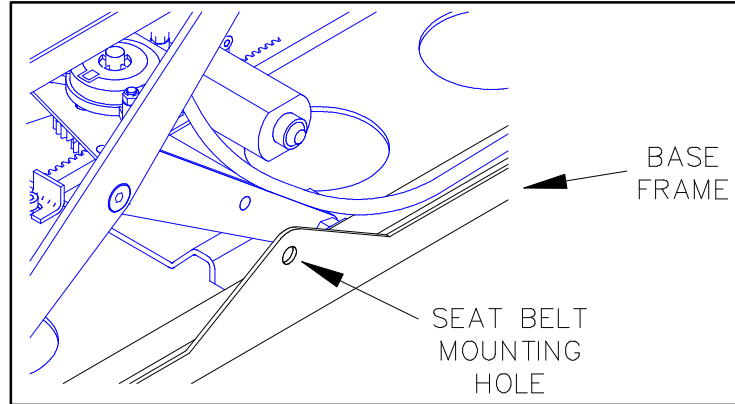


FIGURE 2-9: SEAT BELT MOUNTING LOCATION

- c. Make sure seat belt wiring is reconnected.

5. ADJUST SEAT FOR FACE-FORWARD POSITION

To ensure that the seat position is perfectly face-forward when swivelled to the IN position, follow this procedure:

- a. Temporarily connect 12VDC power source to the Power Seat Base, battery positive(+) terminal to Harness RED wire and battery negative (-) terminal to GREEN wire mounting bolt.
- b. At Control Box Assembly, use "Swivel In/Out" toggle switch to rotate seat OUT 2 - 3E to allow access to Swivel Adjustment Stop Bolt.
- c. Loosen locknut, adjust Swivel Adjustment Stop Bolt as needed, and tighten locknut.
- d. Use "Swivel In/Out" toggle switch to rotate seat IN and verify face-forward position. Repeat steps **b** and **c** if needed.

C. ELECTRICAL INSTALLATION

To install electrical power to the Power Seat Base, follow this procedure:

CAUTION!

CHECK VEHICLE BEFORE DRILLING. DO NOT DRILL INTO FACTORY WIRING, HYDRAULIC LINES, FUEL LINES, FUEL TANK, ETC.

1. At vehicle engine compartment, mount supplied main Circuit Breaker within 10 - 12" (25 - 30 cm) of battery.
2. At rear of Power Seat Base, drill one 1/2" (12-mm) hole through vehicle floor, deburr hole and install grommet.
3. Insert Power Seat Base Harness through grommet.
4. From beneath vehicle, run Harness along vehicle frame to circuit breaker. Make sure Harness does not interfere with moving or hot parts and secure with cable ties every 18" (45 cm).
5. At engine compartment, cut and retain 12" (30 cm) section from end of Harness RED wire.
6. Measure RED wire to reach circuit breaker and cut and remove any excess wire from Harness.
7. Using wire crimpers, crimp supplied terminal to end of RED Harness wire and connect to circuit breaker AUX terminal.
8. Connect end of 12" (30 cm) section of RED wire to circuit breaker BAT terminal.
9. Connect other end of 12" (30 cm) section of RED wire to POSITIVE terminal of vehicle battery.

WARNING!

- WEAR PROTECTIVE CLOTHING AND EYE PROTECTION AT ALL TIMES. BATTERIES CONTAIN ACID THAT CAN BURN. IF ACID COMES INTO CONTACT WITH SKIN, IMMEDIATELY FLUSH AFFECTED AREA WITH WATER AND WASH WITH SOAP.
- DO NOT SMOKE OR USE OPEN FLAME IN THE VICINITY OF BATTERY. ALWAYS WORK IN PROPERLY VENTILATED AREA.
- DO NOT LAY ANYTHING ON TOP OF A BATTERY.

D. VERIFY INSTALLATION

- Ensure that all decals are properly located and affixed to the Power Seat Base.
- Clear the vehicle floor of all loose material, high-plush carpet strands, etc. which may interfere with the operation of the Power Seat Base.
- Make sure that all fasteners are tightened properly.
- Make sure that the inside rails of the Upper Frame, Base Frame, and the Scissor Actuator Assembly are lubricated with light oil.
- Run the Power Seat Base through several cycles of all (Up/Down, Forward/Reverse, and Swivel In/Out) functions.
- Make sure that when the seat is swiveled IN, the seat face-forward position is perfectly straight ahead.
- The proper driving position for the Power Seat Base is at its FORWARD-MOST and LOWEST position. Adjust the seat for this position.
- Make sure that the seat belt indicator/chime operates properly when the vehicle ignition is turned ON.

E. CUSTOMER ORIENTATION

IMPORTANT - Customer Orientation -

Ricon Sales/Service Personnel must review the Warranty and Operator Manual with the customer to be certain he/she understands the safe operation of the Power Seat Base. Instruct the customer to always follow the operating instructions without exception.

This page intentionally left blank.

III. MAINTENANCE AND TROUBLESHOOTING

Regular maintenance of the RICON R1208 Six-Way Power Seat Base will provide optimum performance in addition to reducing the need for repairs. Ricon products are highly specialized and maintenance and repairs must be performed by an authorized Ricon service technician using Ricon replacement parts. Maintenance inspections are required at least every six months.

A. MAINTENANCE SCHEDULE

TABLE 3-1: SIX MONTH SAFETY CHECK	
SERVICE POINT	ACTION TO PERFORM
All pivot points and fasteners for tightness	Tighten as needed
Inside rails on Upper Frame and Base Frame Assemblies	Apply light oil as needed
Scissor Actuator Assembly (Up/Down motor ball and screw)	Apply light oil as needed
Harness (electrical) for contact with moving or hot vehicle parts	Adjust as needed
Slide bearings in lower and upper rails for wear	Replace if needed
Bronze bearing at Swivel Plate for wear	Replace if needed
Rack Gear Assembly for wear	Replace if required
END OF TABLE	

B. TROUBLESHOOTING GUIDE

For troubleshooting the Power Seat Base, refer to **Table 3-2** and **Figure 3-1**. The troubleshooting guide is designed to provide a logical starting point to locate general problems that could occur with the Power Seat Base. However, not all possible problems or combinations of problems are listed. The guide assumes that the vehicle battery is fully charged and that the battery terminals/connectors are clean and tight.

 WARNING!
THE TROUBLESHOOTING GUIDE DOES NOT INCORPORATE ROUTINE SAFETY PRECAUTIONS OR PRELIMINARY PROCEDURES. AUTHORIZED RICON SERVICE TECHNICIANS SHOULD PERFORM TROUBLESHOOTING.

TABLE 3-2: TROUBLESHOOTING GUIDE

SYMPTOM		POSSIBLE CAUSE	REMEDY
NO OPERATION	No electrical power to Power Seat Base	Main Circuit Breaker tripped.	Reset circuit breaker.
		RED wire in harness (electrical) shorted to vehicle frame.	Investigate reason for short or breakage and repair wire or replace harness.
		RED wire in harness (electrical) broken/open.	
		Circuit Breaker defective.	Replace circuit breaker.
	Poor ground connection at Base Frame.	Clean and tighten connection or repair.	
No electrical power to toggle switches	Broken common wire electrical connector.	Repair connector.	
NO UP OR DOWN	Partial motion	Obstruction in Base Frame rail(s).	Remove obstruction and check for any damage.
	No motion	Broken electrical connector at "Up/Down" toggle switch.	Repair connector.
		Toggle switch defective.	Replace toggle switch.
		Scissor Actuator Assembly Actuator defective.	Replace Scissor Actuator Assembly.
NO FORWARD OR REVERSE	Partial motion	Obstruction in Base Frame rail(s).	Remove obstruction and check for any damage.
		Rack Gear Assembly jammed.	
	No motion	Broken electrical connector at "Forward/Reverse" toggle switch.	Repair connector.
		Toggle switch defective.	Replace toggle switch.
		Horizontal Motor defective.	Replace motor.
NO SWIVEL IN OR OUT	Partial motion	Contact between seat and wall or seat belt/shoulder harness wrapped.	Make sure seatback is not reclined or clear seat belt/shoulder harness.
	No motion	Broken electrical connector at "Swivel In/Out" toggle switch.	Repair connector.
		Toggle switch defective.	Replace toggle switch.
		Swivel Motor defective.	Replace motor.
END OF TABLE			

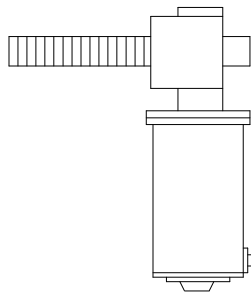
COLOR CODES

LETTER	COLOR
G	GREEN
V	VIOLET
GY	GRAY
R	RED
O	ORANGE
BK	BLACK
W	WHITE
BL	BLUE

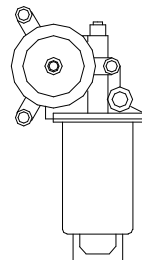
LABELS

CW	CLOCKWISE
CCW	COUNTERCLOCKWISE
FWD	FORWARD
REV	REVERSE

SCISSOR ACTUATOR ASSEMBLY



HORIZONTAL MOTOR



SWIVEL MOTOR

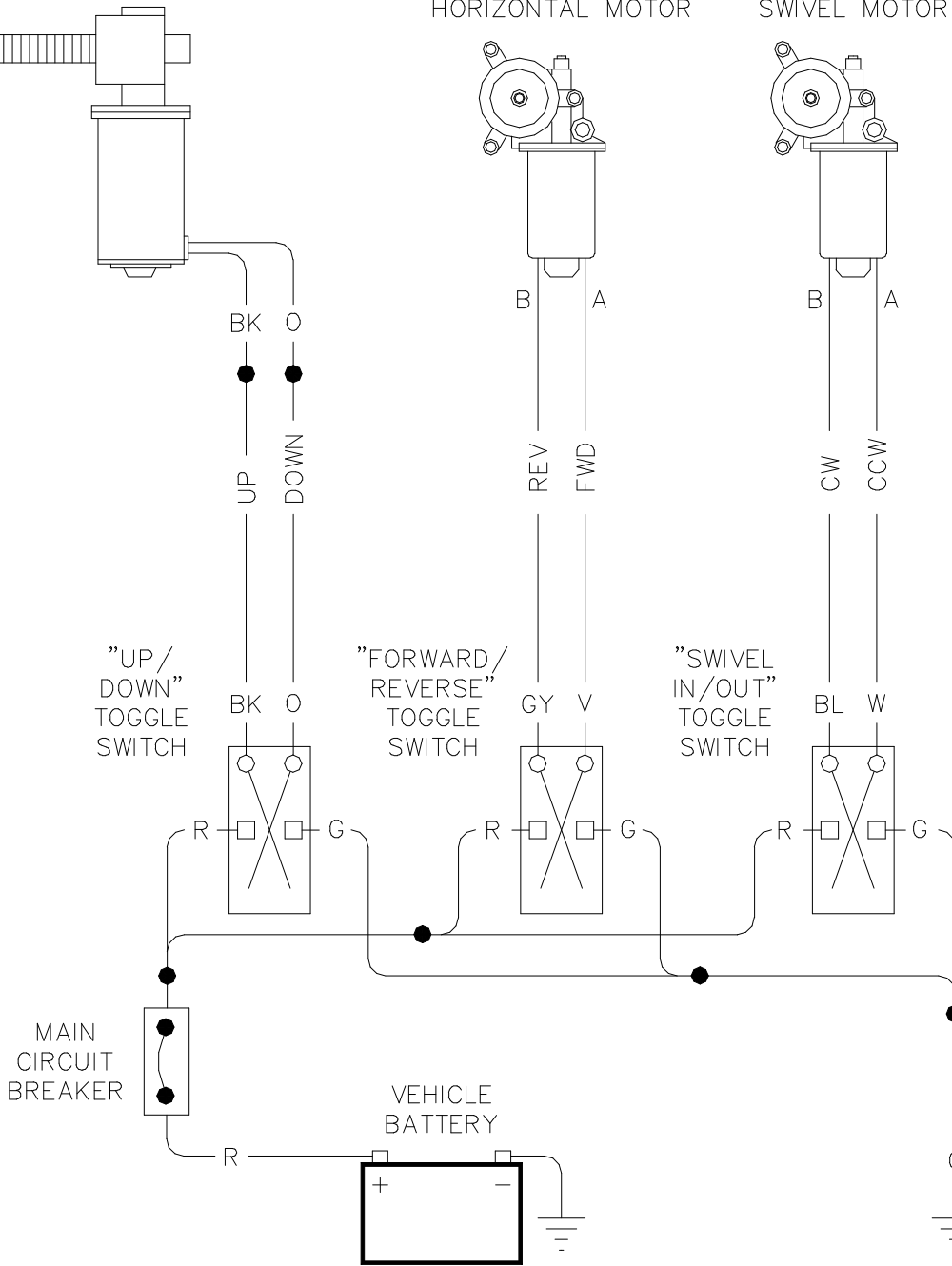
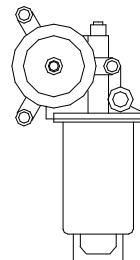
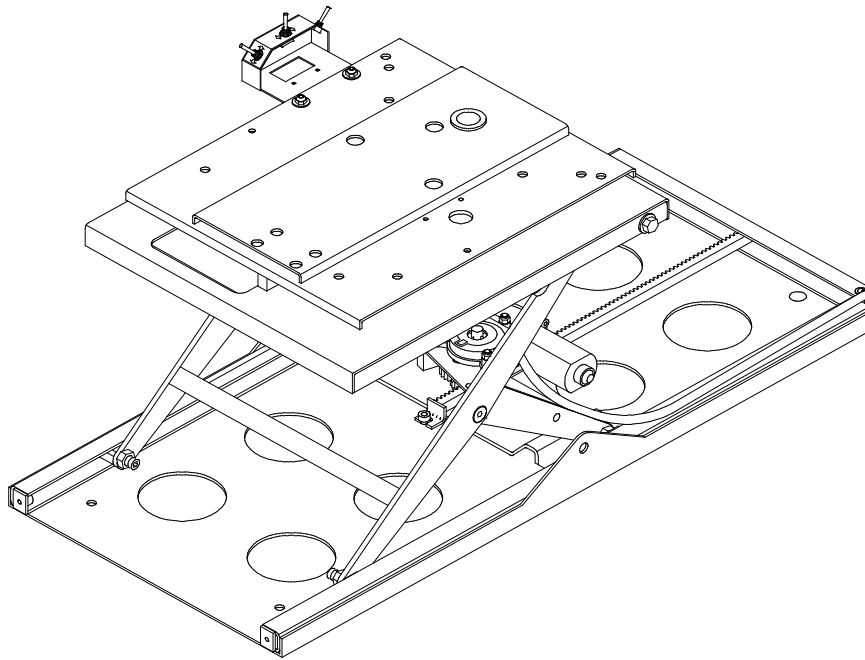


FIGURE 3-1: ELECTRICAL WIRING DIAGRAM

This page intentionally left blank.

IV. PARTS DIAGRAMS AND LISTS

This chapter contains parts diagrams and lists for the RICON R1208 Six-Way Power Seat Base. The parts diagrams are exploded views of lift components with individual components referenced by numbers. The accompanying parts list contains the reference number, a description, the quantity used, and the Ricon stock number. For parts identification, locate the part on the appropriate drawing and note the reference number. The parts list that accompanies each drawing will list the stock number of the desired part.



PRODUCT MODEL AND KIT NUMBERS	
PRODUCT NUMBER	R1208, R1208-E & R1208-L
DOCUMENTATION KIT NUMBER	01063
SPARE DECAL KIT NUMBER	26011

PARTS DIAGRAMS	PAGE
FIGURE 4-1: POWER SEAT BASE #1	4-2
FIGURE 4-2: POWER SEAT BASE #2	4-6
POWER SEAT BASE SPECIFICATIONS	4-9

POWER SEAT BASE
 MODEL: R-1208
 SERIAL NO's. 72500-74999
 SERIAL NO's. 75000-77199

DATE: 10/09/95
DWG. PSB00001
REV. 006

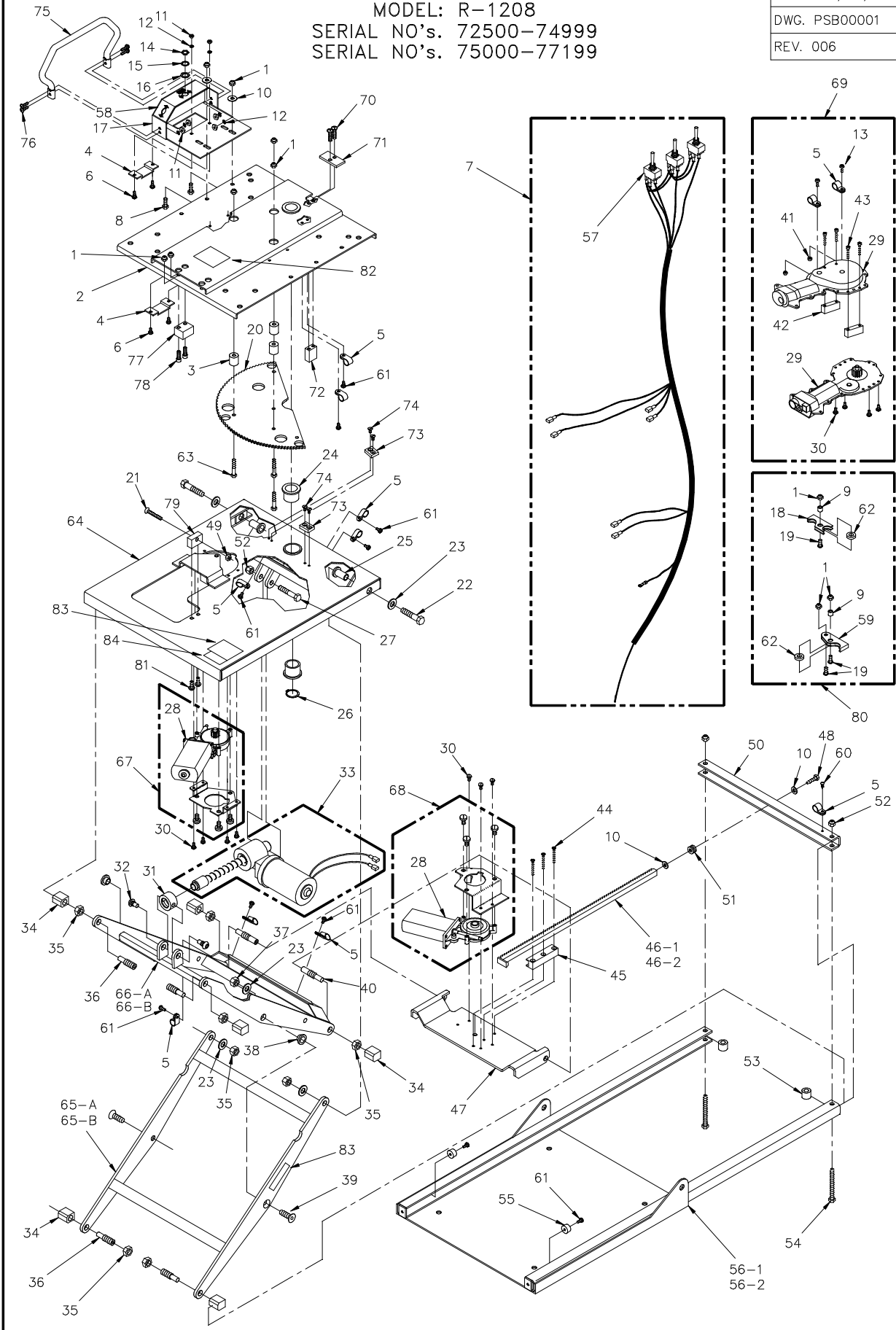


FIGURE 4-1: POWER SEAT BASE #1

32DSB02.A

POWER SEAT BASE #1
MODEL: R1208
SERIAL NO's. 72500-74999
SERIAL NO's. 75000-77199

REF.	DESCRIPTION	QTY.	PART NO.
1	NUT-HEX 1/4-20 NYLON INSERT (BAG OF TEN)	10	15919
2	ASSY., WELD, SWIVEL PLATE	1	PS-1128
3	SPACER, SWIVEL GEAR	3	PS-1124
4	CLAMP, FLAT PLASTIC	2	PS-1068
5	CLIP, 1/2 PLASTIC (SMITH8916) BLACK	11	25533
6	MS, 10-24 X 1/4 PHIL PAN	4	28105
7	HARNESS, POWER SEAT BASE	1	PS-1069
8	BOLT, HEX 1/4-20 X 3/4 GR5	2	28166
9	BUSHING, STEEL, 0.25 X 0.38 X 0.35	2	PS-1193
10	WASHER, 1/4 FLAT SAE	2	28273
11	NUT-HEX 10-24 (BAG OF TEN)	6	14489
12	WASHER #10 SPLIT LOCK (BAG OF TEN)	6	15941
13	MS 10-24 X 1/2 PHIL PAN	2	28111
14	NUT, U-550, TOGGLE SWITCH	3	28347
15	STAR WASHER, TOGGLE SWITCH, U-109	3	28346
16	LOCATING RING, TOGGLE SWITCH, U-108 (BAG OF TEN)	3	15905
17	CONTROL BOX ASSY	1	PS-1051
18	STOP, CENTER, SWIVEL GEAR	1	PS-1195
19	SOCKET BUTTON, 1/4-20 X 5/8	3	28162
20	GEAR, SWIVEL	1	PS-1113
21	MS 1/4-20 X 1-1/4 PHIL FLAT	1	28195
22	BOLT-HEX 7/16-14 X 2 GR5	2	28257
23	WASHER 7/16 FLAT	4	28291
24	BEARING, BRONZE, 1620-16 FL 2402	2	25306
25	SPACER, FLANGED, UPPER FRAME	2	PS-0052
26	RING, EXTERNAL RETAIN 1"	1	14-31-100
27	BOLT-HEX 3/8-16 X 2 GR5	1	28237
28	MOTOR-DELCO PH3 MODIFIED	2	V2-ES-040
29	GEAR MOTOR, DELCO PHASE II, 12V DC	2	25480
30	MS, 8-32 X 1/4 PHIL PAN	11	28067
31	NUT, SCISSORS ACTUATOR	1	PS-1046
32	SCREW, SPECIAL, ACTUATOR NUT	2	PS-1059
33	ASSY, SCISSOR ACTUATOR	1	PS-1140
34	BEARING, SLIDE	6	PS-0031
35	NUT-HEX, 1/2-20 JAM	6	28489
36	PIN, SLIDE BEARING ADJUSTMENT X 1.50	4	PS-0032
37	NUT-HEX 7/16-14	4	28336
38	SPACER, FLANGED, SCISSORS	2	PS-0063
39	SCREW, SOCKET FLAT HEAD 7/16-14 X 1.25	2	28620
40	PIN, SLIDE BEARING ADJUSTMENT X 2.25	2	PS-0033
41	NUT-HEX 10-24 NYLON INSERT	2	28305
42	BLOCK, MOTOR SUPPORT	2	PS-1010
43	SOCKET CAP, 8-32 X 1	4	28094
44	MS 8-32 X 7/8 PHIL FLAT	3	28081
45	GUIDE, WELD, RACK GEAR	1	PS-1009
46-1	ASSY, WELD, RACK GEAR +12	1	PS-1017
46-2	ASSY, RACK GEAR +12	1	PS-1217
47	PLATE, HORIZONTAL DRIVE	1	PS-1012
48	BOLT-HEX 1/4-20 X 1 GR 5 (BAG OF TEN)	1	14493
49	NUT-HEX 1/4-20	1	28308
50	CHANNEL, REAR FRAME	1	PS-1005
51	GROMMET, 0.25 X 0.44 X 0.13 (X 0.63 X 0.38)	1	26649
52	NUT-HEX 5/16-18 NYLON INSERT	3	28314
53	P.V.C. SPACER BUSHING	2	VS-BU-06
54	BOLT-HEX 5/16-18 X 3 GR 5 FULL THREAD	2	282211
55	BUMPER RUBBER 315-009	2	VS-PL-02
56-1	ASSY., WELD, BASE FRAME - STD	1	PS-1004
56-2	BASE FRAME, WELD ASSY, +12	1	PS-1204
57	SWITCH, TOGGLE, DPDT (4 TABS) OLD RGB/PSB	3	26433
58	DECAL, CONTROL PANEL PSB	1	26112
59	STOP, END, SWIVEL GEAR	1	PS-1194
60	SMS #8 X 1/2 PHIL PAN HD TEK (BAG OF TEN)	1	15961

REF.	DESCRIPTION	QTY.	PART NO.
61	MS 10-24 X 3/8 PHIL PAN (BAG OF TEN)	12	15944
62	BUSHING, 0.38 X 0.75 X 0.19	2	PS-1192
63	BOLT-HEX 1/4-20 X 1-1/2 GR5	3	28168
64	ASSY., WELD, UPPER FRAME	1	PS-1105
65-A	SCISSOR ASSY., OUTER (FROM SERIAL #72500 TO SERIAL #74999)	1	PS-1021
65-B	ASSY., WELD-OUTER SCISSOR (FROM SERIAL #75000 TO PRESENT)	1	PS-1032
66-A	SCISSOR ASSY., INNER (FROM SERIAL #72500 TO SERIAL #74999)	1	PS-1025
66-B	ASSY., WELD-INNER SCISSOR (FROM SERIAL #75000 TO PRESENT)	1	PS-1031
67	KIT, UPPER MOTOR, RETRO FIT	1	01002
68	KIT, LOWER MOTOR, RETRO FIT	1	01003
69 *	DELCO PH2 MOTOR ASSY. USED ONLY FROM S/N 72500 TO S/N 74999	1	
70	SOCKET BUTTON HEAD SCREW BLK 1/4-20 X 1	2	28183
71	PLATE, MOUNT-REAR BLOCK	1	PS-1200
72	STOP, REAR BLOCK	1	PS-1198
73	PLATE, REAR STOP	2	PS-1199
74	SOCKET FLAT 10-24 X 3/8, SST (BAG OF TEN)	4	15962
75	GAURD, SWITCH-SAFETY	1	PS-1052
76	MS 10-24 X 5/8 PHIL PAN	4	28112
77	STOP, SWIVEL-DELTRIN BLOCK	1	PS-1202
78	SOCKET CAP 1/4-20 X 0.75	2	28208
79	STOP, SWIVEL-ADJUSTMENT	1	PS-1205
80 *	STOP MECHANISM. USED ONLY FROM S/N 72500 TO S/N 74999	1	*
81	SOCKET BUTTON, 1/4-20 X 5/8	2	28162
82	DECAL, UNPACKING INSTR,PSBASE	1	26203
83 **	DECAL,SERIAL#, "CE" UNIVERSAL	1	**
84	DECAL,PATENT# ; PENDING GENERIC	1	32-10-171

* Individual Parts Available Separately.

** Decal is in two parts. Only Ricon replaceable.

This page intentionally left blank.

POWER SEAT BASE
 R-1208
 SERIAL NO's. 77250 and HIGHER

DATE: 03/08/99
DWG. PSB00002
REV. D

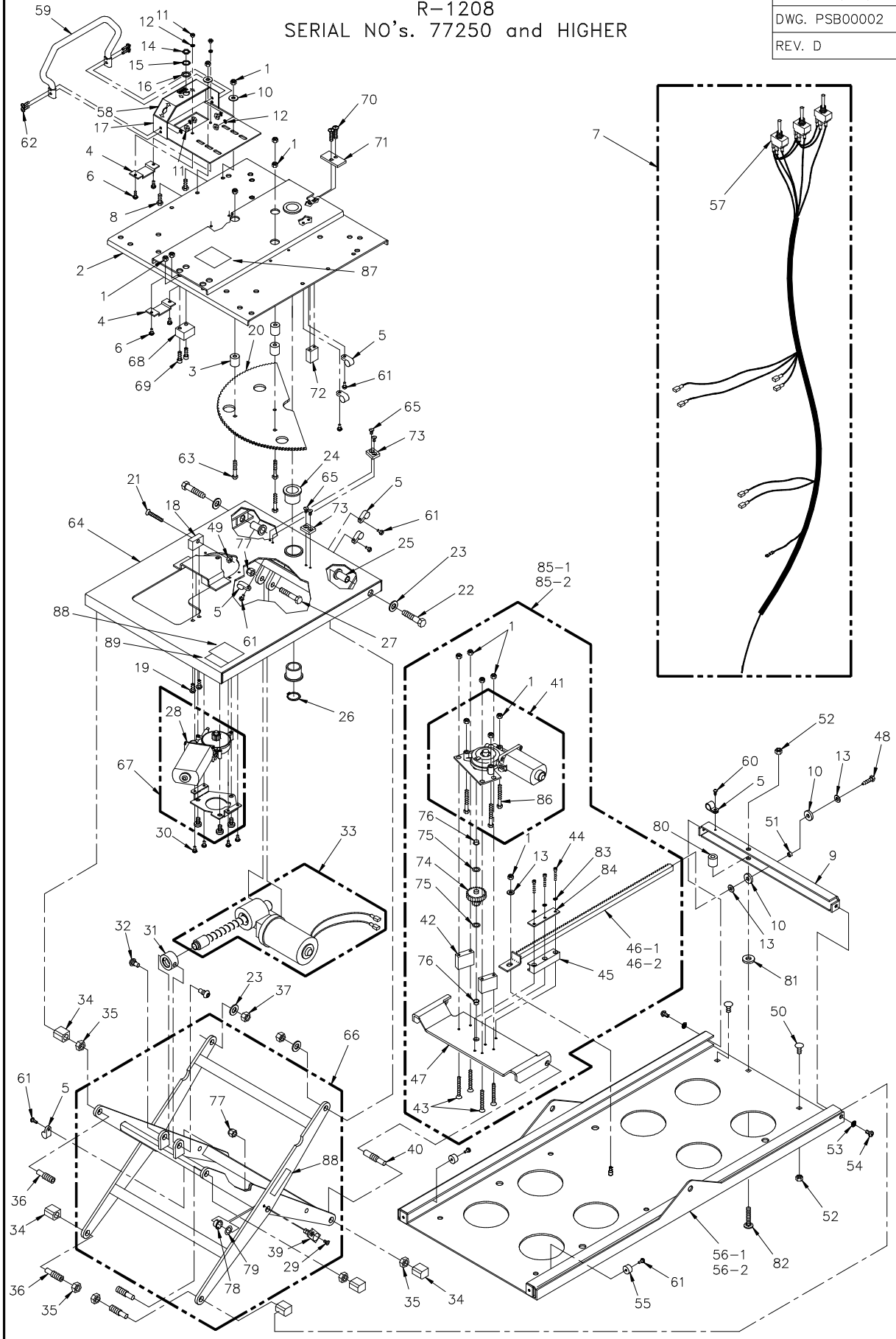


FIGURE 4-2: POWER SEAT BASE #2

**POWER SEAT BASE #2
R 1208
SERIAL NO'S. 77250 and HIGHER**

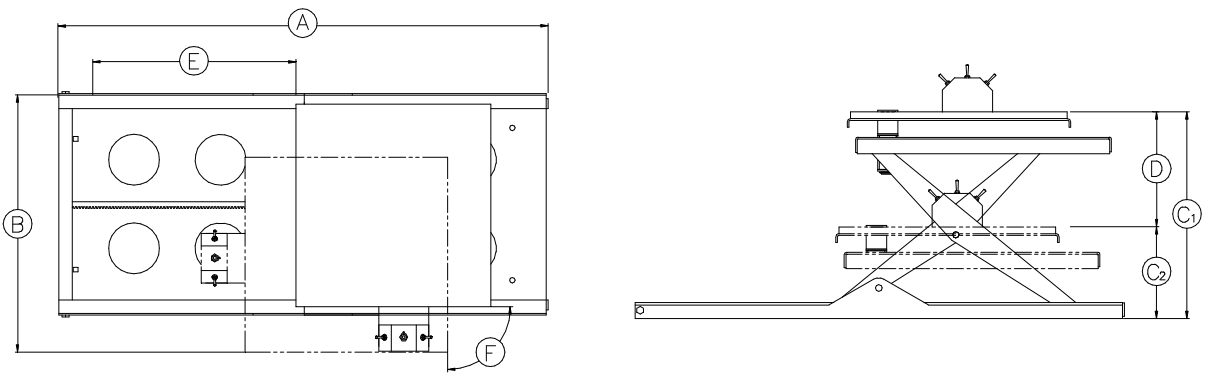
REF.	DESCRIPTION	QTY.	PART NO.
1	NUT-HEX 1/4-20 NYLON INSERT (BAG OF TEN)	12	15919
2	ASSY., WELD, SWIVEL PLATE	1	PS-1128
3	SPACER, SWIVEL GEAR	3	PS-1124
4	CLAMP, FLAT PLASTIC	2	PS-1068
5	CLAMP,NYL,1/2 PLASTIC (SMITH8916) BLACK	7	25533
6	MS, 10-24 X 1/4 PHIL PAN	4	28105
7	HARNESS, POWER SEAT BASE	1	PS-1069
8	BOLT, HEX 1/4-20 X 3/4 GR5	2	28166
9	BAR-REAR FRAME	1	PS-2004
10	WASHER 3/8 RUBER CUSHION	2	282802
11	NUT-HEX 10-24 (BAG OF TEN)	6	14489
12	WASHER #10 SPLIT LOCK (BAG OF TEN)	6	15941
13	WASHER, 1/4 FLAT SAE	3	28273
14	NUT, U-550, TOGGLE SWITCH	3	28347
15	STAR WASHER, TOGGLE SWITCH, U-109	3	28346
16	LOCATING RING, TOGGLE SWITCH, U-108 (BAG OF TEN)	3	15905
17	CONTROL BOX ASSY	1	PS-1051
18	STOP, SWIVEL-ADJUSTMENT	1	PS-1205
19	SOCKET BUTTON, 1/4-20 X 5/8	2	28162
20	GEAR, SWIVEL-BASE PLATE	1	PS-1112
21	MS 1/4-20 X 1 1/4 PHIL FLAT	1	28195
22	BOLT-HEX 7/16-14 X 2 GR5	2	28257
23	WASHER 7/16 FLAT	4	28291
24	BEARING, BRONZE, 1620-16 FL 2402	2	25306
25	SPACER, FLANGED, UPPER FRAME	2	PS-0052
26	SNAP RING, EXTERNAL RETAIN 1"	1	14-31-100
27	BOLT-HEX 3/8-16 X 2 GR5	1	28237
28	MOTOR-DELCO PH3 MODIFIED	2	V2-ES-040
29	MS 10-24 X 3/8 SLOT FLAT	2	28108
30	MS, 8-32 X 1/4 PHIL PAN	11	28067
31	NUT, SCISSORS ACTUATOR	1	PS-1046
32	SCREW, SPECIAL, ACTUATOR NUT	2	PS-1059
33	ASSY, SCISSOR ACTUATOR	1	PS-1140
34	BEARING, SLIDE	6	PS-0031
35	NUT-HEX, 1/2-20 JAM	6	28489
36	PIN, SLIDE BEARING ADJUSTMENT X 1.50	4	PS-0032
37	NUT-HEX 7/16-14	2	28336
38	SPACER, FLANGED, SCISSORS	2	PS-0063
39	STUD-WASSY	2	PS-2022
40	PIN, SLIDE BEARING ADJUSTMENT X 2.25	2	PS-0033
41	MOTOR DRIVE-ASSY (FOR S/N 77199 AND BELOW USE P/N 01297)	1	PS-2046
42	BLOCK, STANDOFF	2	PS-2042
43	SCREW, FHP, 1/4-20 X 2.00	4	28190
44	SCREW, HEX, 8-32 X 1 BLK OXD	3	28094
45	GUIDE, WELD, RACK GEAR	1	PS-1009
46-1	GEAR, RACK-WASSY, STANDARD	1	PS-2037
46-2	GEAR, RACK-WASSY, EXTENDED	1	PS-2038
47	PLATE, HORIZONTAL DRIVE	1	PS-2041
48	BOLT-HEX 1/4-20 X 1 GR 5 (BAG OF TEN)	1	14493
49	NUT-HEX 1/4-20	1	28308
55	BUMPER RUBBER 315-009	2	VS-PL-02
56-1	PLATE, FRAME-WASSY, STANDARD	1	PS-2001
56-2	PLATE, FRAME-WASSY, EXTENDED	1	PS-2101
57	SWITCH, TOGGLE, DPDT (4 TABS) OLD RGB/PSB	3	26433
58	DECAL, CONTROL PANEL PSB	1	26112
50	BOLT-CARRIAGE, 5/16-18 X 3/4L, GR5 PL	2	282293
51	STANDOFF-GEAR MOUNT	1	PS-2006
52	NUT-HEX 5/16-18 NYLON INSERT	3	28314
53	WASHER 1/4 SPLIT LOCK	2	28274
54	SOCKET BUTTON 1/4-20 X 1/2	2	28182
59	GUARD, SWITCH-SAFETY	1	PS-1052
60	SMS #8 X 1/2 PHIL PAN HD TEK (BAG OF TEN)	1	15961
61	MS 10-24 X 3/8 PHIL PAN (BAG OF TEN)	12	15944
62	MS 10-24 X 5/8 PHIL PAN	4	28112
63	BOLT-HEX 1/4-20 X 1-1/2 GR5	3	28168

REF.	DESCRIPTION	QTY.	PART NO.
64	ASSY., WELD, UPPER FRAME	1	PS-1105
65	SOCKET FLAT 10-24 X 3/8, SST (BAG OF TEN)	4	15962
66	ASSY, SCISSOR FRAME	1	PS-1310
67	MOTOR, ASSEMBLY-UPPER	1	PS-1106
68	STOP, SWIVEL, DELRIN BLOCK	1	PS-1202
69	SOCKET CAP 1/4-20 X 0.75	2	28208
70	SOCKET BUTTON HEAD SCREW BLK 1/4-20 X 1	2	28183
71	PLATE, MOUNT-REAR BLOCK	1	PS-1200
72	STOP, REAR BLOCK	1	PS-1198
73	PLATE, REAR STOP	2	1 PS-1199
74	GEAR, DRIVE		1 PS-2010
75	BEARING-THRUST .375 ID X .625 OD X .0585	2	25375
76	BUSHING-FLANGE, 0.38 ID X 0.25L	2	253845
77	NUT-HEX 3/8-16 NYLON INSERT (BAG OF TEN)	3	15931
78	BUSHING-FLANGE, 0.50 ID X 0.25 L	2	253846
79	WASHER, STEEL-0.508 I.D. X 0.749 O.D. X 0.045 THK	2	282821
80	SPACER, REAR FRAME	1	10887
81	STANDOFF-BRIDGEPLATE ACTUATOR PIVOT	1	F9-0234
82	SCREW, CAR, 5/16-18 X 1 3/4	1	10888
83	WASHER, SPL, #8 (BAG OF TEN)	3	15913
84	PLATE, STIFFENER, GEAR GUIDE	1	PS-2035
85-1	DRIVE, HORIZONTAL-ASS'Y. - STD	1	PS-2047
85-2	DRIVE, HORIZONTAL-ASSY EXT.	1	PS-2045
86	SCREW, HEX, 1/4-20 X 1 1/4 SST	3	281691
87	DECAL, UNPACKING INSTR,PSBASE	1	26203
88 *	DECAL,SERIAL#, "CE" UNIVERSAL	1	*
89	DECAL,PATENT# ; PENDING GENERIC	1	32-10-171

* Decal is in two parts. Only Ricon replaceable.

APPENDIX 1 POWER SEAT BASE SPECIFICATIONS

Power	Electrical
Motor rating - vertical	12 Volt DC, 16 Amp avg./cycle
Motor rating - horizontal	12 Volt DC, 9 Amp avg./cycle
Motor rating - swivel	12 Volt DC, 5 Amp avg./cycle
Rated load capacity	300 pounds
Seatbase weight	95 lbs.



REF	A	B	C ₁	C ₂	D	E	F
DIMENSIONS (inches)							
Product	Length	Width	Height, highest position	Height, lowest position	Vertical travel	Forward/reverse travel	Swivel
R1209	36.25	16.31	15.50	6.25	9.25	13.63	172 degrees (90 deg right and 82 deg left)

This page intentionally left blank.