



SERVICE BULLETIN

Subject: Carriage Lock Assembly
Applicable Products: HCL Series "Space Pro"
Effectivity: All HCL Series Lifts

Ricon service bulletins are for use by professional service technicians, and are not intended for use by

non-professionals or amateurs. Service bulletins alert technicians to issues that may occur with Ricon products, and are intended to assist the technician in the proper service of those products.

Professional service technicians have the background and knowledge to perform maintenance work properly and safely.

An issue described by a service bulletin does not necessarily apply to every unit in a product line. A Ricon authorized service technician will be able to determine which units can benefit from the information provided here.

Introduction

Pin on stow lock backing out. See Figure [01]. If this condition is found call Ricon Service Department.

Incorporation

Ricon strongly recommends the incorporation of this service bulletin at the next scheduled maintenance.

Caution

If pin is not checked and comes completely out, lateral acceleration may cause the lift to deploy from its stowed position.

Corrective Action

If this condition is found call Ricon Service Department at 1-800-322-2884

Parts Involved

Gear and Pin

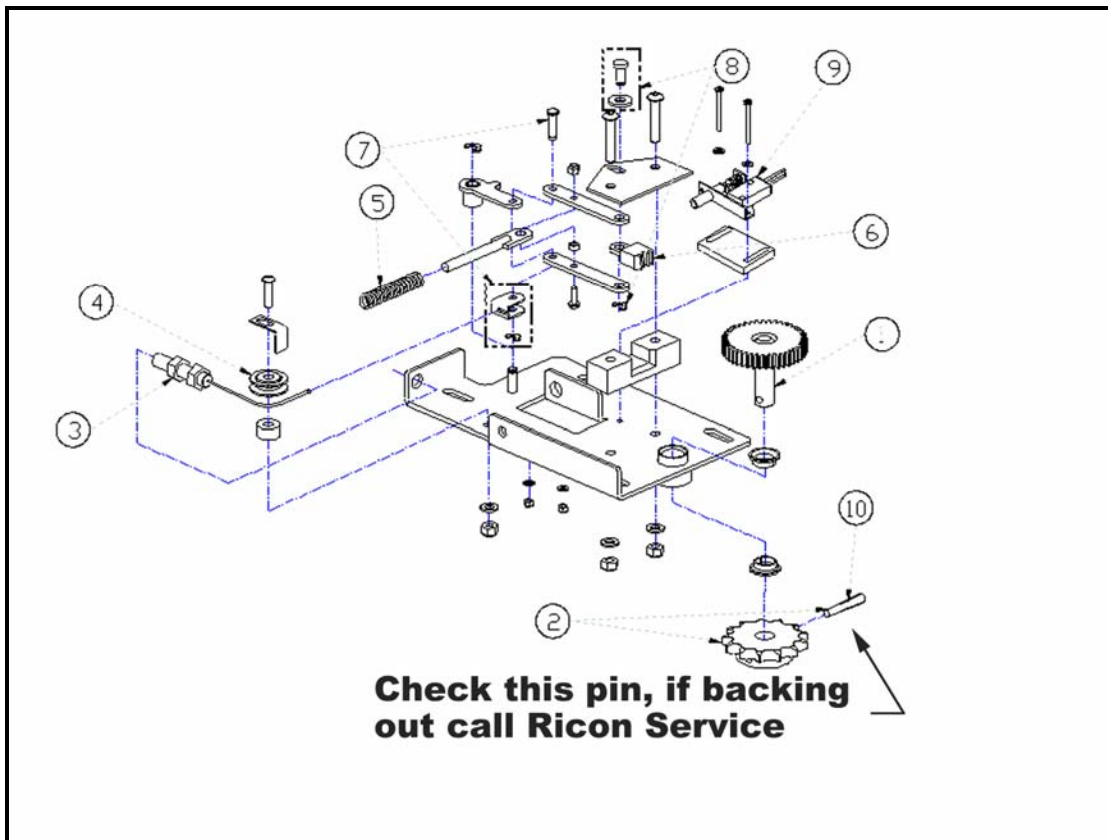


Figure 1

- Check Gear (2) and Pin (10), if pin is drifting out push pin in.
- If this condition is found call Ricon Service Department at 1-800-322-2884