



**INSTALLATION INSTRUCTIONS
ROLL STOP REPLACEMENT KIT # 01230**

- Be certain that these supplemental instructions are read and understood completely before installation is attempted. You should also refer to the Service/Owner Manual for additional installation instructions and safety precautions.
- Check contents of this kit and notify Ricon immediately of any missing parts. Claims for damages that have occurred during shipping must be made to the shipper.

TABLE OF CONTENTS	PAGE
I. INTRODUCTION	1
II. TOOLS REQUIRED	1
III. DISASSEMBLY PROCEDURE	2
IV. ASSEMBLY PROCEDURE	3

I. INTRODUCTION

The following instructions outline the replacement of a Rollstop on a S-2006 Series Lift.

II. TOOLS REQUIRED

5/16 Socket head	3/16 Rivet Gun	21/64 Drill Bit	Drill
7/16 Wrench	#10 Drill Bit	Hex key set	

III. DISASSEMBLY PROCEDURE

- A. Remove item 1 by removing items 12 & 21 & 25.
- B. Remove items 4 & 5 by:
 - 1. Removing four set screws item 26.
 - 2. Remove two springs (items 6A and 6B).
 - 3. Remove item 13 from the platform.

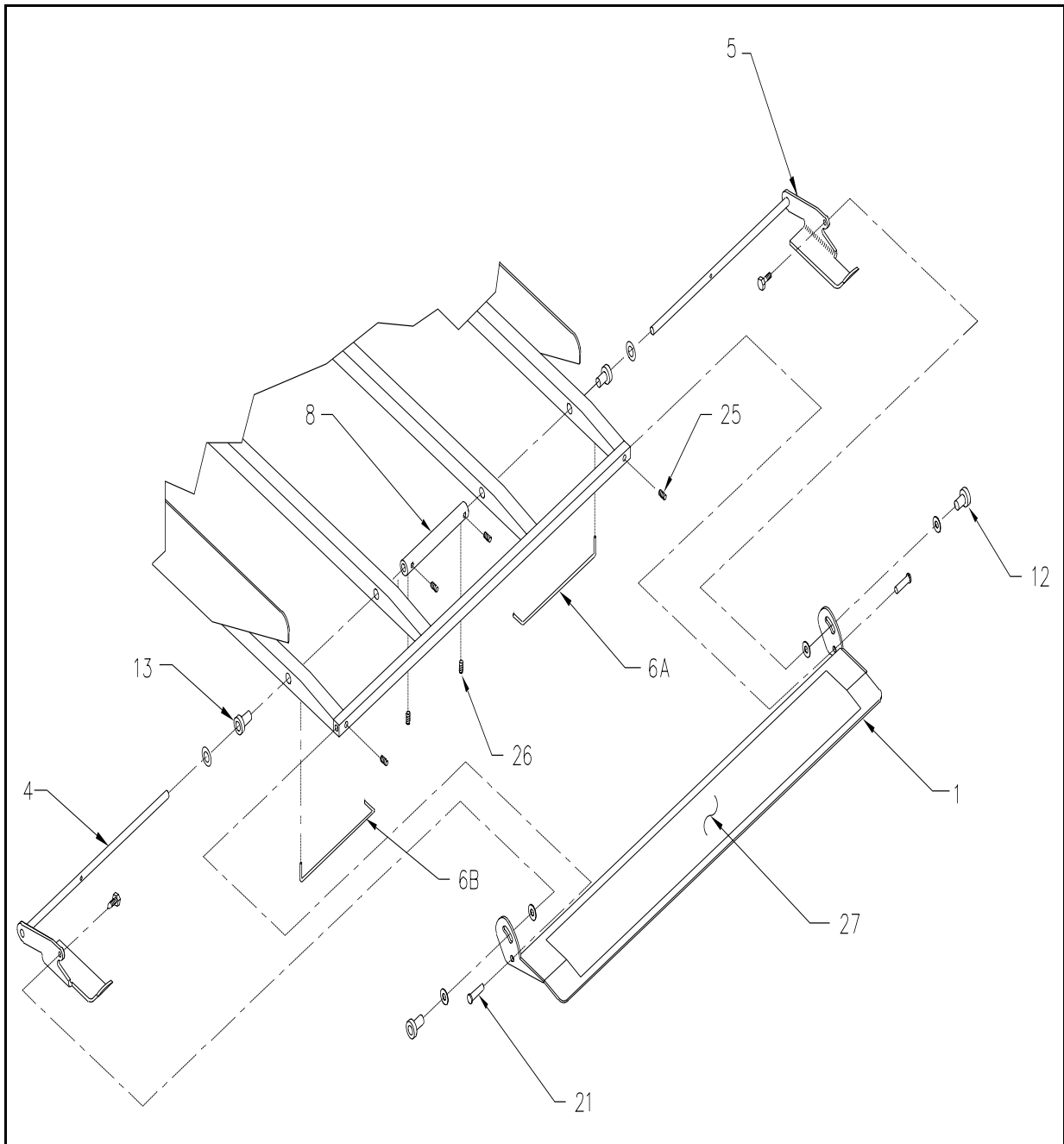


FIGURE [1]

IV. ASSEMBLY PROCEDURE

- A. Locate and place ramp extension onto the platform.
- B. Both side-plates must match before proceeding to the following steps.
- C. Using clamps, fasten the two side-plates in place.
- D. Using the lower lip of the ramp extension as a template, mark through the three existing holes on the lower lip.
- E. Remove the ramp extension from the platform.
- F. Using the marked areas, drill three $21/64$ through holes.
- G. Attach the ramp extension to the platform and use the supplied $5/16$ bolts to fasten in place.
- H. Using clamps, fasten the side-plates to the platform. This prevents any bending during drilling.
- I. Using the side connecting plates as a template drill all eight holes using #10 drill bit.
- J. Using the supplied rivets fasten the ramp extension.

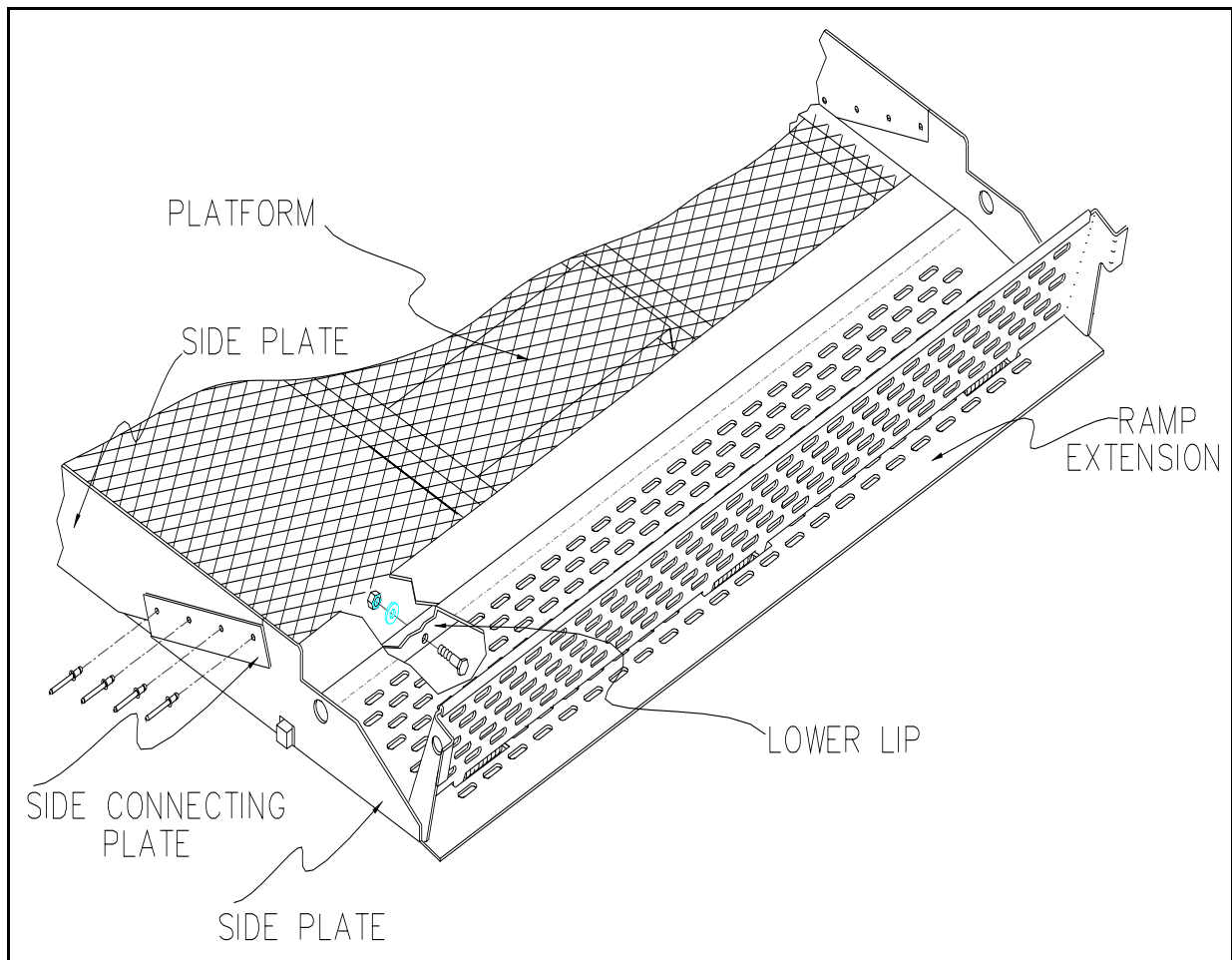


FIGURE [2]

NOTES