



**INSTALLATION INSTRUCTIONS
ECLIPSE® ENCLOSURE DOOR WITH
INTERLOCK SWITCH
KIT # F8-0303**

- Read and understand supplemental instructions completely before installation is attempted. Refer to the Service/Owner Manual for additional installation instructions and safety precautions.
- Check contents of kit. Immediately notify Ricon of any missing parts. Claims for damages that have occurred during shipment must be made to the shipper.

TABLE OF CONTENTS	PAGE
I. TOOLS REQUIRED	1
II. INTRODUCTION	1
III. INSTALLATION	1
A. LATCH ASSEMBLY- FORD	1
B. LATCH ASSEMBLY- DODGE	2
C. ENCLOSURE DOOR INSTALLATION	4
D. INTERLOCK SWITCH KIT INSTALLATION	5

I. TOOLS REQUIRED

1/4" dia. drill bit Hex wrench set Combination wrench set

II. INTRODUCTION

This document provides a step-by-step procedure for installing an Eclipse enclosure door. It also provides instructions for installing an interlock switch.

III. INSTALLATION

A. LATCH ASSEMBLY - FORD

1. Refer to **Figure [1]** for an illustration of the striker portion of the latch assembly. The striker is located on the top front of the enclosure, just to the right of the enclosure centerline. The striker will be used as a template for the holes to be drilled. Center the striker between the hex bolt head and hex nut as shown. Place the striker's two mounting holes in line with the hex bolt head and hex nut as shown. Mark the enclosure.

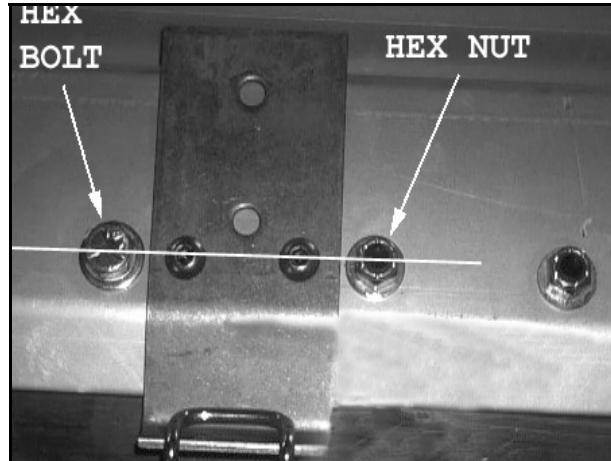


FIGURE [1]: STRIKER LOCATION

▲ CAUTION

CHECK AREA BEHIND PART BEING DRILLED TO AVOID ACCIDENTAL DAMAGE.

2. Drill two 1/4" dia. (0.250") holes in the locations marked. The drilled holes will pass through the cover and also through a 0.50" X 1.00" rectangular tube below the cover. Deburr as necessary.
3. Fasten the striker to the cover with two 1/4-20 X 1 1/8" stainless, socket type button head screws, flat washers and nylon lock nuts.
4. Refer to **Figure [2]** for an illustration of the latch in position on the enclosure door. Fasten the latch to the door with 10-24 X 3/8" Phillips pan head screws, flat washers and nylon lock nuts.



FIGURE [2]: LATCH LOCATION

B. LATCH ASSEMBLY - DODGE

1. Refer to **Figure [3]** for an illustration of the bracket portion of the latch assembly. The bracket is located on the top front of the enclosure, just to the right of the enclosure centerline. The bracket will be used as a template for the holes to be drilled. Center the bracket between the hex bolt head and hex nut as shown. Position the bracket so that the centerline between it's two mounting holes is offset 1/4" (0.250") towards the front of the lift as shown. Mark the enclosure.

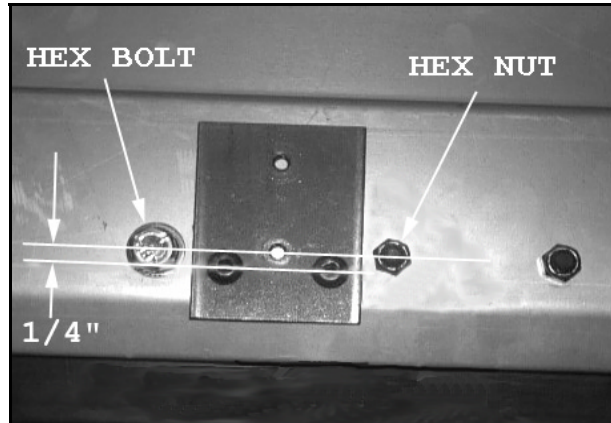


FIGURE [3]: BRACKET LOCATION

▲ CAUTION

CHECK AREA BEHIND PART BEING DRILLED TO AVOID ACCIDENTAL DAMAGE.

2. Drill two 1/4" dia. (0.250") holes in the locations marked. The drilled holes will pass through the cover and also through a 0.50" X 1.00" rectangular tube below the cover. Deburr as necessary.
3. Fasten the bracket to the cover with two 1/4-20 X 1 1/8" stainless, socket type button head screws, flat washers and nylon lock nuts.
4. Refer to **Figure [4]**. Fasten the latch to the bracket with two 10-24 X 3/8" Phillips pan head screws and split type lock washers. The washers are placed under the screw heads.
5. Refer to **Figure [5]** for an illustration showing the location of the striker on the enclosure door. Fasten the striker to the cover with two 1/4-20 X 1 1/8" stainless, socket type button head screws, flat washers and nylon lock nuts.

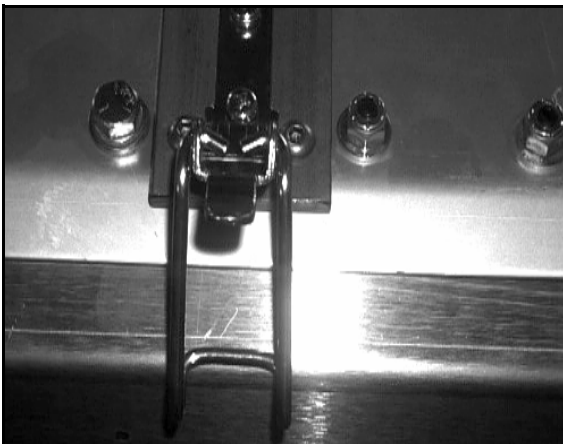


FIGURE [4]: LATCH BRACKET



FIGURE [5]: LATCH AND STRIKER

6. Refer to **Figure [6]** for an illustration of the enclosure door showing the location of the four license plate mounting holes. Use the dimensions given to layout the pattern.
7. Drill four 1/4" dia. holes and deburr as necessary.
8. Fasten the license plate to the door with four 1/4-20 X 1 1/8" stainless button head screws, 0.50" spacers, flat washers and nylon lock nuts.

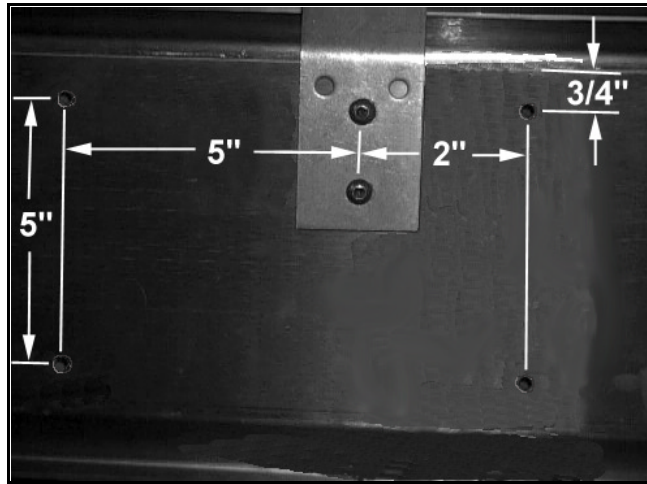


FIGURE [6]: LICENSE PLATE MOUNTING HOLES

C. ENCLOSURE DOOR INSTALLATION

1. Refer to **Figure [7]** for an illustration showing the attachment location (pivot point) for the enclosure door. The hole shown is in the enclosure's side channel, and it will have a plastic plug bonded into it. Remove the plug.
2. Refer to **Figure [8]** for an illustration showing the hardware arrangement that fastens the enclosure door to the side channel. Insert the hex bolts from the interior of the enclosure and then assemble the remaining hardware as shown.
3. Test the door for free movement and secure latching.

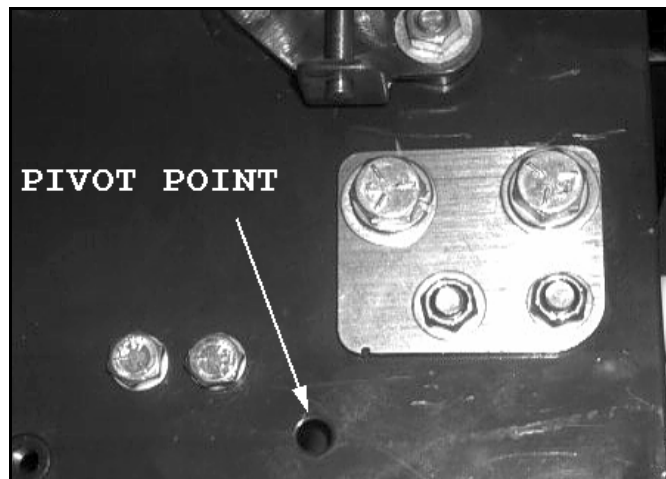


FIGURE [7]: ENCLOSURE DOOR ATTACHMENT LOCATION

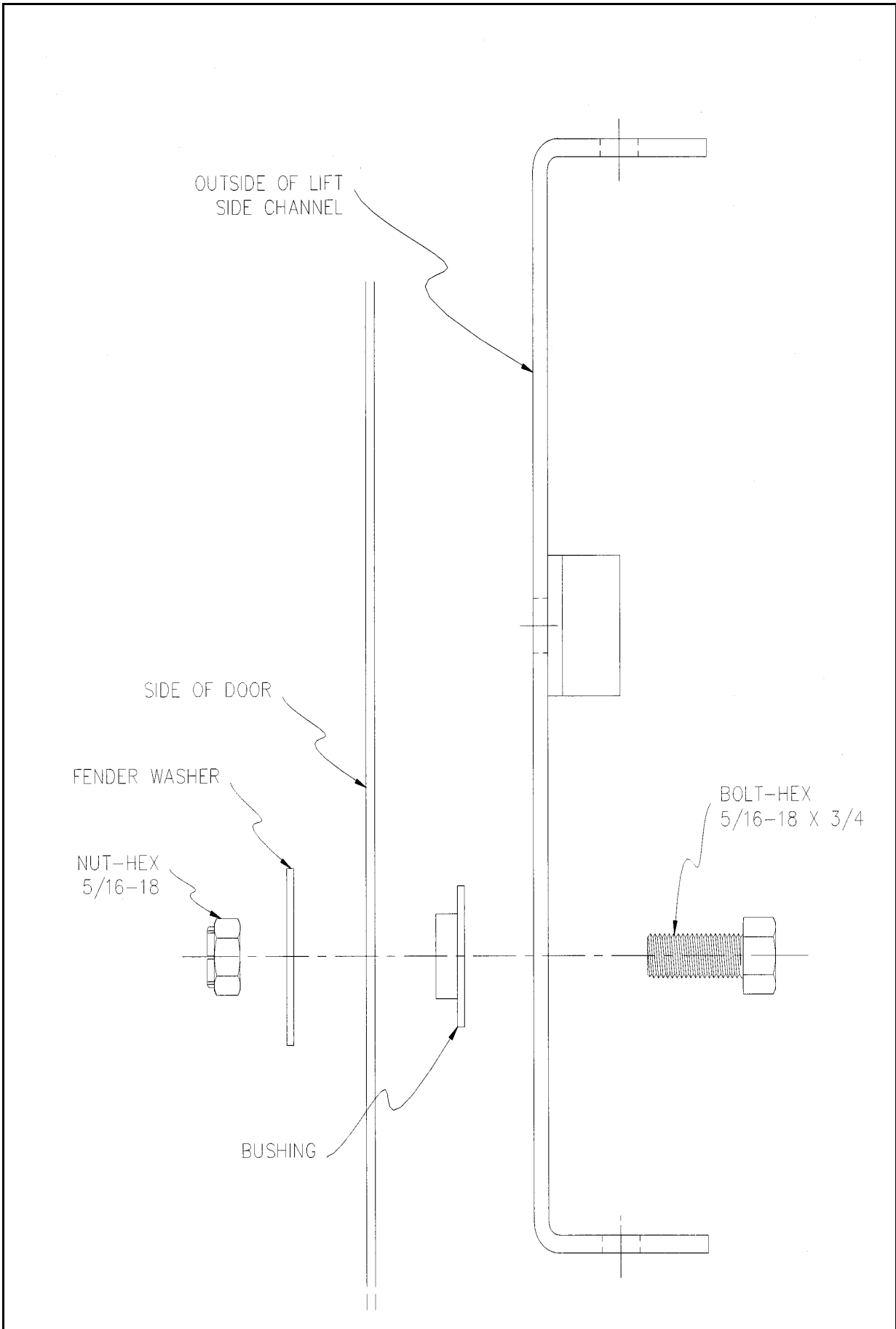
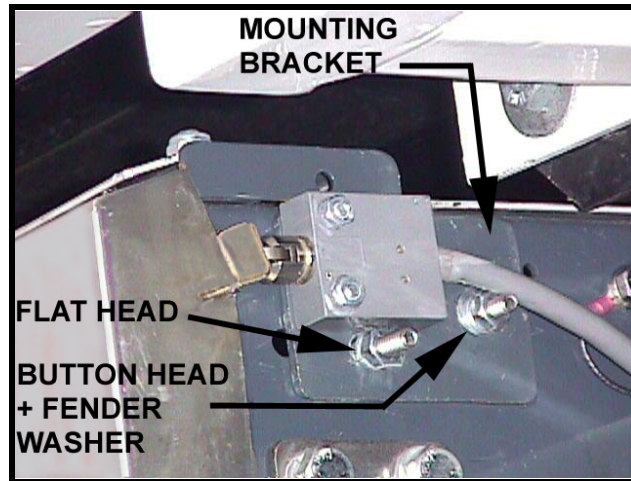


FIGURE [8]: ENCLOSURE DOOR PIVOT HARDWARE

D. INTERLOCK SWITCH KIT INSTALLATION

1. Refer to **Figure [9]**. Fasten switch to mounting plate with two 10-24 x 1.0" flat head screws and nylon lock nuts.



**FIGURE [9]: INTERLOCK SWITCH
INSTALLED**

2. Fasten mounting plate to right side of lift enclosure with one 1/4-20 x 0.75" flat head screw, one 1/4-20 x 1.0" button head screw, one fender washer, two flat washers and two nylon lock nuts. The hole for the flat head screw is countersunk on the inside of the enclosure, and the button head screw installs through a 0.50" diameter hole. Place a 1/4" fender washer under the head of the button head screw.
3. Close and latch the door. Adjust the position of the mounting plate so that the switch is actuated with door fully closed. Tighten hardware (this may require marking of mounting plate position and then opening door to gain access to screws).
4. Refer to vehicle specific instructions for routing and connection of the switch's electrical cable.