



INSTALLATION INSTRUCTIONS CHAIN GUIDE RETROFIT, KIT #01264 FOR UNI-LITE LIFTS

- Be certain that these supplemental instructions are read and understood completely before installation is attempted. Please refer to the Service/Owner Manual for additional installation instructions.
- Check contents of this kit and notify Ricon immediately of any missing parts. Claims for damages that have occurred during shipping must be made to the shipper.

TABLE OF CONTENTS	PAGE
I. TOOLS REQUIRED	1
II. DISASSEMBLY PROCEDURE	1
III. CHAIN GUIDE INSTALLATION	2
IV. REASSEMBLY PROCEDURE	4

I. TOOLS REQUIRED

Combination Square	17/64" Drill Bit	3/8" Drill Motor
1/8" Drill Bit (or Center Drill)	Center Punch (or Hammer/Mallet with Punch)	

II. DISASSEMBLY PROCEDURE

A. LIMIT SWITCH COVER REMOVAL (SEE FIGURE [1]):

- Remove screw mounting the Limit Switch Cover and Clamp to the Platform Post, and remove Cover from lift.

B. LIMIT SWITCH REMOVAL (SEE FIGURE [1]):

- Remove two (2) screws mounting the "DOWN" and "FOLD" Limit Switches to the Platform Post.

III. CHAIN GUIDE INSTALLATION

A. PLATFORM POST PREPARATION:

1. Mark a line on the left face of the Platform Post (near the bend radius) relative to the bottom of the pin keeper hole (see FIGURE [2]).
2. Using a combination square set at 7/8" (0.875"), place 90° edge of square along left face of Platform Post at line marked in step 1, and mark a centerline onto front face of Platform Post (see FIGURE [2]).
3. Move combination square to the opposite face of the Platform Post and mark centerline again to verify actual center.
4. Obtain template (p/n UL-AC-072T) from Installation Kit.

5. Align top edge of template with bottom of pin keeper hole. The top edge should meet the line marked in step 1.
6. Align large arrows of template with marked centerline on the front face of Platform Post, and secure with tape (see FIGURE [3], A). Fold the template's left and right faces over onto Platform Post, and continue to secure template with tape at locations shown in FIGURE [3], A, B, and C.

B. MODIFY PLATFORM POST:

1. Center-punch Platform Post at the four template hole locations shown in FIG. [3], B AND C.



2. Drill through each center-punch mark using a 1/8" drill bit.
3. Drill through each 1/8" dia. hole using a 17/64" drill bit.
4. Remove any burrs or sharp edges with a deburring tool. Be sure to remove any metal shavings that may have falling into surrounding pivot point areas or nearby electrical wires.

C. CHAIN GUIDE ASSEMBLY:

1. Assemble Chain Guide Bushings (4 ea.) to Chain Guide (see FIGURE [4]).
2. Install and secure Chain Guide with Bushings to Platform Post using fasteners shown in FIGURE [4]. Be sure to install bolts with heads facing toward the inside of the lift.

III. REASSEMBLY PROCEDURE

A. REPLACE "DOWN" LIMIT SWITCH (REF. FIGURE [1]):

1. With the aid of a pair of needle nose pliers, carefully grasp and remove each spade connector attached to the terminals of the "DOWN" limit switch to be replaced. Remove limit switch from lift.
2. Reattach each spade connector removed from the "old" limit switch to the corresponding terminal on the replacement limit switch.
3. Install replacement Limit Switch to the Platform Post using screws (2 ea.) shown in FIGURE [1].

NOTE: Be sure to mount replacement limit switch with the level actuator pointing downward (ref. FIGURE [1]).

4. If limit switch adjustment is required, follow the "DOWN" Limit Switch Adjustment procedure in the UNI-lite Installation/Service Manual.

WARNING

The lift will operate properly only when the limit switches are correctly adjusted. Failure to adjust limit switches properly can cause damage to the lift, as well as create a potentially dangerous situation for the lift user.

B. REINSTALL LIMIT SWITCH COVER:

- Reposition Clamp and reinstall Limit Switch Cover to the Platform Post using mounting screw shown in FIGURE [1].

IV. VERIFY INSTALLATION

- A. Be certain Chain Guard protects Limit Switches and ensures their proper operation.
- B. Upon completion of installation, the lift **must** be run through several cycles to ensure proper operation.
- C. Be certain there is no interference with operation of the lift by interior or exterior components, etc.).

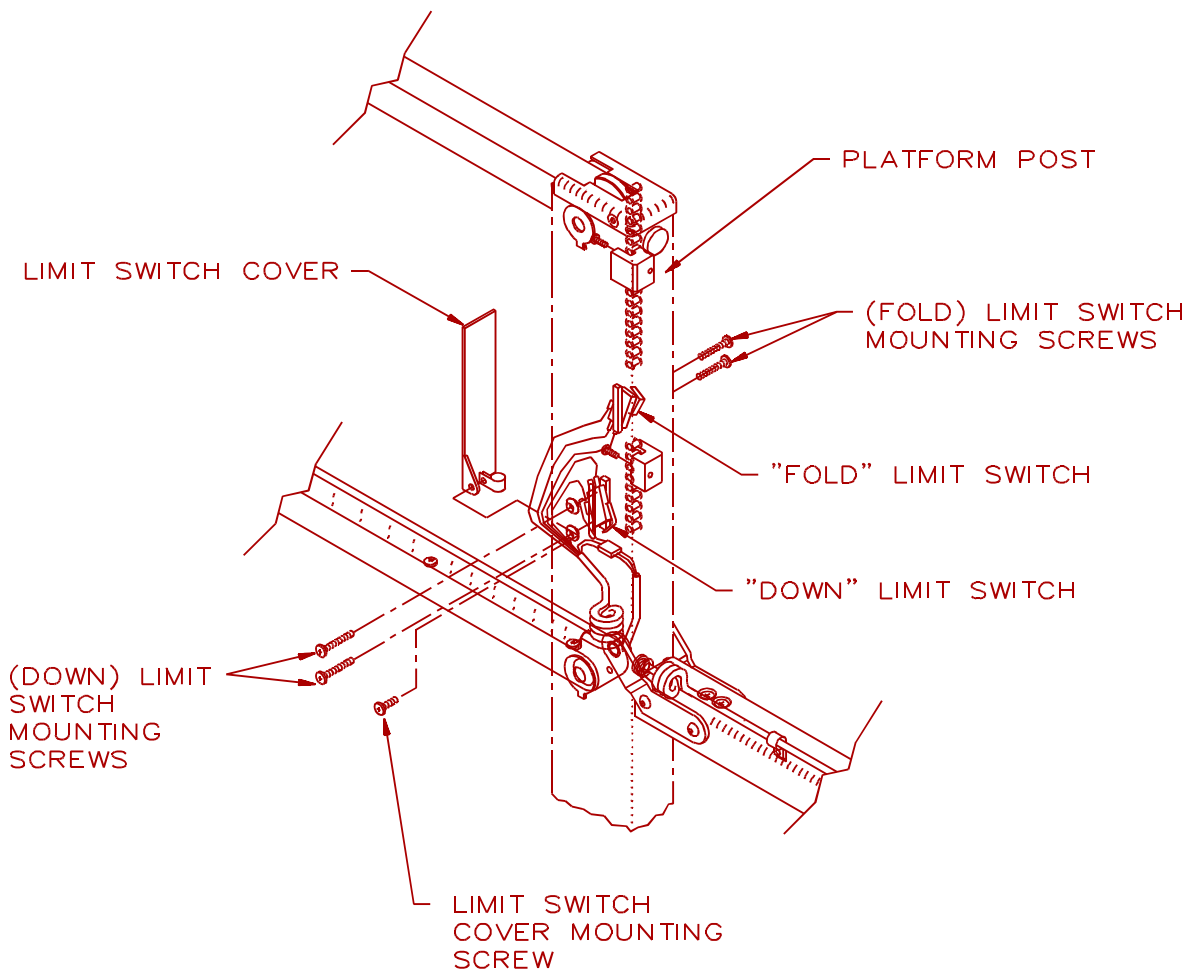


FIGURE [1]

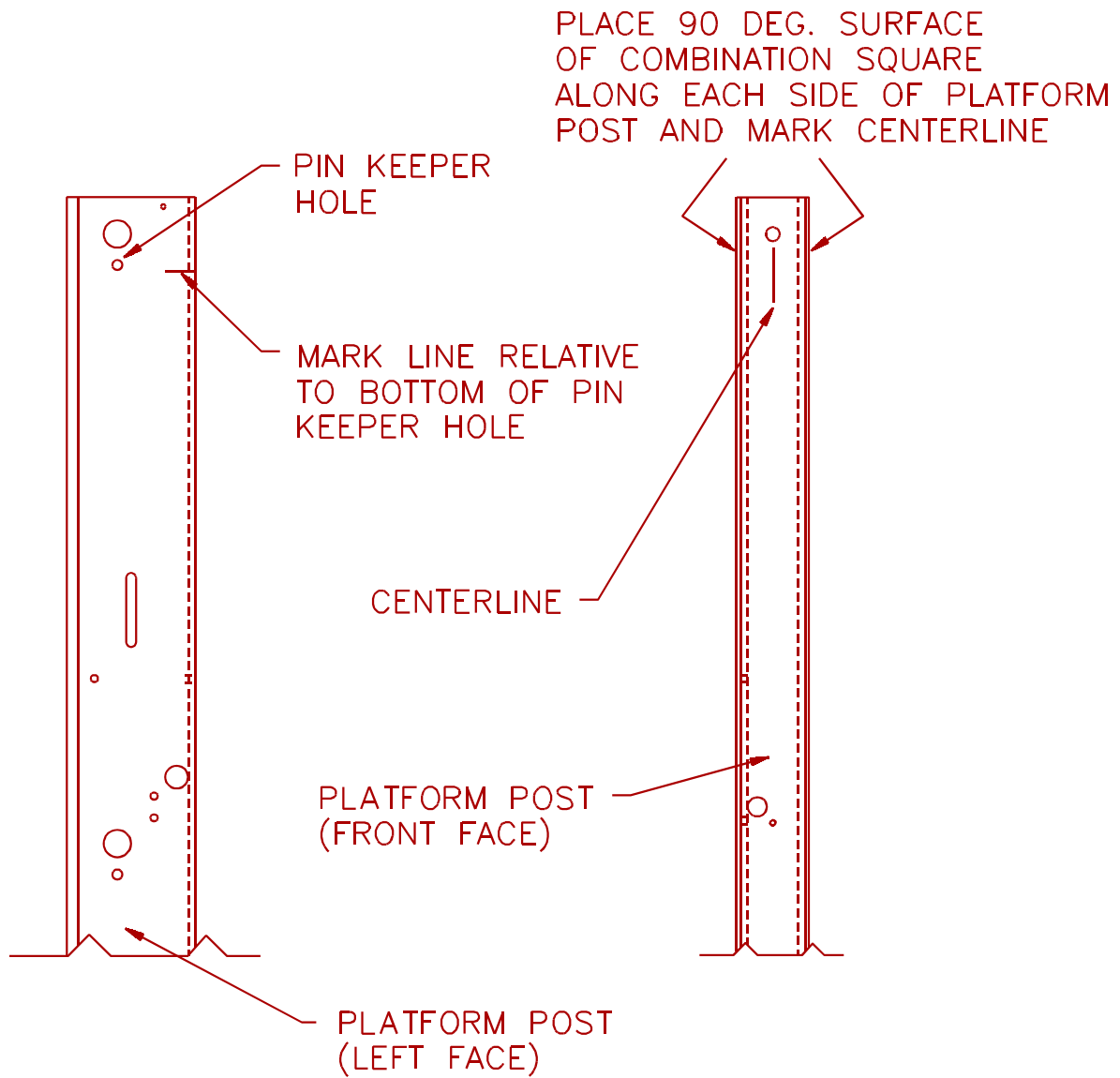


FIGURE [2]

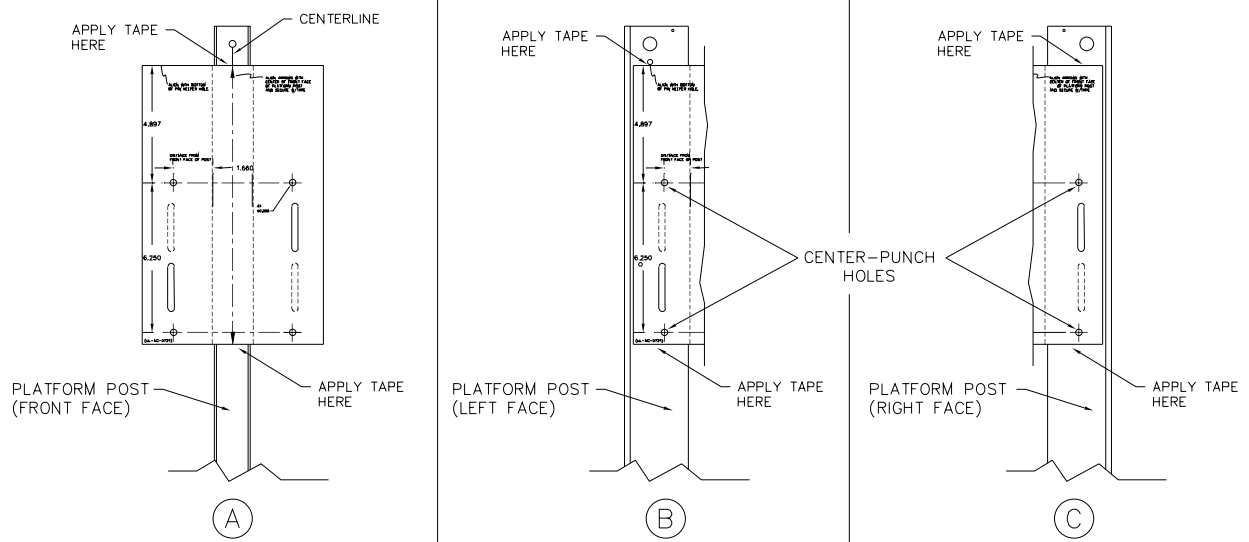


FIGURE [3]

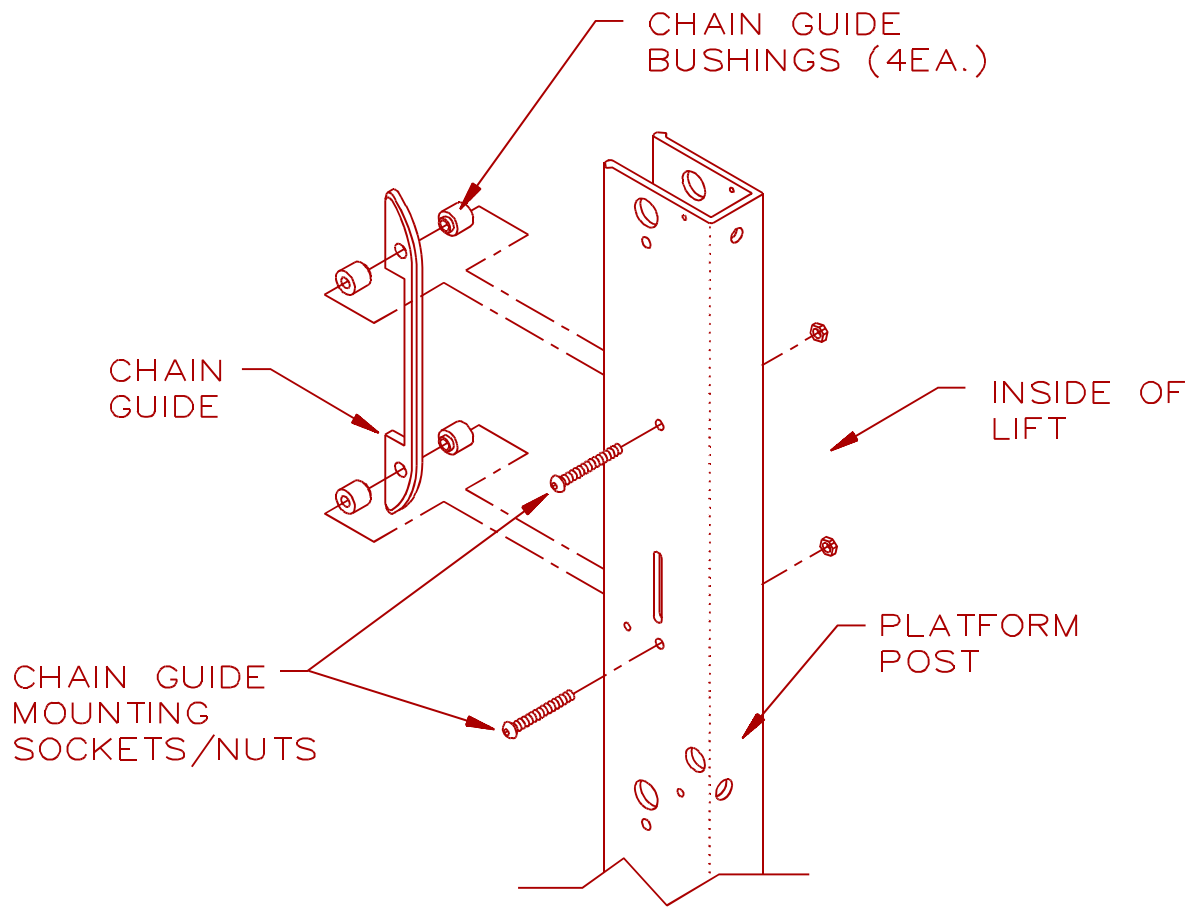


FIGURE [4]: CHAIN GUIDE ASSEMBLY

RICON CORPORATION

TOP LEVEL PACKING LIST FOR 01264

LEVEL	PART #	QTY.	DESCRIPTION
0	01264	1.000	KIT, INSTALLATION, GUIDE CHAIN, UNILITE
-1	UL-AC-072	1.000	GUIDE, CHAIN
-1	UL-AC-073	4.000	BUSHING, CHAIN GUIDE
-1	14-08-304	2.000	NUT-HEX 1/4-20 PLATED THIN NYLON
-1	28161	2.000	SOC. BUTTON, 1/4-20 X 2
-1	UL-ES-110	1.000	SWITCH, LIMIT, (UP/DOWN CUT-OFF) UNILITE
-1	UL-AC-072T	1.000	TEMPLATE, GUIDE CHAIN
-1	32ii112e	1.000	INSTALLATION INSTRUCTION, UNILITE GUIDE CHAIN #01264
-1	01264	1.000	BAG ZIP-LOCK 9 X 12