



# INSTALLATION INSTRUCTIONS

## PHASE 3 SWIVEL MOTOR RETROFIT KIT# 1002 R-1208 POWER SEAT BASE; FROM S/N 73,100 TO S/N 74,999

- Read and understand these supplemental instructions completely before installation is attempted. Refer to the Service/Owner Manual for additional installation instructions and safety precautions.
- Check contents of kit. Immediately notify Ricon of any missing parts. Claims for damages that have occurred during shipment must be made to the shipper.

<b>TABLE OF CONTENTS</b>	<b>PAGE</b>
I. TOOLS REQUIRED .....	1
II. DISASSEMBLY .....	1
III. REASSEMBLY .....	1
IV. VERIFY OPERATION .....	2

### I. TOOLS REQUIRED

- |                  |                  |                         |
|------------------|------------------|-------------------------|
| 3/16" Hex Wrench | Snap Ring Pliers | #2 Phillips Screwdriver |
| 3/8" Wrench      | Small Grinder    | 1/2" Wrench             |

### II. DISASSEMBLY

- A. Remove the seat (if attached)
- B. Raise the seat base all the way up. Activate the up switch to raise seat base.
- C. Remove the electrical plug from swivel motor.
- D. Refer to Figure [1] #26 and #2. Remove the retaining ring from the swivel plate weld assembly.

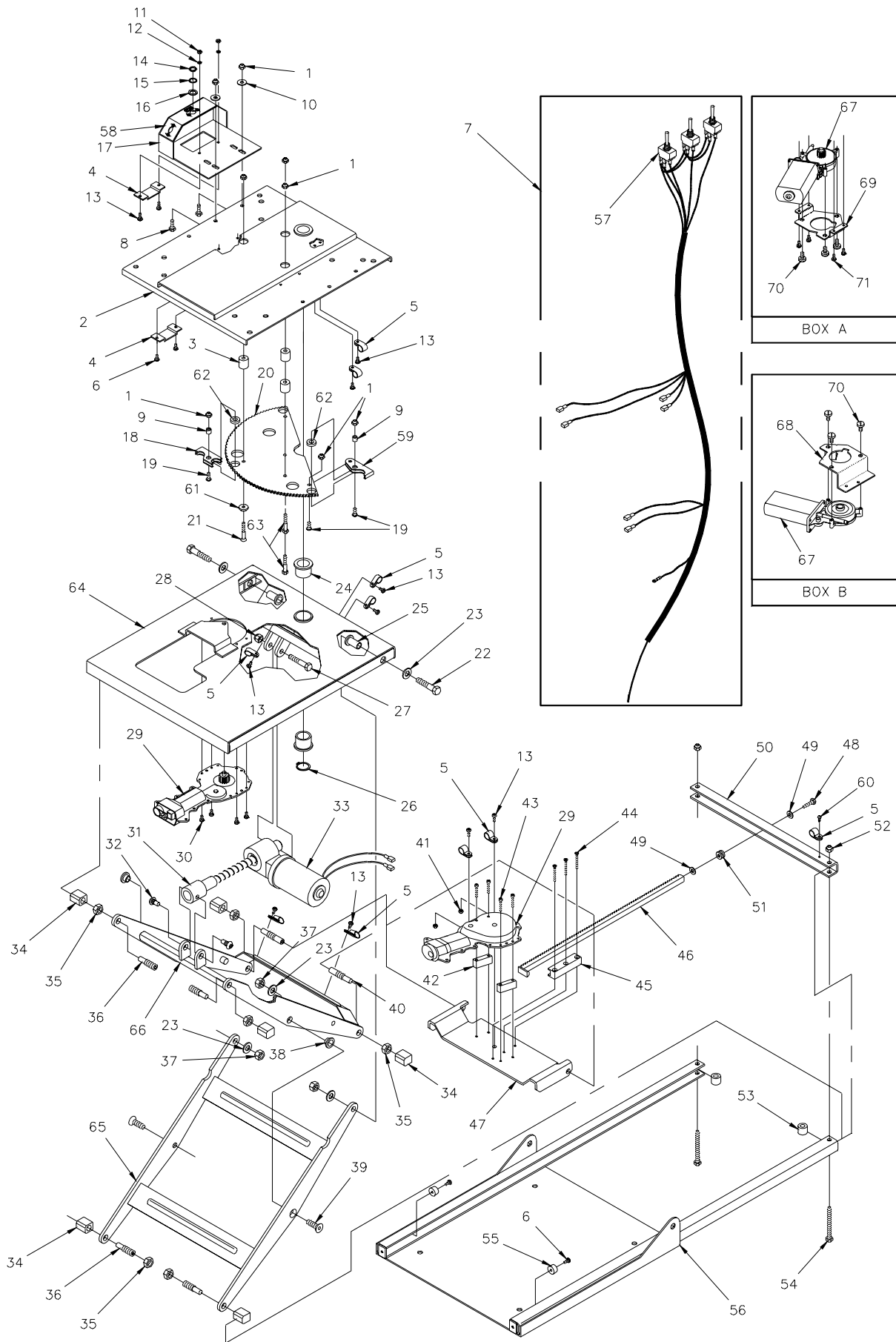


FIGURE [1]

- E. Refer to Figure [1] #17 and #2. Remove the toggle control box assembly from the swivel plate weld assembly.
- F. Refer to Figure [1] #4 and #64. Remove the two flat plastic clamps from the upper frame assembly near the bottom of the swivel post.
- G. Refer to Figure [1] #2. Remove the swivel plate by pulling straight up and gently twisting back and forth.
- H. Refer to Figure [1] #29. Remove the swivel motor.

### III. Reassembly

- A. Refer to Figure [2]. Modify swivel plate to clear the new swivel motor. Use a small grinder to clearance the upper frame assembly.

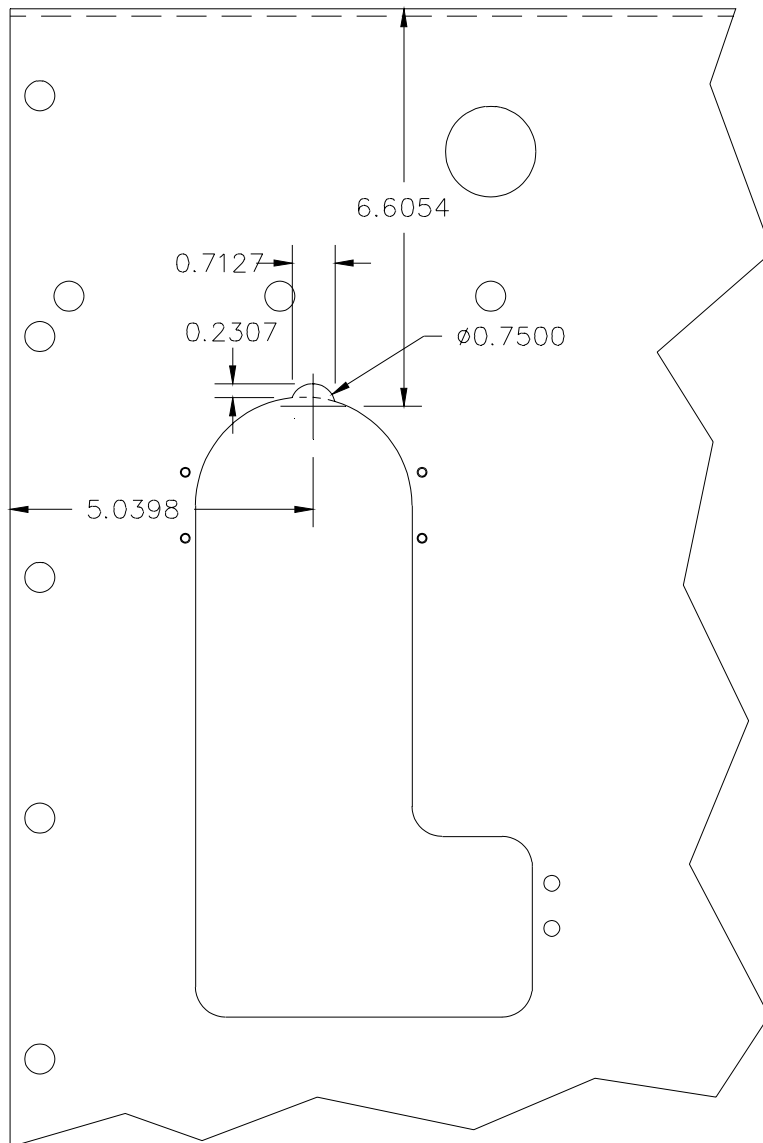


FIGURE [2]

- B. Refer to figure [1], box A. Assemble new Delco motor to bracket. Use the 5/16" bolts provided in the kit.
- C. Refer to step I. H. Slide the motor and bracket assembly into position from below. Mount to the upper frame assembly using the mounting screws removed earlier.

- D. Refer to Figure [1] reinstall the swivel plate to the upper frame assembly.
  - 1. Refer to Figure [1] #24. Verify the upper and lower swivel bearings are in position.
  - 2. Refer to Figure [1] #26. Reinstall the retaining ring.
- E. Reconnect electrical plug to new motor.

#### **IV. Verify Operation**

Operate all seat base functions to prove correct operation.