



INSTALLATION INSTRUCTIONS
S-SERIES & K-SERIES INSTALLATION KIT #58332 FOR
2012+ CHEVY, SIDE DOOR INSTALLATION

- Be certain that these supplemental instructions are read and understood completely before installation is attempted. You should also refer to the Service/Owner Manual for additional installation instructions and safety precautions.
- Check contents of this kit and notify Ricon immediately of any missing parts. Claims for damages that have occurred during shipping must be made to the shipper.
- Public use vehicle manufacturers are responsible for complying with the lift lighting requirements in Federal Motor Vehicle Safety Standard No. 404, Platform Lift Installations in Motor Vehicles (49 CFR 571.404).

TABLE OF CONTENTS	PAGE
I. INTRODUCTION	1
II. S-SERIES AND K-SERIES LIFT INSTALLATION	2
III. SAFETY CHECKLIST FOR VEHICLE MANUFACTURER	5

- Under no circumstances is maintenance, repair, or adjustment of the product to be performed without the presence of an individual capable of giving aid.
- This lift is driven with hydraulic pressure generated by a hydraulic pump system. The fluid is highly pressurized and possibly very hot. Use extreme caution when doing maintenance and repairs. **DO NOT** disconnect hoses or fittings when lift is in motion.
- Give immediate attention to all injuries, and administer first-aid, or seek medical attention as necessary.
- Protective eye shields and clothing should be worn during maintenance, repair, and adjustment of the lift.
- Work in a properly ventilated area.
- Check for hidden obstructions before drilling and cutting. Avoid interference with wiring, fuel tank, fuel lines, hydraulic lines, subfloor members, etc.
- Read and understand all instructions before attempting to operate the product.
- Read and understand all instructions before attempting to perform maintenance, repairs, or adjustments to the product.
- Read and comply with warning labels attached to lift.
- Refer to S-Series & K-Series Service Manual for part numbers of replacement parts mentioned here.

I. INTRODUCTION

The following instructions are intended to cover installation of S-Series & K-Series lift in through the side entry of Chevy vans 2012 and newer.

NOTE: Remove power to the lift prior to commencing installation.

A. TOOLS REQUIRED

Drill with 1/4" and 25/64" drill bit
Marker
Torque Wrench
Wrench

B. PARTS REQUIRED

Kit P/N: R58332

II. S-SERIES & K-SERIES LIFT INSTALLATION

A. MECHANICAL INSTALLATION

1. LIFT LOCATION

The installation surface must be flat and level. It is recommended that lift be installed on a ½", minimum, high grade plywood sub-floor.

NOTE: Be certain to check for proper travel clearance through doorway.

2. LIFT INSTALLATION GUIDELINES

The mounting of lift is a very important step. Lift performance can be greatly affected by improper mounting and/or fastening of lift. Although fastening details may vary from one vehicle to the next, some general principles always apply:

- Be certain that all mounting bolts are properly installed and tightened. Bolts used to fasten baseplate assembly to vehicle floor should be equivalent to or greater than a strength rating of SAE Grade 5 and torqued to 28 ft. lbs., dry. Always remember that the most important bolts are those at rear of lift, since these bolts retain most of load.
- Refer to **FIG [1]**. Improper fastening sequence or torquing of bolts may result in a warped or buckled baseplate and, therefore, cause lift to operate unevenly.

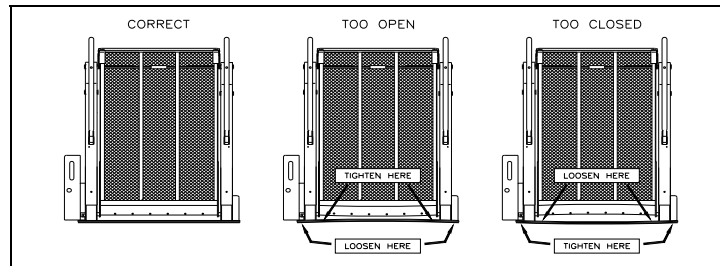


FIG [1]: PLATFORM MOUNTING

3. LIFT INSTALLATION INTO VAN

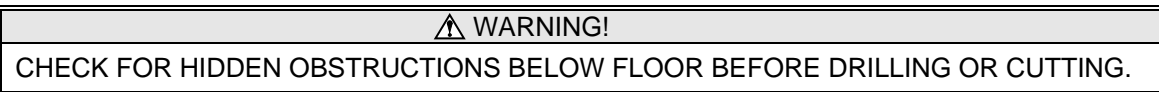


FIG [1]: PLATFORM MOUNTING

- Refer to **FIG [2]**. On some van installations, clamping bars should be used to help distribute floor loading and should only be cut if needed to clear a subframe member. A subframe member should be used to support clamping bar.

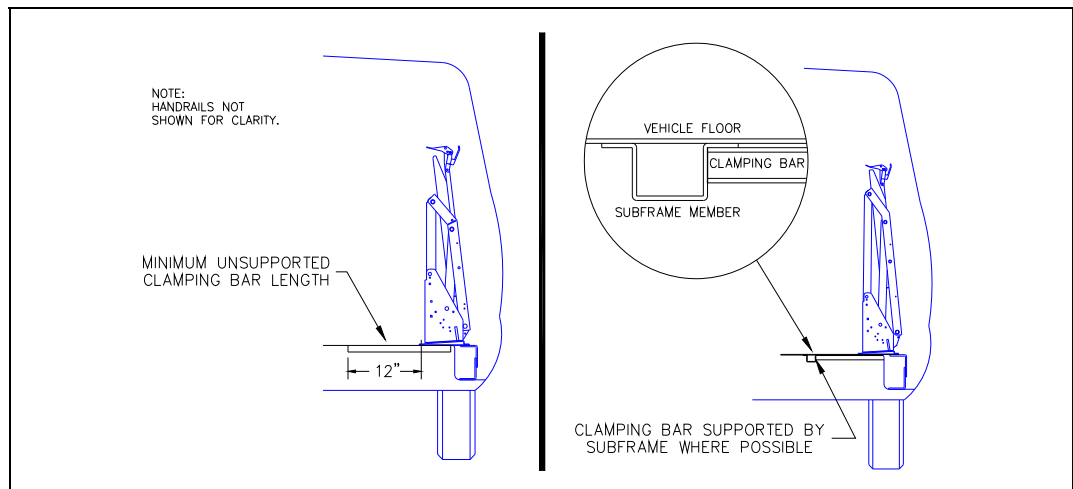


FIG [2]: CLAMPING BAR ARRANGEMENT

- a. Refer to **FIG [3]**. Using four 1" x 3/8" bolts, 3/8" washers, 3/8" lock washers and 3/8" hex nuts, assemble two bracket assembly kits.

NOTE: The top bracket must overlap bottom bracket, and both slots must face outward.

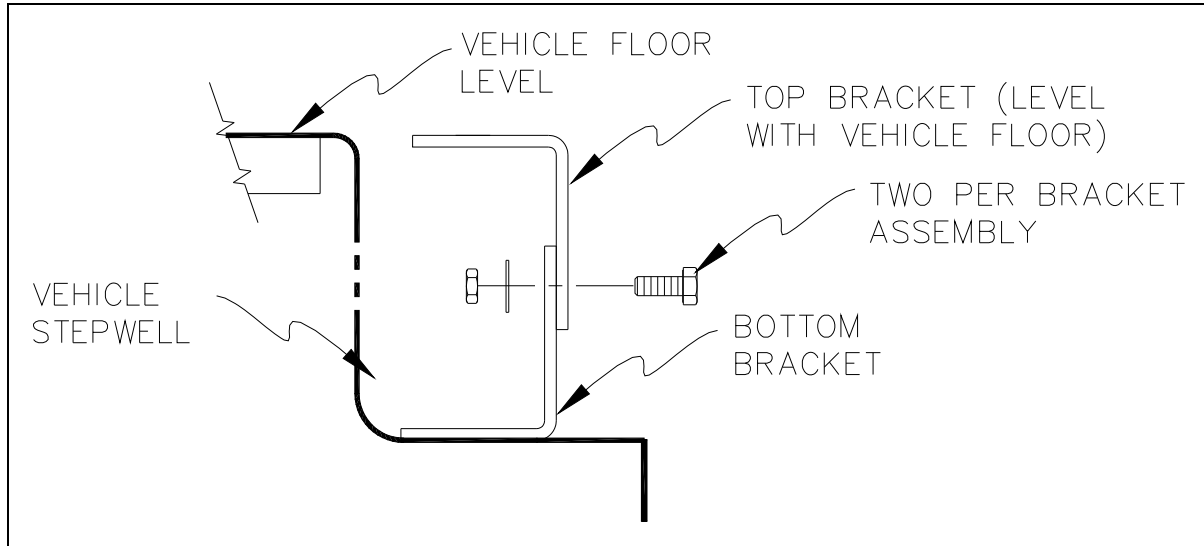


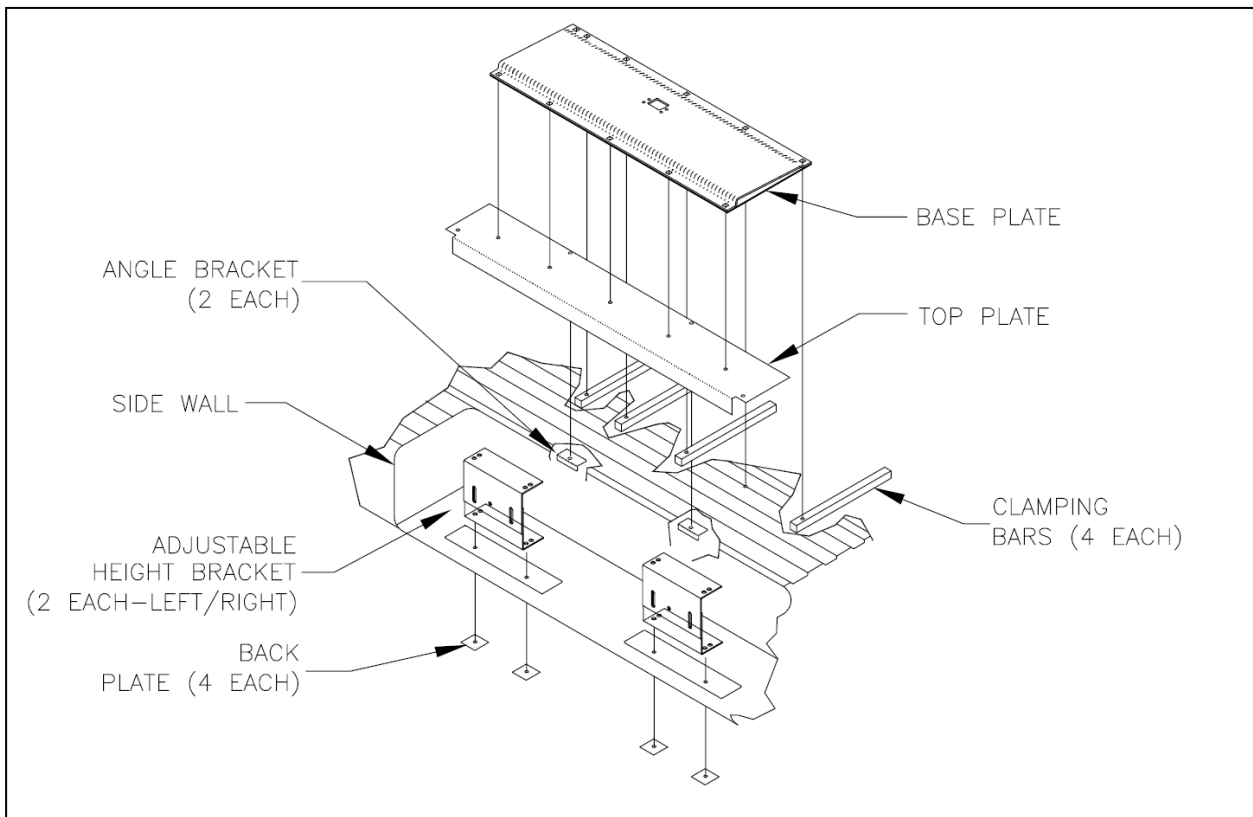
FIG [3]: STEPWELL BRACKET

- b. Position and adjust height of both bracket assemblies so that top bracket is level with vehicle floor. Tighten bracket assembly bolts.
- c. Ensure that lift is fully closed with handrails folded tight against vertical arms. If necessary, use manual pump.

CAUTION

LIFT WEIGHT IS APPROXIMATELY 350–375 LBS. TAKE EXTREME CARE WHEN POSITIONING, BRACKETS MAY TIP. DO NOT POSITION ALONE. THIS PROCEDURE SHOULD NOT BE ATTEMPTED BY ONE PERSON.

- d. Place top plate so that inboard portion rests on vehicle floor
- e. Support outboard edge of top plate with stepwell brackets on both ends. Align bracket corner with top plate corner.
- f. Refer to **FIG [4]**. With door(s) fully open, position lift in vehicle doorway so that back is supported by vehicle floor and front is supported by both bracket assemblies.



- g. Position top plate so that holes align with those in front edge of baseplate.
- h. Adjust Base Assembly:
 - 1) Be certain baseplate assembly is parallel with vehicle floor. The baseplate assembly may be slightly offset in door opening to provide proper clearance for passenger seats.
 - 2) Before drilling, be certain that lift's position does not interfere with closing of vehicle door(s) as well as clear all passenger seats.
- i. Mark/Drill Holes:

NOTE: Before drilling any holes, be sure that no underlying wires or tubes are in the way.

 - 1) Mark four stepwell bracket installation holes using the positioned stepwell brackets as a template/guide
 - 2) Refer to **FIG [5]**. Mark four baseplate assembly mounting holes (1, 2, 3 and 4) through vehicle floor (in some cases, you must drill through vehicle floor and subframe).

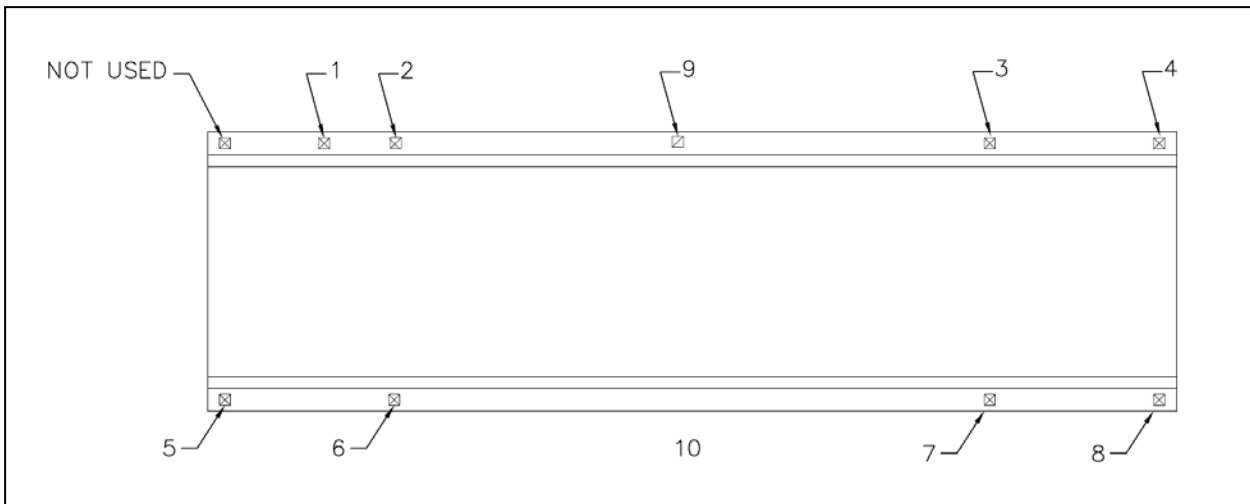


FIG [5]: VAN BASEPLATE HOLES

- 3) Remove lift and brackets
- 4) Using marks, drill four 1/4" stepwell bracket installation holes
- 5) Using marks, drill four 25/64" baseplate installation holes
- g. Fasten Bracket Assemblies/Lift:
 - 1) Using 1-1/2" x 5/16" sheet metal screws with 5/16" lock washers, secure lower brackets to vehicle step holes.
 - 2) Reposition top plate and lift by aligning the corresponding holes.
 - 3) Insert four 8" x 3/8" carriage bolts through mounting holes at rear of baseplate assembly
 - 4) Drill any/all required 25/64" holes in top side of stepwell brackets (using mounting holes along front edge of baseplate/top plate as template or guide).
 - 5) Insert four 1-1/2" x 3/8" carriage bolts through baseplate, top plate and (if applicable) bracket assemblies. Place 3/8" washers, lock washers, and nuts under bracket assemblies, and finger tighten nuts.
 - 6) Reinforce vehicle floor with clamping bars. They are to be bolted in positions 1, 2, 3 and 4 and run across width of baseplate towards center of van.
 - 7) Refer to **FIG [6]**. Install carriage 3/8" carriage bolts as required to accommodate brackets as shown. Install 3/8" washers, lock washers, and nuts on each carriage bolt, and finger tighten nuts.

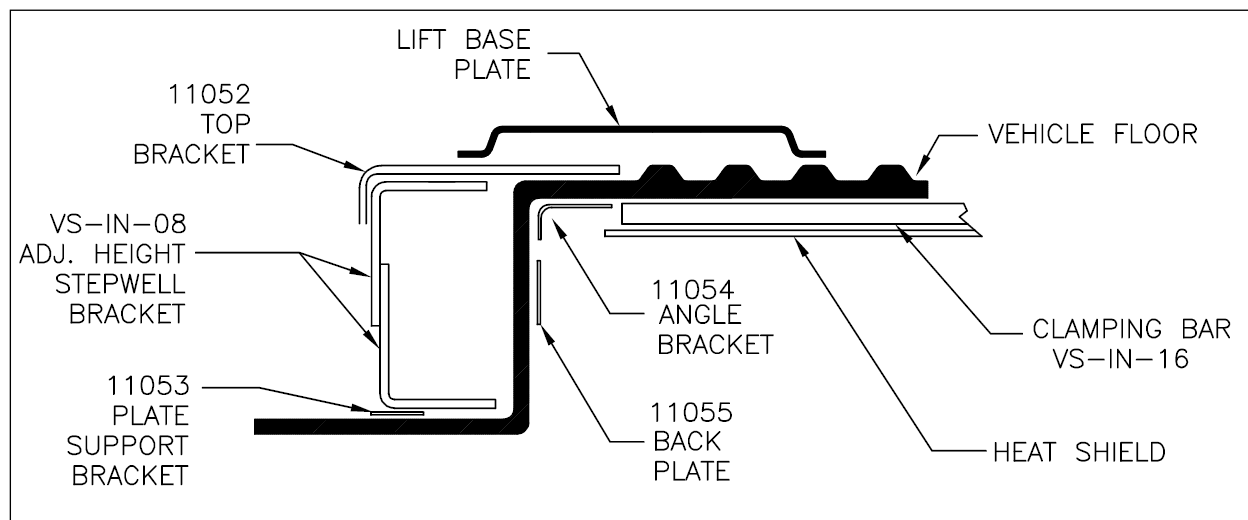


FIG [6]: BRACKET PLACEMENT

- 8) Before tightening carriage bolts, verify that lift is level with vehicle floor. Adjust bracket assembly bolts if necessary.
- 9) Tilting lift towards inside of van may hinder its initial unfolding. Install lift with its baseplate assembly as level as possible. Tightening carriage bolts requires special care to keep baseplate assembly from warping when secured to vehicle floor. If baseplate assembly warps, the vertical arms will not be parallel. Corrections can be made by shimming at appropriate locations. To help prevent warping, tighten the eight carriage bolts to 28 ft. lbs. in the following sequence:

2, 3, 6, 7, 1, 4, 5, 8

NOTE: Vertical Arms must be parallel for proper operation. Adjust bolts as required. Best results are obtained when lift is mounted on plywood. Shims, although best avoided, may be used if required.

III. SAFETY CHECKLIST FOR VEHICLE MANUFACTURER: S/K-SERIES MODELS

This checklist is intended to verify safe operation of Ricon FMVSS 403 and 404 compliant wheelchair lifts.
All items must comply for the wheelchair lift to be considered compliant.

COMPLIANT	NON-COMPLIANT	SAFETY ITEM
		Wheelchair lift and vehicle properly interlocked (lift cannot be powered unless vehicle interlocks are activated, and interlocks cannot be disengaged unless lift is fully stowed).
		Threshold warning device functioning properly (audible warning and visual warning is activated if threshold area is entered when platform is at least one inch below vehicle floor level).
		Main power switch enables and disables the lift control system.
		Control pendant illuminated when the lift is powered and pendant power turned on.
		Inboard rollstop does not rise from floor level with 25 pounds, or more, at center of barrier.
		Platform unable to raise more than 3" above ground if the restraint belt is not engaged.
		Platform lighting functional when lift is powered.
		Platform does not stow if a weight of 50 pounds, or more, is present on platform.
		Manual back-up operation fully functional (see operator manual for directions).

A. RATED LOAD CAPACITY OF INSTALLATION BY LIFT MODEL

NOTE: THE RATED LOAD CAPACITY OF AN INSTALLATION IS DEFINED AS THE LESSER OF THE FOLLOWING TWO VALUES: RATED LOAD CAPACITY OF LIFT BEING USED, AND RATED LOAD CAPACITY OF INSTALLATION KIT BEING USED.

MODEL	RATED LOAD CAPACITY, MAX
ST00 & ST01 (SLIDE-AWAY™)	600 POUNDS (272KG)
S/K 1100 SERIES – DOT PRIVATE USE	600 POUNDS (272KG)
S/K 1100 SERIES – PERSONAL USE	800 POUNDS (364KG)
S/K 1200 SERIES – DOT PRIVATE USE	600 POUNDS (272KG)
S/K 1200 SERIES – DOT PRIVATE USE	800 POUNDS (364KG)
S/K 2000 SERIES – DOT PUBLIC USE	800 POUNDS (364KG)
S/K 5000 SERIES – DOT PUBLIC USE	800 POUNDS (364KG)
S/K 5500 SERIES – DOT PUBLIC USE	800 POUNDS (364KG))
S/K 2000FF SERIES (TITANIUM™)	1000 POUNDS (454KG)
S/K 5000FF SERIES (TITANIUM™)	1000 POUNDS (454KG)

NOTES