



INSTALLATION INSTRUCTIONS S-SERIES & K-SERIES INSTALLATION KIT #57890 FOR 2015 FORD TRANSIT, SIDE DOOR INSTALLATION

- Be certain that these supplemental instructions are read and understood completely before installation is attempted. You should also refer to the Service/Owner Manual for additional installation instructions and safety precautions.
- Check contents of this kit and notify Ricon immediately of any missing parts. Claims for damages that have occurred during shipping must be made to the shipper.
- Public use vehicle manufacturers are responsible for complying with the lift lighting requirements in Federal Motor Vehicle Safety Standard No. 404, Platform Lift Installations in Motor Vehicles (49 CFR 571.404).

TABLE OF CONTENTS	PAGE
I. INTRODUCTION	1
II. S-SERIES AND K-SERIES LIFT INSTALLATION	2
III. SAFETY CHECKLIST FOR VEHICLE MANUFACTURER	5

- Under no circumstances is maintenance, repair, or adjustment of the product to be performed without the presence of an individual capable of giving aid.
- This lift is driven with hydraulic pressure generated by a hydraulic pump system. The fluid is highly pressurized and possibly very hot. Use extreme caution when doing maintenance and repairs. DO NOT disconnect hoses or fittings when lift is in motion.
- Give immediate attention to all injuries, and administer first-aid, or seek medical attention as necessary.
- Protective eye shields and clothing should be worn during maintenance, repair, and adjustment of the lift.
- Work in a properly ventilated area.
- Check for hidden obstructions before drilling and cutting. Avoid interference with wiring, fuel tank, fuel lines, hydraulic lines, subfloor members, etc.
- Read and understand all instructions before attempting to operate the product.
- Read and understand all instructions before attempting to perform maintenance, repairs, or adjustments to the product.
- Read and comply with warning labels attached to lift.
- Refer to S-Series & K-Series Service Manual for part numbers of replacement parts mentioned here.

I. INTRODUCTION

The following instructions are intended to cover installation of

NOTE: Remove power to the lift prior to commencing installation.

A. TOOLS REQUIRED

Drill with 7/16" drill bit
Marker
Torque Wrench
Wrench

B. PARTS REQUIRED

Kit P/N: R57890

II. S-SERIES & K-SERIES LIFT INSTALLATION

A. MECHANICAL INSTALLATION

1. LIFT LOCATION

The installation surface must be flat and level. It is recommended that lift be installed on a ½", minimum, high grade plywood sub-floor.

NOTE: Be certain to check for proper travel clearance through doorway.

2. LIFT INSTALLATION GUIDELINES

The mounting of lift is a very important step. Lift performance can be greatly affected by improper mounting and/or fastening of lift. Although fastening details may vary from one vehicle to the next, some general principles always apply:

- Be certain that all mounting bolts are properly installed and tightened. Bolts used to fasten baseplate assembly to vehicle floor should be equivalent to or greater than a strength rating of SAE Grade 5 and torqued to 28 ft. lbs., dry. Always remember that the most important bolts are those at rear of lift, since these bolts retain most of load.
- Refer to **FIG [1]**. Improper fastening sequence or torquing of bolts may result in a warped or buckled baseplate and, therefore, cause lift to operate unevenly.

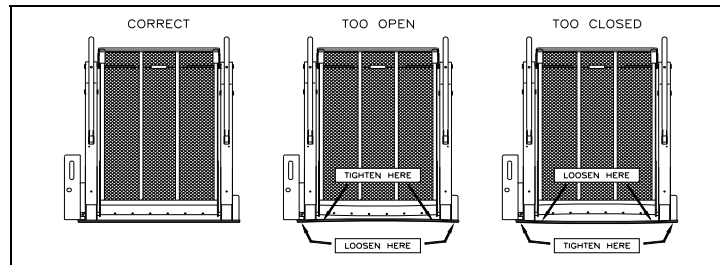


FIG [1]: PLATFORM MOUNTING

3. LIFT INSTALLATION INTO VAN

WARNING!
CHECK FOR HIDDEN OBSTRUCTIONS BELOW FLOOR BEFORE DRILLING OR CUTTING.

- Refer to **FIG [2]** Place stepwell brackets as shown, ensuring that the lower portion of the brackets mate with the corners of the stepwell. In this position, the upper portion of the brackets should overlap with the vehicle floor about 1".

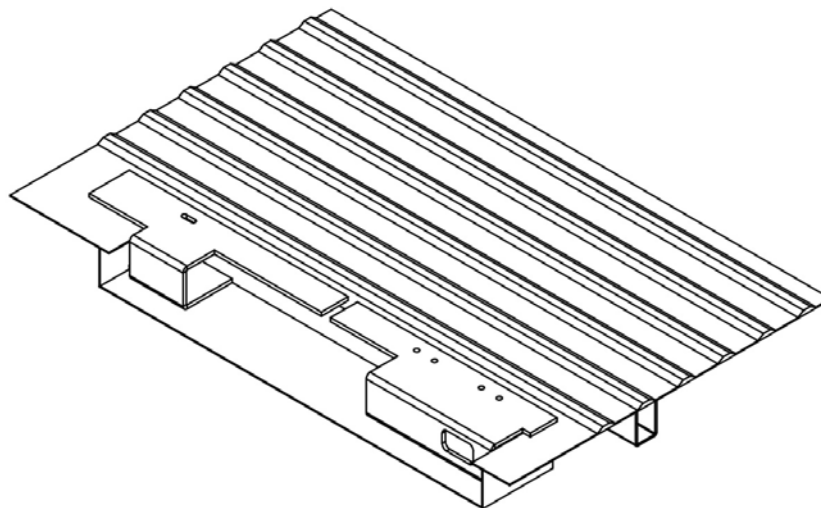


FIG [2]: STEPWELL BRACKET INSTALLATION

- b. Mark bracket mounting locations (one for left bracket and two for right bracket) in stepwell using brackets as a guide.
- c. Remove brackets and use a 7/16" bit to drill through stepwell in locations previously marked.
- d. Place brackets back in stepwell and use 3" carriage bolts to secure.
- e. Refer to **FIG [3]** and **FIG [4]** A paper template is provided with each installation kit. An aluminum drill template is available for purchase. Before moving forward, inspect baseplate of lift being installed to determine the correct pattern to use in the template: either Positions 1, 2, 3, 5 & 7 or Positions 1, 2, 4, 6 & 8

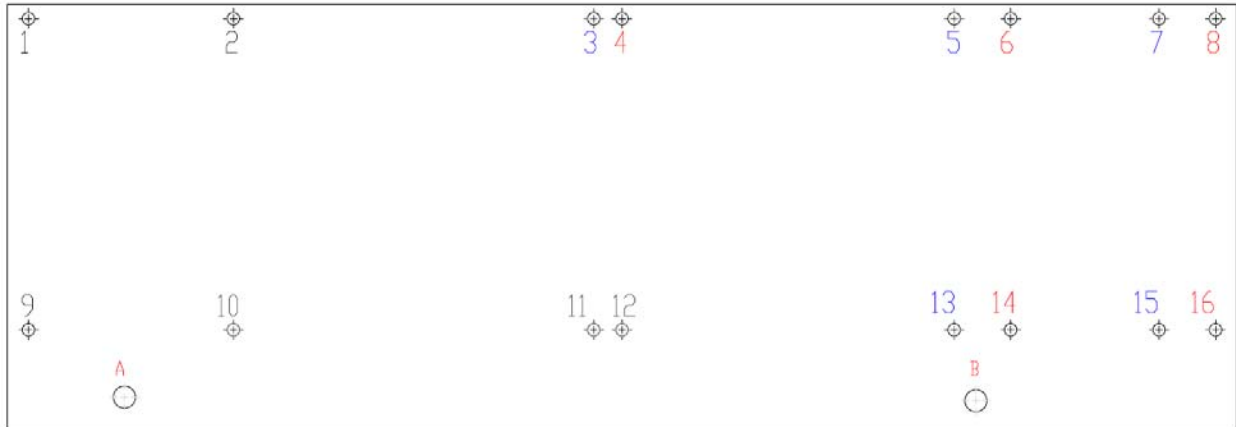


FIG [3]: PAPER INSTALLATION TEMPLATE (57873)

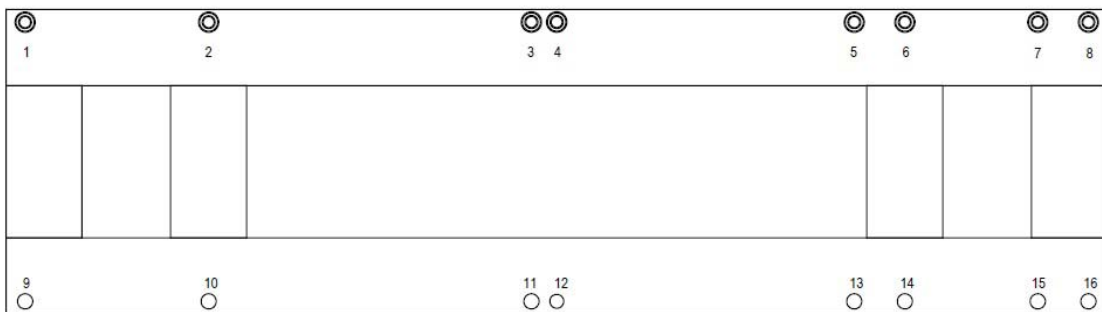
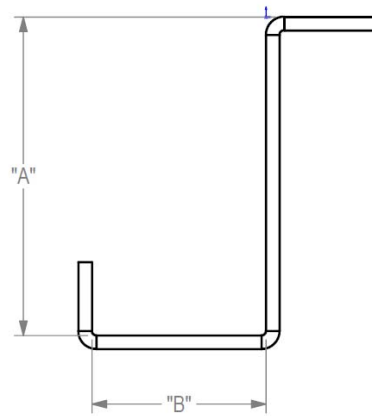


FIG [4]: ALUMINUM INSTALLATION TEMPLATE (57893)

- f. Align the four holes on the lower right hand side of the installation template (positions 13, 14, 15 and 16) with those in the right stepwell bracket. In aluminum installation template, drill bushings should be towards the center of the van.
- g. Ensure that position 10 on the template is aligned with slot in left stepwell bracket.
- h. Using a 7/16" bit, drill 5 rear installation holes in van floor (hole positions determined during step e).
- i. Install vehicle subfloor and drill required holes to match stepwell brackets and holes drilled in vehicle floor. Subfloor should as much of the stepwell as possible without interfering with door.
- j. Place lift in vehicle and position so that holes in base plate line up with installation holes.
- k. Refer to **FIG [5]** Identify and label brackets according to dimensions given in figure 5.



REF	DIMENSION (IN)	57888	57889	57892
A	HEIGHT	4.4	4.1	4.4
B	WIDTH	2.6	2.4	2.4

FIG [5]: BRACKET IDENTIFICATION

- I. Refer to **FIG [6]** and **FIG [7]** Install hardware and reinforcement brackets as specified. All positions to be secured with flat washer, lock washer and nut. All reinforcement brackets should fit securely around vehicle frame when installed.

Hole position	Bolt Length	Additional hardware
10, 13 or 14, 15 or 16	3"	N/A
1, 2	5"	Reinforcement bracket 57888
3 or 4, 7 or 8	5"	Reinforcement bracket 57892
5 or 6	5"	Reinforcement bracket 57889

FIG [6]: HARDWARE INSTALLATION

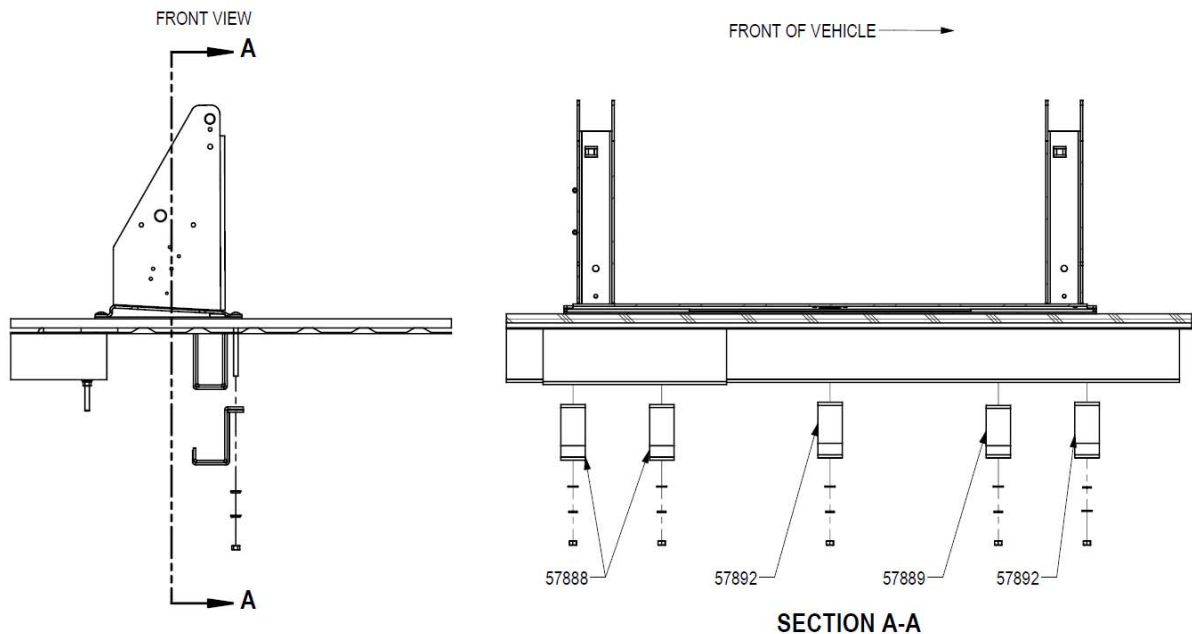


FIG [7]: REINFORCEMENT BRACKET INSTALLATION

III. SAFETY CHECKLIST FOR VEHICLE MANUFACTURER: S/K-SERIES MODELS

This checklist is intended to verify safe operation of Ricon FMVSS 403 and 404 compliant wheelchair lifts.
All items must comply for the wheelchair lift to be considered compliant.

COMPLIANT	NON-COMPLIANT	SAFETY ITEM
		Wheelchair lift and vehicle properly interlocked (lift cannot be powered unless vehicle interlocks are activated, and interlocks cannot be disengaged unless lift is fully stowed).
		Threshold warning device functioning properly (audible warning and visual warning is activated if threshold area is entered when platform is at least one inch below vehicle floor level).
		Main power switch enables and disables the lift control system.
		Control pendant illuminated when the lift is powered and pendant power turned on.
		Inboard rollstop does not rise from floor level with 25 pounds, or more, at center of barrier.
		Platform unable to raise more than 3" above ground if the restraint belt is not engaged.
		Platform lighting functional when lift is powered.
		Platform does not stow if a weight of 50 pounds, or more, is present on platform.
		Manual back-up operation fully functional (see operator manual for directions).

A. RATED LOAD CAPACITY OF INSTALLATION BY LIFT MODEL

MODEL	RATED LOAD CAPACITY, MAX
ST00 & ST01 (SLIDE-AWAY™)	600 POUNDS (272KG)
S 1100 SERIES	800 POUNDS (363KG)
S/K 1200 SERIES	800 POUNDS (363KG)
S/K 2000 SERIES	800 POUNDS (363KG)
S/K 5000 SERIES	800 POUNDS (363KG)
S/K 5500 SERIES	800 POUNDS (363KG)
S/K 2000FF SERIES (TITANIUM™)	1,000 POUNDS (454KG)
S/K 5000FF SERIES (TITANIUM™)	1,000 POUNDS (454KG)

NOTES