



INSTALLATION INSTRUCTIONS

MIRAGE F9TF RETROFIT INSTALLATION KIT #47469 FOR THE REPLACEMENT OF STANDARD 9-INCH BRIDGEPLATE WITH 11-INCH BRIDGEPLATE

- Be certain that these supplemental instructions are read and understood completely before installation is attempted. You should also refer to the Service/Owner Manual for additional installation instructions and safety precautions.
- Check contents of this kit and notify Ricon immediately of any missing parts. Claims for damages that have occurred during shipping must be made to the shipper.

TABLE OF CONTENTS	PAGE
I. INTRODUCTION	1
II. BRIDGEPLATE REMOVAL	2
III. BRIDGEPLATE INSTALLATION	3

- Under no circumstances is maintenance, repair, or adjustment of the product to be performed without the presence of an individual capable of giving aid.
- This lift is driven with hydraulic pressure generated by a hydraulic pump system. The fluid is highly pressurized and possibly very hot. Use extreme caution when doing maintenance and repairs. DO NOT disconnect hoses or fittings when lift is in motion.
- Give immediate attention to all injuries, and administer first-aid, or seek medical attention as necessary.
- Protective eye shields and clothing should be worn during maintenance, repair, and adjustment of the lift.
- Work in a properly ventilated area.
- Check for hidden obstructions before drilling and cutting. Avoid interference with wiring, fuel tank, fuel lines, hydraulic lines, subfloor members, etc.
- Read and understand all instructions before attempting to operate the product.
- Read and understand all instructions before attempting to perform maintenance, repairs, or adjustments to the product.
- Read and comply with warning labels attached to lift.
- Refer to Mirage F9A or F9T Service Manuals for part numbers of replacement parts mentioned here.

I. INTRODUCTION

The purpose of this document is to outline the step by step procedure for the removal of standard 9-Inch bridgeplates and replacement with 11-Inch bridgeplates (Installation Kit #47469) found on Mirage F9TF models.

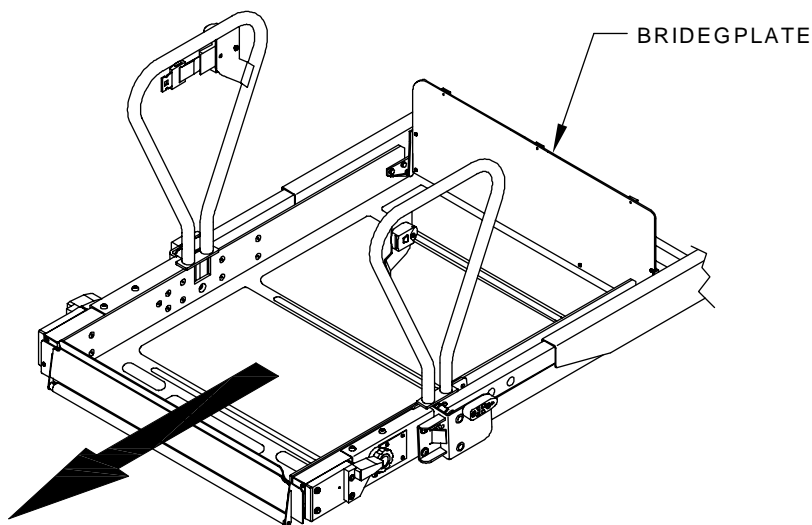
A. TOOLS REQUIRED

Phillips Screw Driver
3/8" Wrench

II. BRIDGEPLATE REMOVAL

A. BRIDGEPLATE REMOVAL

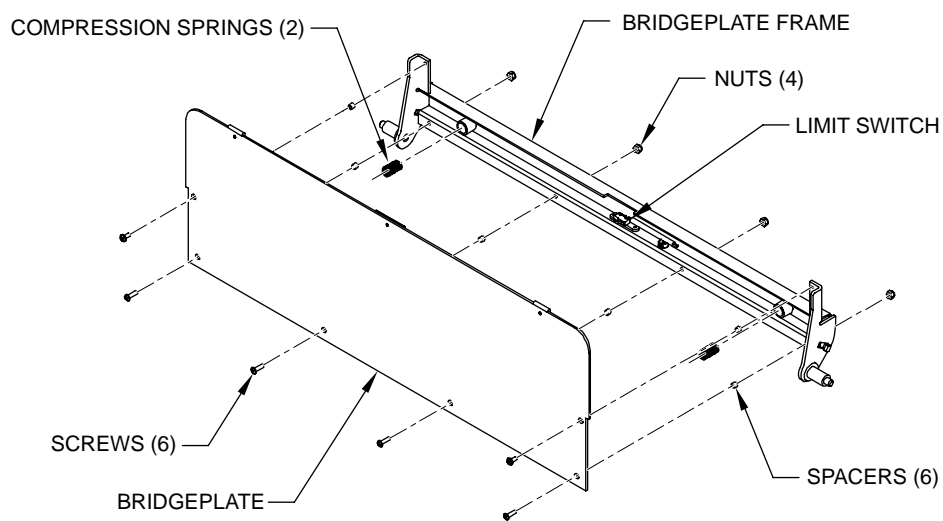
1. Refer to **FIGURE 1**. Deploy platform to vehicle floor level and gain access to bridgeplate hardware.



RSM00002700

FIGURE 1 – DEPLOY LIFT

2. Refer to **FIGURE 2**. Remove (6) screws, (6) spacer, (6) nuts and (2) compression springs and discard.



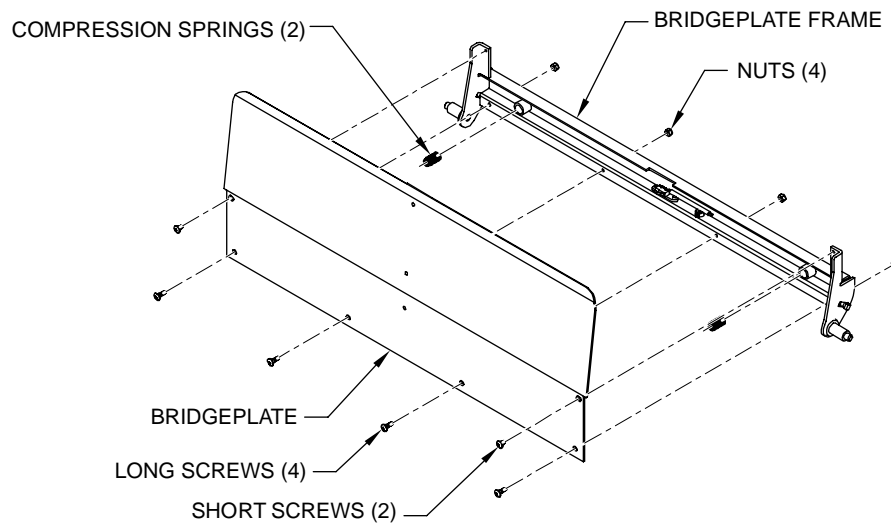
RSM0038700

FIGURE 2 – BRIDGEPLATE REMOVAL

3. Remove bridgeplate from bridgeplate frame.

B. BRIDGEPLATE INSTALLATION

1. Place bridgeplate from Kit #47469 onto bridgeplate frame.
2. Install (2) short screws, (4) long screws, (4) nuts and (2) compression springs with supplied kit.



RSM0038800

FIGURE 3 – BRIDGEPLATE INSTALLATION

3. Stow and deploy lift to ensure that bridgeplate is properly fastened and working properly.

Note: For F9TF models verify that the limit switch is working properly. For bridgeplate or limit switch adjustments, refer to the Mirage F9TF DOT – Public Use Lift Service Manual (32DF9T16) Chapter II – Final Adjustments section.

This page intentionally left blank.