



INSTALLATION INSTRUCTIONS

STOW-LOCK INSTALLATION KIT #44909 FOR MCI, F9T/F9TF

- Be certain that these supplemental instructions are read and understood completely before installation is attempted. You should also refer to the Service/Owner Manual for additional installation instructions and safety precautions.
- Check contents of this kit and notify Ricon immediately of any missing parts. Claims for damages that have occurred during shipping must be made to the shipper.

TABLE OF CONTENTS

PAGE

I. INTRODUCTION	1
II. TOOLS REQUIRED.....	1
III. STOW-LOCK INSTALLATION	2

I. INTRODUCTION

The purpose of this document is to outline step by step procedures for removal and installation of a Stow-Lock Installation Kit #44909.

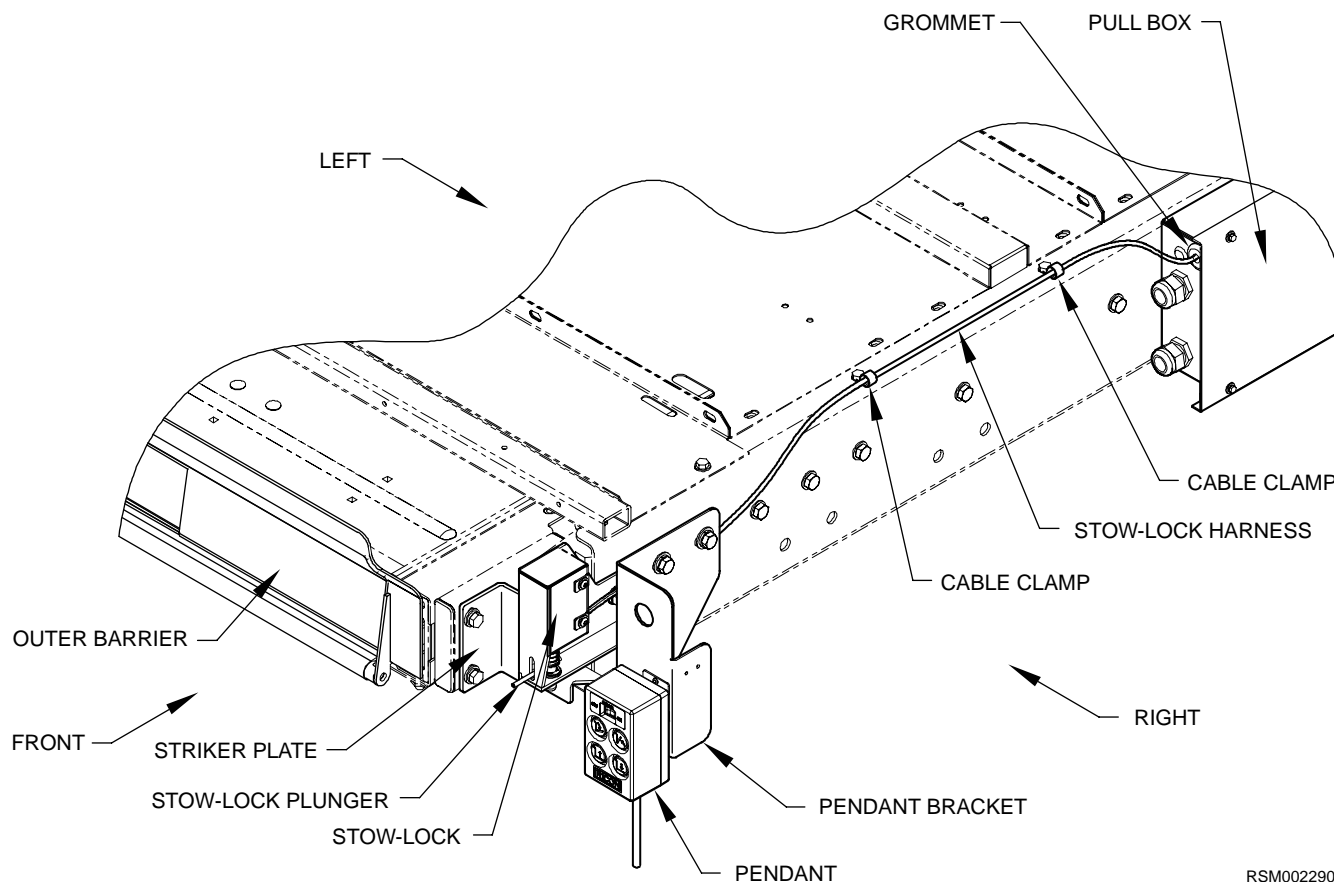
- Under no circumstances is maintenance, repair, or adjustment of the product to be performed without the presence of an individual capable of giving aid.
- Give immediate attention to all injuries, and administer first-aid, or seek medical attention as necessary.
- Protective eye shields and clothing should be worn during maintenance, repair, and adjustment of the windows assembly.
- Work in a properly ventilated area.
- Check for hidden obstructions before drilling and cutting. Avoid interference with wiring, cables or any other vehicle components that may not be visible upon inspection.
- Read and understand all instructions before attempting to operate the product.
- Read and understand all instructions before attempting to perform maintenance, repairs, or adjustments to the product.
- Read and comply with warning labels attached to product.

II. TOOLS REQUIRED

1/8" Drill Bit
5/8" Drill Bit
Cable Ties
Drill Gun
Socket Wrench
Pull Box Drill Template (P/N 44990)


III. STOW-LOCK INSTALLATION

The purpose of these instructions is for installation of Striker Plate and Stow-Lock Installation Kit #44909.



RSM0022900

FIGURE 1: STRIKER PLATE, STOW-LOCK AND PENDANT BRACKET COMPONENTS

 CAUTION
Maintenance and repairs must be performed by an authorized Ricon service technician using Ricon replacement parts. Modifying or failing to properly maintain the product will void warranty and may result in unsafe operating conditions.

1. Refer to **Figure 2**. Remove and discard (2) 5/16-18 x 1 3/4 hex screws, (2) lock washers and (2) flat washers to detach Pendant Bracket (P/N 20226). Retain Pendant Bracket for installation onto Stow-Lock.

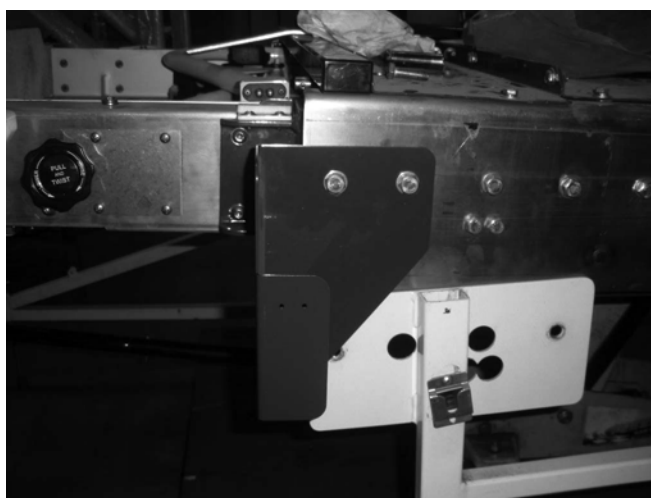


FIGURE 2: REMOVAL OF PENDANT BRACKET

2. Locate the (2) holes where the Pendant Bracket (P/N 20226) was installed.
3. Attach Stow-Lock Assembly (P/N 44971) to right side of enclosure by installing (2) 3/8"-16 x 1 1/4" hex screws, (2) split washers and (2) flat washers, as shown in **Figure 3**.

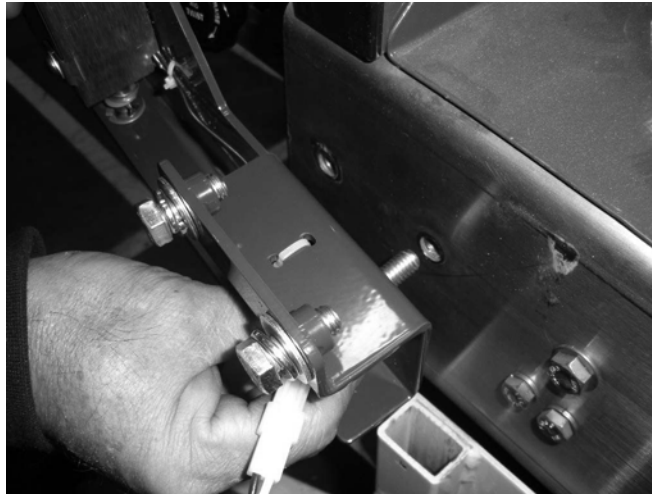


FIGURE 3: STOW-LOCK INSTALLATION

4. Remove and retain (2) 3/8"-16 x 3/4" hex screws, (2) split washers and (2) flat washers that are included with Stow-Lock Kit #44909 and shown in **Figure 3**.
5. Deploy platform approximately 1 1/2 feet to access right side of platform for installation of Striker Plate (P/N 44963).
6. Remove and discard existing hardware that Striker Plate (P/N 44963) will be installed onto side of platform as shown in **Figure 4**.



FIGURE 4: HARDWARE REMOVAL

7. Attach Striker Plate (P/N 44963) to right side of platform by installing (2) 5/16"-18 x 1 3/4" hex screws, (2) split washers and (2) flat washers, as shown in **Figure 5**.

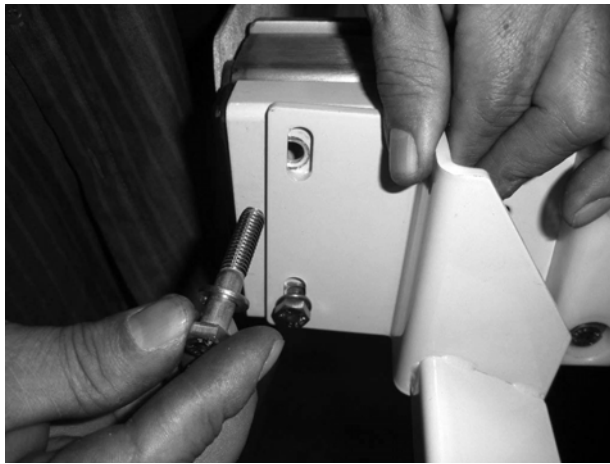


FIGURE 5: STRIKER PLATE INSTALLATION

8. Refer to **Figure 6**. Push the platform into its stowed position. The plunger should drop and lock the platform in place.
9. Adjust Stow-Lock and Striker Plate to gaps shown in **Figure 6**. Set torque wrench to 32-34 LB-FT and tighten screws holding the Stow-Lock Assembly (P/N 44971) in place. Set torque wrench to 18-20 LB-FT and tighten screws holding the Striker Plate (P/N 44963) in place.

NOTE: Ensure the plunger clears the Striker Plate (P/N 44963) when the Stow-Lock Assembly (P/N 44971) is operated manually.

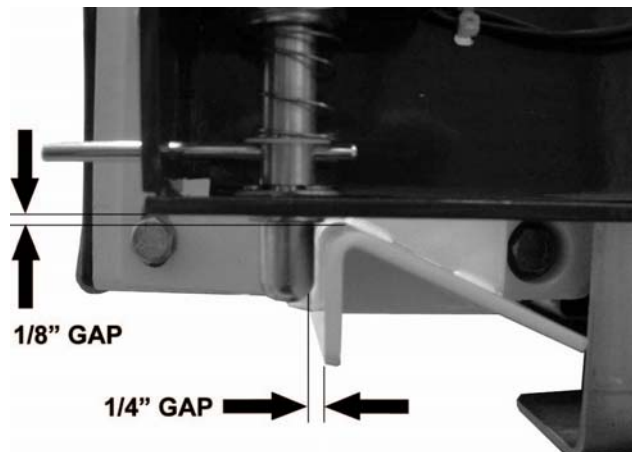


FIGURE 6: STRIKER PLATE/STOW-LOCK ADJUSTMENT

10. Attach Pendant Bracket (P/N 20226) onto Stow-Lock Assembly (P/N 44971) as shown in **Figure 7**. Set torque wrench to 32-34 LB-FT and tighten screws.

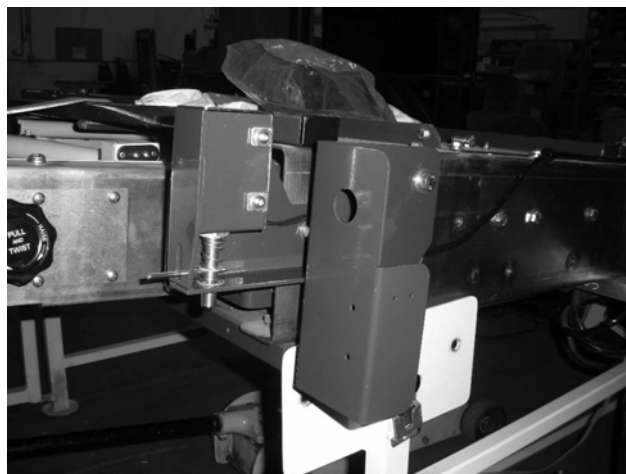


FIGURE 7: PENDANT BRACKET INSTALLATION

11. Remove Pull Box cover and retain hardware.

NOTE: Pull Box will require drilled hole to attach grommet and run electrical harness.

 CAUTION
Maintenance and repairs must be performed by an authorized Ricon service technician using Ricon replacement parts. Modifying or failing to properly maintain the product will void warranty and may result in unsafe operating conditions.

12. Attach Pull Box Drill Template with 1/8" pilot hole (P/N 44990) to Pull Box as shown in **Figure 8**. Ensure that template fixture is flush against Pull Box flange.

 CAUTION
Before drilling holes, verify that underlying wires and tubing will not be damaged.

NOTE: It is recommended to cover the interior wiring components of the Pull Box with a shop towel to shield interior components from any debris caused while drilling holes into Pull Box.



FIGURE 8: PILOT HOLE TEMPLATE FIXTURE

13. Using the Pull Box Drill Template fixture as a guide, drill a 1/8" pilot hole in through left side of Pull Box, as shown in **Figure 8**.

14. Drill a 5/8" hole through 1/8" pilot hole, as shown in **Figure 9**.



FIGURE 9: 5/8" DRILL HOLE

15. Attach Grommet (P/N 26661) through 5/8" drill hole then run Stow-Lock Harness (P/N 20106) through Grommet (P/N 26661) and into Pull Box as shown in **Figure 10**.

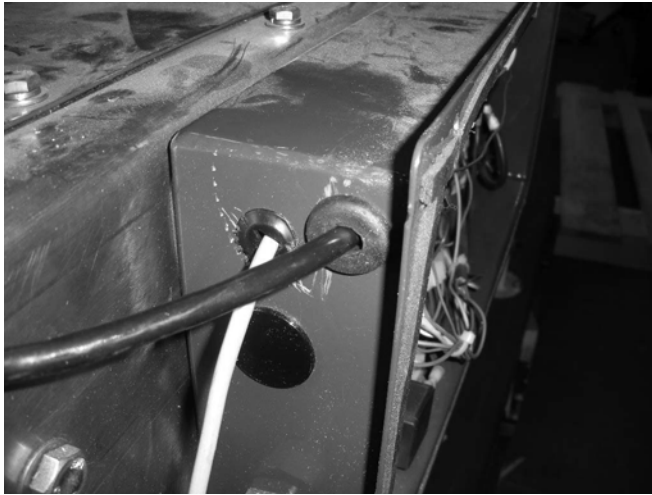


FIGURE 10: PULL BOX - GROMMET AND STOW-LOCK CABLE

16. Locate existing hex screw, lock washer and flat washer at top of enclosure, close to Pull Box then remove and retain hex screws as shown in **Figure 11**.

NOTE: Washers will be discarded and replaced with cable clamps.

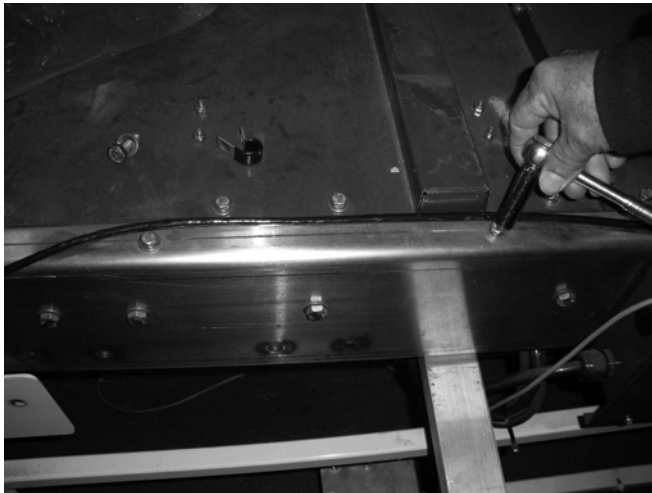


FIGURE 11: HARDWARE

17. Add blue Loctite to hex screw then re-install hex screws with cable clamp to secure Stow-Lock Harness (P/N 20106), as shown in **Figure 12**. Set torque wrench to 8-10 LB-FT to torque these fasteners properly.

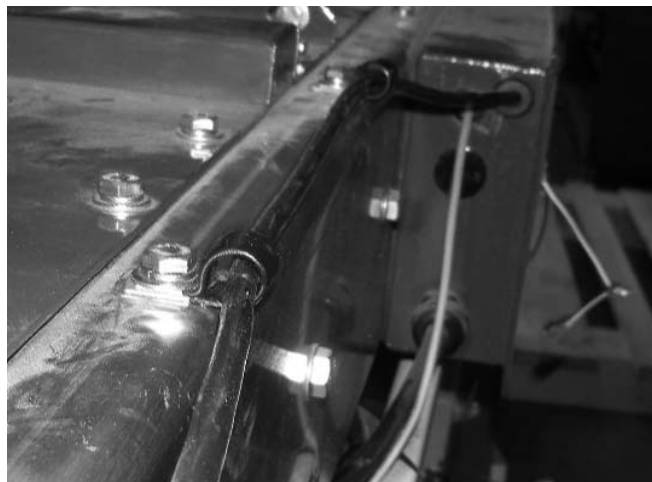


FIGURE 12: CABLE CLAMPS

18. Refer to **Figure 13**. Connect Stow Lock Harness to Stow Lock Interface Harness.



FIGURE 13: STOW LOCK HARNESS CONNECTION

19. Refer to **Figure 14**. In Pull Box, connect White wire from Stow Lock Interface Harness to stud number 9 on the bottom of the terminal block and Black wire to stud number 17.

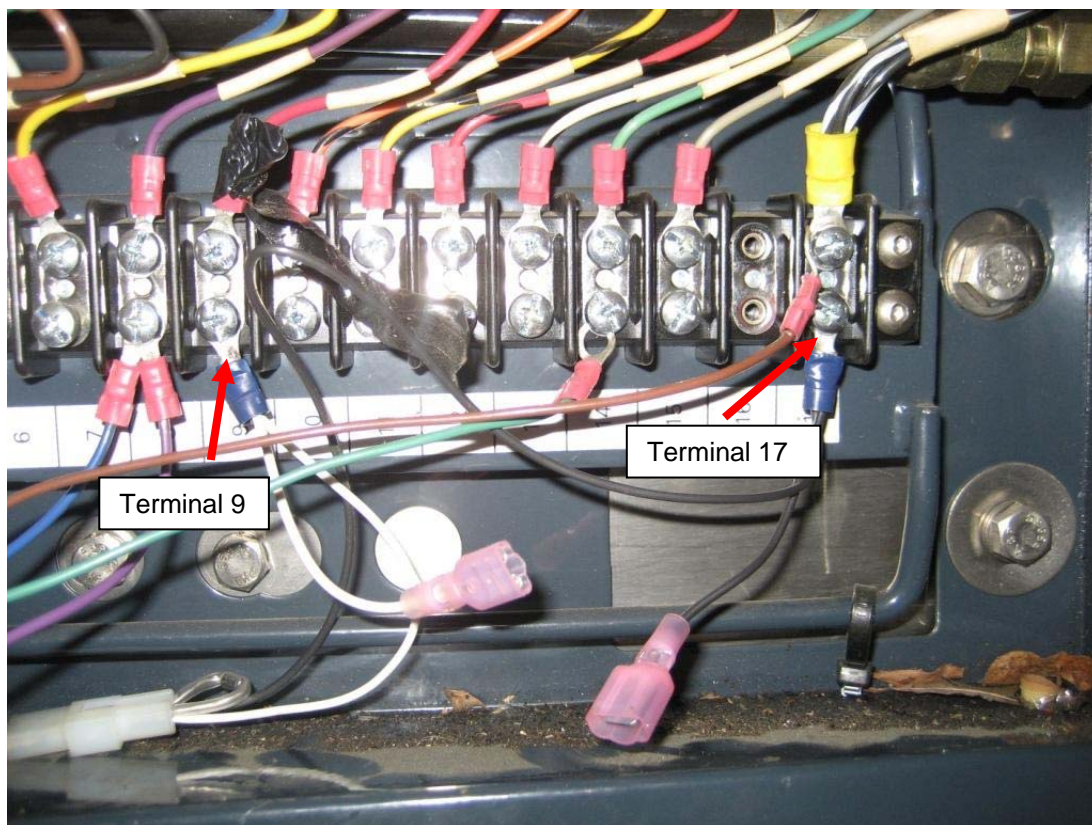


FIGURE 14: STOW-LOCK HARNESS CONNECTIONS

20. Remove Blue wire from stud 6 at the top of the terminal strip and isolate ring terminal with electrical tape.
21. Remove Black wire (RDP) from stud 9 and connect to stud 6 at the top of the terminal strip.
22. Remove Blue and Violet wires on stud 8 at the bottom of the terminal strip and connect to stud 6 at the bottom of the terminal strip.
23. Set torque wrench to 29-31 LB-IN and torque each screw that was removed in the terminal strip.
24. Test Stow-Lock to ensure it is working properly. Stow-Lock plunger should raise and clear the Striker Plate when the DEPLOY button is pressed. Refer to **Figure 6** for proper gap adjustments.

25. Clean any debris that may have accumulated in Pull Box.
26. Install Pull Box cover. Set torque wrench to 42-44 LB-IN to fasten screws to cover.