



INSTALLATION INSTRUCTIONS

S-SERIES - IRS CABLE AND CAM BLOCK INSTALLATION KIT #21813

- Be certain that these supplemental instructions are read and understood completely before installation is attempted. You should also refer to the Service/Owner Manual for additional installation instructions and safety precautions.
- Check contents of this kit and notify Ricon immediately of any missing parts. Claims for damages that have occurred during shipping must be made to the shipper.

TABLE OF CONTENTS

PAGE

I. INTRODUCTION	1
II. IRS CABLE ASSEMBLY REPLACEMENT	2
III. CAM BLOCK INSTALLATION	3

- Under no circumstances is maintenance, repair, or adjustment of the product to be performed without the presence of an individual capable of giving aid.
- This lift is driven with hydraulic pressure generated by a hydraulic pump system. The fluid is highly pressurized and possibly very hot. Use extreme caution when doing maintenance and repairs. DO NOT disconnect hoses or fittings when lift is in motion.
- Give immediate attention to all injuries, and administer first-aid, or seek medical attention as necessary.
- Protective eye shields and clothing should be worn during maintenance, repair, and adjustment of the lift.
- Work in a properly ventilated area.
- Check for hidden obstructions before drilling and cutting. Avoid interference with wiring, fuel tank, fuel lines, hydraulic lines, subfloor members, etc.
- Read and understand all instructions before attempting to operate the product.
- Read and understand all instructions before attempting to perform maintenance, repairs, or adjustments to the product.
- Read and comply with warning labels attached to lift.

I. INTRODUCTION

The purpose of this document is to outline the step by step procedure for replacing the IRS Cable assembly and CAM Roller Block installation.

A. KIT COMPONENTS

IRS Cable Assembly (58.5")	(P/N 34246)
CAM Block	(P/N 37729)
IRS CAM Roller	(P/N V2-AC-124)
CAM Roller Pin	(P/N V2-PI-094)
Screw	(P/N 28805)

B. TOOLS REQUIRED

Allen Wrench
5/64" Phillips screwdriver
3/8" Wrench

II. IRS CABLE ASSEMBLY REPLACEMENT KIT #21813

1. Deploy platform to vehicle floor level.

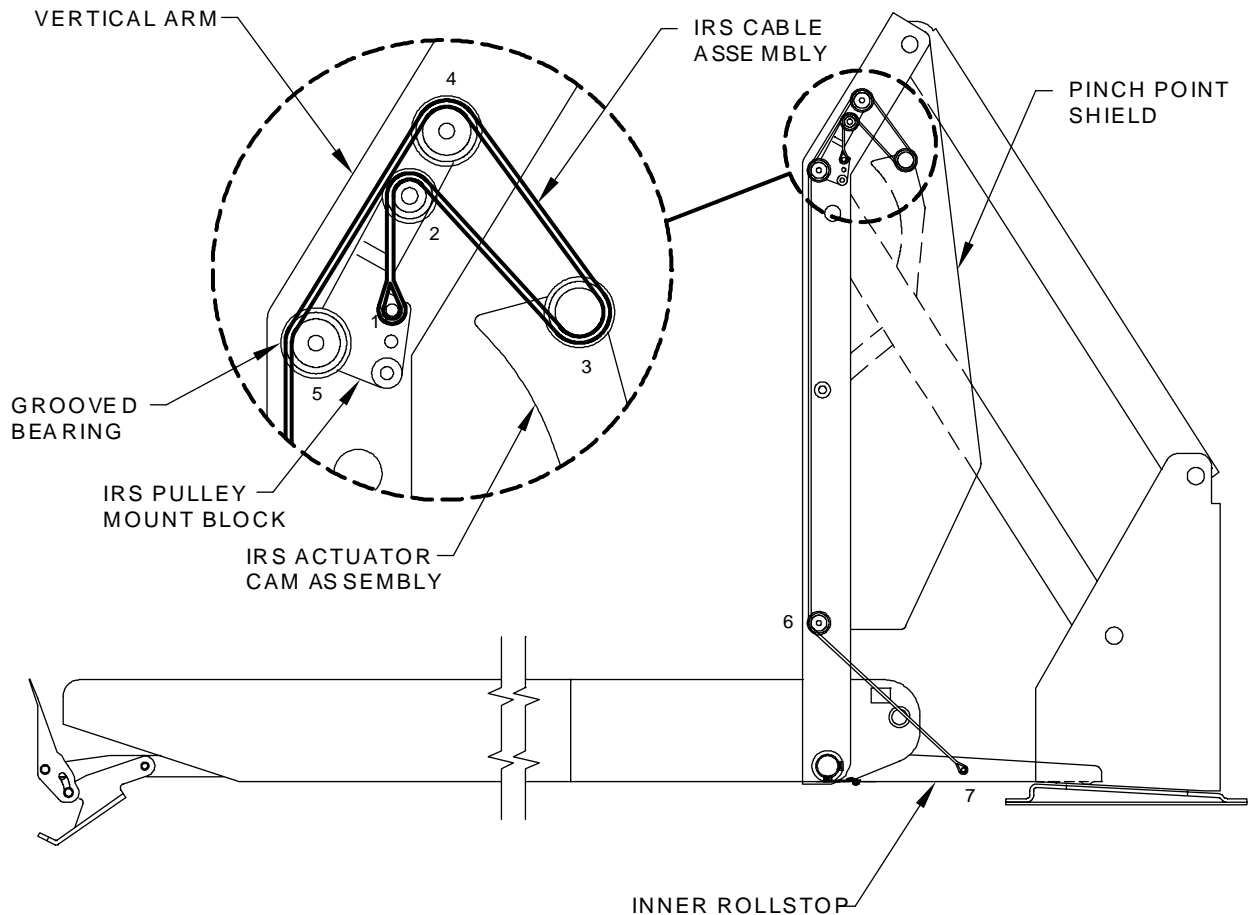
Note: Be certain that bridgeplate has lowered to a horizontal position against the baseplate assembly.

2. Remove pinch point shields from the lift's left and right vertical arm assemblies.
3. Refer to **FIGURE 1**. Assemble and secure one end of each IRS cable assembly to the IRS pulley mount block (1), located inside the left/right vertical arm assemblies using a hex-bolt, bushing and washer.
4. Route each cable assembly around the IRS pulley mount block bushing (2), as shown in **FIGURE 1**.

Note: Be certain that cable is routed between the bushing tab and where the bottom of the cable actually makes contact with the bushing.

5. Install washer and hex-nut over bushing and cable assembly.
6. Continue to route each cable assembly around grooved bearings (3), (4) and (5), as shown in **FIGURE 1**.
7. Route each cable assembly down the length of each vertical arm assembly and grooved bearing (6), as shown in **FIGURE 1**.
8. Assemble and secure the opposite end of each IRS cable assembly to the left/right sides of the inner rollstop (7) using a hex-bolt, washer bushing and hex-nut.

Note: Be certain to install hex-nut on the inside of the inner rollstop.



RSM0001000

FIGURE 1 – BRIDGEPLATE CABLE ROUTING

III. CAM BLOCK INSTALLATION

1. Deploy platform to ground level.
2. Refer to **FIGURE 2**. Assemble cam roller pin and cam roller through cam block.

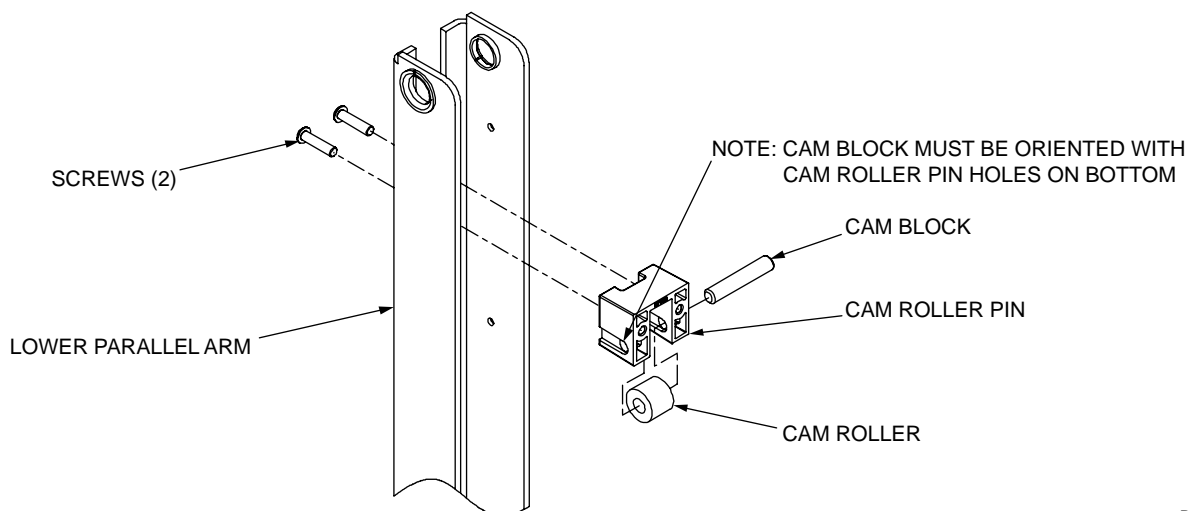


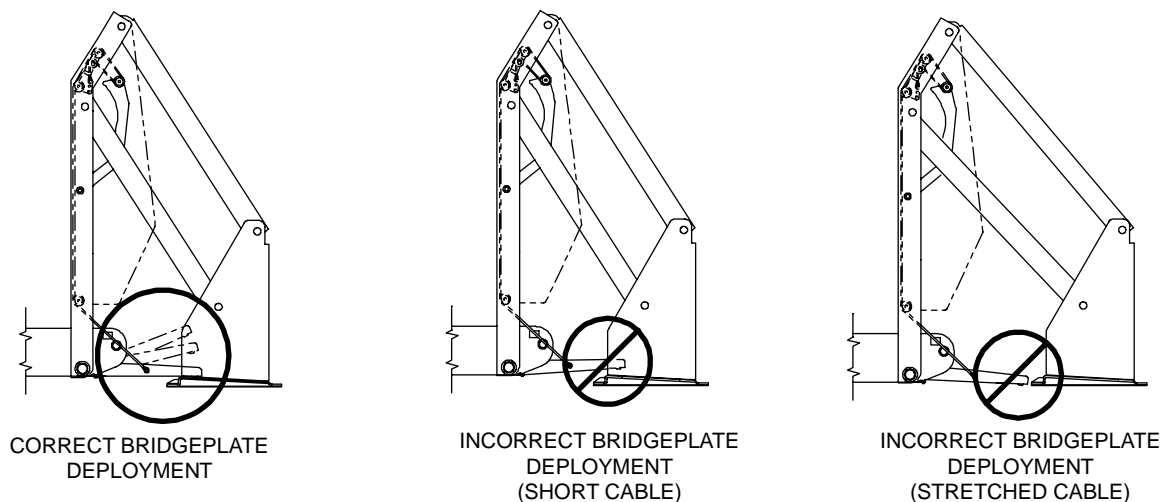
FIGURE 2 – CAM BLOCK INSTALLATION

3. Refer to **FIGURE 2**. Place assembled cam block in lower parallel arm with cam roller pin holes oriented towards the bottom of the CAM block.

Note: CAM block with CAM roller oriented at the bottom of the CAM block, for 5500 Series Wheelchair lifts, affects the deployment timing of the bridgeplate. Ensure that the CAM block is oriented correctly, as shown in **FIGURE 2**.

4. Install two screws to fasten CAM block to lower parallel arm.
5. Stow lift and ensure that bridgeplate properly deploys onto baseplate as shown in **FIGURE 3**.

Note: If timed correctly, the bridgeplate should deploy onto baseplate. If bridgeplate does not deploy correctly, damage can occur to lift. Ensure that CAM block is installed correctly, as shown in **FIGURE 2**.



RSB0000200

FIGURE 3 – BRIDGEPLATE DEPLOYMENT TIMING