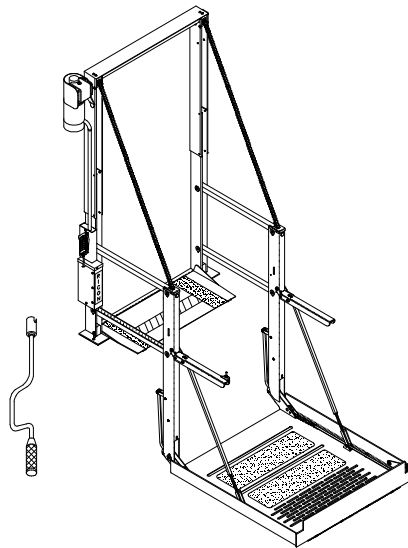


## IV. PARTS DIAGRAMS AND LISTS

This chapter contains parts diagrams and lists for the RICON UNI-lite Personal Wheelchair Lift. The exploded view of each major lift assembly shows individual components referenced by numbers. On each associated list is the reference number, a part description, the quantity used and the Ricon part number. For part numbers of lift decals, refer to the “Decal Locations and Part Numbers” figure in Chapter II of this manual.



LIFT MODEL AND KIT NUMBERS	
PRODUCT NUMBER	UL2400-1P01000 (First listed model number)
DOCUMENTATION KIT NUMBER	01043
PRODUCTION DECAL SET NUMBER	ULXXXXLPXXXXXX
SPARE DECAL KIT NUMBER	26020

### PARTS DIAGRAM PAGE

FIGURE 4-1: UNI-lite PLATFORM ASSEMBLY .....	4-2
FIGURE 4-2: UNI-lite DUAL ENTRY PLATFORM ASSEMBLY .....	4-4
FIGURE 4-3: UNI-lite BASE ASSEMBLY .....	4-6
FIGURE 4-4: UNI-lite ELECTRICAL ASSEMBLY .....	4-10
FIGURE 4-5: UNI-lite PLATFORM POST ASSEMBLY .....	4-14

DATE: 11-15-96
DWG. 32DLPF00
REV. NO. 002

UNI-LITE  
 PLATFORM ASSEMBLY  
 ALL STANDARD ENTRY MODELS  
 SERIAL NO's. 0001 and HIGHER

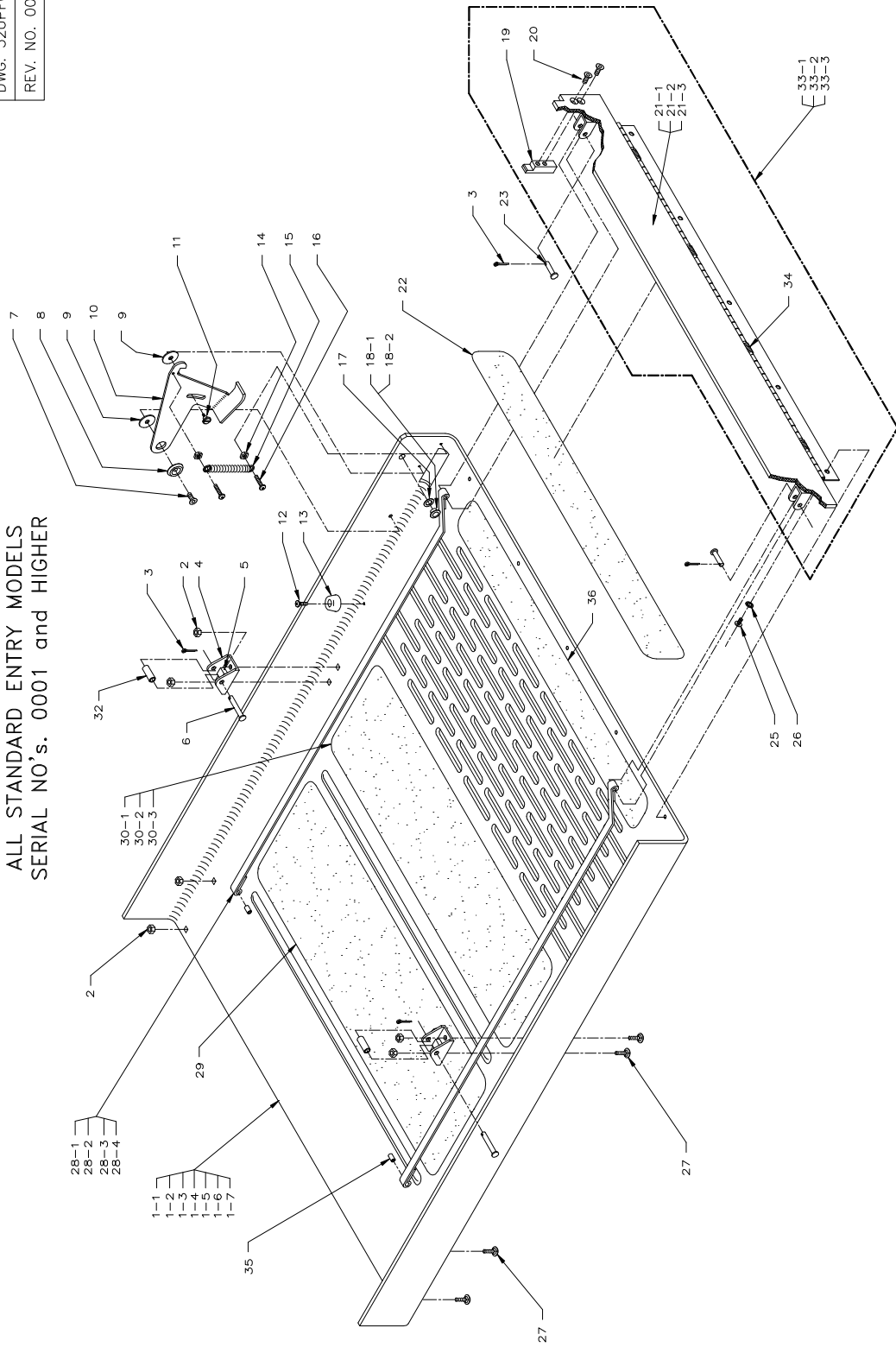


FIGURE 4-1: UNI-LITE PLATFORM ASSEMBLY

**FIGURE 4-1: UNI-LITE PLATFORM ASSEMBLY  
ALL STANDARD ENTRY MODELS  
SERIAL NO's. 0001 and HIGHER**

REF.	DESCRIPTION	QTY.	PART NO.
1-1 *	ASSY, PLATFORM, 29" X 40"	1	UL-PF-001
1-2 *	ASSY, PLATFORM, 29" X 44"	1	UL-PF-200
1-3 *	ASSY, PLATFORM, 26" X 39"	1	UL-PF-100
1-4 *	ASSY, PLATFORM, 26" X 36"	1	UL-PF-400
1-5 *	ASSY, PLATFORM, 32" X 40"	1	UL-PF-300
1-6 *	ASSY, PLATFORM, 32" X 44"	1	UL-PF-500
1-7 *	ASSY, PLATFORM, 26" X 44"	1	UL-PF-600
2	NUT, HEX, 1/4-20, SS (BAG OF TEN)	8	15943
3	COTTER PIN, 5/32 X 1.0 (BAG OF TEN)	4	15930
4	CHAIN, SUPPORT, CLEVIS	2	UL-PF-003
5	PAD, PLATFORM, CLEVIS	2	UL-PF-022
6	CLEVIS PIN, 1/4 X 1 23/64, ZINC PLATED	2	28636
7	MS, 1/4-20 X 5/8, SOCKET, FLAT	1	28648
8	BUSHING, PIVOT ROLLSTOP LATCH	1	UL-PF-010
9	WASHER, NYLON, .315ID X 1.156OD X .062	2	28632
10	ROLLSTOP LATCH	1	UL-PF-009
11	SHOULDER SCREW, ROLLSTOP LATCH	1	UL-PF-034
12	MS, 10-24 X 3/8, PHIL PAN (BAG OF TEN)	2	15944
13	BUMPER, RUBBER	2	28408
14	NUT, HEX, 6-32	2	28301
15	SPRING, EXTENSION, UNI-LITE	1	25447
16	MS, 6-32 X 3/8, PHIL PAN	2	28043
17	WASHER, NYLON, .375ID X .63OD X 0.032 (FOR LIFTS PRIOR TO SERIAL #829)	1	28562
18-1	SPACER, ROLLSTOP LATCH (FOR LIFTS PRIOR TO SERIAL #829)	1	UL-PF-027
18-2	GUIDE, DRIVE SHAFT PIVOT (FOR LIFTS BEGINNING WITH SERIAL #830, CONSULT FACTORY)	1	UV-DS-014
19	CATCH, ROLLSTOP LATCH	1	UL-PF-026
20	SOCKET, FLAT, 1/4-20 X 3/4	2	28184
21-1	ROLLSTOP, WELD ASSY, 29"	1	UL-PF-007
21-2	ROLLSTOP, WELD ASSY, 26"	1	UL-PF-014
21-3	ROLLSTOP, WELD ASSY, 32"	1	UL-PF-024
22	SAFETY TREAD, 25 1/2 X 3, SAFETY YELLOW	1	25664
23	CLEVIS PIN, 1/4 X 55/64 (BAG OF TEN)	2	15940
25 **	SOCKET, BUTTON HD, 1/4-20 X 3/8, SST	5	28181
26 **	WASHER, 1/4 STAR, INTERNAL	5	28259
27	BOLT, CARRIAGE, SST, 1/4-20 X 5/8	8	14-07-104
28-1	STRAP, ROLLSTOP ACTUATOR, 36" PLATFORM	2	UL-DS-040
28-2	STRAP, ROLLSTOP ACTUATOR, 39" PLATFORM	2	UL-DS-039
28-3	STRAP, ROLLSTOP ACTUATOR, 40" PLATFORM	2	UL-DS-006
28-4	STRAP, ROLLSTOP ACTUATOR, 44" PLATFORM	2	UL-DS-044
29	SAFETY TREAD, 25 1/2 X 8, OCEAN GRAY	2	25646
30-1	SAFETY TREAD, 25 1/2 X 4, OCEAN GRAY	1	25662
30-2	SAFETY TREAD, 25 1/2 X 7, OCEAN GRAY	1	25647
30-3	SAFETY TREAD, 25 1/2 X 12, OCEAN GRAY	1	25661
32	ROLLER, SUPPORT CHAIN, CLEVIS	1	UL-AC-009
33-1	ROLLSTOP ASSEMBLY, 26"	1	UL-PF-114
33-2	ROLLSTOP ASSEMBLY, 29"	1	UL-PF-117
33-3	ROLLSTOP ASSEMBLY, 32"	1	UL-PF-124
34	SPRING-BARRIER HINGE LARGE	4	25434
35	BUSHING, ROLLSTOP ACTUATOR, SST.	2	UL-PF-032
36	SAFETY TREAD 25 1/2 X 2.5, OCEAN GRAY	1	25650

\* All items included in this assembly are illustrated.

\*\* For platform assemblies 32" X 40" and 32" X 44", quantity is 7.

DATE: 11-15-96
DWG. 32DULPFO
REV. NO. 002

UNI-LITE  
 DUAL ENTRY PLATFORM ASSEMBLY  
 ALL DUAL ENTRY MODELS  
 SERIAL NO's. 0001 and HIGHER

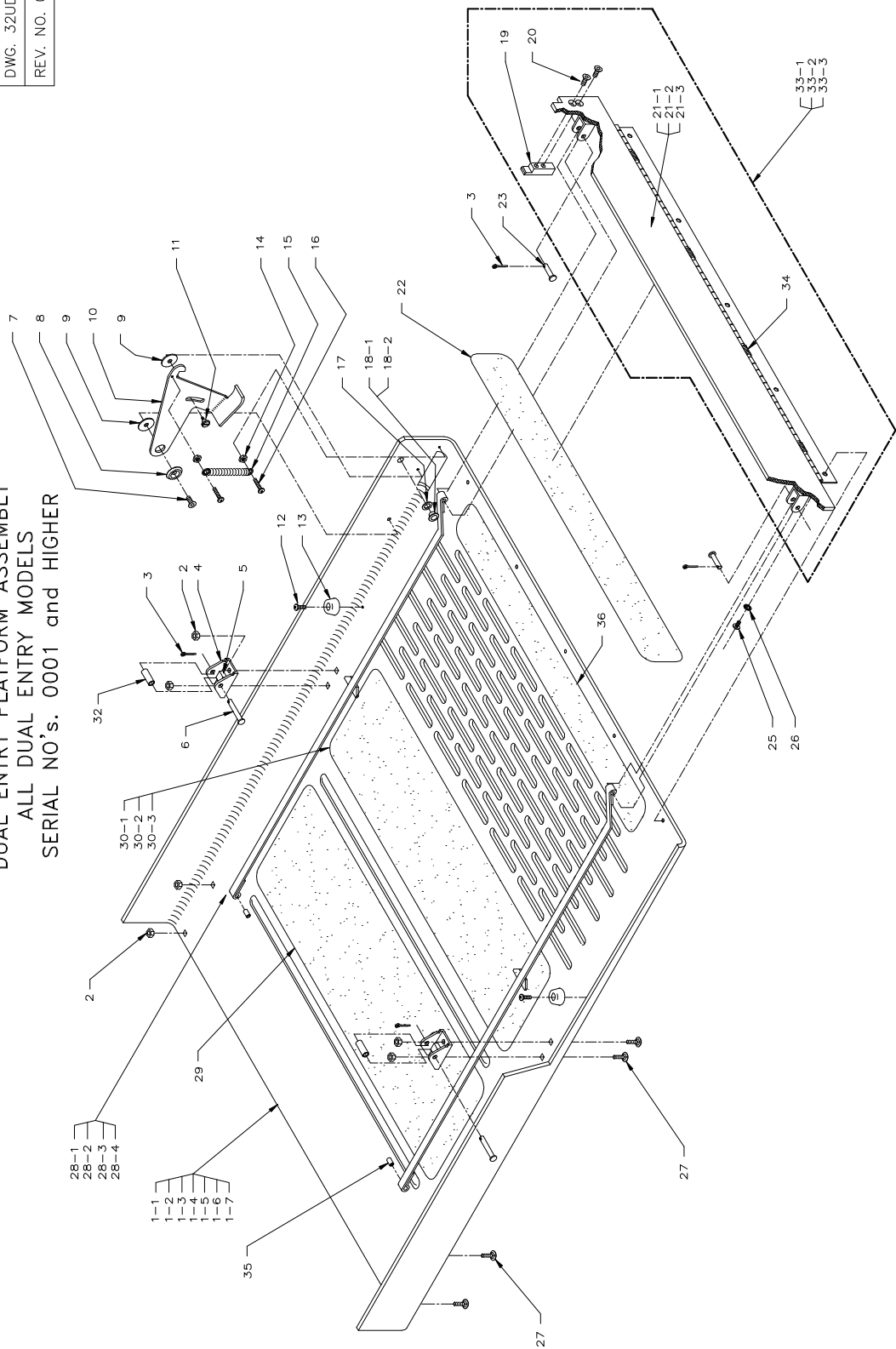


FIGURE 4-2: UNI-LITE DUAL ENTRY PLATFORM ASSEMBLY

**FIGURE 4-2: UNI-LITE DUAL ENTRY PLATFORM ASSEMBLY  
ALL DUAL ENTRY MODELS  
SERIAL NO's. 0001 and HIGHER**

REF.	DESCRIPTION	QTY.	PART NO.
1-1 *	ASSY, PLATFORM, 29" X 40" DEP	1	UL-PF-120
1-2 *	ASSY, PLATFORM, 29" X 44" DEP	1*	UL-PF-210
1-3 *	ASSY, PLATFORM, 26" X 39" DEP	1*	UL-PF-110
1-4 *	ASSY, PLATFORM, 26" X 36" DEP	1*	UL-PF-410
1-5 *	ASSY, PLATFORM, 32" X 40" DEP	1*	UL-PF-310
1-6 *	ASSY, PLATFORM, 32" X 44" DEP	1*	UL-PF-510
1-7 *	ASSY, PLATFORM, 26" X 44" DEP	1*	UL-PF-610
2	NUT, HEX, 1/4-20	8	28308
3	PIN, COTTER, 5/32 X 1.0	4	28646
4	CHAIN, SUPPORT, CLEVIS, DEP	2	UL-PF-030
5	PAD, PLATFORM, CLEVIS	2	UL-PF-022
6	PIN, CLEVIS, 1/4 X 1 23/64, ZINC PLATED	2	28636
7	MS, 1/4-20 X 5/8, SOCKET, FLAT	1	28648
8	BUSHING, PIVOT ROLLSTOP KICKOUT	1	UL-PF-010
9	WASHER, NYLON, .315ID X 1.156OD X .062	2	28632
10	LATCH, ROLLSTOP	1	UL-PF-009
11	SCREW, SHOULDER, LATCH, ROLLSTOP	1	UL-PF-034
12	MS, 10-24 X 3/8, PHIL PAN (BAG OF TEN)	2	15944
13	BUMPER, RUBBER	2	28408
14	NUT, HEX, 6-32	2	28301
15	SPRING, EXTENSION, UNI-LITE	1	25447
16	MS, 6-32 X 3/8 PHIL PAN	2	28043
17	WASHER, NYLON, .375ID X .63OD X 0.032	1	28562
18-1	SPACER, ROLLSTOP LATCH (FOR LIFTS PRIOR TO S/N 829)	1	UL-PF-027
18-2	GUIDE, DRIVE SHAFT PIVOT (FOR LIFTS BEGINNING WITH S/N 830, CONSULT FACTORY)	1	UV-DS-014
19	CATCH, ROLLSTOP LATCH	1	UL-PF-026
20	SOCKET, FLAT, 1/4-20 X 3/4	2	28184
21-1	ASSY, WELD, ROLLSTOP, 29"	1	UL-PF-007
21-2	ASSY, WELD, ROLLSTOP, 26"	1	UL-PF-014
21-3	ASSY, WELD, ROLLSTOP, 32"	1	UL-PF-024
22	TREAD, SAFETY, 25 1/2 X 3, SAFETY YELLOW	1	25664
23	PIN, CLEVIS, 1/4 X 55/64 (BAG OF TEN)	2	15940
25 **	SOCKET, BUTTON HD, 1/4-20 X 3/8, SST	5	28181
26 **	WASHER, 1/4 STAR, INTERNAL	5	2825
27	BOLT, CARRIAGE, SST, 1/4-20 X 5/8	8	14-07-104
28-1	ASSY, STRAP, S/S, DEP 40" PLATFORM	2	UL-DS-019
28-2	ASSY, STRAP, S/S, DEP 44" PLATFORM	2	UL-DS-020
28-3	ASSY, STRAP, S/S, DEP 39" PLATFORM	2	UL-DS-014
28-4	ASSY, STRAP, S/S, DEP 36" PLATFORM	2	UL-DS-022
29	SAFETY TREAD, 25 1/2 X 8, OCEAN GRAY	2	25646
30-1	SAFETY TREAD, 25 1/2 X 4, OCEAN GRAY	1	25662
30-2	SAFETY TREAD, 25 1/2 X 7, OCEAN GRAY	1	25647
30-3	SAFETY TREAD, 25 1/2 X 12, OCEAN GRAY	1	25661
32	ROLLER, SUPPORT CHAIN, CLEVIS	1	UL-AC-009
33-1	ASSY, ROLLSTOP 26"	1	UL-PF-114
33-2	ASSY, ROLLSTOP, 29"	1	UL-PF-117
33-3	ASSY, ROLLSTOP, 32"	1	UL-PF-124
34	SPRING-BARRIER HINGE LARGE	4	25434
35	BUSHING, ROLLSTOP ACTUATOR, SST	2	UL-PF-032
36	SAFETY TREAD, 25 1/2 X 2.5, OCEAN GRAY	1	25650

\* All items included in this assembly are illustrated.

\*\* For platform assemblies 32" X 40" and 32" X 44", quantity is 7.

UNI-LITE  
 BASE ASSEMBLY  
 ALL MODELS  
 SERIAL NO'S. 0001 - PRESENT

DATE: 02-15-97
DWG. 32UB000
REV NO. 010

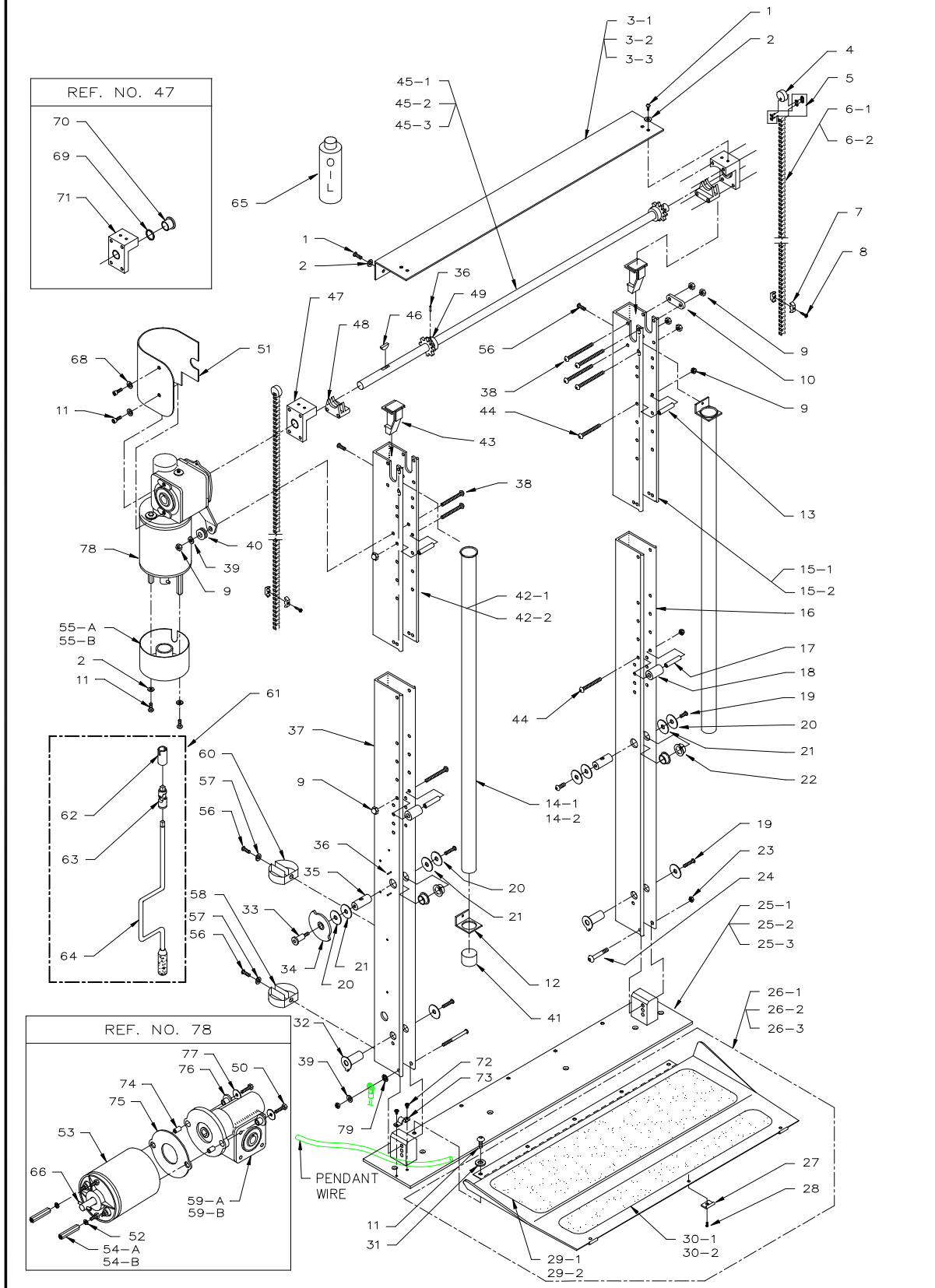


FIGURE 4-3: UNI-LITE BASE ASSEMBLY

**FIGURE 4-3: UNI-LITEBASE ASSEMBLY  
ALL MODELS  
SERIAL NO's. 0001 and HIGHER**

REF.	DESCRIPTION	QTY.	PART NO.
1	SOCKET, BUTTON HD, 1/4-20 X 1/2"	6	28182
2	WASHER, 1/4", FLAT, SAE	12	28273
3-1	PLATE, ALIGNMENT, TOP, 29"	1	UL-BA-007
3-2	PLATE, ALIGNMENT, TOP, 26"	1	UL-BA-024
3-3	PLATE, ALIGNMENT, TOP, 32"	1	UL-BA-025
4	TAB, CHAIN	2	UL-DS-024
5	CHAIN, LINK, MASTER #40	4	25049
6-1	CHAIN, #40, (STD)	2	UL-DS-002
6-2	CHAIN, #40, (TALL)	2	UL-DS-018
7	CHAIN, STOP, SAFETY	4	UL-DS-008
8	SMS #12 X 1 HEX WASHER HEAD "A"	2	28396
9	NUT-HEX, 1/4-20", NYLON INSERT (BAG OF TEN)	14	15919
10	SPACER, MOUNTING BKT, TOP	2	UL-BA-026
11	SOCKET, BUTTON HEAD, 1/4-20 X 3/8"	9	28150
12	BRACKET, CHAIN TUBE	2	UL-BA-004
13	SPACER, MAIN POST (USE 4 FOR SHORT LIFTS)	2	UL-BA-006
14-1	TUBE-CHAIN, WITH RING	2	25524
14-2	TUBE-CHAIN 36" LONG	2	UL-BA-040
15-1	POST, EXTENSION, MAIN, STD	1	UL-BA-011
15-2	POST, EXTENSION, MAIN, TALL, STD	1	UL-BA-034
16	POST, MAIN, STD	1	UL-BA-012
17	TUBE, FOLD STOP	2	UL-AC-044
18	FOLD STOP	2	UL-BA-010
19	SOCKET, BUTTON HEAD, 5/16-18 X 3/4" BLK. OXD. SST	5	28820
20	WASHER, FENDER, 0.313 ID X 1.25 OD BLK. OXD. SST (BAG OF TEN)	6	15921
21	WASHER, NYLON	4	28563
22	BEARING-DU FLG, 3/4 ID X 1/4 L	4	25386
23	NUT-HEX, 5/16-18" NYLON INSERT	2	28314
24	SOCKET, BUTTON HEAD, 5/16-18 X 2-1/4, BLK. OXD. SST	2	282294
25-1	ASSY, WELD, BASEPLATE, WIDE, 29"	1	UL-BA-014
25-2	ASSY, WELD, BASEPLATE, WIDE, 32"	1	UL-BA-022
25-3	ASSY, WELD, BASEPLATE, WIDE 26"	1	UL-BA-023
26-1	ASSY, MECH, BRIDGEPLATE, 29", (INCLUDES REF NOS 29 & 30)	1	UL-BA-127
26-2	ASSY, MECH, BRIDGEPLATE, 26", (INCLUDES REF NOS 29 & 30)	1	UL-BA-116
26-3	ASSY, MECH, BRIDGEPLATE, 32", (INCLUDES REF NOS 29 & 30)	1	UL-BA-130
27	SKID, BRIDGEPLATE	3	UL-BA-021
28	MS, 10-24 X 1/4", PHIL FLAT, UNDERCUT	3	28106
29-1	SAFETY TREAD, 23 X 3, SAFETY YELLOW	1	25648
29-2	SAFETY TREAD, 23 X 7, SAFETY YELLOW	1	25649
30-1	SAFETY TREAD, 25 1/2 X 3, SAFETY YELLOW	1	25664
30-2	SAFETY TREAD, 25 1/2 X 7, SAFETY YELLOW	1	25665
31	WASHER, 1/4", STAR INTERNAL	5	28259
32	ASSY, WELD, PIN, LINK ARM,	2	UL-AC-047
33	SCREW, SHOULDER, 3/8 X 1/2"	1	28159
34	CAM, LIFT CONTROL w/SCREW	1	UL-ES-018
35	PIN, LINK ARM, CAM	2	UL-AC-008
36	PIN, ROLL, 3/32 X 1/2" (BAG OF TEN)	2	14496
37	POST, MAIN, LH	1	UL-BA-013
38	SOCKET, BUTTON HEAD, 1/4-20 X 3"	9	28149
39	WASHER, 5/16" FLAT, SAE	2	28277
40	GROMMET	1	26656
41	RED CAP	2	25537
42-1	POST, EXTENSION, MAIN, LEFT	1	UL-BA-017
42-2	POST, EXTENSION, MAIN-TALL, LEFT	1	UL-BA-035
43	BLOCK, CHAIN GUIDE	2	UL-DS-047
44	SOCKET, BUTTON HD, 1/4-20 X 2 1/2"	4	28148
45-1	SHAFT, POWER, STD, 29"	1	UL-DS-004
45-2	SHAFT, POWER, WIDE, 26"	1	UL-DS-011
45-3	SHAFT, POWER, WIDE, 32"	1	UL-DS-016
46	KEY, WOODRUFF	1	28430
47	ASSY, BLOCK, BEARING	2	UL-BA-038

REF.	DESCRIPTION	QTY.	PART NO.
48	STRIPPER, CHAIN	2	UL-BA-003
49	SPROCKET	2	UL-DS-003
50	BOLT HEX 1/4-20 X 1" (BAG OF TEN)	2	14493
51	GEAR BOX, COVER	1	UL-AC-026
52	WASHER, 1/4 SPLIT LOCK	2	28274
53	MOTOR, 12VDC	1	25470
54-A	STANDOFF, MOTOR COVER (S.N's. 0001-5719)	2	28368
54-B	STANDOFF, MOTOR UNI-LITE ( S.N's. 5720- )	2	283682
55-A	COVER, MOTOR ( S.N's. 0001-5719)	1	UL-AC-022
55-B	COVER, BOTTOM MOTOR UNI-LITE ( S.N's. 5720- )	1	UL-AC-122
56	MS, 10-24 X 3/8", PHIL PAN (BAG OF TEN)	4	15944
57	WASHER, #10 SPLIT LOCK (BAG OF TEN)	2	15941
58	CLIP, EMERGENCY TOOLS	1	25543
59-A	GEAR BOX, 70:1 INCLUDING TORQUE ARM (S.N's.0001-6999)	1	25485
59-B	GEAR BOX, 70:1 INCLUDING TORQUE ARM (S.N's. 7000-)	1	25489
60	CLIP-EMERGENCY TOOLS-SMALL	1	255435
61	EMERGENCY WRENCH	1	06001
62	SOCKET-EMERGENCY 3/8 DRIVE-11/16 DEEP	1	26724
63	UNIVERSAL JOINT, 3/8 DRIVE	1	26727
64	SPEED WRENCH-3/8 DRIVE	1	26725
65	GEAR LUBE, MORSE SYNTHETIC, 8 oz.	1	20-16-616
66	ROLL PIN 3/16 X 1 SST	1	28360
67	SOCKET BUTTON HEAD 1/4-20 X 3/4 SST	5	28181
68	WASHER #10 FLAT	2	28271
69	SPACER, B-BLOCK BUSHING	1	UL-BA-015
70	BUSHING-BRONZE SPURR	1	25307
71	BEARING BLOCK, ALUM.	1	UL-BA-002
72	MS, 10-24 X 1/4 PHIL PAN	2	28105
73	CLAMP, RETAINING	1	28407
74	SLEEVE-MOTOR/GEARBOX CONNECTION (S.N's. 7000-)	2	UL-AC-081
75	GASKET-RUBBER MOTOR GEARBOX (S.N's. 7000-)	2	UL-AC-082
76	BUSHING-STEM, SHOCK MOUNT (S.N's. 7000-)	2	25370
77	WASHER-1/4" FENDER 1" OD (S.N's. 7000-)	2	28275
78	MOTOR, 1 HP, 12 VDC (S.N's. 7000-)	1	UL-DS-100
79	WASHER-5/16 X 0.61 OD X 0.03 INTL. STAR BRZ	1	28965



This page intentionally left blank.

UNI-LITE  
ELECTRICAL ASSEMBLY  
ALL MODELS  
SERIAL NO's. 0001 and HIGHER

DATE: 06/28/99

DWG. 32UEL00

REV. I

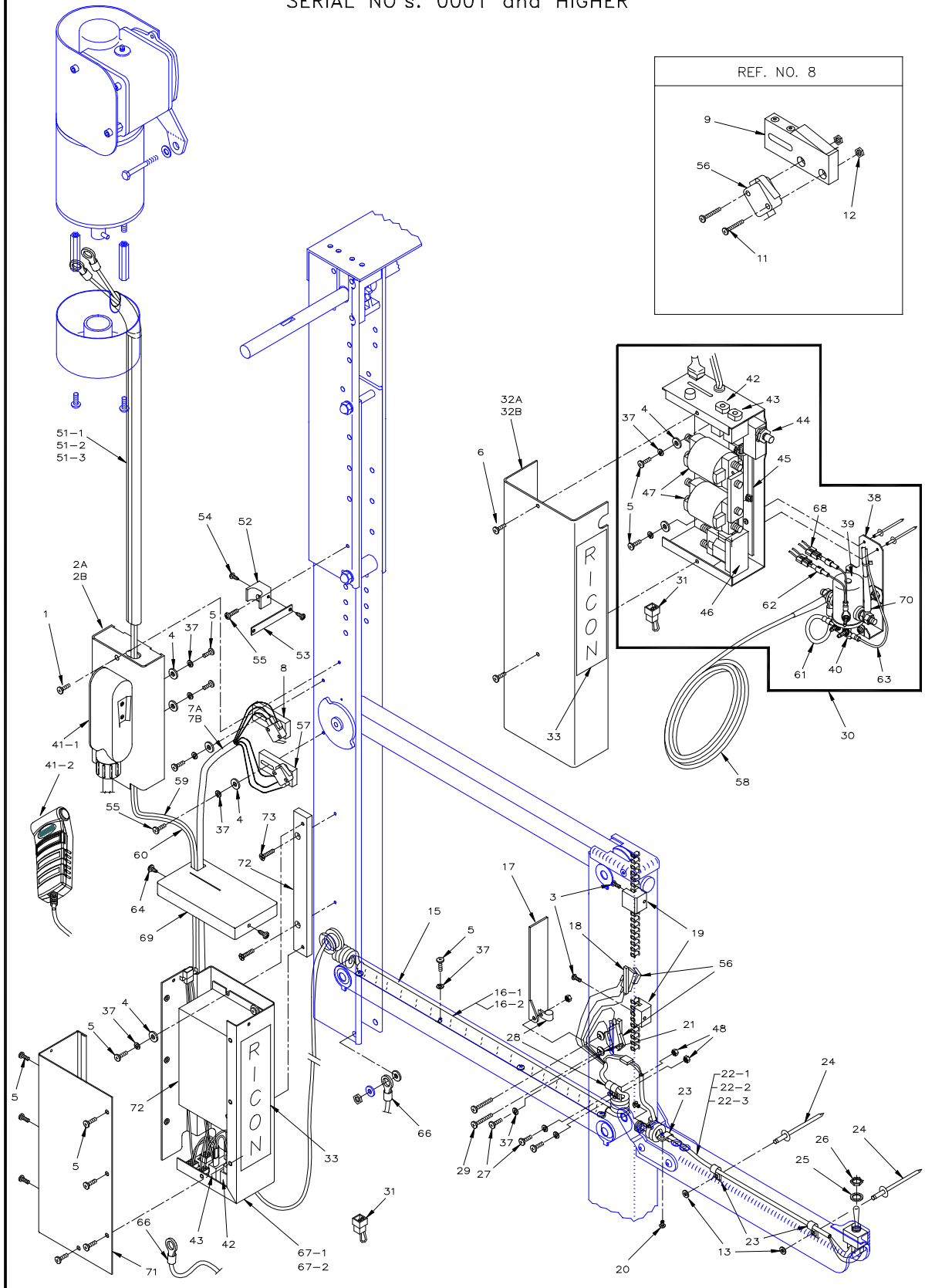


FIGURE 4-4: UNI-LITE ELECTRICAL ASSEMBLY

**FIGURE 4-4: UNI-LITE ELECTRICAL ASSEMBLY  
ALL MODELS  
SERIAL NO's. 0001 and HIGHER**

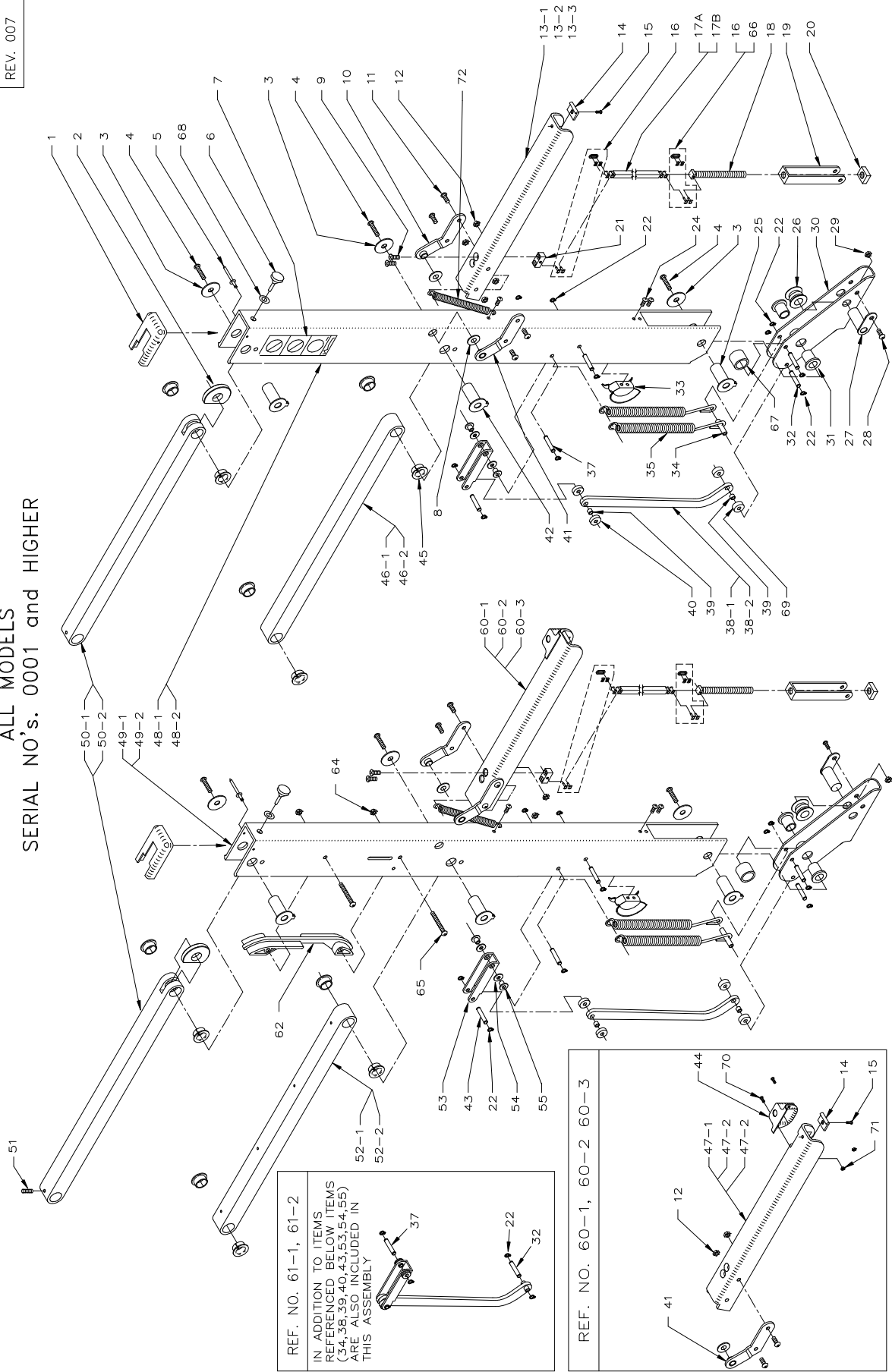
REF.	DESCRIPTION	QTY.	PART NO.
1	MS, 10-24 X 1/4 PHIL PAN	1	28105
2A	COVER, CAM ( S.N's. 0001-5719)	1	UL-AC-020
2B	COVER CAM, UNILITE ( S.N's. 5720- )	1	UL-AC-120
3	MS, 8-32 X 3/4 PHIL PAN	2	28072
4	WASHER, #10, FLAT, SAE	6	28271
5	MS, 10-24 X 3/8 PHIL PAN (BAG OF TEN)	6	15944
6	MS 8-32 X 3/8 PHIL PAN	2	28069
7A	HARNESS, SWITCH, CAM (S.N's 0001- 7724)	1	UL-ES-010
7B	HARNESS ASSY., CAM SWITCH, UNI-LITE (S.N's. 7725-)	1	UL-ES-115
8	SWITCH, ASSY., (UP/IN ENABLE) UNILITE	1	UL-ES-004
9	ASSY, SWITCH BLOCK	2	V2-ES-82
11	SCREW, SLOTTED HD, RND 4-40 X 1-1/2 (BAG OF TEN)	4	15909
12	NUT, HEX, 4-40, PLATED (BAG OF TEN)	4	15903
13	WASHER # 4 FLAT	2	28265
14	SPACER, ELECTRICAL BOX	2	UL-ES-014
15	HARNESS, PLATFORM POST	1	UL-ES-009
16-1	CLAMP, P-POST HARNESS, STD	1	UL-AC-060
16-2	CLAMP, P-POST HARNESS, SHORT (U6-2636)	1	UL-AC-061
17	COVER, LIMIT SWITCH	1	UL-AC-023
18	BLOCK, PLASTIC	1	UL-AC-011
19	BRACKET, CHAIN	2	UL-DS-007
20	MS, 8-32 X 1/4 PHIL PAN	2	28067
21	BUSHING, NYLON	2	UL-PF-011
22-1	HARNESS, SWITCH, HANDRAIL, STD	1	UL-ES-011
22-2	HARNESS, SWITCH, HANDRAIL, LONG	1	UL-ES-411
22-3	HARNESS, ARM SWITCH, SHORT	1	UL-ES-021
23	CLAMP, 3/16, CABLE	4	25514
24	RIVET, 1/8 X 1/2	2	14-30-303
25	WASHER, SWITCH, TOGGLE	1	28346
26	NUT, SWITCH, TOGGLE	1	28347
27	MS, 10-24 X 1/2 PHIL PAN	3	28111
28	CLAMP, 3-WIRE CORD	3	25516
29	MS, 4-40 X 1, PHIL PAN	2	28032
30	ASSY, ELECTRICAL BOX (S.N's. 0001-7724)	1	UL-ES-012
31	PLUG, SHORTING	1	UL-ES-007
32A	COVER, ELECTRICAL (S.N's. 0001-6295)	1	UL-AC-025
32B	COVER, ELECTRICAL (S.N's. 6296-7724)	1	UL-ES-125
33	DECAL, VERTICAL "RICON"	1	32-10-149
34	CONDUIT, PLASTIC	1	27201
35	TIE, CABLE, SMALL	2	25519
36	CABLE TIE-5.5"	3	25520
37	WASHER # 10 SPLIT LOCK (BAG OF TEN)	16	15941
38	BRACKET-SAFETY SOLENOID-UNILITE (S.N's. 6296-7724)	1	UL-ES-037
39	SOLENOID, SINGLE POLE SINGLE THROW, 12V S.N.'s. 6296-7724)	1	26444
40	CIRCUIT BREAKER-BR8 (1908) 12V 8A (S.N's. 6296-7724)	1	26401
41-1	PENDANT, HAND CONTROL	1	UL-ES-100
41-2	PENDANT, UNIVERSAL CONTROL	1	14727
42	BREAKER, CIRCUIT, 8 AMP	1	265108
43	BREAKER, CIRCUIT, 30 AMP	1	26510
44	SWITCH, LIMIT, SPDT, ASSY.	1	UL-ES-022
45	ASSY, RESISTOR, RETRO-FIT, UNILITE (S.N's. 0001-7724)	1	UL-ES-017
46	SOLENOID, SP MODIFIED R30B & R60 (S.N's. 00001-7724)	1	03011
47	SOLENOID, 12V DP LARGE (S.N's. 0001-7724)	1	26447
48	NUT-HEX 10-24 NYLON INSERT	3	28305
50	WASHER, NYLON, .641ID X .904OD X .015TK	2	28577
51-1	TUBE, ELECTRICAL 16.75 ( S.N's. 5720- )	1	UL-ES-025
51-2	TUBE, ELECTRICAL 20.75 ( S.N's. 5720- )	1	UL-ES-026
51-3	TUBE, ELECTRICAL 28.75 ( S.N's. 5720- )	1	UL-ES-027
52	SPACER, ELECTRICAL SYSTEM UNILITE ( S.N's. 5720- )	1	UL-ES-028
53	STRAP, ELECTRICAL TUBE ( S.N's. 5720- )	1	UL-ES-029
54	MS, 8-32 X 1/2, PAN HEAD PHIL THRD. CUTTG. ( S.N's. 5720- )	2	28079
55	MS, 10-24 X 3/4 PHIL PAN (S.N.'s. 5720- ) (BAG OF TEN)	1	15957
56	SWITCH, LIMIT, (UP/DOWN CUTOFF) UNILITE	4	UL-ES-110
57	SWITCH, ASSY., (DOWN/OUT ENABLE) UNILITE	1	UL-ES-024
58	CABLE ASSY-POWER (S.N's. 6296-7724)	1	03006
59	JUMPER-60" MOTOR LEAD BLACK (S.N's. 7725-)	1	UL-ES-117
60	JUMPER-60" MOTOR LEAD WHITE ( S.N's. 7725-)	1	UL-ES-118
61	ELW02045/26388/26389R30B (S.N's. 6296-7724)	1	ELJ02096
62	HARNESS-SAFETY SOLENOID ACTUATION (S.N's. 6296-7724)	1	UL-ES-031
63	JUMPER-SAFETY SOLENOID TO 5A BREAKER (S.N's. 6296-7724)	1	UL-ES-033

REF.	DESCRIPTION	QTY.	PART NO.
64	MS, 10-24 X 1/2, PHIL, PAN, SELF THRD (S.N's. 6296-)	2	28111T
65	CONTROLLER-12V UNI-LITE (S.N's. 7725-)	1	UL-ES-112
66	JUMPER-GROUND STRAP UNI-LITE (S.N's. 7725-)	1	UL-ES-119
67-1	ELECTRICAL-BOX ASSEMBLY UNI-LITE (S.N's. 7725- 7886)	1	UL-ES-130
67-2	ELECTRICAL-BOX ASSEMBLY UNI-LITE (S.N's. 7887-)	1	10244
68	HARNES-PENDANT DIODE BLOCK (S.N's. 6296-7724)	1	UL-ES-032
69	COVER TOP, ELECTRICAL BOX (S.N's. 7725-)	1	UL-AC-121
70	JUMPER-POWER FROM SAFETY SOLENOID (S.N's. 6296-7724)	1	UL-ES-036
71	COVER, UNI-LITE ELECTRICAL FRONT (S.N's. 7725-)	1	UL-ES-150
72	CONTROLLER, 12V, 9V CUT-OFF; UNILITE	1	UL-ES-122

This page intentionally left blank.

DATE: 05-15-02  
 DWG. 32DUPFPO  
 REV. 007

UNI-LITE  
 PLATFORM POST ASSEMBLY  
 ALL MODELS  
 SERIAL NO's. 0001 and HIGHER



REF. NO. 61-1, 61-2  
 IN ADDITION TO ITEMS  
 REFERENCED BELOW ITEMS  
 (34, 38, 39, 40, 43, 53, 54, 55)  
 ARE ALSO INCLUDED IN  
 THIS ASSEMBLY

REF. NO. 60-1, 60-2, 60-3

FIGURE 4-5: UNI-LITE PLATFORM POST ASSEMBLY

**FIGURE 4-5: UNI-LITE PLATFORM POST ASSEMBLY  
ALL MODELS  
SERIAL NO's. 0001 and HIGHER**

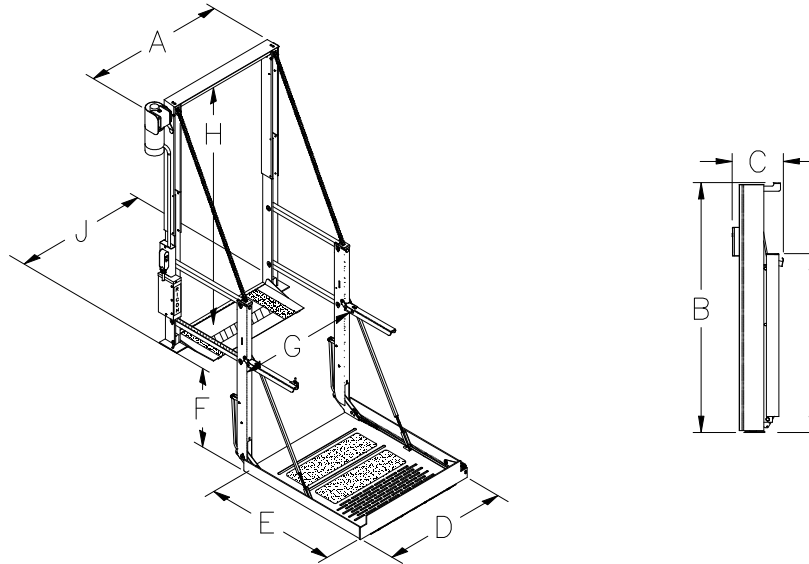
REF.	DESCRIPTION	QTY.	PART NO.
1	CAP, PLATFORM POST	2	UL-AC-021
2	CHAIN GUIDE, LINK ARM	2	UL-AC-003
3	WASHER, FENDER, 5/16 ID X 1-1/4 OD BLK. OXD. SST (BAG OF TEN)	6	15921
4	SOCKET, BUTTON HD, 5/16-18 X 3/4 BLK. OXD. SST	6	28820
5	RIVET, 1/8 X 1/2, BLIND ALUM	4	14-30-303
6	BUMPER, RUBBER	2	V2-AC-86
7	DECAL, PROPER LOADING	2	26183
8	WASHER, NYLON, 0.64 ID X 0.90 OD X 0.015 THK	4	28577
9	SOCKET, FLAT, 1/4-20 X 3/4	4	28184
10	BKT, HANDRAIL SUPPORT, WELD ASSY, R.H.	2	UL-AC-033
11	SOCKET, BUTTON HD, 1/4-20 X 5/8 BLK. OXD. SST (BAG OF TEN)	8	15938
12	NUT, HEX, 1/4-20	8	28308
13-1	HANDRAIL, SUPPORT, STD	1	UL-AC-012
13-2	HANDRAIL, SUPPORT, SHORT	1	UL-AC-042
13-3	HANDRAIL, SUPPORT, LONG	1	UL-AC-412
14	SKID, BRIDGEPLATE	2	UL-BA-021
15	MS, 10-24 X 1/4, PHIL FLAT, UNDERCUT	2	28106
16	MASTER LINK CHAIN	2	25049
17A	TUBING, GREY VINYL, 5/8" ID X 2FT	2	UL-AC-075
17B	CHAIN #40, NICKEL PLATED	2	UL-AC-002
18	ANCHOR, SUPPORT CHAIN	2	UL-AC-046
19	CLEVIS, SUPPORT CHAIN, ANCHOR	2	UL-AC-045
20	NUT, 7/16-14 SQUARE	2	28362
21	CHAIN, ANCHOR	2	UL-AC-010
22	RING, RETAINING, 1/4	20	14-31-025
23	SOCKET, BUTTON HD, 1/4-20 X 1/2	4	28182
24	MS, 10-24 X 1/2, PHIL PAN	4	28111
25	ASSY, WELD, PIN, BKT PIVOT	2	UL-AC-049
26	ROLLER, CHAIN	2	UL-PF-015
27	ASSY, WELD, PIN, ROLLER, CHAIN	2	UL-AC-048
28	MS, 10-24 X 3/8, PHIL PAN (BAG OF TEN)	2	15944
29	NUT, HEX, 10-24 (BAG OF TEN)	2	14489
30	PIVOT BRACKET	2	UL-PF-002
31	BEARING, FLANGE 1012-10FL 16OZ	4	25379
32	PIN, 0.250 DIA, SNAP RING X 1.13	4	UL-AC-036
33	CHAIN GUIDE, POST	2	UL-AC-005
34	BUSHING, BRONZE	2	25319
35	SPRING, UNFOLD, KICKOUT	4	25436
36	PAD, CHAIN GUIDE	4	UL-AC-034
37	PIN, 0.250 DIA, SNAP RING X 1.78	4	UL-AC-038
38-1	LINK, KICKOUT	2	UL-PF-019
38-2	LINK, KICKOUT, SHORT	2	UL-PF-029
39	BUSHING, BRONZE, 0405-04	4	25318
40	ROLLER, KICKOUT	4	UL-PF-017
41	BKT, HANDRAIL SUPPORT, WELD ASSY, L.H.	2	UL-AC-032
42	ASSY, WELD, PIN, LINK ARM	4	UL-AC-047
43	PIN, 0.250 DIA	2	UL-AC-035
44	SWITCH, COVER	1	UL-AC-018
45	BUSHING-DU FLG, 3/4 ID X 1/4 L	12	25386
46-1	ARM, PARALLEL, BOTTOM, STD	1	UL-AC-007
46-2	ARM, PARALLEL, BOTTOM, SHORT	1	UL-AC-051
47-1	HANDRAIL, SWITCH, L.H., STD	1	UL-AC-017
47-2	HANDRAIL, SWITCH, L.H., SHORT	1	UL-AC-043
47-3	HANDRAIL, SWITCH, LH, LONG	1	UL-AC-417
48-1	POST, PLATFORM, STD	1	UL-AC-015
48-2	POST, PLATFORM, STD, SHORT	1	UL-AC-054
49-1	POST, PLATFORM, L.H.	1	UL-AC-019
49-2	POST, PLATFORM, L.H., SHORT	1	UL-AC-053
50-1	ARM, PARALLEL, UPPER	2	UL-AC-006
50-2	ARM, PARALLEL, UPPER, SHORT	2	UL-AC-050
51	SOCKET SET, SCREW, 1/4-20 X 3/8	2	28652
52-1	ARM, PARALLEL, BOTTOM, L.H.	1	UL-AC-041
52-2	ARM, PARALLEL, BOTTOM, L.H., SHORT	1	UL-AC-052
53	KICKOUT, CHANNEL	2	UL-PF-018
54	WASHER	4	28277
55	BEARING, FLANGE, 0406-06	4	25378
60-1	ASSY, HANDRAIL, SWITCH, STD	1	UL-AC-058
60-2	ASSY, HANDRAIL, SWITCH, SHORT	1	UL-AC-059
60-3	ASSY, HANDRAIL, SWITCH LONG	1	UL-AC-458
61-1	ASSY, KICKOUT STD	1	UL-PF-033

REF.	DESCRIPTION	QTY.	PART NO.
61-2	ASSY, KICKOUT SHORT	1	UL-PF-133
62	GUIDE, CHAIN	1	UL-AC-072
64	NUT-HEX 1/4-20 PLATED THIN	2	14-08-304
65	SOC. BUTTON, 1/4-20 X 2	2	28161
66	TUBING, GREY VINYL, 5/8 ID X 2 FT.	2	UL-AC-075
67	SPACER, PVC, 0.81 ID X 0.87 L	2	UL-AC-062
68	WASHER 3/8 FLAT, SAE	2	28283S
69	KICK-OUT, ROLLER 0.310/0.304 THK.	4	UL-PF-016
70	MS-6-32 X 0.375 PAN PHIL	2	28043
71	NUT-6-32	2	28301
72	SPRING, EXTENSION, .25 OD X 3.0 LG	2	254618



## APPENDIX 1 LIFT SPECIFICATIONS

<b>UNI-lite WHEELCHAIR LIFT</b>	
Power ..... electro-mechanical Motor rating ..... 12 Volt DC, 63 amp avg./cycle Lift weight ..... 160 lbs.	Rated load capacity ..... 600 lbs. Manual backup ..... speed-wrench operated



### DIMENSIONS (inches)

MODEL	A	B	C	D	E	F <sub>1</sub>	F <sub>2</sub>	G	H	I	J
	Width, Stationary Frame	Height, Lift	Installation Depth (Folded)	Usable Platform Width	Usable Platform Length	Floor-to- Ground Travel (Stepwell)	Floor-to- Ground Travel (Flat Floor)	Width, Traveling Frame	Clear Entry Height	Floor to End of Platform, folded	Width, Base Plate
U6-2636	37	47-57	11.5	26	36	NA	24	31	44-54	41	33.5
U6-2639	37	47-57	11.5	26	39	30	28	31	44-54	44	33.5
U6-2644	37	47-57	11.5	26	44	30	28	31	44-54	49	33.5
U6-2940	40	50-57	11.5	29	40	30	28	34	47-54	45	36.5
U6-2944	40	50-57	11.5	29	44	30	28	34	47-54	50	36.5
U6-3240	43	50-57	11.5	32	40	30	28	37	47-54	45	39.5
U6-3244	43	50-57	11.5	32	44	30	28	37	47-54	50	39.5
U6-2940T	40	59-65	11.5	29	40	30	28	34	56-62	45	36.5
U6-2944T	40	59-65	11.5	29	44	30	28	34	56-62	50	36.5
U6-3240T	43	59-65	11.5	32	40	30	28	37	56-62	45	39.5
U6-3244T	43	59-65	11.5	32	44	30	28	37	56-62	50	39.5