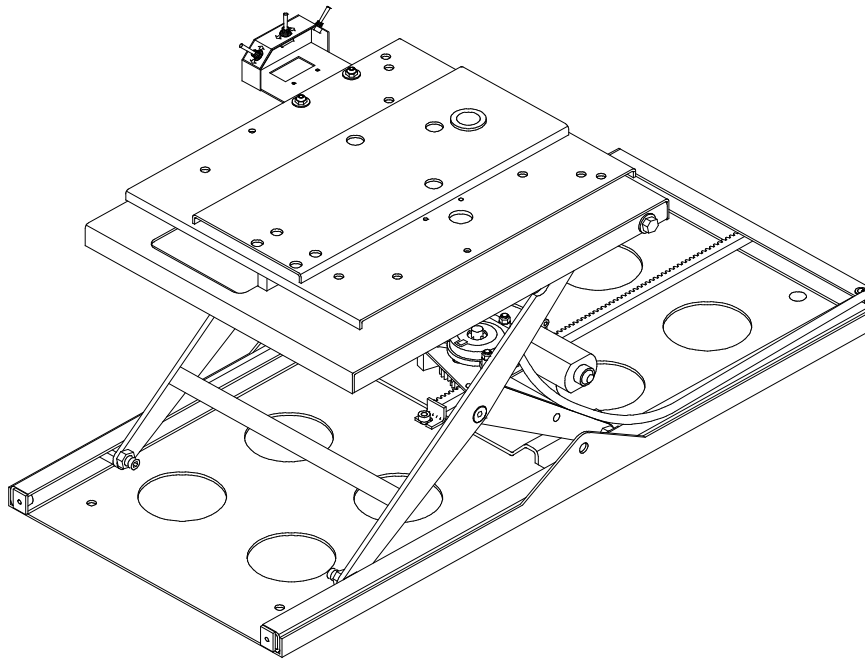


IV. PARTS DIAGRAMS AND LISTS

This chapter contains parts diagrams and lists for the RICON R1208 Six-Way Power Seat Base. The parts diagrams are exploded views of lift components with individual components referenced by numbers. The accompanying parts list contains the reference number, a description, the quantity used, and the Ricon stock number. For parts identification, locate the part on the appropriate drawing and note the reference number. The parts list that accompanies each drawing will list the stock number of the desired part.



PRODUCT MODEL AND KIT NUMBERS	
PRODUCT NUMBER	R1208, R1208-E & R1208-L
DOCUMENTATION KIT NUMBER	01063
SPARE DECAL KIT NUMBER	26011

PARTS DIAGRAMS..... PAGE

FIGURE 4-1: POWER SEAT BASE #1..... 4-2

FIGURE 4-2: POWER SEAT BASE #2..... 4-6

POWER SEAT BASE SPECIFICATIONS..... 4-9

POWER SEAT BASE
 MODEL: R-1208
 SERIAL NO's. 72500-74999
 SERIAL NO's. 75000-77199

DATE: 10/09/95
DWG. PSB00001
REV. 006

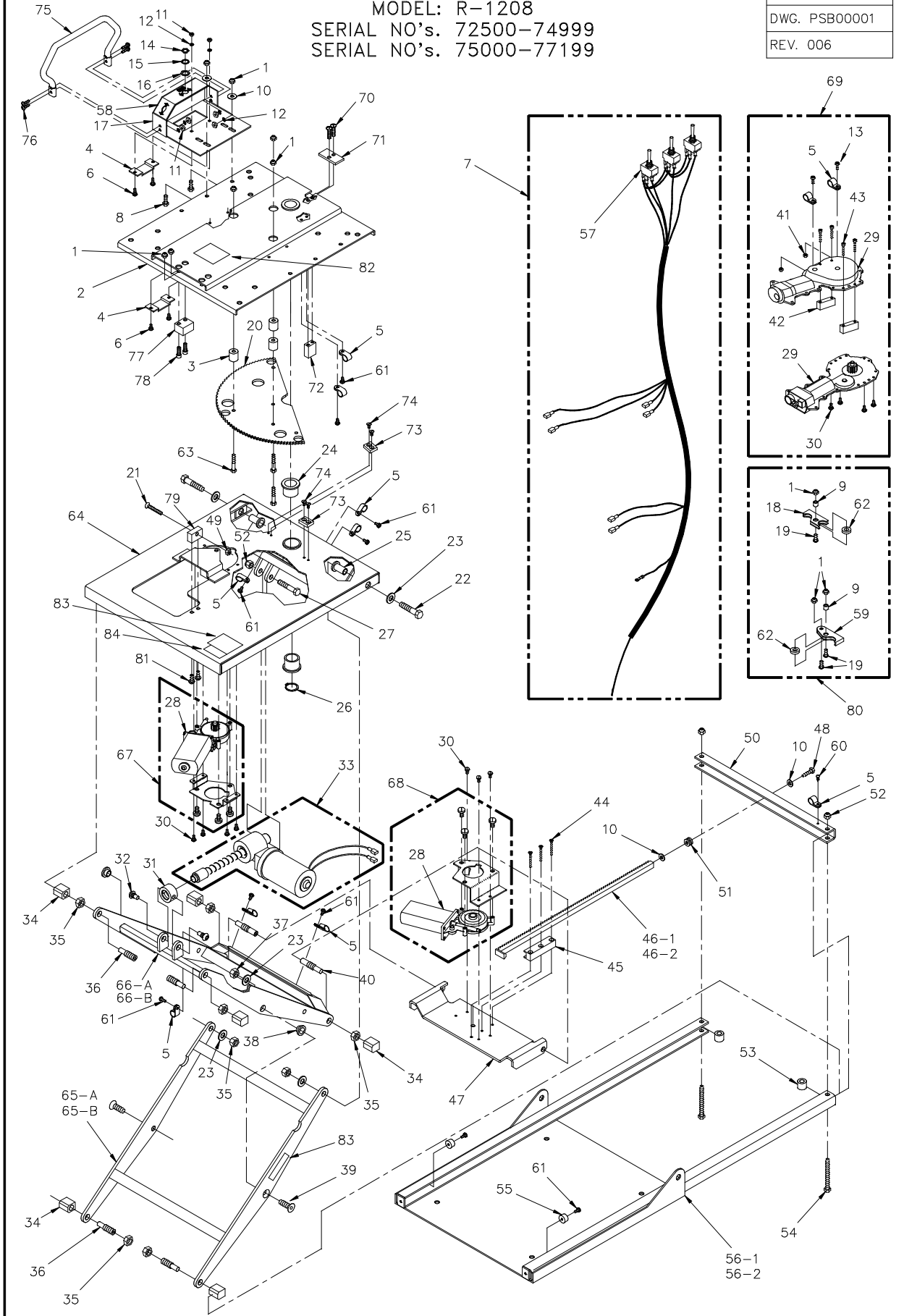


FIGURE 4-1: POWER SEAT BASE #1

32DSB02.A

POWER SEAT BASE #1
MODEL: R1208
SERIAL NO's. 72500-74999
SERIAL NO's. 75000-77199

REF.	DESCRIPTION	QTY.	PART NO.
1	NUT-HEX 1/4-20 NYLON INSERT (BAG OF TEN)	10	15919
2	ASSY., WELD, SWIVEL PLATE	1	PS-1128
3	SPACER, SWIVEL GEAR	3	PS-1124
4	CLAMP, FLAT PLASTIC	2	PS-1068
5	CLIP, 1/2 PLASTIC (SMITH8916) BLACK	11	25533
6	MS, 10-24 X 1/4 PHIL PAN	4	28105
7	HARNESS, POWER SEAT BASE	1	PS-1069
8	BOLT, HEX 1/4-20 X 3/4 GR5	2	28166
9	BUSHING, STEEL, 0.25 X 0.38 X 0.35	2	PS-1193
10	WASHER, 1/4 FLAT SAE	2	28273
11	NUT-HEX 10-24 (BAG OF TEN)	6	14489
12	WASHER #10 SPLIT LOCK (BAG OF TEN)	6	15941
13	MS 10-24 X 1/2 PHIL PAN	2	28111
14	NUT, U-550, TOGGLE SWITCH	3	28347
15	STAR WASHER, TOGGLE SWITCH, U-109	3	28346
16	LOCATING RING, TOGGLE SWITCH, U-108 (BAG OF TEN)	3	15905
17	CONTROL BOX ASSY	1	PS-1051
18	STOP, CENTER, SWIVEL GEAR	1	PS-1195
19	SOCKET BUTTON, 1/4-20 X 5/8	3	28162
20	GEAR, SWIVEL	1	PS-1113
21	MS 1/4-20 X 1-1/4 PHIL FLAT	1	28195
22	BOLT-HEX 7/16-14 X 2 GR5	2	28257
23	WASHER 7/16 FLAT	4	28291
24	BEARING, BRONZE, 1620-16 FL 2402	2	25306
25	SPACER, FLANGED, UPPER FRAME	2	PS-0052
26	RING, EXTERNAL RETAIN 1"	1	14-31-100
27	BOLT-HEX 3/8-16 X 2 GR5	1	28237
28	MOTOR-DELCO PH3 MODIFIED	2	V2-ES-040
29	GEAR MOTOR, DELCO PHASE II, 12V DC	2	25480
30	MS, 8-32 X 1/4 PHIL PAN	11	28067
31	NUT, SCISSORS ACTUATOR	1	PS-1046
32	SCREW, SPECIAL, ACTUATOR NUT	2	PS-1059
33	ASSY, SCISSOR ACTUATOR	1	PS-1140
34	BEARING, SLIDE	6	PS-0031
35	NUT-HEX, 1/2-20 JAM	6	28489
36	PIN, SLIDE BEARING ADJUSTMENT X 1.50	4	PS-0032
37	NUT-HEX 7/16-14	4	28336
38	SPACER, FLANGED, SCISSORS	2	PS-0063
39	SCREW, SOCKET FLAT HEAD 7/16-14 X 1.25	2	28620
40	PIN, SLIDE BEARING ADJUSTMENT X 2.25	2	PS-0033
41	NUT-HEX 10-24 NYLON INSERT	2	28305
42	BLOCK, MOTOR SUPPORT	2	PS-1010
43	SOCKET CAP, 8-32 X 1	4	28094
44	MS 8-32 X 7/8 PHIL FLAT	3	28081
45	GUIDE, WELD, RACK GEAR	1	PS-1009
46-1	ASSY, WELD, RACK GEAR +12	1	PS-1017
46-2	ASSY, RACK GEAR +12	1	PS-1217
47	PLATE, HORIZONTAL DRIVE	1	PS-1012
48	BOLT-HEX 1/4-20 X 1 GR 5 (BAG OF TEN)	1	14493
49	NUT-HEX 1/4-20	1	28308
50	CHANNEL, REAR FRAME	1	PS-1005
51	GROMMET, 0.25 X 0.44 X 0.13 (X 0.63 X 0.38)	1	26649
52	NUT-HEX 5/16-18 NYLON INSERT	3	28314
53	P.V.C. SPACER BUSHING	2	VS-BU-06
54	BOLT-HEX 5/16-18 X 3 GR 5 FULL THREAD	2	282211
55	BUMPER RUBBER 315-009	2	VS-PL-02
56-1	ASSY., WELD, BASE FRAME - STD	1	PS-1004
56-2	BASE FRAME, WELD ASSY, +12	1	PS-1204
57	SWITCH, TOGGLE, DPDT (4 TABS) OLD RGB/PSB	3	26433
58	DECAL, CONTROL PANEL PSB	1	26112
59	STOP, END, SWIVEL GEAR	1	PS-1194
60	SMS #8 X 1/2 PHIL PAN HD TEK (BAG OF TEN)	1	15961

REF.	DESCRIPTION	QTY.	PART NO.
61	MS 10-24 X 3/8 PHIL PAN (BAG OF TEN)	12	15944
62	BUSHING, 0.38 X 0.75 X 0.19	2	PS-1192
63	BOLT-HEX 1/4-20 X 1-1/2 GR5	3	28168
64	ASSY., WELD, UPPER FRAME	1	PS-1105
65-A	SCISSOR ASSY., OUTER (FROM SERIAL #72500 TO SERIAL #74999)	1	PS-1021
65-B	ASSY., WELD-OUTER SCISSOR (FROM SERIAL #75000 TO PRESENT)	1	PS-1032
66-A	SCISSOR ASSY., INNER (FROM SERIAL #72500 TO SERIAL #74999)	1	PS-1025
66-B	ASSY., WELD-INNER SCISSOR (FROM SERIAL #75000 TO PRESENT)	1	PS-1031
67	KIT, UPPER MOTOR, RETRO FIT	1	01002
68	KIT, LOWER MOTOR, RETRO FIT	1	01003
69 *	DELCO PH2 MOTOR ASSY. USED ONLY FROM S/N 72500 TO S/N 74999	1	
70	SOCKET BUTTON HEAD SCREW BLK 1/4-20 X 1	2	28183
71	PLATE, MOUNT-REAR BLOCK	1	PS-1200
72	STOP, REAR BLOCK	1	PS-1198
73	PLATE, REAR STOP	2	PS-1199
74	SOCKET FLAT 10-24 X 3/8, SST (BAG OF TEN)	4	15962
75	GAURD, SWITCH-SAFETY	1	PS-1052
76	MS 10-24 X 5/8 PHIL PAN	4	28112
77	STOP, SWIVEL-DELTRIN BLOCK	1	PS-1202
78	SOCKET CAP 1/4-20 X 0.75	2	28208
79	STOP, SWIVEL-ADJUSTMENT	1	PS-1205
80 *	STOP MECHANISM. USED ONLY FROM S/N 72500 TO S/N 74999	1	*
81	SOCKET BUTTON, 1/4-20 X 5/8	2	28162
82	DECAL, UNPACKING INSTR,PSBASE	1	26203
83 **	DECAL,SERIAL#, "CE" UNIVERSAL	1	**
84	DECAL,PATENT# ; PENDING GENERIC	1	32-10-171

* Individual Parts Available Separately.

** Decal is in two parts. Only Ricon replaceable.

This page intentionally left blank.

**POWER SEAT BASE #2
R 1208
SERIAL NO'S. 77250 and HIGHER**

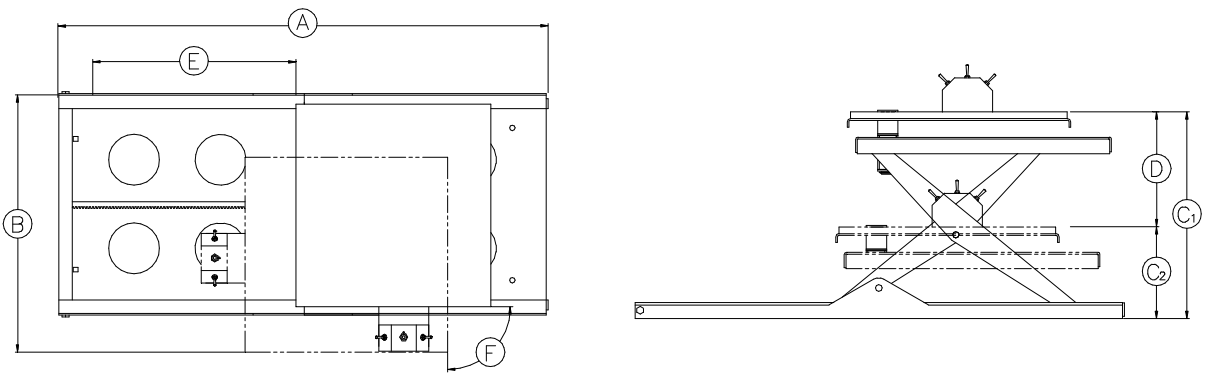
REF.	DESCRIPTION	QTY.	PART NO.
1	NUT-HEX 1/4-20 NYLON INSERT (BAG OF TEN)	12	15919
2	ASSY., WELD, SWIVEL PLATE	1	PS-1128
3	SPACER, SWIVEL GEAR	3	PS-1124
4	CLAMP, FLAT PLASTIC	2	PS-1068
5	CLAMP,NYL,1/2 PLASTIC (SMITH8916) BLACK	7	25533
6	MS, 10-24 X 1/4 PHIL PAN	4	28105
7	HARNESS, POWER SEAT BASE	1	PS-1069
8	BOLT, HEX 1/4-20 X 3/4 GR5	2	28166
9	BAR-REAR FRAME	1	PS-2004
10	WASHER 3/8 RUBER CUSHION	2	282802
11	NUT-HEX 10-24 (BAG OF TEN)	6	14489
12	WASHER #10 SPLIT LOCK (BAG OF TEN)	6	15941
13	WASHER, 1/4 FLAT SAE	3	28273
14	NUT, U-550, TOGGLE SWITCH	3	28347
15	STAR WASHER, TOGGLE SWITCH, U-109	3	28346
16	LOCATING RING, TOGGLE SWITCH, U-108 (BAG OF TEN)	3	15905
17	CONTROL BOX ASSY	1	PS-1051
18	STOP, SWIVEL-ADJUSTMENT	1	PS-1205
19	SOCKET BUTTON, 1/4-20 X 5/8	2	28162
20	GEAR, SWIVEL-BASE PLATE	1	PS-1112
21	MS 1/4-20 X 1 1/4 PHIL FLAT	1	28195
22	BOLT-HEX 7/16-14 X 2 GR5	2	28257
23	WASHER 7/16 FLAT	4	28291
24	BEARING, BRONZE, 1620-16 FL 2402	2	25306
25	SPACER, FLANGED, UPPER FRAME	2	PS-0052
26	SNAP RING, EXTERNAL RETAIN 1"	1	14-31-100
27	BOLT-HEX 3/8-16 X 2 GR5	1	28237
28	MOTOR-DELCO PH3 MODIFIED	2	V2-ES-040
29	MS 10-24 X 3/8 SLOT FLAT	2	28108
30	MS, 8-32 X 1/4 PHIL PAN	11	28067
31	NUT, SCISSORS ACTUATOR	1	PS-1046
32	SCREW, SPECIAL, ACTUATOR NUT	2	PS-1059
33	ASSY, SCISSOR ACTUATOR	1	PS-1140
34	BEARING, SLIDE	6	PS-0031
35	NUT-HEX, 1/2-20 JAM	6	28489
36	PIN, SLIDE BEARING ADJUSTMENT X 1.50	4	PS-0032
37	NUT-HEX 7/16-14	2	28336
38	SPACER, FLANGED, SCISSORS	2	PS-0063
39	STUD-WASSY	2	PS-2022
40	PIN, SLIDE BEARING ADJUSTMENT X 2.25	2	PS-0033
41	MOTOR DRIVE-ASSY (FOR S/N 77199 AND BELOW USE P/N 01297)	1	PS-2046
42	BLOCK, STANDOFF	2	PS-2042
43	SCREW, FHP, 1/4-20 X 2.00	4	28190
44	SCREW, HEX, 8-32 X 1 BLK OXD	3	28094
45	GUIDE, WELD, RACK GEAR	1	PS-1009
46-1	GEAR, RACK-WASSY, STANDARD	1	PS-2037
46-2	GEAR, RACK-WASSY, EXTENDED	1	PS-2038
47	PLATE, HORIZONTAL DRIVE	1	PS-2041
48	BOLT-HEX 1/4-20 X 1 GR 5 (BAG OF TEN)	1	14493
49	NUT-HEX 1/4-20	1	28308
55	BUMPER RUBBER 315-009	2	VS-PL-02
56-1	PLATE, FRAME-WASSY, STANDARD	1	PS-2001
56-2	PLATE, FRAME-WASSY, EXTENDED	1	PS-2101
57	SWITCH, TOGGLE, DPDT (4 TABS) OLD RGB/PSB	3	26433
58	DECAL, CONTROL PANEL PSB	1	26112
50	BOLT-CARRIAGE, 5/16-18 X 3/4L, GR5 PL	2	282293
51	STANDOFF-GEAR MOUNT	1	PS-2006
52	NUT-HEX 5/16-18 NYLON INSERT	3	28314
53	WASHER 1/4 SPLIT LOCK	2	28274
54	SOCKET BUTTON 1/4-20 X 1/2	2	28182
59	GUARD, SWITCH-SAFETY	1	PS-1052
60	SMS #8 X 1/2 PHIL PAN HD TEK (BAG OF TEN)	1	15961
61	MS 10-24 X 3/8 PHIL PAN (BAG OF TEN)	12	15944
62	MS 10-24 X 5/8 PHIL PAN	4	28112
63	BOLT-HEX 1/4-20 X 1-1/2 GR5	3	28168

REF.	DESCRIPTION	QTY.	PART NO.
64	ASSY., WELD, UPPER FRAME	1	PS-1105
65	SOCKET FLAT 10-24 X 3/8, SST (BAG OF TEN)	4	15962
66	ASSY, SCISSOR FRAME	1	PS-1310
67	MOTOR, ASSEMBLY-UPPER	1	PS-1106
68	STOP, SWIVEL, DELRIN BLOCK	1	PS-1202
69	SOCKET CAP 1/4-20 X 0.75	2	28208
70	SOCKET BUTTON HEAD SCREW BLK 1/4-20 X 1	2	28183
71	PLATE, MOUNT-REAR BLOCK	1	PS-1200
72	STOP, REAR BLOCK	1	PS-1198
73	PLATE, REAR STOP	2	1 PS-1199
74	GEAR, DRIVE		1 PS-2010
75	BEARING-THRUST .375 ID X .625 OD X .0585	2	25375
76	BUSHING-FLANGE, 0.38 ID X 0.25L	2	253845
77	NUT-HEX 3/8-16 NYLON INSERT (BAG OF TEN)	3	15931
78	BUSHING-FLANGE, 0.50 ID X 0.25 L	2	253846
79	WASHER, STEEL-0.508 I.D. X 0.749 O.D. X 0.045 THK	2	282821
80	SPACER, REAR FRAME	1	10887
81	STANDOFF-BRIDGEPLATE ACTUATOR PIVOT	1	F9-0234
82	SCREW, CAR, 5/16-18 X 1 3/4	1	10888
83	WASHER, SPL, #8 (BAG OF TEN)	3	15913
84	PLATE, STIFFENER, GEAR GUIDE	1	PS-2035
85-1	DRIVE, HORIZONTAL-ASS'Y. - STD	1	PS-2047
85-2	DRIVE, HORIZONTAL-ASSY EXT.	1	PS-2045
86	SCREW, HEX, 1/4-20 X 1 1/4 SST	3	281691
87	DECAL, UNPACKING INSTR,PSBASE	1	26203
88 *	DECAL,SERIAL#, "CE" UNIVERSAL	1	*
89	DECAL,PATENT# ; PENDING GENERIC	1	32-10-171

* Decal is in two parts. Only Ricon replaceable.

APPENDIX 1 POWER SEAT BASE SPECIFICATIONS

Power	Electrical
Motor rating - vertical	12 Volt DC, 16 Amp avg./cycle
Motor rating - horizontal	12 Volt DC, 9 Amp avg./cycle
Motor rating - swivel	12 Volt DC, 5 Amp avg./cycle
Rated load capacity	300 pounds
Seatbase weight	95 lbs.



REF	A	B	C ₁	C ₂	D	E	F
DIMENSIONS (inches)							
Product	Length	Width	Height, highest position	Height, lowest position	Vertical travel	Forward/reverse travel	Swivel
R1209	36.25	16.31	15.50	6.25	9.25	13.63	172 degrees (90 deg right and 82 deg left)

This page intentionally left blank.