

II. INSTALLATION

This chapter provides instructions for installing the RICON R1250 Power Parking Brake. The Power Parking Brake must be installed by an authorized Ricon service technician. Make sure that these instructions are read and understood before proceeding. Be certain that the installation instructions are followed exactly and do not eliminate any steps or modify the product. Perform the procedures carefully and in the order that they are presented. If any questions arise that are not covered in this chapter, contact Ricon Product Support for assistance.

A. REQUIRED TOOLS

C-clamp or locking pliers
3/64", 1/4", 5/32", & 1/2" drill bits
Electric drill
Round file
Hammer with plastic tip
Screwdrivers (Phillips and flat)
Side cutter pliers
Socket set
Wire crimping tool
Wrenches, open-end

B. PREPARATION OF POWER PARKING BRAKE

Remove Power Parking Brake and all accessories from packaging. Notify Ricon immediately if any part listed in the packing list is missing. Notify shipper if any part has been damaged in shipment.

C. VEHICLE PREPARATION

- Safely park vehicle on a flat, level surface and turn off engine.
- Be certain the transmission is set to PARK and the wheels are blocked.
- The Power Parking Brake must be mounted directly to the metal floor of the vehicle. Clear vehicle floor area of all loose material. Remove carpet, floor mats, molding, wall panels, or any other material that may interfere with the installation.

D. MECHANICAL INSTALLATION

To install the Power Parking Brake, follow this procedure:

1. Refer to **Figure 2-3**. If necessary, drill a 1/4" hole in the parking brake lever, just behind the pedal. This hole will be used to attach the wire cable.
2. Refer to **Figures 2-1** thru **2-3**. Position the Power Parking Brake assembly under the parking brake lever as close as possible to the vehicle firewall and side panel. If possible, mount with the motor against the vehicle side panel. Be certain to align the Power Parking Brake spindle under the hole drilled in the parking brake lever.

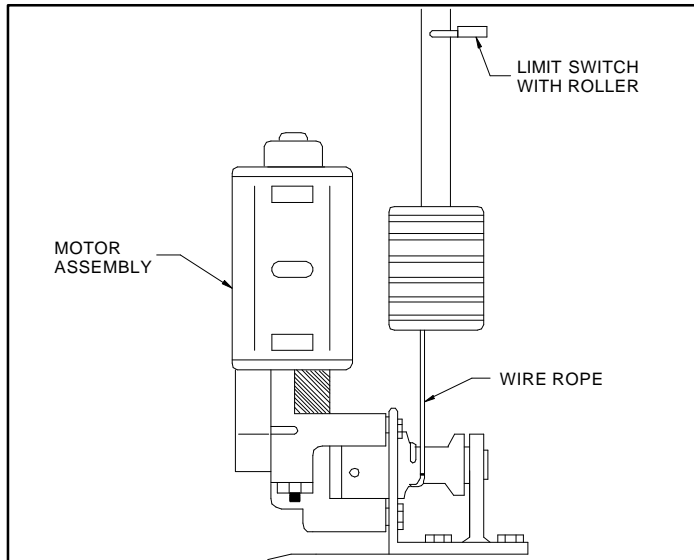


FIGURE 2-1: FRONT VIEW OF LEFT-SIDE POWER PARKING BRAKE

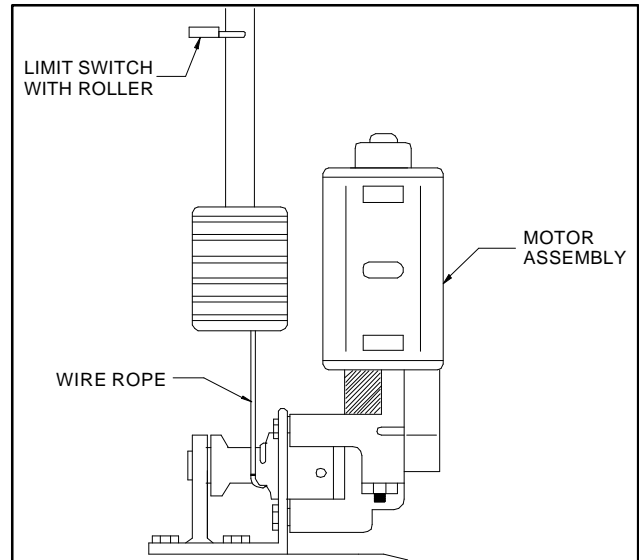


FIGURE 2-2: FRONT VIEW OF RIGHT-SIDE POWER PARKING BRAKE

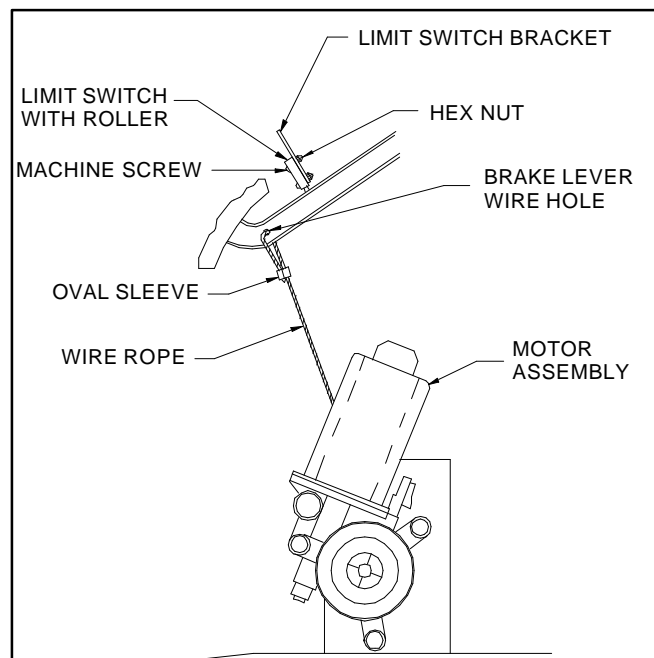


FIGURE 2-3: SIDE VIEW OF RIGHT-INSTALLED POWER PARKING BRAKE

3. Mark the three mounting holes and remove the Power Parking Brake.

CAUTION!

Check vehicle before drilling. Do not drill into factory wiring, hydraulic lines, fuel lines, fuel tank, etc.

4. At the marked mounting hole locations, drill three 3/64" holes through the vehicle floor.

5. Refer to **Figure 2-4**. Fasten the Power Parking Brake. Use the three hex bolts, washers, and hex nuts supplied. Be certain the bolts do not extend past the nuts into the wheel well. Remove the ends

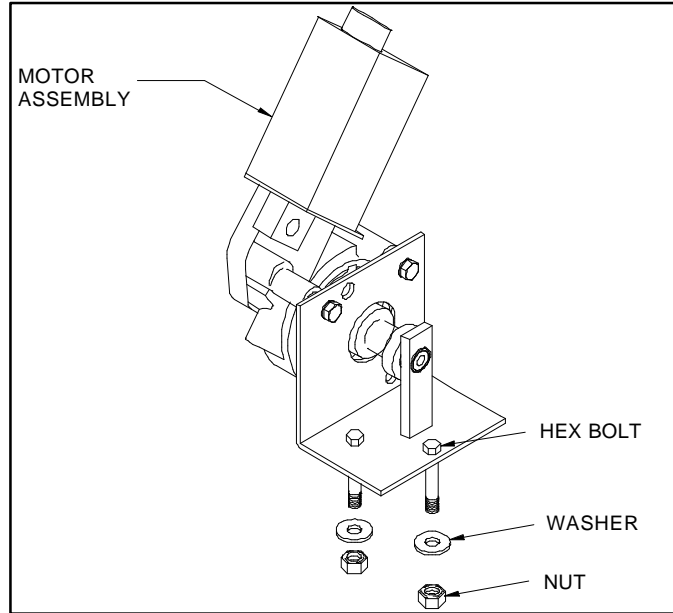


FIGURE 2-4: VEHICLE FLOOR MOUNTING

of the bolts, if necessary.

6. Refer to **Figure 2-5**. Using the two machine screws and hex nuts provided, attach the limit switch (with roller) to limit switch bracket.

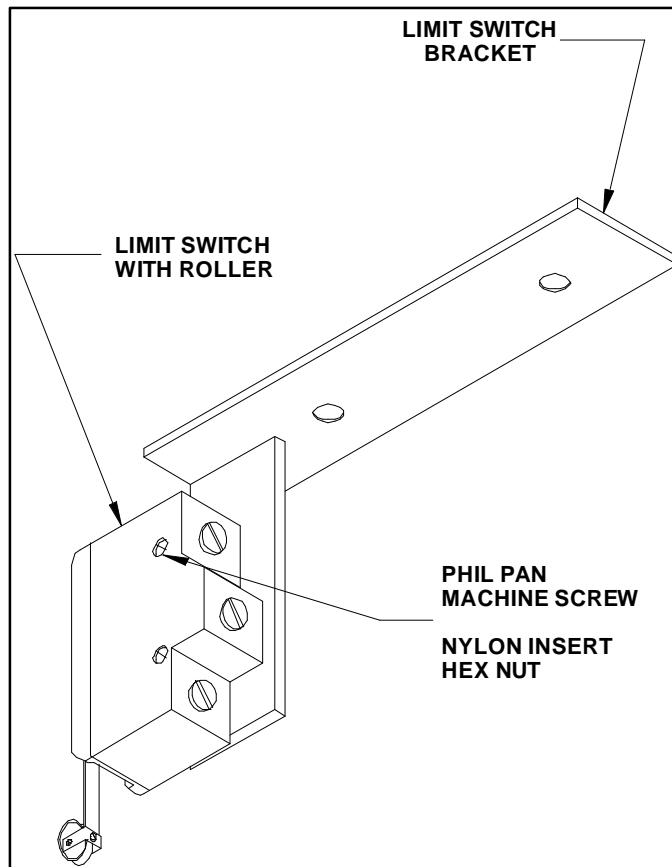


FIGURE 2-5: LIMIT SWITCH ATTACHMENT TO BRACKET

7. The limit switch bracket is mounted on the underside of the vehicle dash (control holes panel). Position the bracket so the limit switch is activated when the parking brake is released (or not set).
8. Drill two .164" (5/32) holes and use two of the #8 sheet metal screws to attach the switch bracket.

9. Refer to **Figure 2-6**. Be certain the parking brake lever is in the released position and place the Power Parking Brake clamp on the parking brake handle. Secure the clamp to the parking brake handle and tighten.

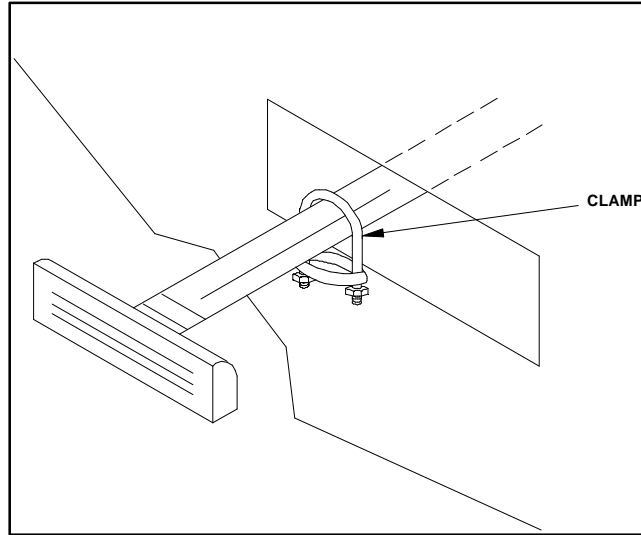


FIGURE 2-6: PARKING BRAKE CLAMP ATTACHMENT

10. Place the oval sleeve around one end of the wire cable. Thread the wire cable through the hole in the parking brake. Tighten the oval sleeve.
11. Loosen the set screw on the spindle and feed the other end of the wire cable through the spindle. Cut off excess wire and tighten the setscrew.
12. Position the toggle switch in a location that is safe and convenient for the user. Drill a 1/2" hole. (Do not install the toggle switch at this time.)
13. Reinstall vehicle carpet, floor mats, molding, wall panels, or other materials that were removed for the installation.

E. ELECTRICAL INSTALLATION

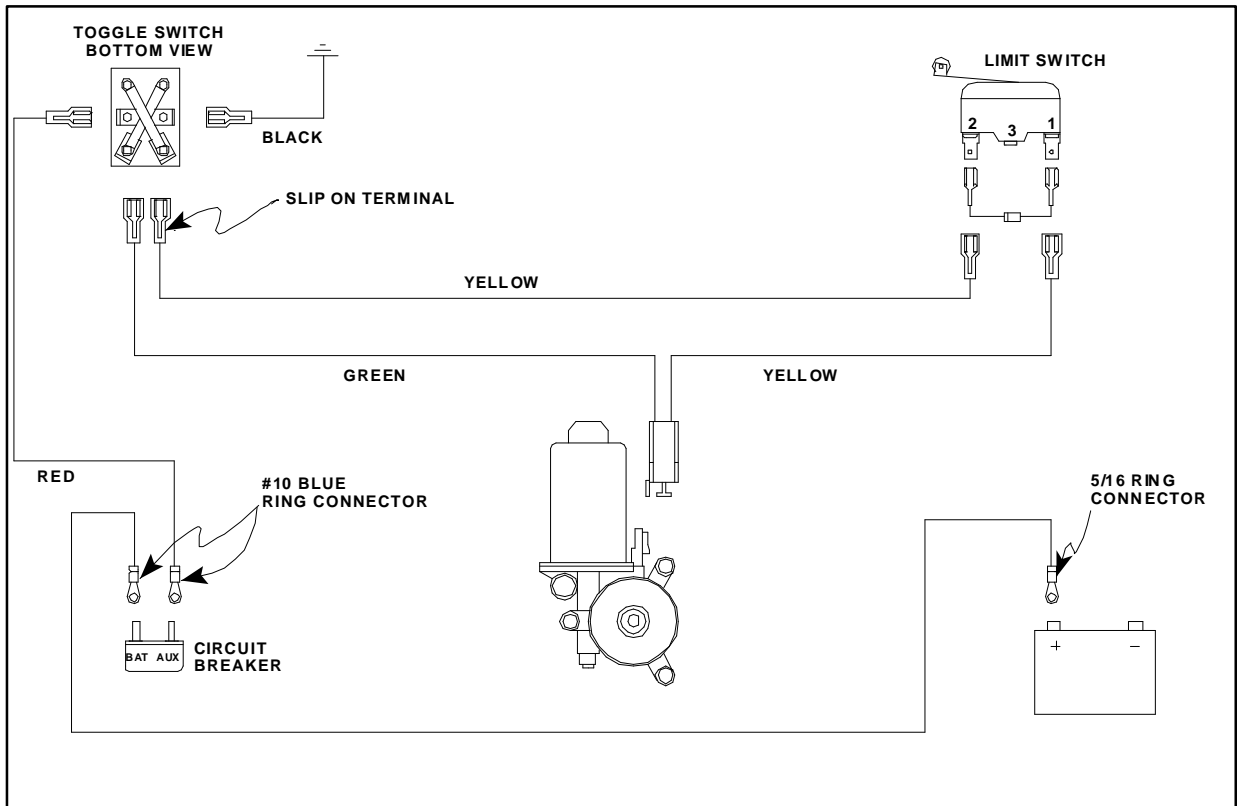


FIGURE 2-7: ELECTRICAL WIRING DIAGRAM

1. Crimp blue slip-on terminals to one end of the RED, BLACK, YELLOW, and GREEN wires.
2. Attach the slip-on terminals to the rear of the toggle switch as shown.
3. Permanently mount the toggle switch in its mounting hole.
4. Attach the other end of the BLACK wire to a good chassis ground.
5. Route the YELLOW wire from the toggle switch to the limit switch. Cut the wire to leave about 2" slack (save the excess wire) and crimp a blue ring-terminal to the end. Connect the terminal to the #2 terminal on the limit switch.
6. Cut a small section of the YELLOW excess wire and crimp slip-terminals to each end. Attach the terminals to the limit switch #1 and #2 terminals as shown.
7. Crimp a blue ring-terminal to one end of the excess YELLOW wire and attach the terminal to the #1 terminal on the limit switch.
8. Route the YELLOW wire from the limit switch to the motor. Cut the wire to leave about 2" slack and crimp a blue slip-on terminal to the wire. Connect the terminal to the motor terminal.
9. Route the GREEN wire from the toggle switch to the motor. Cut the wire to leave about 2" slack and crimp a blue slip-on terminal to the wire. Connect the terminal to the unused motor terminal.
10. Route the RED wire from the toggle switch through an existing hole in the firewall, and into the engine compartment. If possible, route the wire through an existing grommet. If not possible, drill a 3/8" diameter hole and use the snap-in grommet (provided).
11. At engine compartment, mount the supplied circuit breaker within 10 - 12 inches (25 - 30 cm) of battery.
12. Run the RED wire to the circuit breaker. Cut the wire to leave about 2" slack and crimp a blue ring terminal. Save the excess wire. Connect the ring terminal to the circuit breaker "AUX" terminal.
13. Crimp a blue ring terminal to the excess red wire. Connect the ring terminal to the "BAT" terminal on the circuit breaker.
14. Route the RED wire to the positive terminal of the vehicle battery. Cut the wire to leave about 2" slack, and crimp a large blue ring terminal to it. Connect the ring terminal to the positive terminal of the battery.
15. Use the cable ties provided to secure all installed wires.

F. INSTALLATION VERIFICATION

- Clear the vehicle floor of all loose material, high-plush carpet strands, etc. which may interfere with the operation of the power parking brake.
- Make sure that all fasteners are tightened properly.
- Run the Power Parking Brake through several cycles.

G. CUSTOMER ORIENTATION

IMPORTANT

- Customer Orientation -

Ricon Sales/Service Personnel must review the Warranty and Operator Manual with the customer to be certain he/she understands the safe operation of the product. Instruct the customer to always follow the operating instructions without exception.