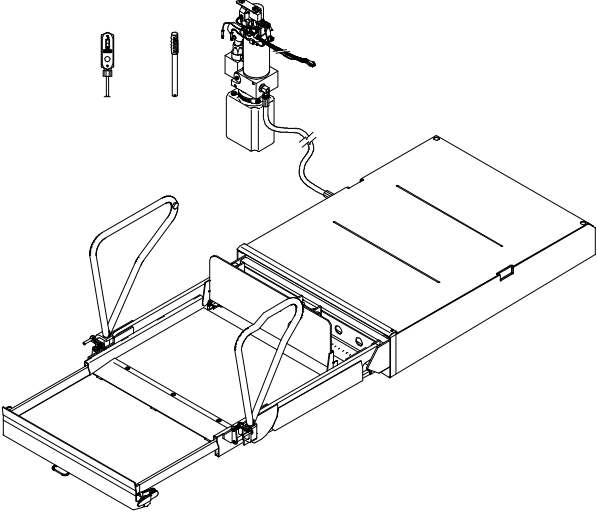


V. PARTS DIAGRAMS AND LISTS

This chapter contains parts diagrams and lists for the RICON Eclipse® F8000 (A) Series Export Use Wheelchair and Standee Lift. The parts diagrams are the 3D exploded view of the lift components with the individual components referenced by numbers. The accompanying parts list contains the part reference number, description, quantity used, and the Ricon stock number. For the part numbers of the lift decals, refer to Decal Locations and Part Numbers figure in Chapter II of this manual.



LIFT MODEL AND KIT NUMBERS	
PRODUCT NUMBER	F8000-E200A and F8000-E210A
DOCUMENTATION KIT NUMBER	01311
PRODUCTION DECAL SET NUMBER	01313
SPARE DECAL KIT NUMBER	26005

PARTS DIAGRAM	PAGE
FIGURE [5-1]: MONARCH HYDRAULIC POWER UNIT	5-2
FIGURE [5-2]: PUMP INTERIOR (STANDARD ENCLOSURE) MOUNTING ASSEMBLY	5-4
FIGURE [5-3]: OPTIONAL PUMP ENCLOSURE ASSEMBLY	5-6
FIGURE [5-4]: LIFT ENCLOSURE ASSEMBLY	5-10
FIGURE [5-5]: PLATFORM ASSEMBLY	5-14
FIGURE [5-6]: TRAVELING FRAME ASSEMBLY	5-18
FIGURE [5-7]: CARRIAGE ASSEMBLY	5-20

F8000 SERIES MONARCH HYDRAULIC POWER UNIT
 SERIES: F8000
 SERIAL NO's. 3700-PRESENT

DATE: 08/08/96
DWG. F8AX0001
REV. NO. 000

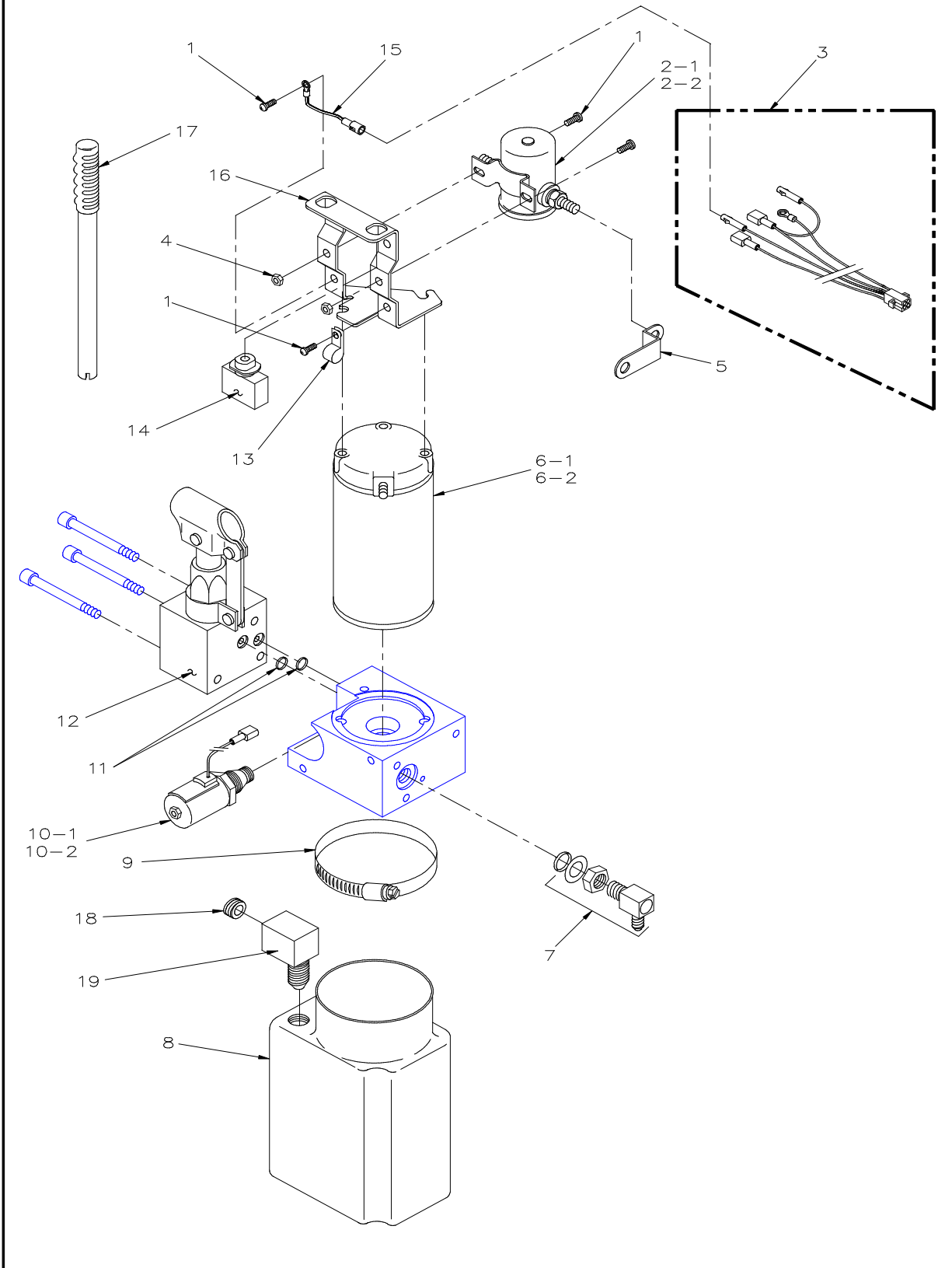


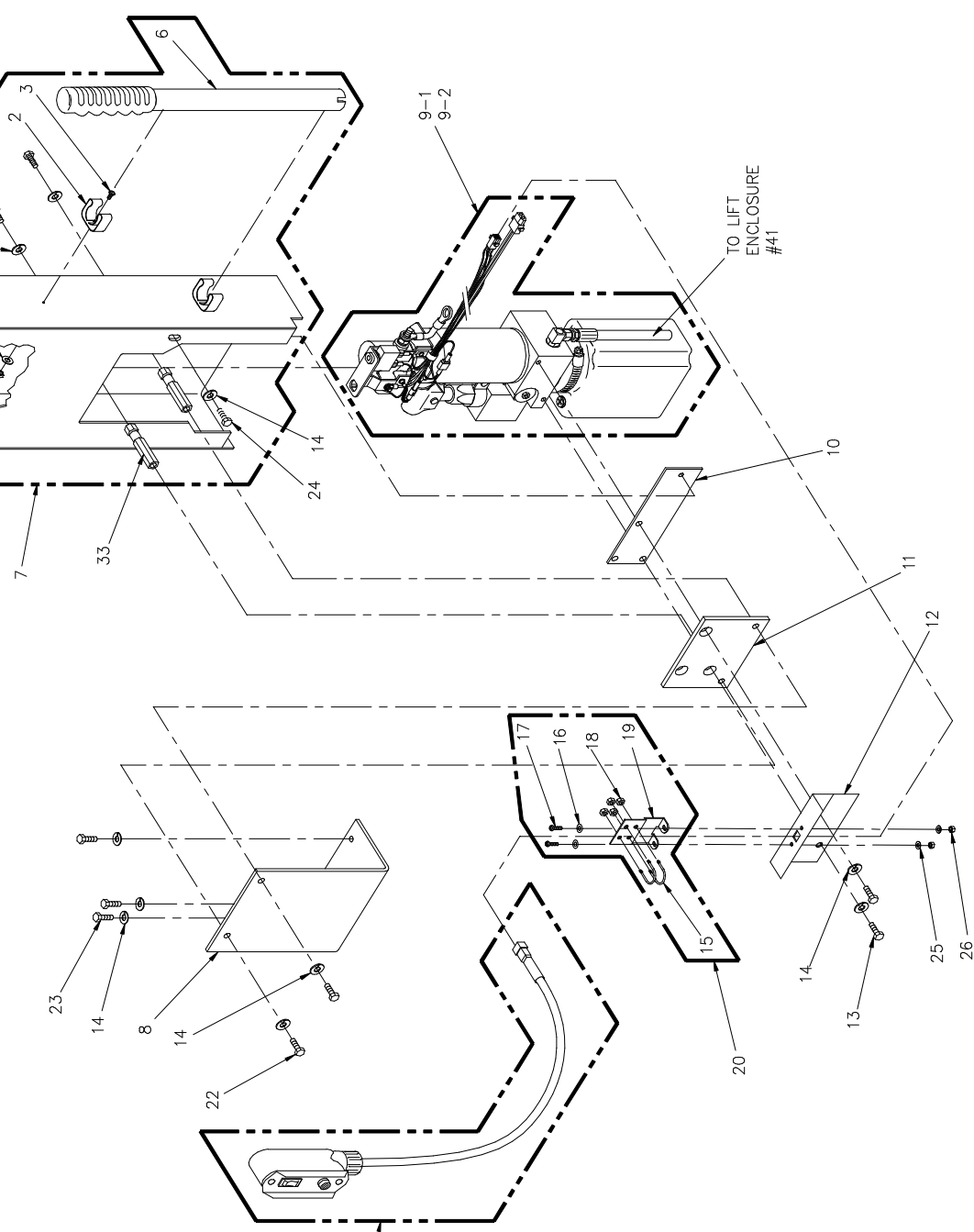
FIGURE [5-1]: MONARCH HYDRAULIC POWER UNIT

**MONARCH HYDRAULIC POWER UNIT
F8000 SERIES (ALL MODELS) WHEELCHAIR LIFT
SERIAL NO's. 3700 and HIGHER**

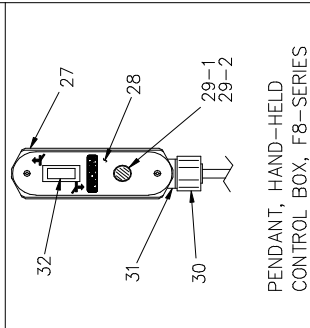
REF.	DESCRIPTION	QTY.	PART NO.
1	TRS-10-24 X 0.50 PAN PHIL, SELF THREAD	4	28111T
2-1	SOLENOID, SPST, 12V	1	26444
2-2	SOLENOID, SPST, 24V	1	26449
3	HARNESS, PUMP, COMMON TO S-SERIES/UV, 12V & 24V	1	V2-ES-100
4	NUT-10-24, HEX	2	28304
5	MOTOR, SOLENOID BUS BAR (SP SOLENOID)	1	V2-ES-030
6-1	MOTOR-ASSY. 12V, 3", MONARCH PUMP	1	V2-SH-115
6-2	MOTOR-ASSY. 24V, 3", MONARCH PUMP	1	V2-SH-116
7	ADAPTER-L 7/16M 9/16M ORB/JIC 1.03 X 1.06	1	V2-SH-14
8	RESERVOIR-RICON POWER UNIT, PLASTIC	1	V2-SH-108
9	CLAMP-HOSE, 3.5 DIA.	1	V2-SH-109
10-1	HYDRAULIC-ASSY. POPPET VALVE, 12V DELTROL	1	V2-SH-105
10-2	HYDRAULIC-ASSY. POPPET VALVE, 24V DELTROL	1	V2-SH-136
11	O-RING, NITRILE, 0.301ID, 0.070 WIDTH	2	24011
12	BACK-UP PUMP- MANUAL WITH OUT HANDLE	1	V2-SH-110
13	CABLE CLAMP, 3/8"	1	25516
14	CIRCUIT BREAKER-8AMP (RED)	1	265108
15	ELW05900/26493/26533/26354	1	ELJ01060
16	BRACKET-SOLENOID MOUNTING	1	V2-SH-127
17	HANDLE-MANUAL BACK UP PUMP	1	V2-SH-111
18	PLUG-RESERVOIR, BREATHER FILLER	1	V2-SH-106
19	FITTING-STREET ELBOW, FEMALE LARGE	1	V2-SH-013

DATE 08/08/96
 DWG. F8AX0008
 REV NO. 000

PUMP INTERIOR MOUNTING ASSEMBLY
 F8000 SERIES (ALL MODELS) WHEELCHAIR LIFT
 SERIAL NO's. 3700 and HIGHER



21-1 & 21-2
 22-3 & 22-4



PENDANT, HAND-HELD
 CONTROL BOX, F8-SERIES

FIGURE [5-2]: PUMP INTERIOR (STANDARD ENCLOSURE) MOUNTING ASSEMBLY

**PUMP INTERIOR MOUNTING ASSEMBLY
F8000 SERIES (ALL MODELS) WHEELCHAIR LIFT
SERIAL NO's. 3700 and HIGHER**

REF.	DESCRIPTION	QTY.	PART NO
1	COVER-S-SERIES PUMP	1	V2-CV-020
2	CLIP-EMERGENCY TOOLS, LARGE	2	25543
3	MS-10-24 X 0.50 PANPHIL	2	28111
4	WASHER-#10 FLAT	2	28271
5	NUT-10-24 JAM	2	28304
6	HANDLE-MANUAL BACK UP PUMP	1	V2-SH-111
7	KIT-PUMP COVER	1	F8-A250
8	BRACKET-PUMP MOUNTING, VERTICAL	1	F8-P301
9-1	HYDRAULIC-ASSY. POWER UNIT, 12V ECLIPSE	1	PMP12110309
9-2	HYDRAULIC-ASSY. POWER UNIT, 24V ECLIPSE	1	PMP24110309
10	PLATE-PUMP COVER MOUNT	1	V2-AC-71
11	PLATE-PUMP MOUNT	1	V2-AC-70
12	BRACKET-STRAIN RELIEF PENDANT	1	F8-0254
13	CS-5/16-18 X 1.25 HEX GR5	2	282231
14	WASHER-5/16 SPLIT LOCK	10	28278
15	U-BOLT-10-24 X 0.50ID X 0.75L	2	28427
16	WASHER-#8 SPLIT LOCK	2	28253
17	MS-8-32 X 0.375 PAN PHIL	2	28069
18	NUT-10-24 NYLON	4	28305
19	BRACKET-U-BOLT, PENDANT STRAIN RELIEF	1	V2-ES-014
20	KIT-CONTROL HARNESS STRAIN RELIEF	1	01007
21-1	PENDANT-ASSY. SINGLE SWITCH, 12V	1	F8-0432
21-2	PENDANT-ASSY. SINGLE SWITCH, 24V	1	F8-0319
21-3	PENDANT-ASSY. SINGLE SWITCH, COIL CORD, 12V	1	F8-0433
21-4	PENDANT-ASSY. SINGLE SWITCH, COIL CORD, 24V	1	F8-0320
22	CS-5/16-18 X 0.625 HEX GR5.	2	282239
23	CS-5/16-18 X 1.75 HEX SST.	3	282176
24	CS-5/16-18 X 0.50 HEX GR5.	3	282157
25	WASHER-#8 FLAT	2	2826926
26	NUT-8-32 NYLON	2	28303
27	PLATE-PENDANT SWITCH, GUARD	1	UV-ES-102
28	PLATE-PENDANT FUNCTION, FACE ECLIPSE	1	26272
29-1	LIGHT-LIFT ARMED INDICATOR, 12V	1	UL-ES-034
29-2	LIGHT-LIFT ARMED INDICATOR, 24V	1	V2-ES-016
30	CONNECTOR-PVC BOX	1	V2-ES-88
31	PVC BOX-WITH MALE CLIP.	1	V2-ES-85
32	SWITCH-SP.ROCKER (ON) OFF (ON), BLACK	1	26455
33	HEX, ROD-PUMP STANDOFF	2	V2-CV-015

DATE: 11/06/97
DWG. F8AX0007
REV. B

PUMP ENCLOSURE ASSEMBLY
 F800 SERIES (ALL MODELS) WHEELCHAIR LIFT
 SERIAL NO's. 3700 and HIGHER

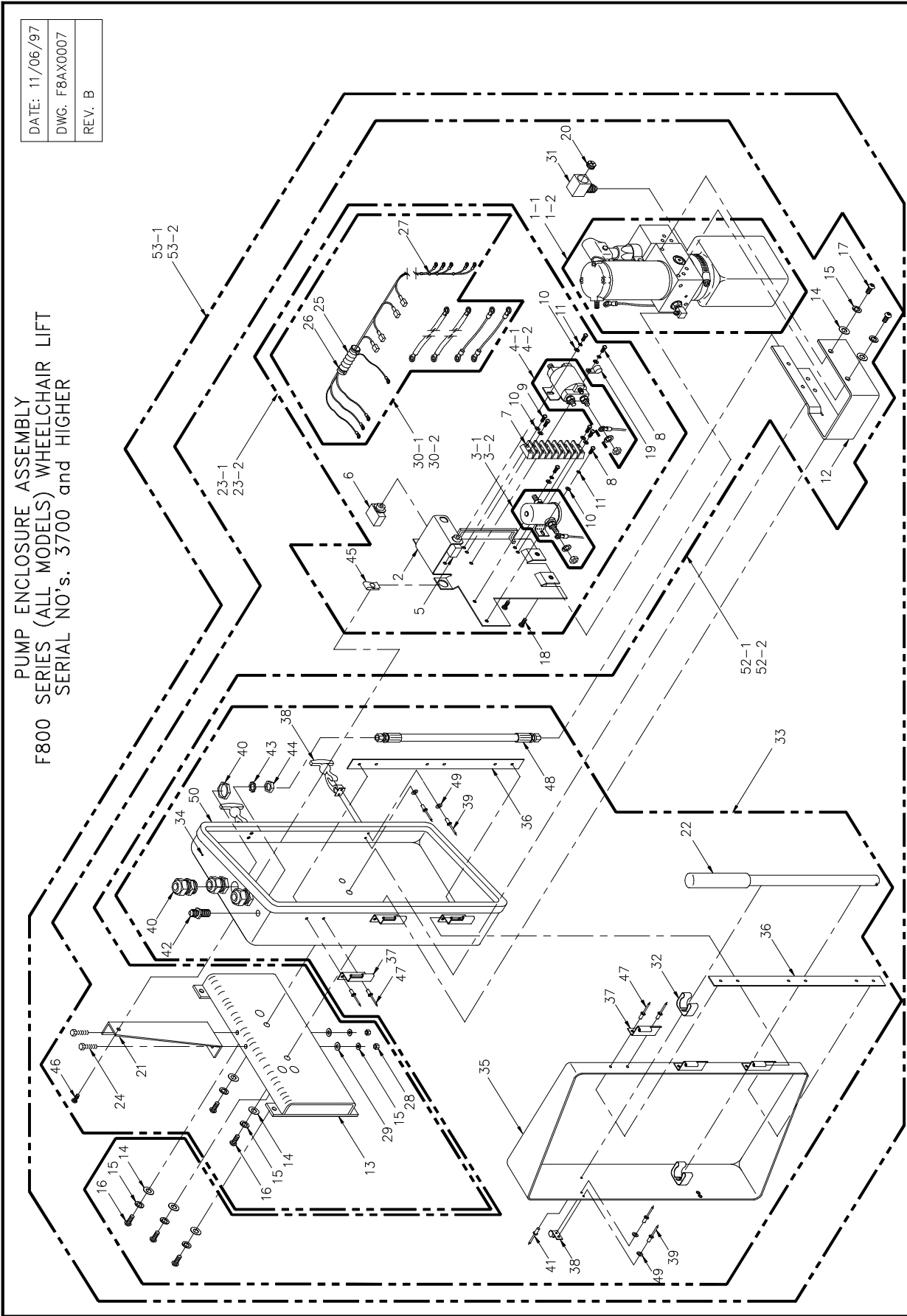


FIGURE [5-3]: OPTIONAL PUMP ENCLOSURE ASSEMBLY

PUMP ASSEMBLY
F8000 (A) SERIES (ALL MODELS) WHEELCHAIR LIFTS
SERIAL NO's. 3700 and HIGHER

REF.	DESCRIPTION	QTY.	PART NO.
1-1	PUMP, NO TOP, UV RES W/HORIZ, 2K PSI	1	PMP212003007
1-2	PUMP, NO TOP, UV RES W/HORIZ, 2K PSI	1	PMP224003007
2	PLATE-WASSY. SOLENOID	1	F9-0205
3-1	SOLENOID-SPST,12V	1	26444
3-2	SOLENOID, SP 24V ISOLATED GROUND	1	264492
4-1	SOLENOID-12V, DP LARGE	1	26447
4-2	SOLENOID-24V, DP LARGE ISOLATED GROUND	1	26450
5	CIRCUIT BREAKER-5AMP	1	26511
6	CIRCUIT BREAKER-30AMP	1	26510
7	TERMINAL STRIP, 10-18 GA, ALTECH	1	26566
8	MS-10-32 X 0.313 PAN PHIL SST.	4	28703
9	MS-10-32 X 0.75 PAN PHIL	4	28147
10	WASHER-#10 FLAT SST.	8	282715
11	WASHER-#10 SPLIT LOCK SST.	4	282725
12	BRACKET-PUMP MOUNTING	1	F9-0204
13	BRACKET-WASSY., PUMP MOUNTING	1	UV-PF-945
14	WASHER-0.32ID X 0.75OD X 0.08 SST.	7	282776
15	WASHER-5/16 SPLIT LOCK	11	282785
16	SCS-5/16-24 X 0.75 BTN. SKT. SST.	5	28702
17	SCS-5/16-18 X 0.75 BTN. SKT. SST.	2	282285
18	SCS-10-32 X 0.50 BTN. SKT. SST.	2	28156
19	CLAMP, CABLE-3/8"	1	25516
20	PLUG-RESERVOIR, BREATHER FILLER	1	V2-SH-106
21	BRACKET-STIFFENER	1	F9-0378
22	HANDLE-MANUAL BACKUP PUMP	1	VS-SH-111
23-1	SOLENOID PLATE-ASSY. 12VDC	1	F9-0243
23-2	SOLENOID PLATE-ASSY. 24VDC	1	F9-0246
24	CS-5/16-18 X 0.75 HEX SST.	2	282205
25	CONDUIT-1/2" PLASTIC	0.17	27200
26	CABLE TIE-5.5" (NAT)	2	25520
27	CABLE TIE-4.0" (NAT)	9	25519
28	NUT-5/16-18 NYLON SST.	2	283145
29	NUT-5/16-18 FLAT SST.	2	28630
30-1	HARNESS-ASSY., PUMP SOLENOID PLATE, 12V	1	F9-0358
30-2	HARNESS-ASSY., PUMP SOLENOID PLATE, 24V	1	F9-0370
31	FITTING-STREET ELBOW, FEMALE	1	V2-SH-013
32	CLIP-EMERGENCY TOOLS	2	25543
33	PUMP ENCLOSURE-ASSY.	1	F9-0371
34	BASE-PUMP ENCLOSURE	1	F9-0216
35	DOOR-PUMP ENCLOSURE	1	F9-0217
36	PLATE REINFORCEMENT-PUMP ENCLOSURE	2	F9-0255
37	HINGE-2.50 X 2.00 SST.	6	F9-0218
38	LATCH,DRAW-FLEXABLE T-HANDLE	2	25089
39	RIVET-1/8 X 3/8 BLIND AL.	8	14-30-302
40	STRAIN RELIEF-STRAIGHT THRU., LIQ. TIGHT	3	26284
41	RIVET-5/32 X 0.19-0.25 BLIND (ASD5-4)	2	28645
42	ADAPTER-STR. 7/16M 7/16M JIC/JIC BHD 2.08L	1	V2-SH-981
43	WASHER-7/16 EXTERNAL STAR SST.	1	282915
44	NUT-7/16-20 HEX PLATED JAM	1	14-10-107
45	SPRING NUT-1/4-20 SST.	1	283105

REF.	DESCRIPTION	QTY.	PART NO.
46	SCS-1/4-20 X 0.75 BTN. SKT. SST.	1	28198
47	RIVET-3/16 X 0.45 BLIND AL.	12	28704
48	HOSE-ASSY., 11" X 1/4 JIC X 1/4 JIC	1	F9-0333
49	WASHER-#8 FLAT	8	28269
50	SEAL,DOOR-7/16 X 53/64	5.33	26679
51	WASHER-1/4 FLAT SST.	1	282735
52-1	PUMP W/ BRACKETS, 12V	1	F9-0237
52-2	PUMP W/ BRACKETS, 24V	1	F9-0238
53-1	PUMP W/ ENCLOSURE, 12V	1	F9-0235
53-2	PUMP W/ ENCLOSURE, 24V	1	F9-0236

NOTES

DATE: 08/23/95
DWG. F8AX0003
REV NO. 009

LIFT ENCLOSURE ASSEMBLY
 F8000 SERIES (ALL MODELS) WHEELCHAIR LIFT
 SERIAL NO's. 3700 and HIGHER

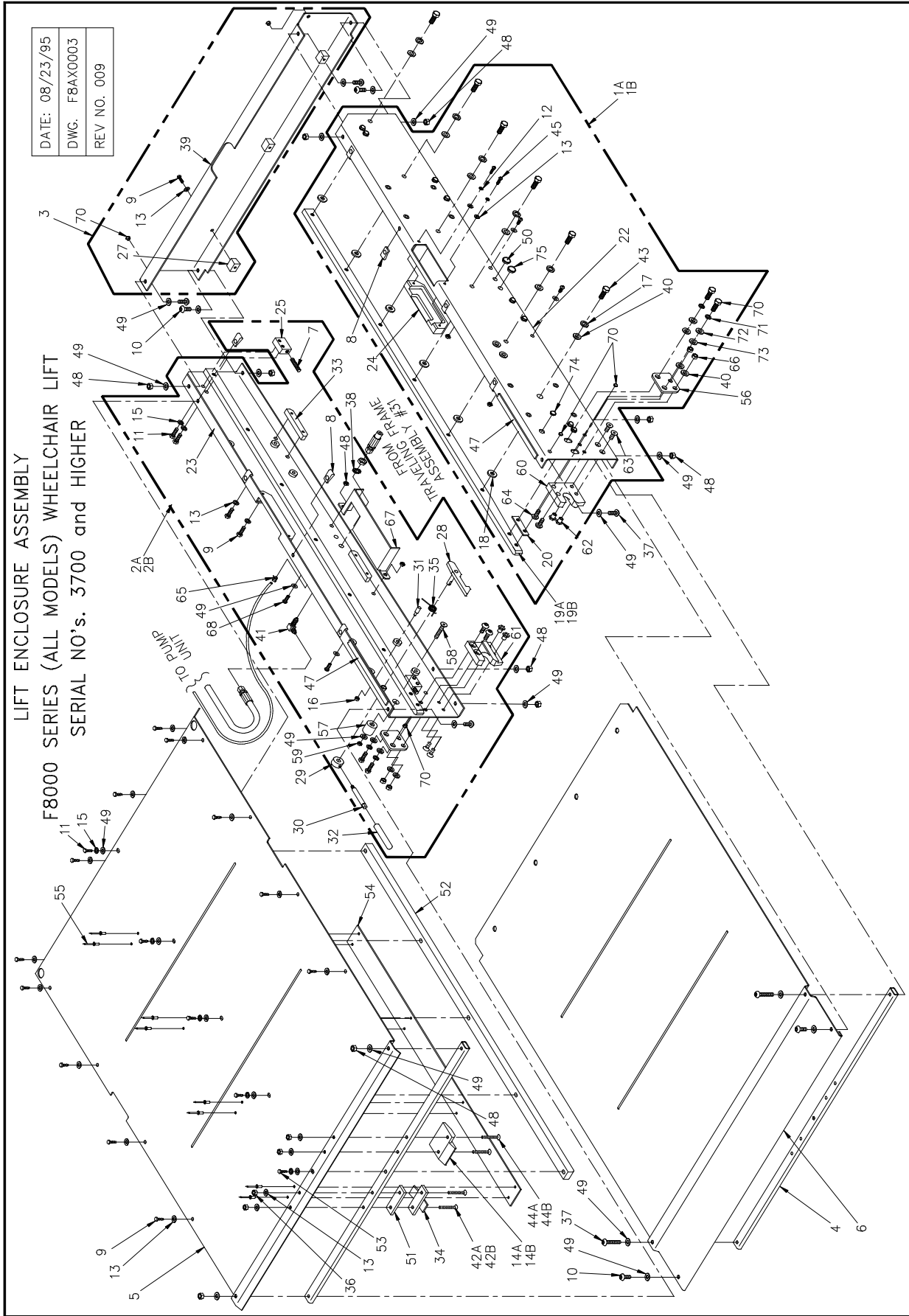


FIGURE [5-4]: LIFT ENCLOSURE ASSEMBLY

**LIFT ENCLOSURE ASSEMBLY
F8000 SERIES (ALL MODELS) WHEELCHAIR LIFT
SERIAL NO's. 3700 and HIGHER**

REF.	DESCRIPTION	QTY.	PART NO.
1A	CHANNEL-ASSY, MTG FRM, RH SL	1	F8-0372
1B	CHANNEL-ASSY, MTG FRM, RH ST	1	F8-0349
2A	CHANNEL-ASSY, MTG FRM, LH SL	1	F8-0373
2B	CHANNEL-ASSY, MTG FRM, LH ST	1	F8-0371
3	CHANNEL, MOUNTING FRAME, REAR, MECH. ASSY.	1	F8-0065
4	TUBE, COVER SUPPORT	2	F8-0101
5	COVER, TOP	1	F8-0374
6	COVER, BOTTOM	1	F8-0071
7	SCREW, SET, 3/8-16 X 1.25 CUP POINT NYLOCK	4	282461
8	NUT-SPRING, 1/4-20	8	283105
9	BOLT-HEX 1/4-20X5/8 GR5	23	28164
10	SOC BUTTON 5/16-18 X 0.75	6	282285
11	BOLT-HEX 5/16-18X3/4	12	28224
12	WASHER #10 SPLIT LOCK	4	282725
13	WASHER 1/4 FLAT SAE	27	28273
14A	BLOCK, BRIDGEPLATE GUIDE-ANGLED CARR.	1	F8-0388
14B	BLOCK, BRIDGEPLATE GUIDE	1	F8-0383
15	WASHER 5/16 SPLIT LOCK	8	28278
16	NUT-HEX 10-24 NYLON INSERT	1	28305
17	WASHER, 3/8 SPLIT LOCK	12	28280
18	BUSHING, SPACER, GUIDERAIL	12	F8-0006
19A	GUIDE RAIL, SLOPING	2	F8-0378
19B	GUIDE RAIL, 47.00 X 1.00 X 0.50	2	F8-0007
20	PLATE, SPACER, GUIDERAIL	2	F8-0344
22	CHANNEL-WELD ASSY, MTG FRM, RH	1	F8-0347
23	CHANNEL-WELD ASSY, MTG FRM, LH	1	F8-0348
24	RELIEF, MOUNTING FRAME	2	F8-0275
25	BLOCK, CARRIAGE STOP	4	F8-0082
27	BLOCK, RETAINING, BOTTOM COVER	3	F8-0161
28	HOOK, STOW LOCK, WELD ASSEMBLY	1	F8-0273
29	COLLAR-STOW LOCK HD	1	F8-0339
30	HANDLE-STOW LOCK HD	1	F8-0340
31	STOP PEG, STOW LOCK	1	F8-0173
32	CAP, VINYL YLW .375-2.5 IL HVY BLK LETTER	1	01653
33	BOTTOM COVER RETAINER	4	UV-MF-046
34	STRIKER, DEPLOY LOCK, WELD ASSY.	1	F8-0298
35	SPRING, STOW LOCK, 8.3	1	F8-0270
36	NUT-HEX 1/4-20 NYLON INSERT	4	28309
37	SOC BUTTON 5/16-18 X 1.25	4	282256
38	WASHER, 7/16 EXTERNAL STAR - SST	1	282915
39	CHANNEL, REAR, ASSEMBLY	1	F8-0251
40	WASHER 3/8 FLAT SAE	16	282835
41	FITTING, "L" 1/4 JIC BULK HEAD W/HEX NUT	1	V2-SH-98
42-1	MS 1/4-20 X 1-1/4 PHIL FLAT	2	28189
42-2 *	MS-SOC FLAT, 1/4-20 X 1.50	2	281846
43	BOLT-HEX 3/8-16 X 7/8 GR5	12	282345

* Hardware used for sloping track.

** For straight track only.

REF.	DESCRIPTION	QTY.	PART NO.
44-1	MS-SOC FLAT, 1/4-20 X 1.50	2	281846
44-2 *	MS 1/4-20 X 1 3/4 SLOT FLAT	2	28195
45	MS 10-24 X 3/4 PHIL PAN	4	28113
46	WASHER #10 FLAT SAE	4	28271
47	FOAM, RUBBER, BLK., 1/8 X 1/2 X 100FT, ADH	88"	06-06-107
48	NUT-HEX 5/16-18 NYLON INSERT	12	28314
49	WASHER 5/16 FLAT SAE	25	28277
50	PLUG - 0.625 DIA, 0.125 MTL. BLK PL.	2	26683
51 *	BAR, STRIKER, DEPLOY LOCK	1	F8-0184
52	RAIL, ALIGNMENT	1	F8-0127
53	CS-5/16-18-X 1.25 HEX GR5	1	282231
54	PLATE-DEPLOY LOCK GUIDE	1	F8-0373
55	RIVET, BLIND-3/16 X 0.19-0.25	8	28647
56	PLATE-SHEAR **	2	F8-0377
57	STOP-STOW LOCK	1	F8-0341
58	SCS 5/16-18 X 1.50 FLAT SKT	1	282261
59	NUT-5/16-18 JAM NYLON SST	1	283146
60	BLOCK-ANTI RATTLE RH	1	F8-0343
61	BLOCK-ANTI RATTLE LH	1	F8-0342
62	NUT, S.S. TEE, 5/16 OD X 1/4 L NECK	4	V2-PF-98
63	SCS-1/4-20 X .625 FLAT SKT	4	28648
64	SCS-3/8-16 X 1.00 BTN SKT	4	28163
65	STRAIN REF 90E	1	26684
66	NUT-3/8-16 NYLON	4	28318
67	BRACKET-HARNESS GUARD	1	F8-0436
68	SCS-5/16-18 X 0.75 BTN SKT SST	4	282285
69	PLUG, 0.31i , 0.3 TO 0.14 MTL, BLK PL	5	25565
70	MS-7/16-20 x 1" HEX ZINC	4	28933
71	WASHER 7/16 LOCK PL	4	14-16-007
72	WASHER 7/16 FLAT	4	28291
73 *	WASHER 7/16 FLAT	4	28291
74	PLUG-0.50 DIA.. UP TO 0.13 MTL, BLK PLASTIC	1	V2-AC-91
75	PLUG, 0.43-0.45 DIA., UP TO 0.06 THK., BLK	1	26287

* Hardware used for sloping track.

** For straight track only.

NOTES

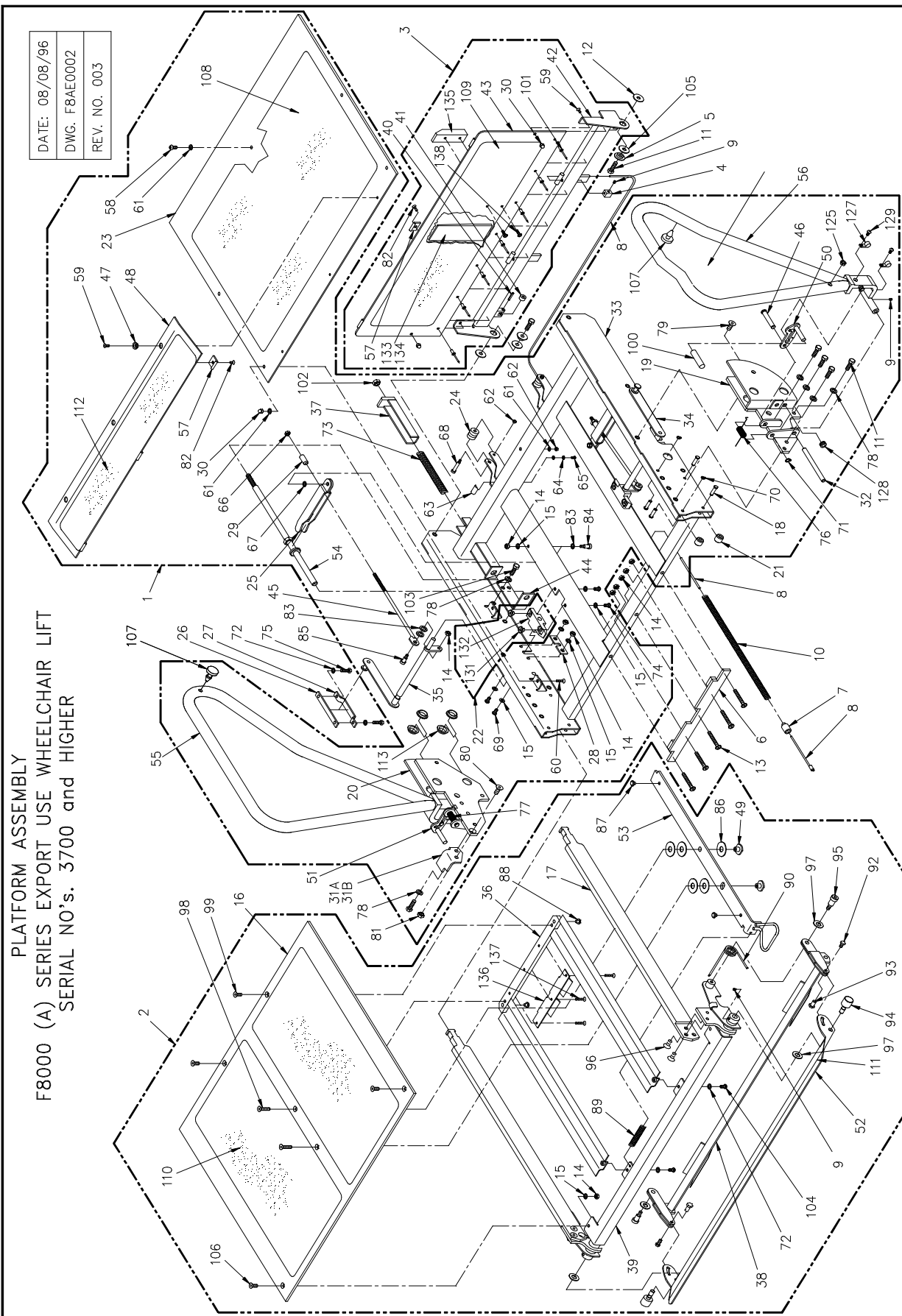


FIGURE [5-5]: PLATFORM ASSEMBLY

**PLATFORM ASSEMBLY
F8000 (A) SERIES EXPORT USE WHEELCHAIR LIFT
SERIAL NO's. 3700 and HIGHER**

REF.	DESCRIPTION	QTY.	PART NO.
1	FIXED PLATFORM, ASSY.	1	F8-0427
2	SLIDING PLATFORM, ASSY.	1	F8-0428
3	BRIDGEPLATE, ASSY.	1	F8-0421
4	BLOCK, CABLE CLAMP, B-PLATE RETURN	2	F8-0139
5	BUSHING, STIRRUP PIVOT	2	UV-PF-039
6	PLATFORM STOP, WASSY.	1	F8-0440
7	BOBBIN, SPRING GUIDE	2	F8-0243
8	CABLE, BRIDGE PLATE RETURN	2	F8-0255
9	SS-1/4-20 X 0.25 SKT. CUP POINT	4	28200
10	SPRING, COMPR. 0.50 OD X 14" X 0.054 DIA.	2	254615
11	CS-5/16-18 X 1.00 HEX GR5	10	28216
12	WASHER-0.31ID X 1.25OD X .05 FENDER SST.	2	283715
13	SCS-1/4-20 X 2.00 BTN. SKT.	5	28161
14	NUT-HEX 1/4-20 PLATED THIN NYLON	15	14-08-304
15	WASHER-1/4 FLAT	4	28273
16	PLATE, SLIDING PLATFORM SURFACE	1	F8-0022
17	GUIDERAIL, SLIDING PLATFORM	2	F8-0296
18	PIN, ROLLER PIVOT	8	F8-0055
19	BRACKET, MTG., PLATFORM, WASSY., R. HAND	1	F8-0060
20	BRACKET, MTG., PLATFORM, WASSY., L. HAND	1	F8-0061
21	ROLLER, SLIDING PLATFORM	8	F8-0062
22	BLOCK-ASSY. B-PLATE ACTUATOR PIVOT	2	F8-0064
23	PLATE, FIXED PLATFORM SURFACE	1	F8-0094
24	PULLEY, BRIDGEPLATE	2	F8-0081
25	LEVER, BRIDGEPLATE ACTUATOR, WASSY.	2	F8-0086
26	PLATE, PIN GUIDE, UPPER	2	F8-0087
27	PLATE, PIN GUIDE, LOWER	2	F8-0088
28	PLATE, MOUNTING, LINK PIVOT	2	F8-0090
29	COLLAR, SPACER BRIDGEPLATE ADJUSTER	2	F8-0091
30	NUT-10-24 HEX ACORN	6	28296
31A	STRIKER PLATE, STOW LOCK (SN 2188 TO 2299)	1	F8-0098
31B	STRIKER PLATE, STOW LOCK	1	F8-0272
32	SHAFT, HANDRAIL PIVOT	2	F8-0115
33	PLATFORM, FIXED-WASSY.	1	F8-0151
34	ACTUATOR CRANK, R.H., B-PLATE, WASSY.	1	F8-0156
35	ACTUATOR CRANK, L.H., B-PLATE, WASSY.	1	F8-0157
36	DECK SUPPORT, SLIDING PLATFORM, WASSY.	1	F8-0160
37	PUSHROD, B-PLATE ACTUATOR, WASSY.	2	F8-0166
38	ACTUATOR, ROLLSTOP, WASSY.	1	F8-0188
39	SLIDING PLATFORM, WASSY.	1	F8-0414
40	SPRING-PIN 3/16 X 3/4	2	14-33-262
41	ROLLER, BRIDGEPLATE, OD 0.534	2	F8-0203
42	FRAME, BRIDGEPLATE, WASSY.	1	F8-0209
43	PLATE, BRIDGEPLATE	1	F8-0417
44	BRACKET, PULLROD GUIDE	2	F8-0212
45	PULLROD, B-PLATE ACTUATOR, WASSY.	2	F8-0213
46	PIN, LATCH PIVOT	2	F8-0217
47	BUSHING, MOUNTING, SLIDING PLATFORM	3	F8-0218
48	PLATE, PLATFORM RAMP	1	F8-0219
49	PIVOT BUSHING, PLATFORM LOCK	2	F8-0220

REF.	DESCRIPTION	QTY.	PART NO.
50	LATCH, HANDRAIL, R.H. WASSY.	1	F8-0222
51	LATCH, HANDRAIL, L.H. WASSY.	1	F8-0223
52	ROLLSTOP, WASSY.	1	F8-0416
53	BAR, PLATFORM LOCK	1	F8-0227
54	SHAFT, BRIDGEPLATE PUSHROD, WASSY.	2	F8-0233
55	HANDRAIL, LEFT HAND, WASSY.	1	F8-0237
56	HANDRAIL, RIGHT HAND, WASSY.	1	F8-0238
57	SKID, BRIDGE PLATE	6	UL-BA-021
58	SCS-10-24 X 0.75 BTN. SKT. SST.	1	28143
59	SCS-10-24 X 0.50 FLAT SKT. SST.	5	28137
60	MS-10-24 X 5/8 FLAT PHIL	4	28122
61	WASHER-#10 FLAT SST.	6	282715
62	NUT-10-24 NYLON	3	28305
63	CABLE GUIDE	2	F8-0252
64	WASHER-#6 FLAT AN960-6	4	28267
70	RETAINING RING 1/4"	8	14-31-025
71	RETAINING RING 3/8"	2	14-31-037
72	WASHER-1/4 SPLIT LOCK	6	28274
73	SPRING, COMP. .70 OD X 10.38" X .095 SST	2	254616
74	SCS-1/4-20 X 0.50 BTN. SKT. SST	4	281965
75	CS-1/4-20 X 0.875 HEX GR5	4	28180
76	SPRING, HANDRAIL, R.H.	1	F8-0265
77	SPRING, HANDRAIL, L.H.	1	F8-0266
78	WASHER-5/16 SPLIT LOCK	12	28278
79	SCS-5/16-18 X 1.00 FLAT SKT. SST	2	282251
80	SCS-5/16-18 X 0.75 FLAT SKT.	1	28225
82	MS-10-24 X 1/4 PHIL FLAT UNDER CUT	6	28106
83	WASHER-5/16 FLAT	5	28277
84	SHS-5/16 X 0.375, 1/4-20 SKT.	2	28373
85	SHS-5/16 X 0.25, 1/4-20 SKT.	2	283731
86	WASHER, NYLON, .53 ID X 1.40 OD X 0.06	5	28251
87	GUIDE, DRIVE SHAFT PIVOT	2	UV-DS-014
88	BUTTON, GUIDE	2	UV-DS-017
89	SPRING, EXT., 0.50 X 3.50 X 0.054, SST	1	254531
90	SPRING, R.H., ROLLSTOP ACTUATOR RETURN	1	UV-SP-003
91	SPRING, L.H., ROLLSTOP ACTUATOR RETURN	1	UV-SP-002
92	CS-1/4-20 X 0.50 HEX GR5	2	28165
93	NUT, TEE-5/16 OD X 1/2 NECK SST.	2	V2-PF-99
94	PIN-ROLLSTOP PIVOT	2	F8-0392
95	SHS-3/8 X 0.375, 5/16-18 SKT. SST.	2	283735
96	SCS-5/16-18 X 0.50 FLAT SKT. SST	4	282252
97	WASHER, NYLON, .375 ID X .630 X .072	4	28565
98	SCS-1/4-20 X 0.625 FLAT SKT.	6	28163
100	VINYL CAP	2	01653
101	RIVET, BLIND AL 3/16 X 3/8 #AD66BS	7	14-30-309
102	NUT-3/8-16 NYLON	2	28318
103	CS-5/16-18 X 0.625 HEX GR5	4	282239
104	SCS-1/4-20 X 0.50 BTN. SKT. SST.	2	281965
105	WASHER-578ID X 1.067OD X 0.031 NYLON	2	28574
106	SCS-1/4-20 X 0.75 FLAT SKT. SST.	2	28184
107	BUMPER, RUBBER	2	V2-AC-86
108	SAFETY TREAD, 25.50 X 16.00, OCEAN GRAY	1	25663
109	SAFETY TREAD, 25.50 X 7.00, SAFETY YELLOW	1	25665
110	SAFETY TREAD, 21.75 X 11.13, OCEAN GRAY	2	25675
111	SAFETY TREAD, 25.50 X 3.00, SAFETY YELLOW	1	25664
112	SAFETY TREAD, 25.50 X 4.00, OCEAN GRAY	1	25662
113	BUSHING, 12FDU04, 3/4"ID X 1/4"	8	25386
114	PLUG, HANDRAIL, 0.75 DIA. ADHESIVE BACKED	4	F8-0335

REF.	DESCRIPTION	QTY.	PART NO.
125	BUSHING-1/2 SNAP IN	1	28-26-075
127	CLAMP-1/4 NYLON	2	28-02-350
128	GROMMET-0.38 X 0.56 X 0.19	1	26664
129	SCS-8-32 X 0.50 BTN. SKT.	2	28083
131	NUT,TEE-5 /16OD X 1/4 NECK	4	V2-PF-98
132	BLOCK-BRIDGEPLATE ACTUATOR PIVOT	2	F8-0415
133	BLOCK-BRIDGEPLATE GUIDE	1	F9-0290
134	TAPE-ADHESIVE, TRANSFER 10 MIL. X 1.00 WIDE	1	263110
135	BLOCK-B-PLATE GUIDE BUMPER	1	F8-0441
136	BRACKET-PLATFORM STOP	1	F8-0442
137	SCS-10-24 X 0.375 FLAT SKT.	3	28138

DATE: 08/08/96
DWG. F8EX0004
REV NO. 003

TRAVELING FRAME ASSEMBLY
 F8000 SERIES EXPORT USE WHEELCHAIR LIFT
 SERIAL NO's. 3700 and HIGHER

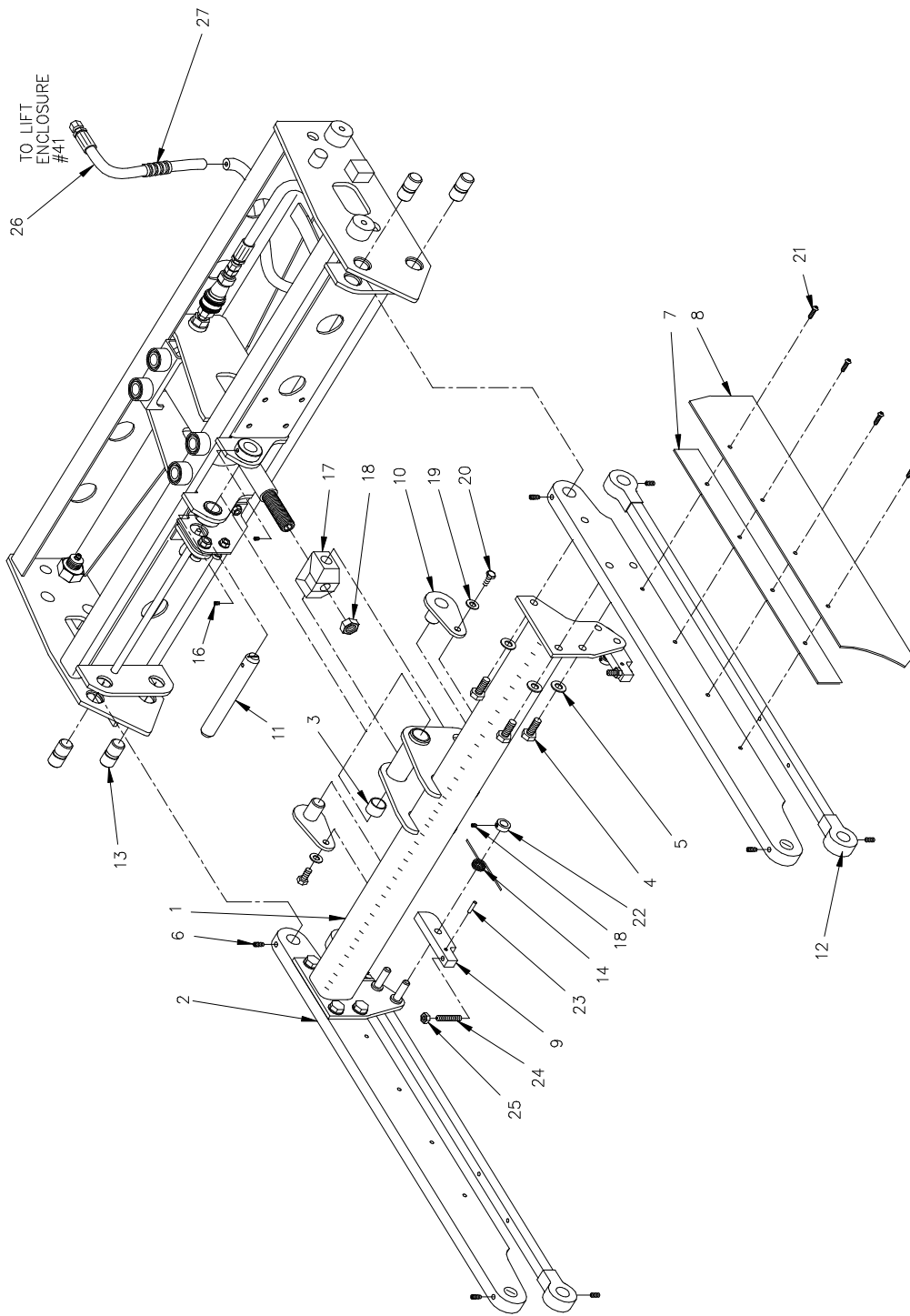


FIGURE [5-6]: TRAVELING FRAME ASSEMBLY

**TRAVELING FRAME ASSEMBLY
F8000 (A) SERIES EXPORT USE WHEELCHAIR LIFT
SERIAL NO's. 3700 and HIGHER**

REF.	DESCRIPTION	QTY.	PART NO.
1	LIFTING FRAME, WELD ASSEMBLY	1	F8-0051
2	ARM, UPPER	1	F8-0005
3	BEARING, DU, 0.75ID X 0.875OD X 0.63	6	UV-BU-006
4	CS-3/8-16 X 1.00 HEX GR5	6	28235
5	WASHER-3/8 FLAT	6	28283S
6	SS-5/16-18 X 0.50 SKT.	8	14-32-608
7	SHIM, LIFTING ARM COVER	2	F8-0107
8	COVER, LIFTING ARM	2	F8-0108
9	BAR, ROCKER STOP	2	F8-0067
10	KEEPER PLATE, WELD ASSEMBLY	2	F8-0043
11	PIN, 0.75 OD X 6.00	1	F8-0041
12	ARM-WASSY. ,PARALLEL, LOWER	2	F8-0430
13	PIN-PIVOT, LIFTING FRAME	8	F8-0042
14	SPRING-0.051 DIA., 180 DEG., 0.344 ID., LH.	1	254562
15	SPRING-0.051 DIA., 180 DEG., 0.344 ID., RH.	1	254561
16	SS-1/4-20 X 0.25 SKT. CUP POINT	4	28200
17	TRUNION,CYLINDER	1	F8-0044
18	NUT-3/4-16 HEX JAM	1	14-08-110
19	WASHER-5/16 FLAT	2	28277
20	CS-5/16-18 X 0.625 HEX GR5	2	282239
21	SCS-1/4-20 X 1.00 BTN. SKT. SST.	8	28198
22	COLLAR-0.38ID X 0.75OD	2	VS-BU-02
23	PIN,ROLL-5/32 X 0.75	2	28358
24	SS-5/16-18 X 1.50 SKT. CUP POINT	2	282249
25	NUT-5/16-18 HEXJAM	2	28315
26	HOSE-HYDRAULIC, SYNIFLEX 46"	1	F8-0253
27	CONDUIT-PLASTIC	35"	27201
28	ARM-UPPER, ADA	1	F8-0364
29	CABLE RETAINER	2	F8-0366
30	CABLE-18/2 POLYURETHANE	16'	27033
31	SHIM-LIFTING FRAME, ADA	1	F8-0364
32	SCS-8-32 X 0.375 FLAT SKT.	2	28068

DATE: 04/20/98
DWG. F8AE0005
REV. E

CARRIAGE ASSEMBLY
 F8000 (A) SERIES EXPORT WHEELCHAIR LIFT
 SERIAL NO's. 3700 and HIGHER

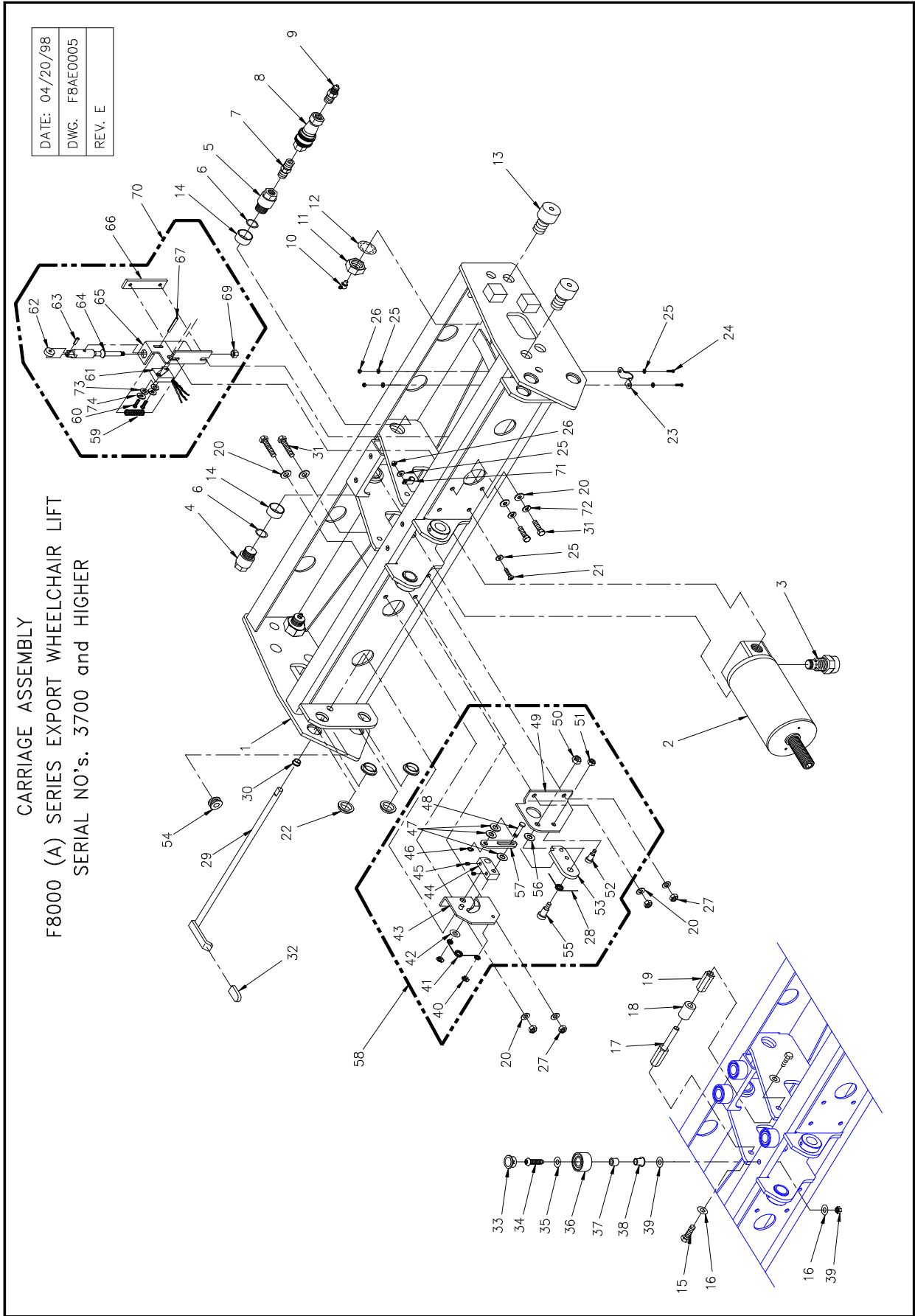


FIGURE [5-7]: CARRIAGE ASSEMBLY

CARRIAGE ASSEMBLY
F8000 (A) SERIES EXPORT USE WHEELCHAIR LIFT
SERIAL NO's. 3700 and HIGHER

REF.	DESCRIPTION	QTY.	PART NO.
1	CARRIAGE WLDT, COATED	1	F8-0400
2	CYLINDER, HYD.	1	F8-0012
3	FLOW CONTROL, 0.50 GPM	1	V2-SH-70
4	FITTING, PIVOT	1	F8-0009
5	FITTING, PIVOT, 1/4 NPT	1	F8-0008
6	O-RING, NITRILE, 0.644 ID X 0.087W	2	24908
7	FITTING, NIP, 1/4P, STL	1	V2-SH-29
8	FITTING, QUICK-DISCONNECT, 1/4"	1	UV-SH-003
9	FITTING, MCN, 1/4J, 1/4P, STL	1	V2-SH-84
10	FITTING, GREASE, 65 DEG PRESS-IN	4	21-02-011
11	NUT, JAM, 3/4-16	4	14-08-110
12	WASHER, ISL, 3/4	4	14-16-110
13	CAM FOLLOWER, 1-1/4 O.D. X 3/4 CRWND	4	40-20-006
14	BUSHING-16FDU08, 1"D X 1/2	2	25382
15	SCREW, HEX, 5/16-18 X 3/4	2	28224
16	WASHER, FLT, .32 X .59 X .06 SST	10	28630
17	SHAFT, ALIGNMENT SUPPORT	1	F8-0122
18	ROLLER-ALIGNMENT SUPPORT	1	F8-0124
19	SHAFT-LOCATOR-ALIGNMENT SUPPORT	1	F8-0123
20	WASHER, FLT, .281 X .625 X .065	8	28273
21	SCREW, SHC, 10-24 X 5/8 SST	1	28132
22	BEARING, DU FLNG 3/4 ID X 1/4L	8	25386
23	CLAMP, RETAINING (ZINC PLATED)	1	28407
24	SCREW, BHS, 10-24 X 3/4 SST	2	28143
25	WASHER, FLT, .219 X .50 X .049	4	28271
26	NUT, ESN, 10-24	2	28305
27	NUT, ESN, 1/4-20	4	28309
28	SPRING, 0.071, 90 DEG., 0.375 ID, LH.	1	254565
29	ROD WLDT, DEPLOY LOCK	1	F8-0177
30	BUSHING, FLANGE 0.375 ID X 0.250 L	1	253845
31	SCREW, HEX, 1/4-20 X 3/4 GR5	4	28166
32	CAP, VINYL, RED W/ARROW 0.13 X 0.50 X 1.00	1	F8-0284
33	PLUG W/0.781 DIA HOLE, NYL, BLK.	4	28945
34	SCREW, HEX, 5/16-18 X 3/4 SST	4	282205
36	ROLLER, ALIGNMENT	4	F8-0120
37	BUSHING, ALIGNMENT	4	F8-0121
38	BUSHING, 08FDU06, 1/2" X 3/8"	4	25384
39	NUT, ESN, 5/16-18 SST	4	283145
40	SNAPRING, 1/4" KLIPRING	2	283273
41	SPRING-LATCH RETURN	1	F8-0367
42	WASHER, FLT, .281 X .625 X .065 SST	1	282735
43	PLATE-WASSY. DEPLOY LOCK, LEFT HAND	1	F8-0422
44	BLOCK, DEPLOY LOCK	1	F8-0411
45	SCREW, HSS, 1/4-20 X 1/4 CUP POINT	2	28200
46	SNAPRING 3/4"	1	14-31-025
47	WASHER, FLT, .375 X .63 X .032 NYL	3	28562
48	SHAFT, DEPLOY LOCK	1	F8-0420
49	PLATE, DEPLOY LOCK, RIGHT HAND	1	F8-0313
50	NUT, ESN, 5/16-18 SST	1	283146

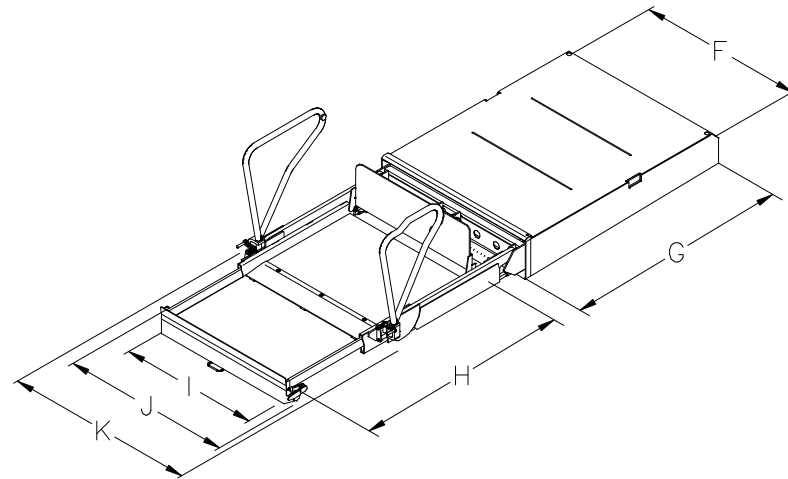
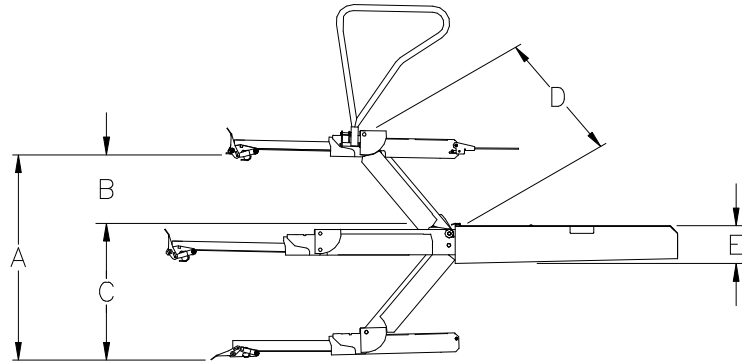
REF.	DESCRIPTION	QTY.	PART NO.
51	NUT, ESN, 1/4-20 THIN	1	14-08-304
52	SCREW, SSS, 5/16 X 5/8 X 1/4	1	14-50-001
53	BAR LATCH, DEPLOY LOCK	1	F8-0409
54	GROMET, .38 X .56 X .19 (X.81 X .38)	1	26664
55	SCREW, SSS, 3/8 X 5/8 SST	1	283765
56	WASHER, FLT, 0.387 X 0.654 X 0.015 NYL	1	282831
57	LINK-DEPLOY LOCK	1	F8-0408
58	DEPLOY LOCK MECHANICAL ASSY.	1	F8-0423
59	SPRING, COMP .468OD X 1 1/4 X .045	1	UV-SP-009
60	SCREW, PHP, 4-40 X 3/4	2	28034
61	SWITCH, ROLLER	1	264103
62	ROLLER, PLUNGER, SWITCH	1	F8-0385
63	ROLLPIN, 5/32 X 1/2 SST	1	283575
64	PLUNGER, ROLLER SWITCH	1	F8-0384
65	BRACKET-WASSY, ROLLER SWITCH	1	F8-0390
66	BAR, ROLLER SWITCH MOUNTING	1	F8-0382
67	ROLLPIN, 5/32 X 1 1/4 SST	1	28359
68		2	
69	NUT, ESN, 1/4-20 THIN, SST	1	283096
70	ROLLER SWITCH-ASSY.	1	F8-0386
71	CLAMP, NYL, 1/4 BLK	1	28-02-350
72	WASHER, SPL, 1/4	2	28274
73	WASHER, FLT 0.128 X 0.313 X 0.032	2	28265
74	WASHER, SPL, #4	2	28266

APPENDIX 1 LIFT SPECIFICATIONS

F8000 (A) SERIES EXPORT USE WHEELCHAIR AND STANDEE LIFT

Power electro-hydraulic motor
 Pump rating - 12 volts DC 1800 psi, 1250 watt
 Pump rating - 24 volts DC 1800 psi, 1250 watt
 Hydraulic cylinders 3.0", power - up/gravity - down

Rated load capacity 660 lbs.
 Manual backup (up) manual hand pump
 Manual backup (down) .. manual pressure release valve
 Weight approx. 406 lbs.



DIMENSIONS (inches)

	A	B	C	D	E	F	G	H	I	J	K
MODEL	Floor-to-ground travel	Travel Above	Travel Below	Arm Length	Stowed Height	Stowed Width	Stowed Length	Usable Platform Length	Usable Platform Width	Clear Entry Width	Width Traveling Frame
F8000	43.8	15.6	28.2	27.3	8.6	36.2	48.0	48.0	28.5	33.5	35.0

32SL228

F8000

NOTES

