



INNOVATION IN MOBILITY™

***RDO2700 Series
Power Swing Door Operator***

PRINT

Service Manual

This Ricon service manual is for use by qualified service technicians, and is not intended for use by non-professionals (do-it-yourselfers). The manual provides essential instructions and reference information, which supports qualified technicians in the correct installation and maintenance of Ricon products.

Qualified service technicians have the training and knowledge to perform maintenance work properly and safely. For the location of a Ricon authorized service technician in your area, call Ricon Product Support at 1-800-322-2884.

Customer Name: _____
Installing Dealer: _____
Date Installed: _____
Serial Number: _____

REVISION RECORD

REV	PAGES	DESCRIPTION OF CHANGE	ECR/ECO
32DDO04. A	All	New release, in two-book format.	3882/4864
END OF LIST			

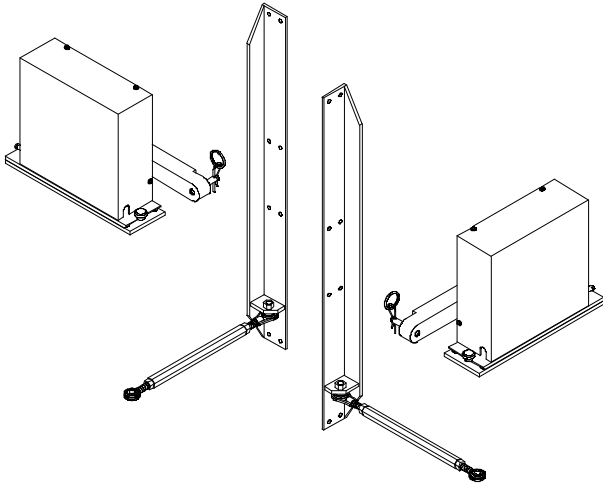
TABLE OF CONTENTS

<i>Chapter:</i>	<i>Page</i>
I. INTRODUCTION	1-1
A. RICON ONE-YEAR LIMITED WARRANTY	1-1
B. SHIPMENT INFORMATION	1-3
C. GENERAL SAFETY PRECAUTIONS	1-3
D. COMPONENT TERMINOLOGY	1-4
II. INSTALLATION	2-1
A. REQUIRED TOOLS	2-1
B. MECHANICAL INSTALLATION	2-1
C. ELECTRICAL INSTALLATION	2-1
D. FINAL ADJUSTMENTS	2-2
E. INSTALLATION COMPLET	2-3
F. CUSTOMER ORIENTATION	2-3
III. MAINTENANCE	3-1
A. MAINTENANCE SCHEDULE	3-1
B. TROUBLESHOOTING GUIDE	3-2
C. ELECTRICAL WIRING DIAGRAMS	3-3
1. DIAGRAM LEGEND	3-3
2. DOOR OPERATOR LIMIT SWITCH STATE DESCRIPTION	3-4
3. WIRING DIAGRAM	3-4
IV. SPARE PARTS	4-1

This page intentionally left blank.

I. INTRODUCTION

The RICON RDO2700 Series Power Swing Door Operators open and close swing-type van doors. They are designed to operate in most full size vans, and can provide up to 90° of motion for each door. The operators have adjustable linkage that provides exact positioning of each open door. Further adjustment is available at the heavy, splined connection between the operator and its linkage arm. The door operators are installed on the vehicle floor, adjacent to the door hinges.



The power door operators work with Ricon wheelchair lifts and ramps. As the lift or ramp is activated to DEPLOY, or extend from the vehicle, the power door operators automatically open the vehicle doors. After the lift or ramp has been used and is activated to STOW and retract into the vehicle, the door operators automatically close the vehicle doors. The power door operators are installed onto two doors but for safety reasons only one door is allowed to operate at a time.

This manual contains installation, maintenance instructions, and parts diagrams and lists for the Power Door Operator. The installation instructions must be followed exactly, no steps should be eliminated nor should the product be modified. It is important to user safety that the installation is thorough and correct. It is equally important that the Ricon sales/service staff be completely familiar with the Operating Instructions chapter of the Operator manual to demonstrate and explain the proper use of the product to the user. Once the operators are installed, it is very important that it be properly maintained by following the Ricon recommended cleaning, lubrication, and inspection instructions.

If there are questions, comments, or suggestions about this manual and it's information, please contact Ricon Product Support at one of the following locations:

Ricon Corporation
7900 Nelson Road
Panorama City, CA 91402(818) 267-3000
Outside (818) Area Code.....(800) 322-2884
World Wide Website..... www.riconcorp.com

Ricon U.K. Ltd.
Littlemoss Business Park, Littlemoss Road
Droylsden, Manchester
United Kingdom, M43 7EF(+44) 161 301 6000

Ricon Scandinavia A/S
Stanseveien 27
N-0976 Oslo
Norway.....(+47) 22 16 70 90

A. RICON ONE-YEAR LIMITED WARRANTY (refer to following page)

RICON CORPORATION ONE-YEAR LIMITED WARRANTY

Ricon Corporation (Ricon) warrants to original purchaser of this product that Ricon will repair or replace, at its option, any part that fails due to defective material or workmanship as follows:

- Repair or replace parts for a period of one year from date of purchase.

If You Need to Return a Product: Return this Ricon product to your installing dealer. Please give as much advance notice as possible and allow a reasonable amount of time for repairs.

If You are Traveling: All authorized Ricon dealers honor this warranty. Consult telephone directory or call our Product Support department for name of nearest authorized Ricon service technician.

This Warranty does not Cover:

- Labor or service charges (these may be covered separately by the installing service technicians).
- Malfunction or damage to product parts caused by accident, misuse, lack of proper maintenance, neglect, improper adjustment, modification, alteration, the mechanical condition of vehicle, road hazards, overloading, failure to follow operating instructions, or acts of Nature (i.e., weather, lightning, flood).

Note: Ricon recommends that this product be inspected by an authorized Ricon service technician at least once every six months, or sooner if necessary. Any required maintenance or repair should be performed at that time.



WARNING!

THIS PRODUCT HAS BEEN DESIGNED AND MANUFACTURED TO EXACT SPECIFICATIONS. MODIFICATION OF THIS PRODUCT IN ANY RESPECT CAN BE DANGEROUS.

This Warranty is Void if:

- The product has been installed or maintained by someone other than an authorized Ricon service technician.
- The product has been modified or altered in any respect from its original design without written authorization by Ricon.

Ricon disclaims liability for any personal injury or property damage that results from operation of a Ricon product that has been modified from the original Ricon design. No person or company is authorized to change the design of this Ricon product without written authorization by Ricon.

Ricon's obligation under this warranty is exclusively limited to the repair or exchange of parts that fail within the applicable warranty period.

Ricon assumes no responsibility for expenses or damages, including incidental or consequential damages. Some states do not allow the exclusion or limitation of incidental or consequential damages, so the above limitation or exclusion may not apply.

Important: The warranty registration card must be completed and returned to Ricon within 20 days after installation of this Ricon product for the warranty to be valid. The warranty is not transferable.

The warranty gives specific legal rights, and there may be other rights that vary from state to state.

B. SHIPMENT INFORMATION

Ricon does not sell directly to the user because of the specialized nature of this product. The product is distributed through a worldwide network of authorized Ricon service technicians who perform actual installation.

- When the product is received, unpack it and check for freight damage. Claims for any damage should be made to freight carrier immediately.
- Be sure installation kit contains all items listed on kit packing list. Please report any missing items immediately to the Ricon Service Department. The warranty and owner's registration cards must be completed and returned to Ricon within 20 days for the warranty to be valid.

NOTE: The Sales/Service Personnel must review Warranty and this Owner Manual with user to be certain that they understand safe operation of product. Instruct the user to follow operating instructions without exception.

C. GENERAL SAFETY PRECAUTIONS

- The following general safety precautions must be followed during installation, operation, service and maintenance:
- Under no circumstances should installation, maintenance, repair, and adjustments be attempted without the immediate presence of a person capable of rendering aid.
- An injury, no matter how slight, should always be attended. Always administer first aid or seek medical attention immediately.
- Protective eyeshields and appropriate clothing should be worn at all times.
- To avoid injury, always exercise caution when operating and be certain that hands, feet, legs, and clothing are not in the path of product movement.
- Batteries contain acid that can burn. If acid comes in contact with skin, flush affected area with water and wash with soap immediately.
- Always work in a properly ventilated area. Do not smoke or use an open flame near a battery.
- Do not lay anything on top of a battery.
- Check under vehicle before drilling so as not to drill into frame, subframe members, wiring, hydraulic lines, fuel lines, fuel tank, etc.
- Read and thoroughly understand the operating instructions before attempting to operate.
- Inspect the product before each use. If an unsafe condition, unusual noises or movements exists, do not use it until the problem is corrected.
- Keep others clear during operation.
- The product requires regular periodic maintenance. A thorough inspection is recommended at least once every six months. The product must always be maintained at the highest level of performance.

● **COMPONENT TERMINOLOGY**

The references used throughout this manual are illustrated in **Figure 1-1** and defined in **Table 1-1**. Refer to **Chapter IV, "Spare Parts"** for more details.

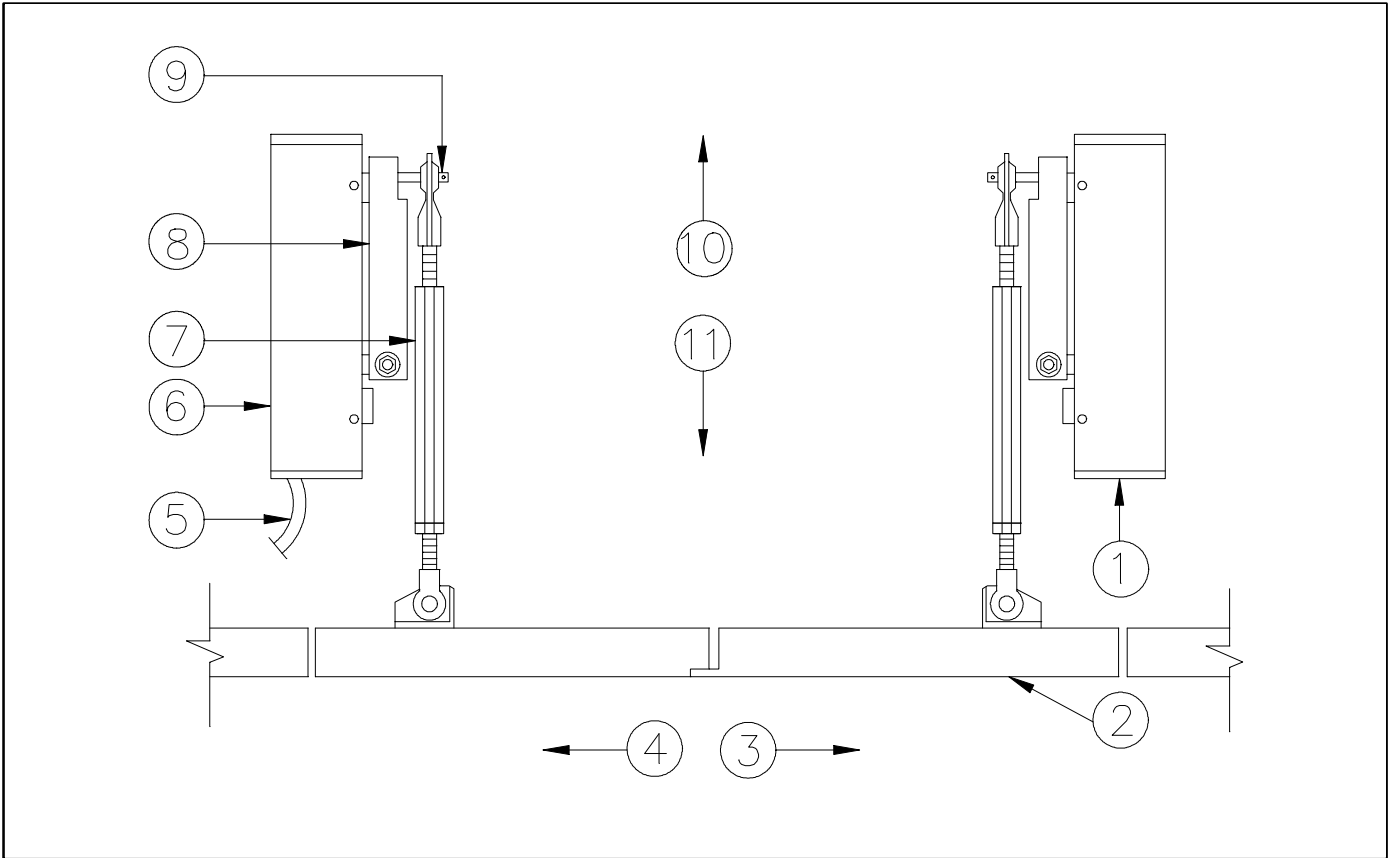


FIGURE 1-1: RDO2700 SERIES POWER SWING DOOR OPERATOR

TABLE 1-1: RDO2700 SERIES SWING POWER DOOR OPERATOR TERMINOLOGY		
REF.	NAME	DESCRIPTION
1	Right Motor	Opens and closes the right van door.
2	Van Doors	Doors that are controlled by the Swing Power Door Operators.
3	Right	Reference points from outside the vehicle looking at the lift inside the vehicle
4	Left	
5	Swinger Harness	Connects the Swing Power Door Operators to the lift.
6	Left Motor	Opens and closes the left van door.
7	Rod (Left and Right)	Connects van door to Actuator Arm.
8	Actuator Arm (Left and Right)	Connects Rod to Motor.
9	Emergency Release Pin	Disconnects Swing Power Door Operators in the event of power failure.
10	Inboard	Reference points from outside the vehicle looking at the lift inside the vehicle
11	Outboard	
END OF TABLE		

II. INSTALLATION

The chapter provides instructions for installing the RICON RDO2700 Series Power Swing Door Operators into most vans. Custom installations are also possible in other types of vehicles. Please contact Ricon Product Support for assistance if a question arises that is not covered here; it is impractical to provide specific information in this manual for every possible application.

WARNING!

THIS RICON PRODUCT REQUIRES A COMPLEX AND DELICATE INSTALLATION. THIS PRODUCT MUST BE INSTALLED ONLY BY A TRAINED, AUTHORIZED RICON SERVICE TECHNICIAN.

A. REQUIRED TOOLS

- Allen Wrenches
- C-Clamp or Lock Pliers
- Electric Drill with Drill Bits (1/8" and 1/4")
- File, Round
- Hammer (Plastic Tip)
- Screwdrivers
- Socket Set
- Open-end Wrenches

B. MECHANICAL INSTALLATION

1. Safely park vehicle on a flat, level surface and turn engine off.
2. The power door operators must be mounted directly to the metal doors of the vehicle. Remove door trim, carpet, plywood, molding, wall paneling or any other material that may interfere with the installation.
3. It may be necessary to secure the motor mounting plates with flathead bolts, nuts, and lock washers in situations where furnished screws will not go through several layers of metal or reinforced vehicle floors.
4. Different layers of paneling, upholstery, etc. may require additional bolts, layers and nuts at the lower part of the door Brackets.
5. Refer to **Figure 2-1**. For side door installations, it may be necessary to locate the door operators partially over the step to obtain the correct opening action. This can be simplified by supporting the end of each mounting plate on a metal angle that bolts to the step riser. In order to leave as much usable floor space as possible, the floor is extended across the step and the lift is positioned farther outboard. When this is done, the door operators should rest on the floor extension.
6. For side door installations in Ford Vans, 10-1/2" Rods are used.

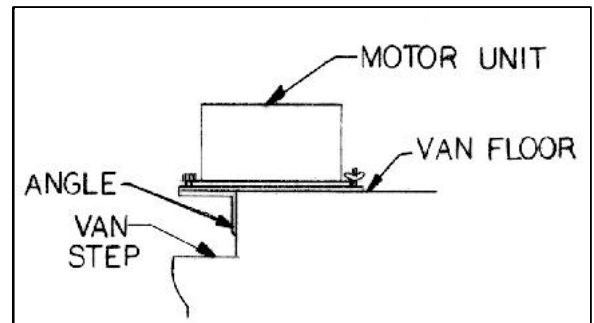


FIGURE 2-1: SIDE DOOR INSTALLATION

C. ELECTRICAL INSTALLATION

1. Remove the 9-pin plug with the yellow jumper wire from the door connector receptacle at the lower left portion of the lift.
2. Insert the 9-pin plug (found at the end of the short leg) of the Swinger Harness into the door connector receptacle at the bottom of the lift.
3. Insert the 9-pin receptacle (found at the end of both the short and long legs) into the Left Door Operator.
4. Insert the 9-pin receptacle (found at the end of the long leg) into the Right Door Operator.

NOTE: Harness protective covers are supplied to protect the swinger harness from becoming pinched and/or damaged whenever a wheelchair passenger enters or exits the lift platform. The swinger harness is positioned under these covers which are screwed to the lift's mounting base plate on the outboard side using 10-24 x 1/4" screws and washers.

D. FINAL ADJUSTMENTS

1. Refer to **Figure 2-2**. As packaged, the power door operators are in the "door closed" position. The rod ends should be adjusted as shown:

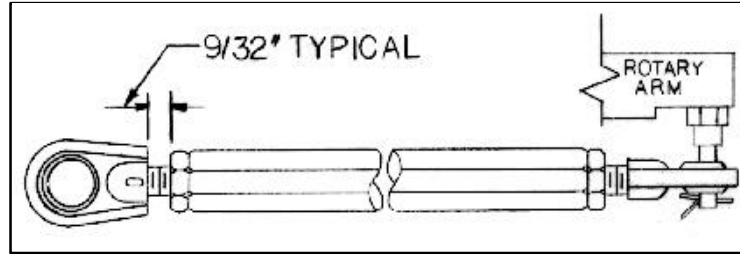


FIGURE 2-2: ROD ADJUSTMENT

1. Refer to **Figure 2-3**. Fasten the rods to the door brackets. With the Swing Power Door Operator units in the closed position, place the door brackets against doors. Close the doors and use tape to mark the ends of the motors' mounting plates.

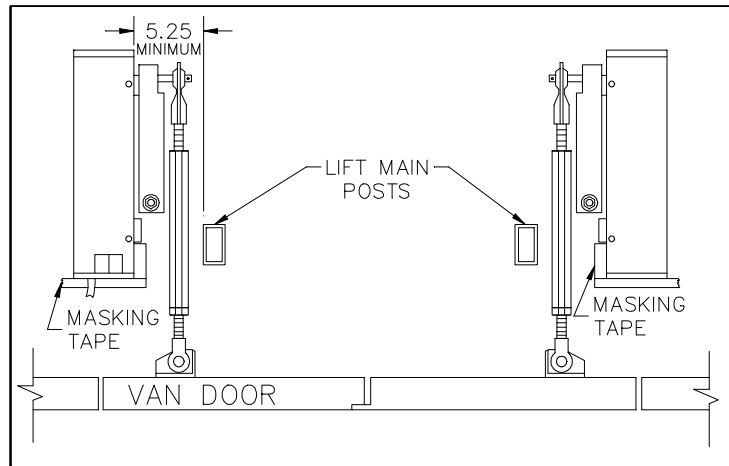


FIGURE 2-3: MOTOR LOCATION

2. Refer to **Figure 2-4**. With power, move actuator arms to their extended positions and open doors 90° or greater.
3. With the motor mounting plates masked, place the door brackets against the doors' inner surfaces and mark bracket locations.
4. The ball centerline on the door brackets should be at the same height (or not more than 1/4" higher) as the pin centerline on the actuator arms. (The bottom of the door brackets should be just above floor level.)
5. With power, return the power door unit to the closed position and verify that the motors and door brackets do not hit the parallel door arm of the lift, spare tire, seat, etc. Be sure the rod does not interfere with the actuator arm in the closed position.
6. Attach the door brackets to the doors using hex-head screws. Attach the motor mounting plates to the van floor with flat-head slotted screws.

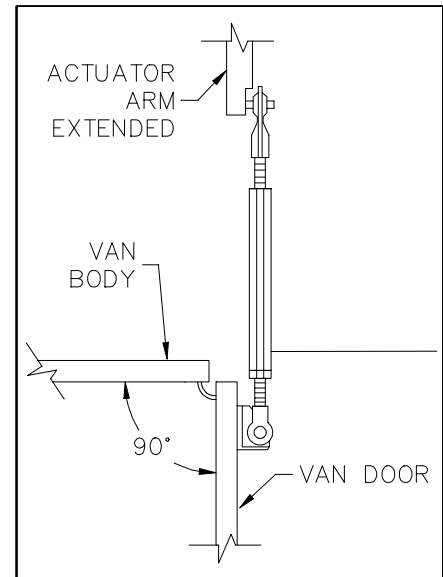


FIGURE 2-4: BRACKET LOCATION

WARNING!

BEFORE DRILLING, CHECK UNDERNEATH VAN. DO NOT DRILL INTO FUEL TANK, WIRING, FUEL LINES, HYDRAULIC LINES, ETC.

7. Adjust the door seal "tightness" by adjusting the connector rod.

E. INSTALLATION COMPLETION

1. If power door operators are installed in side door, reinstall stepwell cover.
2. Reinstall all doorstops and latches, where applicable, to the vehicle.
3. Reinstall door plastic moisture barriers.
4. Use door flange washer to cover the interior panel exit holes for the actuator arms. Reinstall interior panels and reinstall actuator arms to the door operators.
5. Reinstall door trim, carpet, plywood, molding, wall paneling or any other material that has been removed.
6. Refer to the Operating Instructions chapter of this manual and perform several cycles of operation.

F. CUSTOMER ORIENTATION

IMPORTANT

- Customer Orientation -

Ricon Sales/Service Personnel must review the Warranty and Service/Owner Manual with the customer to be certain he/she understands the safe operation of the equipment. Instruct the customer to always follow the operating instructions without exception.

Refer to **Figure 2-5** and ensure that all decals are properly located and affixed as shown on the following page.

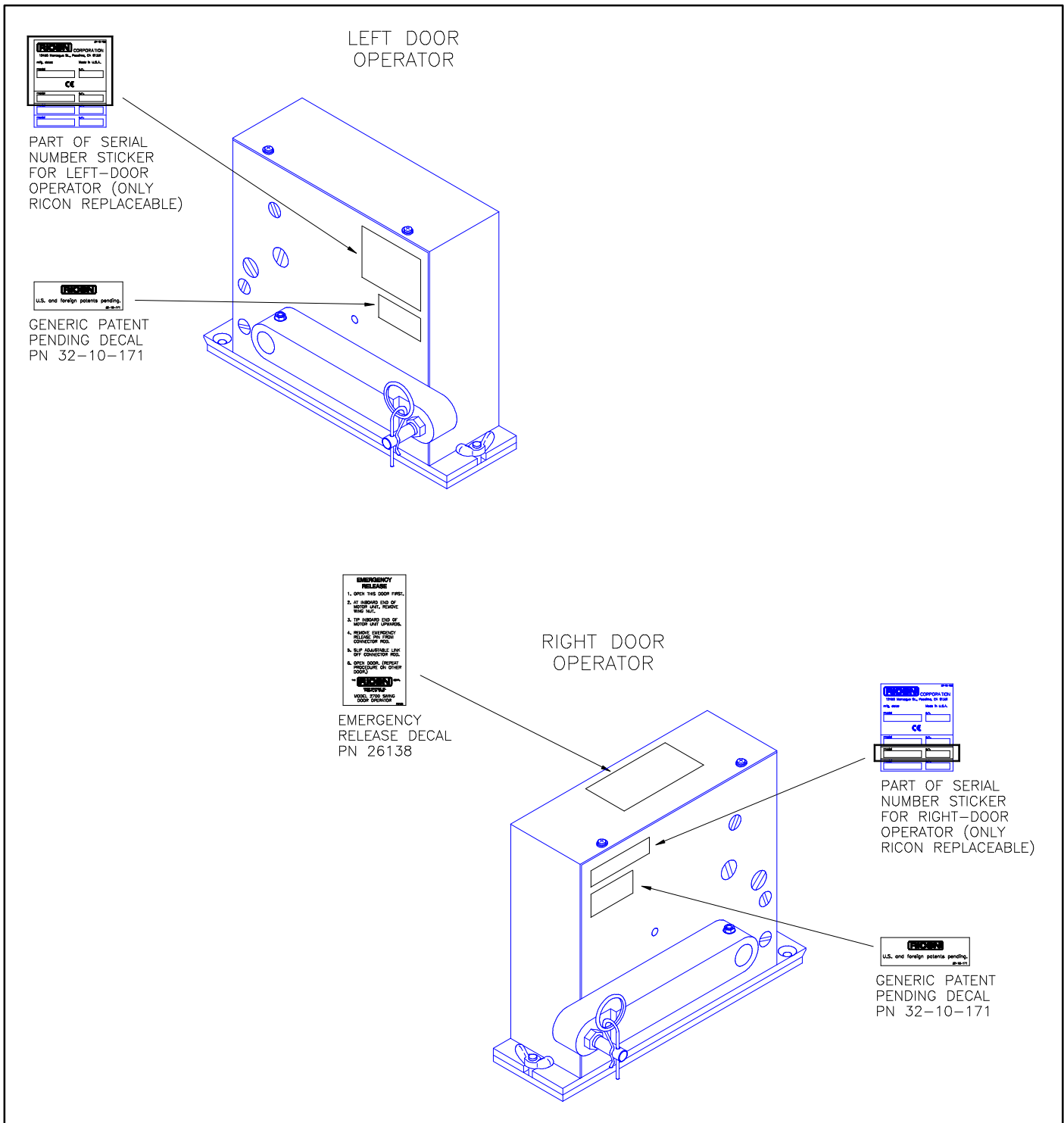


FIGURE 2-5: DECAL LOCATIONS AND PART NUMBERS

III. MAINTENANCE

Regular routine maintenance of the RICON RDO2700 Series Power Swing Door Operators is required to provide optimum performance. During the Ricon warranty period, maintenance inspections must be performed by an authorized Ricon service technician at least once every six months, or sooner depending on usage. After the warranty period, maintenance inspections are recommended for the same time intervals.

 **WARNING!**

THIS RICON PRODUCT IS HIGHLY SPECIALIZED. MAINTENANCE AND REPAIRS MUST BE PERFORMED BY AN AUTHORIZED RICON SERVICE TECHNICIAN USING RICON REPLACEMENT PARTS. MODIFYING OR FAILING TO PROPERLY MAINTAIN THIS PRODUCT WILL VOID THE WARRANTY, AND MAY RESULT IN UNSAFE OPERATING CONDITIONS. TO MAINTAIN THE WARRANTY, THIS PRODUCT MUST BE INSPECTED AT LEAST EVERY SIX MONTHS, OR SOONER DEPENDING ON USAGE.

A. MAINTENANCE SCHEDULE

TABLE 3-1: SIX-MONTH MAINTENANCE CHECK	
INSPECTION AREA	ACTION
Rod ends and hex rod.	Clean, tighten, and lubricate with light oil as needed.
Check door motion for complete travel.	Adjust as needed.
Check all fasteners for tightness.	Tighten as needed.
Check electrical crossover cable for interference with moving members.	Adjust and secure as needed.
Check manual operation of power door operators.	Verify proper operation.
NOTE: The following steps require removal of the door panels.	
Check spur gear and bushings for signs of wear.	Replace if needed.
Check wiring and limit switches for proper connection and/or interface points.	Adjust as required.
END OF TABLE	

B. TROUBLESHOOTING GUIDE

The troubleshooting guide is designed to provide a logical starting point to locate general problems that could occur with the power door operators. However, not all possible problems or combinations of problems are listed. For troubleshooting the door operators, refer to **Table 3-2**. The guide does not incorporate routine safety precautions or preliminary procedures and assumes that the vehicle battery is fully charged and the battery terminals/connectors are clean and tight.



WARNING!

THE TROUBLESHOOTING GUIDE DOES NOT INCORPORATE ROUTINE SAFETY PRECAUTIONS OR PRELIMINARY PROCEDURES. ONLY A TRAINED, AUTHORIZED RICON SERVICE TECHNICIAN MUST PERFORM TROUBLESHOOTING. AFTER THE WARRANTY PERIOD, IT IS RECOMMENDED THAT TROUBLESHOOTING BE PERFORMED BY AN AUTHORIZED RICON SERVICE TECHNICIAN.

TABLE 3-2: TROUBLESHOOTING GUIDE

TABLE 3-2: TROUBLESHOOTING GUIDE			
SYMPTOM	POSSIBLE CAUSE	REMEDY	
NO OPERATION	No power to door operators	Battery terminals dirty.	Clean/tighten.
		Ground connection.	Clean/Repair.
		Power door operator circuit breaker "tripped".	Reset circuit breaker.
		Lift main circuit breaker "tripped".	
		Wiring short circuit.	Repair.
		Circuit breaker defective.	Replace.
		Loose connection.	Repair.
OPEN MOTION	No motion	Toggle switch defective.	Replace.
		Wiring connection.	Clean/repair.
		Limit switch at right door defective.	Replace.
		Right motor defective.	Replace.
		Ground connection.	Repair.
	Only right door opens	Limit switch at right door defective.	Adjust/replace.
		Loose connection.	Repair.
CLOSE MOTION	No motion	Toggle switch defective.	Replace.
		Wiring connection.	Repair.
		Limit switch at left door defective.	Replace.
		Left motor defective.	Replace.
		Ground connection.	Clean/repair.
	Only left door closes	Limit switch at left door defective.	Adjust/replace.
		Wiring connection.	Repair.
CLOSE MOTION	Only left door closes	Right motor defective.	Replace.
		Ground connection.	Clean/repair.
DOOR OPERATOR SEQUENCE	Sequence is correct, but open is closed	Actuator arm is installed upside-down.	Reverse actuator arm.
		Motor wires reversed.	Motors are shipped with brown wire toward inside of vehicle.
END OF TABLE			

C. ELECTRICAL WIRING DIAGRAM

1. DIAGRAM LEGEND

a. Color Codes

TABLE 3-3: COLOR CODE DEFINITIONS			
CODE	COLOR	CODE	COLOR
BK	Black	R	Red
BL	Blue	VI	Violet
BR	Brown	VI/BK	Violet w/black
GN	Green	W	White
GN/BK	Green w/black	W/O	White w/orange
O	Orange	Y	Yellow
O/BK	Orange w/black	Y/BK	Yellow w/black
END OF TABLE			

b. Connectors

Refer to **Figure 3-1**. The standard electrical connectors used by Ricon are Molex .062" Series. These connectors have terminal numbers stamped onto the rear; use these numbers and colors to identify all wires.

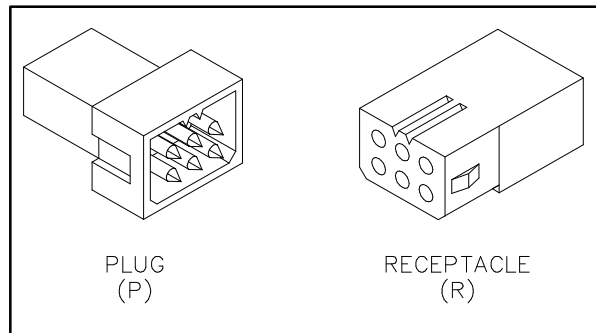


FIGURE 3-1: MOLEX CONNECTORS

c. Labels

12V	12 Volts – Circuit current rating is also given
DC	Door Close
DCL	Door Close, Left
DCR	Door Close, Right
DO	Door Open
DOE	Door Open Enable – Used in sequenced systems only
DOL	Door Open, Left
DOR	Door Open, Right
GND	GROUND
OUT	Out signal to lift
OUTA	Out Attempt (checks door first) – Non sequenced
SDA	System Deploy Attempt – DO followed by OUT

d. Symbols

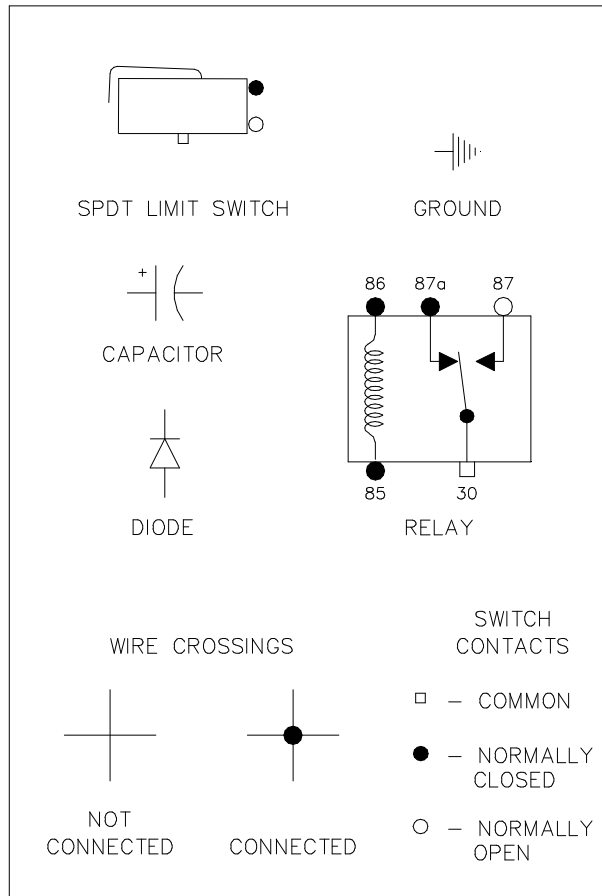


FIGURE 3-2: DIAGRAM SYMBOLS

2. DOOR OPERATOR LIMIT SWITCH STATE DESCRIPTION

Refer to **Figure 3-3**. The limit switch actuation diagram shows the state of all limit switches as the doors go from fully closed to fully open. The solid (?) line indicates the normally closed circuit is active, while the two thin lines (=) indicate the normally open circuit is active. The dotted lines (??? or ??) are used to show the switch states beyond the normal travel boundaries of the door. This is useful in showing the operation of switches, which change state at the boundary point.

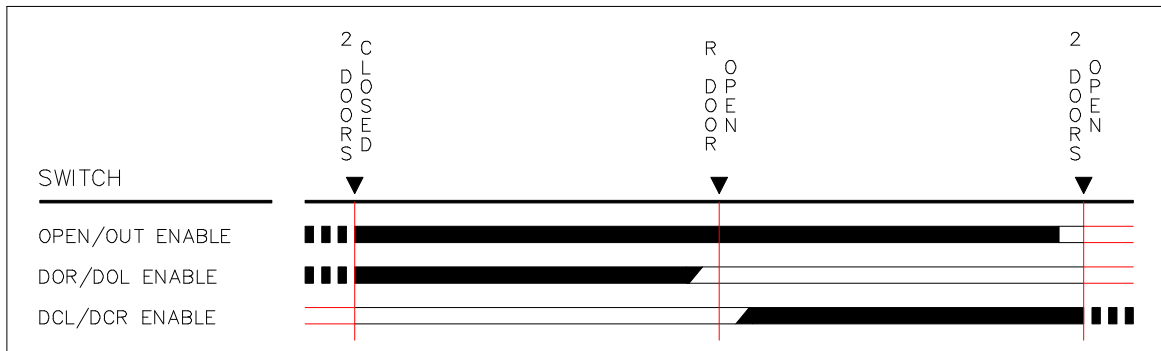


FIGURE 3-3: LIMIT SWITCH STATE CHART

3. WIRING DIAGRAM

Refer to **Figure 3-4** on the following page for the door operator electrical wiring diagram.

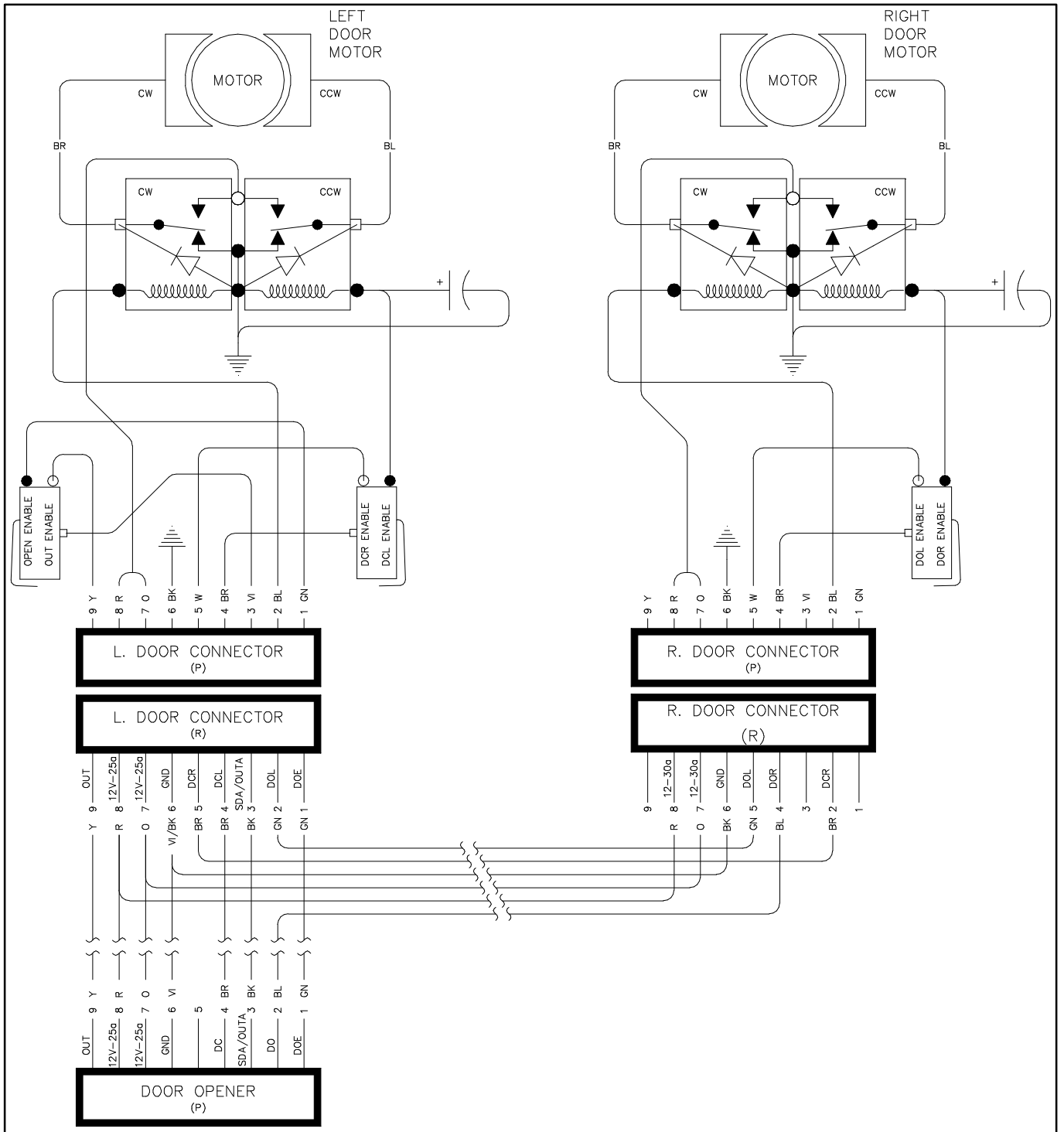
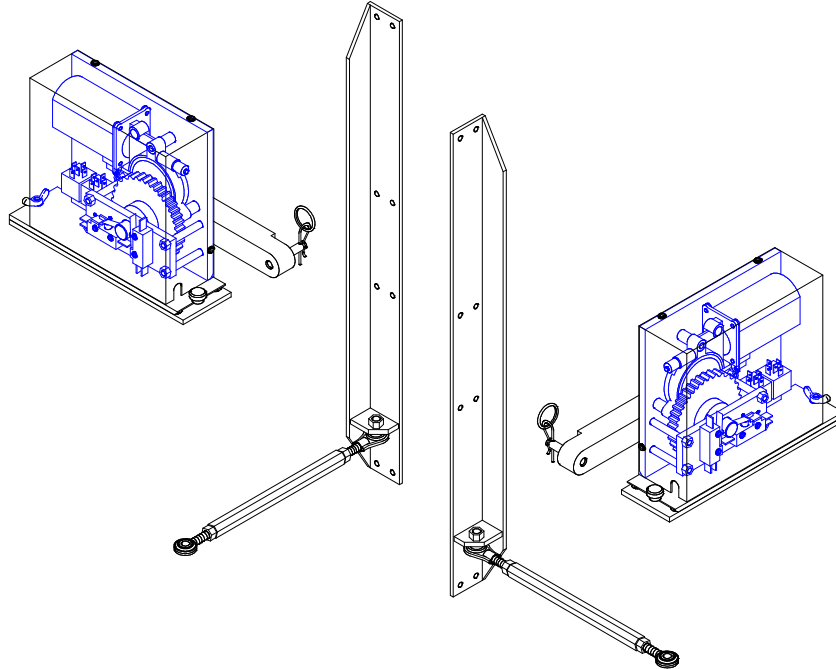


FIGURE 3-4: RDO2700 ELECTRICAL WIRING DIAGRAM

This page intentionally left blank.

IV. SPARE PARTS

This chapter contains parts diagrams and lists for the RICON RDO2700 Series Power Swing Door Operator. The parts diagrams are the 3D exploded view of the components referenced by numbers. The accompanying parts list contains the part reference number, description, quantity used, and the Ricon stock number. For parts identification, locate the part on the appropriate drawing and note the reference number. The parts list that accompanies each drawing will list the stock number of the desired part. For the part numbers of the door operator decals, refer to Decal Locations and Part Numbers figure in **Chapter II** of this manual.



PRODUCT MODEL AND KIT NUMBERS	
PRODUCT NUMBER	RDO2700, RDO2706, RDO2710, and RDO2720
DOCUMENTATION KIT NUMBER	01059
SPARE DECAL KIT NUMBER	26001

DATE: 10/20/94
DWG: D0270001
REV. 002

POWER DOOR OPERATOR
RD02700 SERIES
SERIAL NO's 200000-PRESENT
 (RIGHT HAND DOOR OPENER ASSEMBLY SHOWN)

LEFT AND RIGHT HAND ASSEMBLIES
 USE SAME PARTS, UNLESS OTHERWISE
 SPECIFIED.

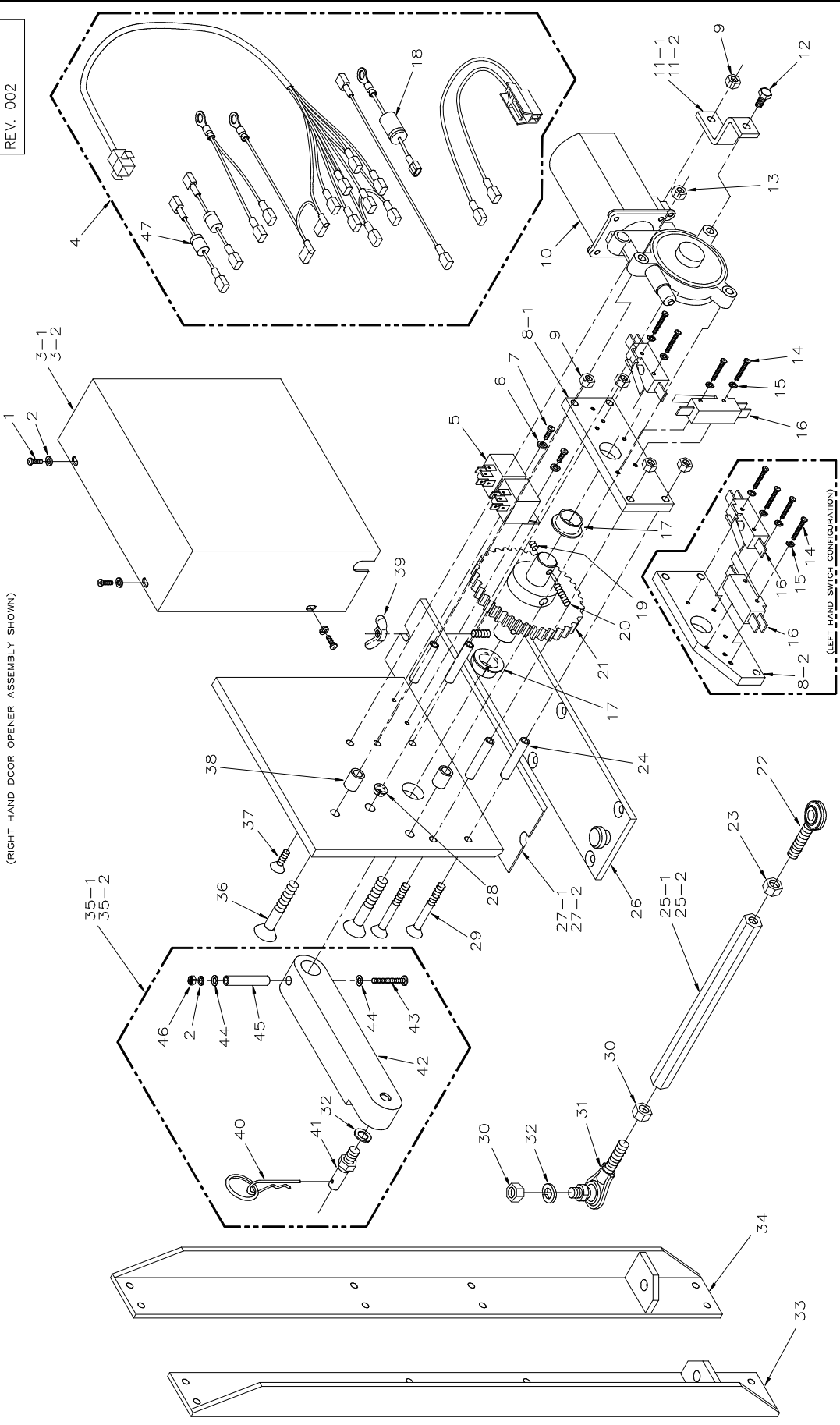


FIGURE 4-1: POWER DOOR OPERATOR RDO2700 SERIES

**POWER DOOR OPERATOR
RDO2700 SERIES
SERIAL No's. 200000 - PRESENT**

REF.	DESCRIPTION	QTY.	PART NO.
1	CS-10-32 X 0.375 PAN PHIL (BAG OF TEN)	4	19718
2	WASHER #10 SPLIT LOCK	4	28272
3-1	COVER SWINGER-RH.	1	01707R
3-2	COVER SWINGER-LH.	1	01707L
4	HARNESS-SWINGER, UNIVERSAL	1	R27-1000
5	RELAY, SPDT, 12VDC BOSCH	2	26460
6	WASHER #8 SPLIT LOCK	2	28253
7	MS 8-32 X 3/8 PHIL PAN	2	28069
8-1	BRIDGE-BEARING	1	01777
8-2	BRIDGE-BEARING LH.	1	017771
9	NUT-HEX 1/4-20 NYLON INSERT	5	28309
10	MOTOR-DELCO PH3 MODIFIED	1	V2-ES-040
11-1	BRACKET, MOTOR MOUNTING	1	01741
11-2	BRACKET, MOTOR MOUNTING LH.	1	01767
12	BOLT-HEX 5/16-18 X 3/4	1	28224
13	NUT-HEX 5/16-18 NYLON INSERT (LH. ONLY)	1	28314
14	MS 6-32 X 1 PHIL PAN	2	28046
15	WASHER #6 SPLIT LOCK	2	28268
16	SWITCH-LIMIT SINGLE POLE	1	26407
17	BUSHING-NYLINER MODIFIED	2	01753
18	ASSEMBLY, CAPACITOR	1	28206
19	SOCKET SET 1/4-28 X 1/4 CUP POINT	1	28205
20	SOCKET SET 1/4-28 X 3/4 FLAT POINT	1	28206
21	GEAR ASSY-ROTARY SHAFT	1	01781
22	ROD END - EYELET LH THREAD	2	25501
23	NUT - HEX 3/8-24 LH THREAD	2	28320
24	SPACER - 1.125"	4	26801
25-1	ROD - HEX 7.5"	2	01704
25-2	ROD - HEX 10.5"	2	01706
26	BASE ASSY - VAN MOUNTING	1	01785
27-1	PLATE ASSY - MOUNTING, WELD RH	1	01754
27-2	PLATE ASSY - MOUNTING, WELD LH	1	01729
28	BUSHING - NYLINER SWINGER	1	25304
29	MS 1/4-20 X 2 1/4 SLOT FLAT	4	28191
30	NUT - HEX 3/8-24 RH THREAD (BAG OF 10)	2	19710
31	ROD - END BALL RH THREAD	2	25502
32	WASHER 3/8 SPLIT LOCK (BAG OF TEN)	3	19709
33	BRACKET ASSY - SWINGER LH	1	01715
34	BRACKET ASSY - SWINGER RH	1	01716
35-1	ACTUATOR ARM ASSY - RH	1	01749
35-2	ACTUATOR ARM ASSY - LH	1	01748
36	MS 5/16-18 X 1 1/2 PHIL FLAT	2	282292
37	MS 1/4-20 X 1 PHIL FLAT	1	28188
38	BUSHING, SPACER, 0.50 OD X 0.33 ID X 0.63 L	2	V2-BU-002
39	NUT - WING 5/16-18	1	28316
40	PIN ASSY	2	01742
41	STUD - SWINGER	2	01725
42	ARM - DOOR	2	01703
43	MS 8-32 X 1 3/4 PHIL PAN	2	28076
44	WASHER #10 FLAT	2	28271
45	ROLL PIN - 5/16 X 1 1/4	2	28364
46	HEX - NUT 8-32	2	28302
47	ASSEMBLY, DIODE	2	R27-1003

This page intentionally left blank.

