



INSTALLATION INSTRUCTIONS S-SERIES DOOR BUMPER KIT #1105

- Read and understand supplemental instructions completely before installation is attempted. Refer to the Service/Owner Manual for additional installation instructions and safety precautions.
- Check contents of kit. Immediately notify Ricon of any missing parts. Claims for damages that have occurred during shipment must be made to the shipper.

TABLE OF CONTENTS	PAGES
I. TOOLS REQUIRED	1
II. INSTALLATION	1

I. TOOLS REQUIRED

5/32" drill bit	large center punch	3/8" socket wrench w/ extension
ball peen hammer	1/2" or larger drill	

II. INSTALLATION

A. LOCATE AND MARK POSITION OF BUMPER BRACKET ON BUS DOOR:

Position bumper bracket on bus door such that when the lift is fully stored and the bus door is closed, the platform will be supported by the rubber bumper.

NOTE: Be careful not to install the bracket too low. This will result in a tighter fit and consequently make it difficult to close the door.

B. DRILL AND PREPARE FOUR MOUNTING HOLES IN BUS DOOR:

Mark the centers of each of the four holes and drill using a 5/32" drill bit. Once the holes are drilled, turn the edges of each hole over using the punch and hammer. Turning the edges of the holes over will result in more efficient thread engagement of the sheet metal bolts.

C. INSTALL SHEET METAL BOLTS:

Using a 3/8" socket, install the four #14 x 3/4" sheet metal bolts provided.

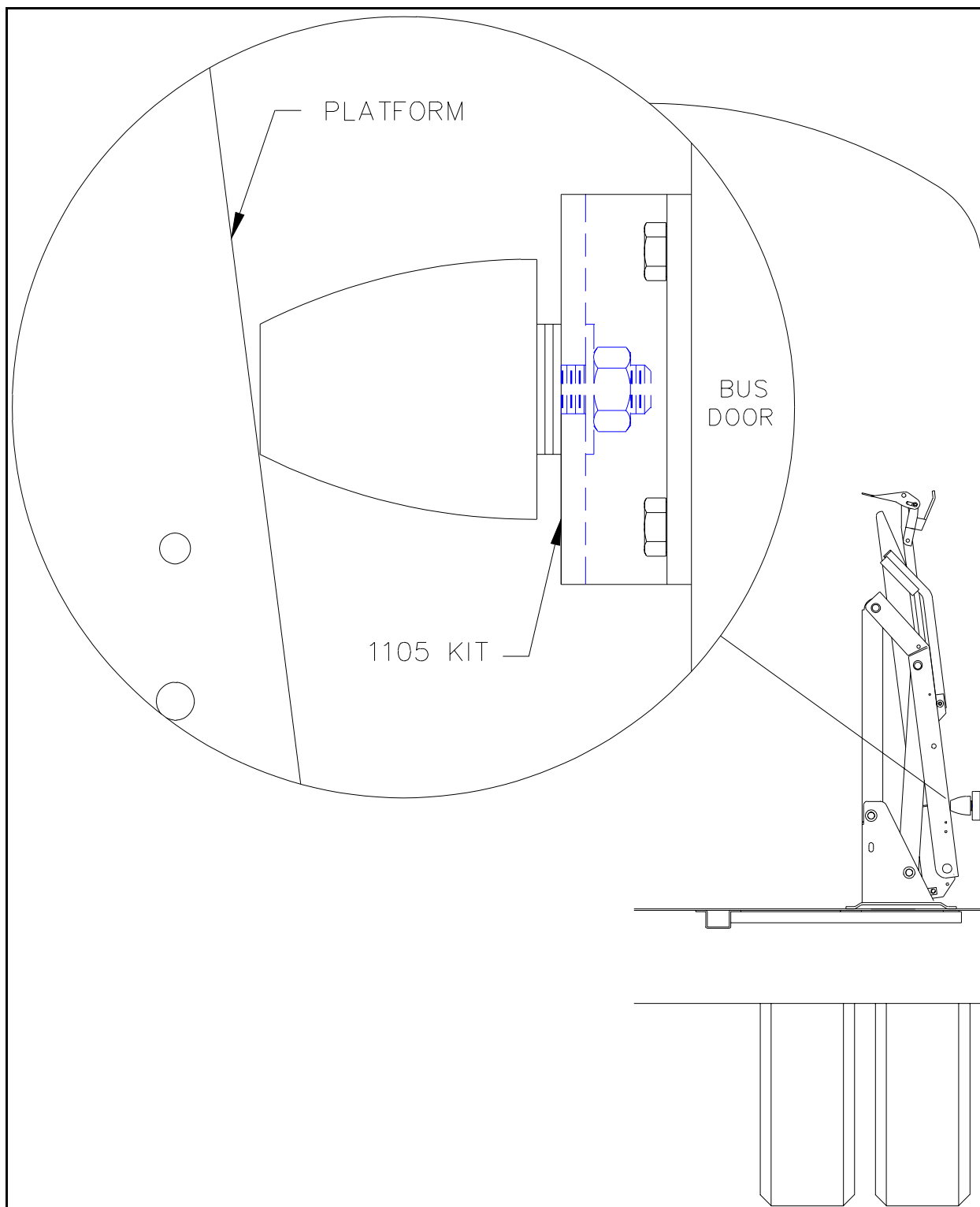


FIGURE [1]